

Branch - Hillsdale - St. Joseph
Community Health Agency



“Your Local Health Department”

Our Mission

To provide for the benefits of public health protection, prevention, and promotion.

www.bhsj.org

To plan for and deliver
a wide range of
services according to
community needs
and collaborate
with other community
agencies towards the
completion of our
mission.

Letter to the Community

As Public Health Officer for Branch, Hillsdale, and St. Joseph Counties, I am pleased and honored to present the Annual Report highlighting your local health department's accomplishments for the Fiscal Year 2002/2003.

The Community Health Agency's continued success in providing for the benefits of public health protection, prevention, and health promotion is a reflection of the dedicated work of the agency's well trained and experienced staff as well as the commitment and support from the County Boards of Commissioners of each County.

During Fiscal Year 2002/2003 the agency dedicated significant resources to upgrading the technology infrastructure of the agency so that we could better serve our community in terms of local disease surveillance and emergency preparedness. An electronic Health Alert Network now stretches from the Centers for Disease Control and Prevention in Atlanta to our community to give us early warning and vital information regarding national disease outbreaks and disasters. The Michigan Disease Surveillance System is now operational state-wide by collecting on-going statistics for communicable disease monitoring. Our existing website, www.bhsj.org received a significant overhaul and facelift. We consider our website to be an added and exciting informational resource for our community.

During Fiscal Year 2002/2003 our local community was hit, like other communities nationally, by the strongest strain of influenza in years. By working with our local hospitals and physicians we were able to stretch the available vaccine supplies to meet our community's most pressing needs. Late in the year we were pleased to move into our newly renovated office site on Hatch Street in Sturgis. By the end of the fiscal year, a new Branch-St. Joseph Area Agency on Aging Multi-year Plan was prepared and adopted for 2004 through 2006.

During Fiscal Year 2002/2003 we continued to enhance our environmental health protection role by implementing a beach water sampling and monitoring program under a contract with the State. We were also able to continue our popular food service manager and food handler education programs for local food establishments.

Despite continuing to operate in a very limited financial environment, we look forward to the many opportunities the future will present to us. Despite the occasional frustrations associated with any line of work, we never tire of fulfilling our agency's mission and responsibilities to you, our community.

Sincerely,



Duke Anderson, MPH, MBA
Health Officer/Administrator

Our Values

- ▶ Place the customers of our services at the center of our operations.
- ▶ Maintain and improve the quality of services for the benefit of our customers.
- ▶ Improve communication and coordination of services within the agency.
- ▶ Coordinate services with other locally based organizations to reduce duplication of effort and improve customer access to appropriate services.
- ▶ Provide our services in the most financially responsible manner.
- ▶ Provide a positive, rewarding, and challenging atmosphere for all employees.

Board of Health

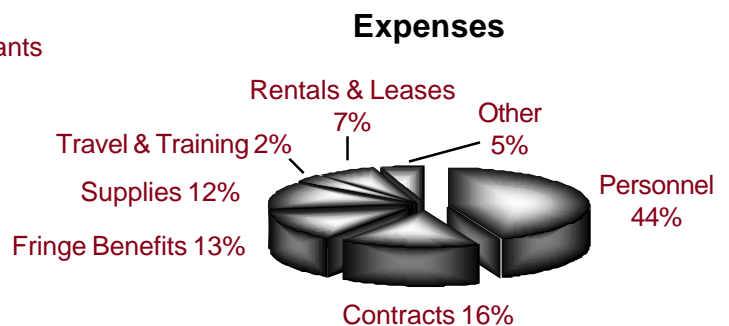
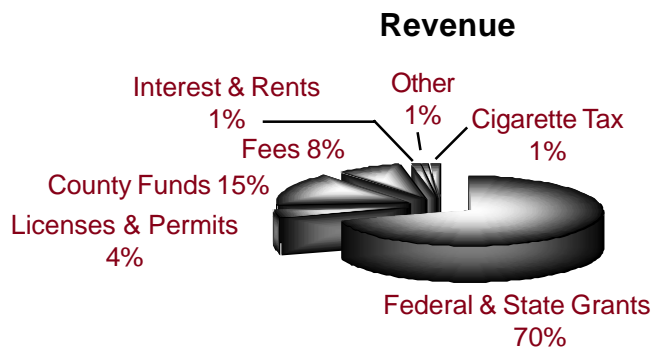
ALICE BRITTON, CHAIR Hillsdale County
MONTE BORDNER St. Joseph County
WILLIAM CHINERY Branch County
TERRY MACDONALD, VICE CHAIR Branch County
DAVID PUESHEL St. Joseph County
ERIC SHAFER St. Joseph County
MAXINE VANLERBERG Hillsdale County

Administrative Staff

Health Officer **DUKE E. ANDERSON, MPH, MBA**
Medical Director **JAMES E. PHILLIPS, MD**
Environmental Health Director **STEPHEN TODD, RS, MPA**
Prevention Services Director **JENNIE SHOLLY, RN, MA**
Finance & Information Director **DONNA COWDEN**
Director of Human Resources & Facilities **MAUREEN PETZKO, BA**

Agency Budget

Total Budget - \$5,869,966



Highlights

- ▶ All *Environmental Application Forms* are now available for download at www.bhsj.org.
- ▶ Offered 5 food safety/sanitation courses that provided training to over 100 people.
- ▶ Assisted the Michigan Department of Environmental Quality with the investigation of ground water contamination at 10 locations within our tri-county area.

On-Site Sewage

Reviews sites proposed for sewage disposal, issuance and/or denial of permits, sewage disposal evaluation, inspection, investigation and enforcement.

| | | | | | |
|-----------------------------|-----|-----|-----|-----|-------|
| Well/Septic Evaluations | 56 | 30 | 35 | 121 | 397 |
| Construction Permits Issued | 203 | 382 | 321 | 906 | 1,028 |
| Septic Systems Inspected | 203 | 247 | 157 | 607 | 1,038 |
| Vacant Land Evaluations | 33 | 93 | 74 | 200 | 112 |

Private and Public Water Supply

These programs are designed to assure both the proper installation of individual water wells and the monitoring and regulating of Type II water supplies to assure safe, usable groundwater.

| | | | | | |
|------------------------------------|-----|-----|-----|-------|-------|
| Well Construction Permits Issued | 284 | 399 | 421 | 1,104 | 1,064 |
| Well Permits Inspected | 270 | 282 | 341 | 893 | 1,101 |
| Non-community Water Supply Surveys | 8 | 12 | 9 | 29 | 57 |

Food Protection

This program is the systematic approach to minimize the risk of foodborne illness and to ensure that food meets consumer expectations through application of statewide standards for all establishments where food is prepared and/or served to the public.

| | | | | | |
|-------------------------------------|-----|-----|-----|-------|-------|
| Establishments Inspected | 327 | 327 | 463 | 1,117 | 1,103 |
| Plan Reviews | 8 | 2 | 5 | 15 | 22 |
| Vending Location Inspections | 61 | 12 | 63 | 136 | 88 |
| Temporary Establishment Inspections | 65 | 72 | 155 | 292 | 311 |

Highlights

- ▶ To locate information about various community presentations that are offered and many other Health Promotion services visit our website at www.bhsj.org.
- ▶ Performed 295 car seat installations and safety checks.
- ▶ Distributed over 550 carbon monoxide detectors, smoke alarms and other safety devices.
- ▶ Provided the Life Skills Program to 40 pregnant mothers in Hillsdale County.
- ▶ 8 Think First presentations were provided to 719 children in St. Joseph County. Included information on the prevention of brain and spinal cord injuries.
- ▶ The SAFE KIDS Chapter received \$10,293 in grant funding and \$9,661 from in-kind donations.
- ▶ The Tobacco Reduction Action Coalition (TRAC) received \$8,464 from local grantors in support of tobacco education and cessation activities.
- ▶ Distributed 650 Michigan Department of Community Health Tobacco Quit Kits in the tri-county area.
- ▶ Implemented CHA Newsletter publication to be distributed twice yearly to health care providers and community partners to share updates.

Health Promotion & Health Education

SAFE KIDS Chapter

| | |
|--------------------------|-------|
| SAFE KIDS Events | 14 |
| Bike Helmets Distributed | 1,219 |
| Total Volunteer Hours | 650 |

Tobacco Reduction Action Coalition

| | |
|---------------------------------|----|
| Branch County Smoke-free Events | 4 |
| Participants | 80 |

Outreach

| | |
|--|-----|
| Child Safety Seats Distributed | 256 |
| Baby Bags Distributed - Hillsdale County | 360 |

Healthy Beginnings Program - Hillsdale County

| | |
|------------------------------|-------|
| Families Screened | 116 |
| Home Based Services Provided | 1,046 |

Healthy Families Nurturing Communities

| | |
|------------------------------|-------|
| Families Served | 324 |
| Home Based Services Provided | 2,645 |

Children's Special Health Care Services

| | |
|----------------------------|-----|
| Families Enrolled | 900 |
| Assessments | 395 |
| Referrals for Medical Care | 126 |

Hearing and Vision Screenings

| | |
|------------------------------|--------|
| Hearing Screenings Performed | 9,453 |
| Vision Screenings Performed | 11,803 |

Totals 2003

Health Promotion

Highlights

- ▶ For information regarding the Bioterrorism Program visit our website at www.bhsj.org.
- ▶ Established Bioterrorism Preparedness Agenda and formed partnerships with community, state, and Centers for Disease Control and Prevention to increase Health Protection Training.
- ▶ Encouraged local health care provider use of the Michigan Children's Immunization Registry in attempt to increase the percent of children fully immunized.

Communicable Disease Prevention & Control

Provides Public Health Code compliance regarding prevention, investigation, and control of defined communicable diseases. Includes tuberculosis, sexually transmitted diseases (STD), HIV/AIDS, animal bites and many other infectious diseases.

| | | |
|------------------------------|-------|--------|
| Infectious Diseases Reported | Total | 15,057 |
| STD Testing | | 1,193 |
| HIV/AIDS Testing | | 540 |

Family Planning

Services provided to assist clients in voluntary choices of spacing children and controlling fertility through reproductive education, health assessment, and contraceptive services. Also provides the Breast and Cervical Cancer Control Program (BCCCP).

| | | |
|--------------------|-------|-------|
| Individuals Served | Total | 3,125 |
| Family Planning | | 92 |
| BCCCP | | |

Immunizations

Services that provide immunizations for vaccine-preventable diseases for children, adults and international travelers. Includes collaboration and assistance with health providers in the Vaccine for Children Program and use of the Michigan Children's Immunization Registry.

| | | |
|-----------|-------|-------|
| Children | Total | 3,722 |
| Adults | | 4,432 |
| Travelers | | 619 |

WIC (Women, Infants & Children)

A Federal nutritional program directed toward increasing health outcomes for pregnant, breast-feeding and post-partum women. Serves infants and children up to 5 years of age from low to middle income families. Includes breast feeding consultations, support, Sudden Infant Death (SIDS) bereavement counseling and follow-up on elevated blood lead levels.

| | | | | |
|------------------|------|-------|------|-------|
| Average Caseload | 2003 | 3,965 | 2002 | 4,304 |
|------------------|------|-------|------|-------|

Diabetes Outreach Network

Administrative role for an autonomous network office that provides multiple activities and education programs that reduce the financial and medical burden of diabetes to the individual, community, and health care provider.

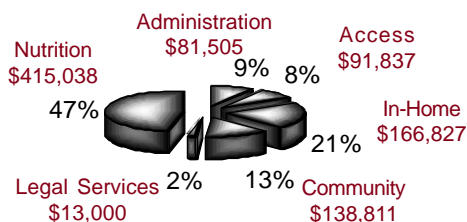
| | | |
|--------------------|-------|--------|
| Individuals Served | Total | 56,839 |
| Events | | 236 |

Highlights

- ▶ For detailed information about the services we offer visit us at www.bhsj.org.
- ▶ Community education sessions held in each county to share the impact of visual impairments.
- ▶ Expanded congregate meals program in St. Joseph County to include restaurants & meal sites.
- ▶ Expanded National Family Caregiver Support Program funded programs:
 - ▶ Transportation & support group activities
 - ▶ Addressed unique family caregiver needs, including the needs of grandparents raising grandchildren/kinship caregivers
 - ▶ Caregiver Seminars held in each county
- ▶ Chosen by Michigan Chapter of the Arthritis Foundation to pilot a marketing campaign called "Physical Activity". The Arthritis Pain Reliever." Intended to raise awareness in adults age 45 and older that moderate physical activity can reduce arthritis pain.

Total Expenditures

(Includes federal, state, and local funding)



Population Served

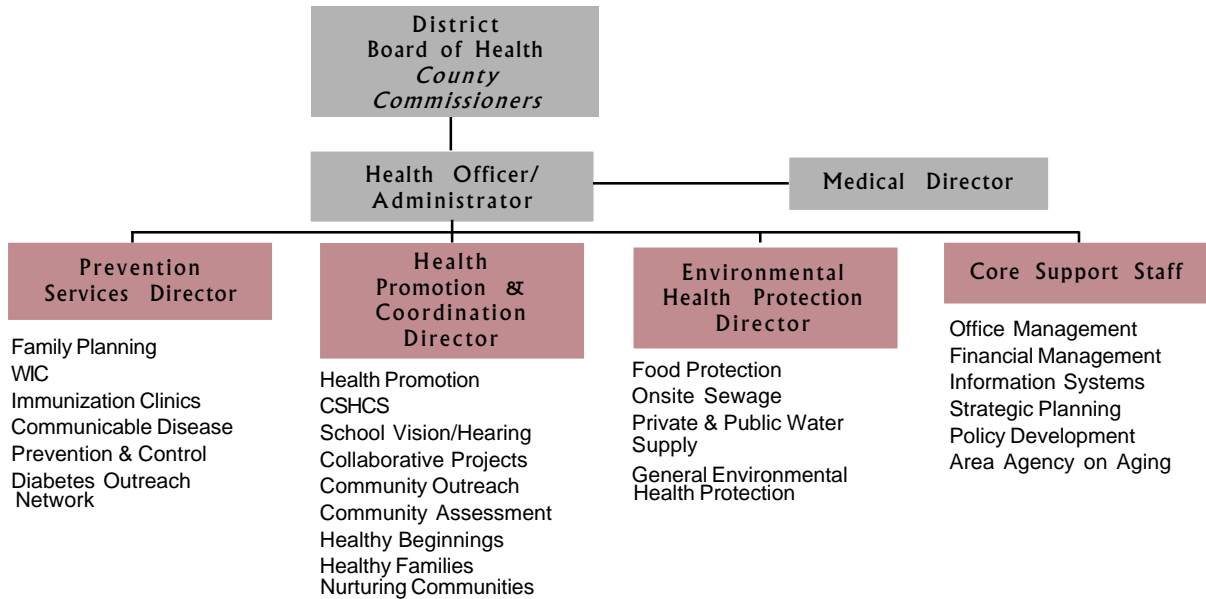
| | | | |
|---------------------|--------|------------------------|-----|
| Non-Minority | 13,540 | African American | 137 |
| Rural | 13,754 | Native American | 13 |
| Under Poverty Level | 3,099 | Hispanic | 10 |
| Minority Poverty | 50 | Asian/Pacific Islander | 4 |
| | | Multiracial | 16 |

Note: Estimated unduplicated counts of clients served under Title III, as reported by providers using the National Aging Program Information System (NAPIS).

Service Units Provided by Type of Service

| Service Type | Branch County | St. Joseph County |
|---|---------------|-------------------|
| Congregate Meals | 40,952 | 18,593 |
| Home Delivered Meals | 29,769 | 57,156 |
| Home Care Assistance (# of hours) | 7,910 | 6,448 |
| Chore (# of hours) | 329 | 384 |
| In-Home Respite (# of hours) | 1,457 | 2,274 |
| Friendly Reassurance (# of contacts) | N/A | 2,436 |
| Case Coordination & Support (# of hours) | 1,104 | 992 |
| Information & Assistance (# of contacts) | 7,602 | N/A |
| Transportation (# of rides) | 8,378 | 7,740 |
| Senior Center Staffing (# of hours) | 1,641 | 6,024 |
| Legal Services (# of hours) | 336 | 55 |
| In-Home Repair (# jobs completed) | N/A | 12 |
| Adult Day Services (# of hours) | 13,504 | 517 |
| Disease Prevention/Health Promotion | N/A | 2,695 |
| Counseling/Support Groups/Training (# of hours) | 50 | 40 |

Organizational Chart



Office Locations

COLDWATER

570 Marshall Rd
 Coldwater, MI 49036
 517-279-9561



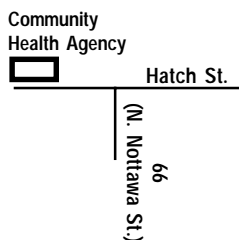
HILLSDALE

20 Care Drive
 Hillsdale, MI 49242
 517-437-7395
 1-888-544-7395



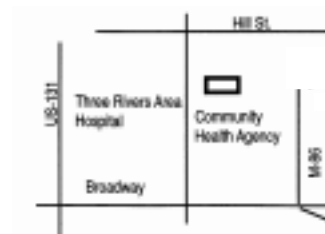
STURGIS

209 E. Hatch
 Sturgis, MI 49091
 269-659-4013
 1-800-258-1093



THREE RIVERS

1110 Hill Street
 Three Rivers, MI 49093
 269-273-2161
 1-800-258-1092



Visit us at www.bhsj.org for clinic calendars, online Environmental Health forms, public health news, reports and more information about our agency's services.

