

*To provide
quality and
accessible local
public health
services with
fiscal responsibility.*

Branch-Hillsdale-St. Joseph Community Health Agency



“Your Local Health Department”

www.bhsj.org

Our Mission

Annual Report 2005/2006

To plan for and deliver a wide range of services according to community needs and collaborate with other community agencies towards the completion of our mission.

Our Vision

Letter to the Community

The Branch-Hillsdale-St. Joseph Community Health Agency continues to excel in providing health services to the citizens of Branch, Hillsdale and St. Joseph counties. Our high quality of public health protection, communicable disease prevention and health promotion is a reflection of the dedicated work of the agency's well trained and experienced staff, as well as the strong commitment and support from the County Board of Commissioners in each of the three counties that we serve. As I complete the first year as the Agency's Public Health Officer, I am pleased to present the Annual Report highlighting your local health department's accomplishments for the fiscal year 2005/2006.

During the past year the Agency prepared for and completed an agency-wide accreditation review. The review was conducted as part of the Michigan Local Public Health Accreditation Program. Recommendations made during the accreditations review have provided guidance to fine tune our programs and services.

During the past year our Emergency Preparedness planning has involved the efforts of Branch, Hillsdale and St. Joseph counties. The Agency has developed an All Hazards Preparedness Plan in collaboration with the community emergency responders.

During the past year our Agency has worked to develop Public Health Dental clinics in three counties. To date we have entered into a joint effort with the Hillsdale Community Health Center to operate a public health dental clinic. Additional clinics are planned for Branch and St. Joseph counties.

We continue our commitment to serving older adults, caregivers and people with disabilities through the Branch-St. Joseph Area Agency on Aging. To better inform and assist the public about services, programs, and living options, our agency is involved in a 3-year pilot project called "Southwest Michigan Long-Term Care Connection".

On behalf of the staff and management, I would like to express our continued commitment to fulfill our mission and obligation to the communities that we serve.

Sincerely,

Stephen R. Todd, R.S., MPA
Health Officer/Administrator

Our Values

- Place the customers of our services at the center of our operations.
- Maintain and improve the quality of services for the benefit of our customers.
- Improve communication and coordination of services within the agency.
- Coordinate services with other locally-based organizations to reduce duplication of effort and improve customer access to appropriate services.
- Provide our services in the most financially responsible manner.
- Provide a positive, rewarding, and challenging atmosphere for all employees.

Board of Health

RODNEY OLNEY Branch County

DALE SWIFT Branch County

BRAD DENSMORE Hillsdale County

KEN LAUTZENHEISER Hillsdale County

MICHAEL DUNLAP St. Joseph County

DAVID PUESHEL St. Joseph County

ROBIN BAKER St. Joseph County

Administrative Staff

Health Officer **STEPHEN TODD, RS, MPA**

Medical Director **JAMES PHILLIPS, MD**

Environmental Health Director **REBECCA BURNS, RS**

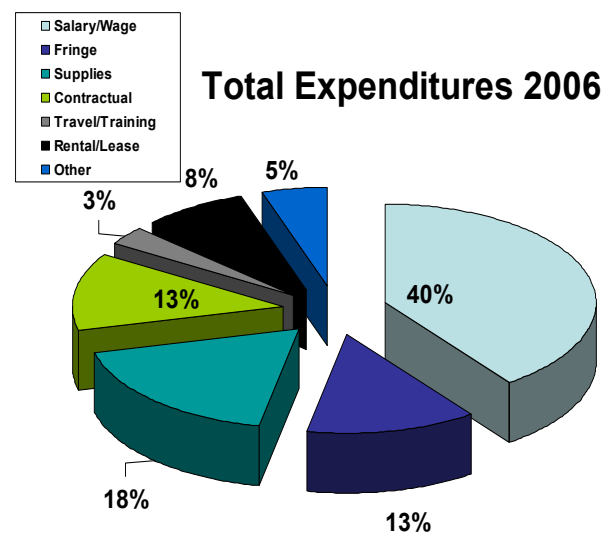
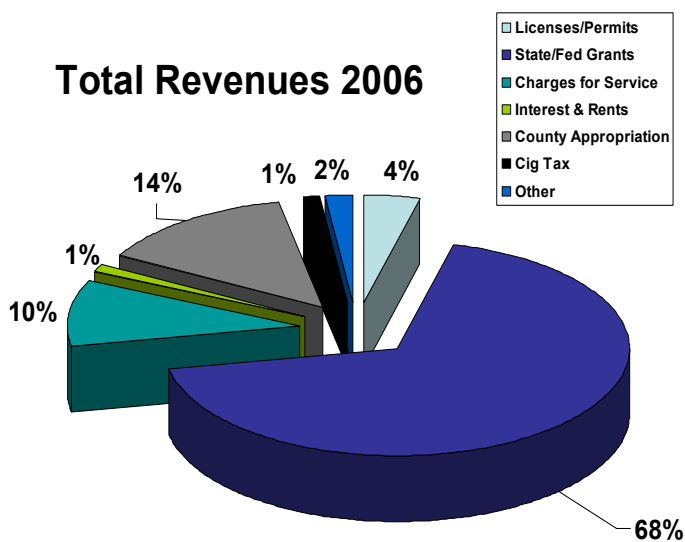
Prevention Services Director **JENNIE SHOLLY, RN MA**

Director of Health Promotions & Education **JOHN ROBERTSON, BAA**

Chief Financial Officer **DONNA COWDEN**

Director of Operations **MAUREEN PETZKO, BA**

Agency Budget 2005/06



Highlights

The Branch-St. Joseph Area Agency on Aging's mission is to provide for a full range of high quality services, programs, and opportunities which support the independence and dignity of older adults and their caregivers across Branch and St. Joseph counties.

- For detailed information about services and support in your area, visit us at www.bhsj.org/AAA
- Completed a successful first year of administering the Care Management Program, serving over 60 individuals and families with over 7,000 hours of care.
- Partnered with three other Area Agencies on Aging in southwest Michigan to develop a Single Point of Entry grant proposal. The proposal was chosen as one of four pilot demonstration sites in the state and began activities in July 2006. As the "Southwest Michigan Long-Term Care Connection", we will be working with older adults and people with disabilities to help minimize confusion by providing unbiased information and assistance about housing, care, and supportive services. Our goal is to enable the consumer to make informed choices. If you have more questions or would like to explore your options, please call us toll free at 1-866-642-4582.

Populations Served

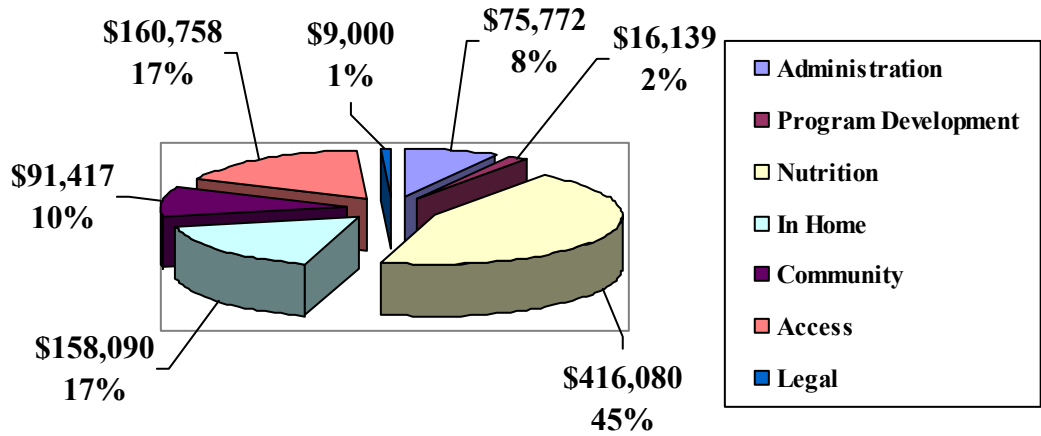
Non-Minority	7,385	African American	212
Rural	7,660	Native American	29
Under Poverty Level	1,230	Hispanic	14
Minority Poverty	64	Asian/Pacific Islander	20
		Multiracial	222

Note: Estimated unduplicated count of clients served under Title III, as reported by providers Using the National Aging Program Information System (NAPIS)

Service Units Provided by Type of Service

Adult Day Services (# hours)	9,064	5,001
Caregiver Supplemental (# goods or services)	82	32
Caregiver Support Group (# hours)	92	26
Caregiver Training (# hours)	92	201
Care Management (# unduplicated clients)	45	17
Care Management (units of service)	99	99
Case Coordination & Support (# hours)	1,138	1,123
Chore Services (# hours)	27	621
Congregate Meals (# meals)	30,828	35,434
Disease Prevention/Health Promotion (# hours)	N/A	505
Friendly Reassurance (# contacts)	209	3,939
Home Care Assistance (# hours)	19,723	8,126
Home Delivered Meals (# meals)	25,190	60,767
Home Repair (# jobs completed)	N/A	19
In Home-Respite (# hours)	3,075	5,886
Information & Assistance (# hours)	564	967
Legal Assistance (# hours)	251	47
Transportation (1- way trips)	5,776	19,602

Expenditures by Service Category



Note: Dollar amounts include all federal, state and local sources of funding.

Our Service Delivery Partners

A+ Nursing Inc.
Absolute Homecare
ADL Homecare
Arcadia-Coldwater
Arcadia-Kalamazoo
Branch Area Transit Authority
Branch County Commission on Aging
Comfort Keepers
Community Action Agency of South Central Michigan
Crossroads Homecare
DPS Secure
E.A.R.S.
Families First
Friends Who Care
Guardian Medical Monitoring
Health & Home Services
Lakeshore Home Health
Legal Services of South Central Michigan
Lifecare Ambulance
Lifespan
New Dawn School
Pines Senior Respite Program
Region 3A Area Agency on Aging - Ombudsman Program
St. Joseph County Commission on Aging
St. Joseph County Department of Human Services
VRI Lifeline

Highlights

- Assisted the Michigan Department of Environmental Quality with investigation of environmental contamination sites.
- Actively participates in the Branch and St. Joseph County Methamphetamine Task Forces to educate the public as to the dangers of clandestine labs.
- Provided food safety/sanitation classes to foodservice workers.
- Assisted in evaluation of clandestine meth lab investigations in residential homes.

On-Site Sewage

Reviews sites proposed for sewage disposal, issuance and/or denial of permits, sewage disposal evaluation, inspection, investigation and enforcement.

Well/Septic Evaluations	25	24	41	90	688
Construction Permits Issued	206	235	284	725	839
Septic Systems Inspected	182	190	165	537	658
Vacant Land Evaluations	17	68	34	119	166

Private and Public Water Supply

These programs are designed to assure both the proper installation of residential water wells and the monitoring and regulating of Type II water supplies to assure safe usable groundwater.

Well Construction Permits Issued	236	226	323	785	943
Well Permits Inspected	227	205	280	712	756
Non-community Water Supply Surveys	8	22	10	40	41

Food Protection

This program provides a systematic approach to minimize the risk of food-borne illness and to ensure that food meets consumer expectations through application of statewide standards for all establishments where food is prepared and /or served to the public.

Establishments Inspected	282	331	470	1,083	1,144
Plan Reviews	9	6	12	27	23
Vending Inspections	32	40	79	151	175
Temporary Establishment Inspections	56	70	121	247	293

Highlights

- To locate information about various community presentations that are offered and many other Health Promotion services visit our website at www.bhsj.org.
- Performed 479 child passenger safety seat checks.
- Distributed and installed 353 child passenger safety seats
- Received more than \$14,700 in grant funding and in-kind donations through the SAFE KIDS chapter.
- Received more than \$10,800 in local funding to provide for an anti-smoking advertising campaign through the Branch-Hillsdale Tobacco Reduction Action Coalition.
- Completed Center for Disease Control (CDC) Booster Seat Grant - 2 year grant to promote booster seat use in St. Joseph County.
- \$2,862 awarded for the Great American Smoke Out Campaign.
- \$10,800 awarded for Advertising from Hillsdale & Branch Community Foundation for Smoking Cessation Campaign.

Health Promotion & Health Education

SAFE KIDS Chapter

SAFE KIDS Events	20	18
Bike Helmets Distributed	336	1,018
Car Seats	353	0

Tobacco Reduction Action Coalition

Organizations Adopting Smoke-Free Policies	4	
Persons Impacted by Smoke-Free Policies	1,483	
Worksites Surveyed for Policies	85	

Healthy Beginnings Program - Hillsdale

Parenting Class Participants	350	183
Home Based Services Provided	852	868

Healthy Families Nurturing Communities

Home Based Services Provided	1,706	1,594
------------------------------	-------	-------

Children's Special Health Care Services

Families Enrolled	700	738
Assessments	408	399
Referrals for Medical Care	73	92

School Age Hearing and Vision Screenings

Hearing Screenings Performed	776	6,772
Vision Screenings Performed	5,037	9,710

Diabetes Outreach Network (SODON)

Professional Continuing Education	513	109
-----------------------------------	-----	-----

Totals 2006		Totals 2005
-------------	--	-------------

Highlights

- Accreditation 2006 was ultimately a successful achievement as a result of significant hard work from Coordinators and staff.
- One full-scale Emergency Preparedness exercise mass clinic in St. Joseph County and a “walk-through” exercise planning of a Neighborhood Emergency Help Clinic was achieved in Hillsdale County in support of collaborative partners.
- The Woman, Infant, Child Nutrition Program has continued to increase enrollments providing strong breastfeeding support and nutrition education components.
- Many new vaccines have been introduced for both children and adults.

Communicable Disease Prevention & Control

Provides Public Health Code compliance regarding prevention, investigation, and control of defined communicable diseases, including tuberculosis, sexually transmitted diseases (STD’s), HIV/AIDS, animal bites and many other infectious diseases.

Infectious Diseases Reported:				
STD Testing & Contact Follow-up	2006	1,657	2005	503
HIV/AIDS Testing & contact follow-up		152		516

Family Planning

Services provided to assist clients in voluntary choices for spacing children and controlling fertility through reproductive education, health assessment, and contraceptive services. Breast and Cervical Cancer Control screenings are also provided through these clinics.

Individuals Served	2006	2,508	2005	2,686
Total Family Planning Services		7,709		8,223
Breast & Cervical Cancer Screening Services		143		395

Immunizations

Services that provide immunizations for vaccine-preventable diseases for children, and adults, including collaboration and assistance with health providers in the Vaccine for Children Program and use of the Michigan Children’s Immunization Registry.

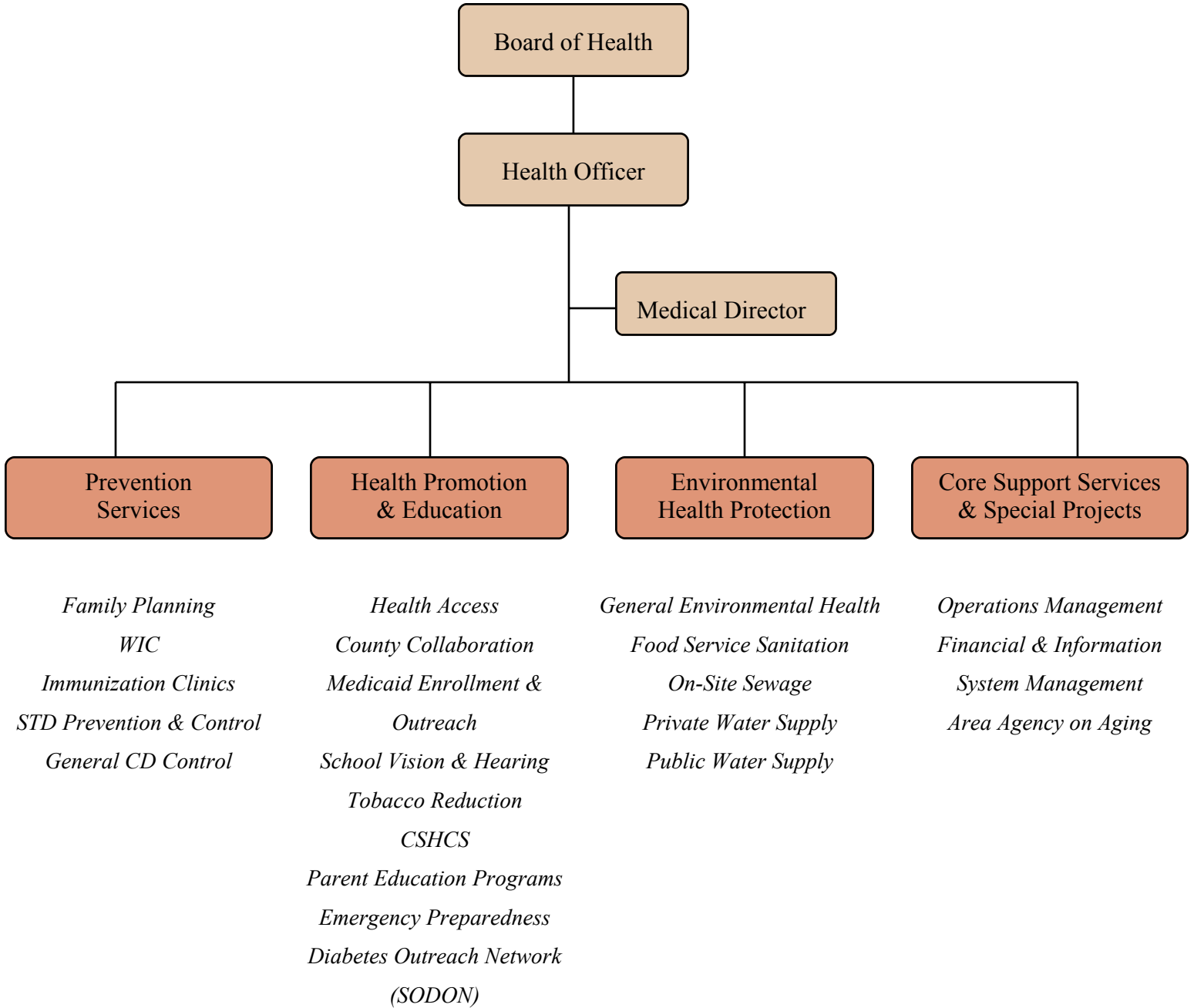
Children	2006	6,953	2005	8,682
Adults		5,828		6,948
Travel Vaccination Program		444		498

WIC (Woman, Infants & Children)

A nutrition and educational program directed toward increasing healthy outcomes for pregnant, breast-feeding and post-partum women. Serves infants and children up to 5 years of age from low to middle income families. Includes breast-feeding consultations, support, Sudden Infant Death (SIDS) bereavement counseling and follow-up on elevated blood lead levels.

Average Monthly Enrollment	2006	5,478	2005	5,224
----------------------------	------	-------	------	-------

Organizational Chart



Branch - Hillsdale - St. Joseph Community Health Agency

What's New on the Web...

[Publications & Reports](#)

Increases community awareness of health issues through press releases or the creation of special reports on selected health topics.

[Health Data and Statistics](#)

County specific data on communicable diseases, motor vehicle data, birth data, hospitalization data and more.

[Downloads](#)

All forms are Adobe Acrobat files and therefore require [Adobe Acrobat Reader](#) to be displayed to view/print them.

[Current Clinic & Program Calendars](#)

Current calendars that show dates and times of clinic services and Healthy Beginnings programs.

[Communicable Disease Data](#)

Up to date tracking of the most common communicable diseases Including; chicken pox, flu, head lice, hepatitis and tuberculosis.

[Employment Opportunities](#)

Available job opportunities within the Branch-Hillsdale-St. Joseph Community Health Agency and other Public Health positions in Michigan.

[Branch County Meth Task Force](#)

The task force provides, up-to-date education services to Branch County to help ensure "Branch County is a meth watch county". The purpose of this task force is to prevent methamphetamine manufacture, sale and use.

[County Health Plan](#)

Residents of Branch, Hillsdale, and St. Joseph counties eligible for the Adult Benefits Waiver (ABW) program are enrolled in the Branch-Hillsdale-St. Joseph Health Plan A. This program is NOT insurance but provides health benefits to low income uninsured residents.

bhsj.org is an interactive website, continuously updated, with the goal of providing comprehensive health information, important downloadable forms, questions and answers to many of your health questions and links to a wide variety of local, state and national resources. We encourage you to surf on over and take a look.

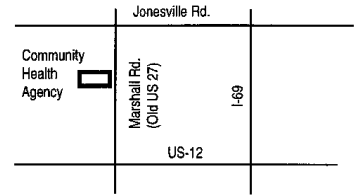
[bhsj.org](#)

Office Locations



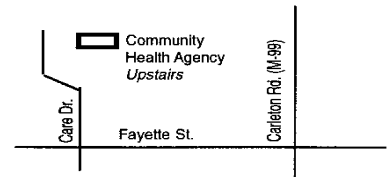
Coldwater - Branch County Office

570 N Marshall Rd.
Coldwater, MI 49036
Telephone: 517-279-9561
Fax: 517-278-2923



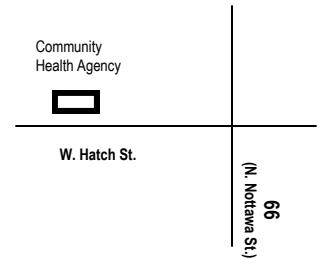
Hillsdale - Hillsdale County Office

20 Care Drive
Hillsdale, MI 49242
Telephone: 517-437-7395
Toll Free: 888-544-7395
Fax: 517-437-0166



Sturgis - St. Joseph County Office

209 West Hatch Street
Sturgis, MI 49091
Telephone: 269-659-4013
Toll Free: 800-258-1093



Three Rivers - St. Joseph County Office

1110 Hill Street
Three Rivers, MI 49093
Telephone: 269-273-2161
Toll Free: 800-258-1092

