

*To provide
quality and
accessible local
public health
services with
fiscal responsibility.*

Branch-Hillsdale-St. Joseph Community Health Agency



“Your Local Health Department”

www.bhsj.org

Our Mission

Annual Report 2007

To plan for and deliver a wide range of services according to community needs and collaborate with other community agencies towards the completion of our mission.

Our Vision

Letter to the Community

The Branch-Hillsdale-St. Joseph Community Health Agency continues to excel in providing health services to the citizens of Branch, Hillsdale and St Joseph counties. Our high quality of public health protection, communicable disease prevention and health promotion is a reflection of the dedicated work of this agency's well-trained and experienced staff, as well as the strong commitment and support from the County Boards of Commission in each of our three counties. I am pleased to present the annual report highlighting your local health department's accomplishments for the fiscal year 2006/07.

During the Board of Health meeting in May of 2007, this Agency was awarded with our Certificate of Accreditation by the Michigan Departments of Community Health, Agriculture and Environmental Quality. The certificate was the culmination of a State accreditation review process that was conducted as part of the Michigan Local Public Health Accreditation Program. Recommendations made during the accreditation review have provided guidance to improve the programs and services that we offer.

In our continuing efforts to prepare this agency to serve the communities of our 3 counties, we have participated in several Emergency Preparedness exercises. The drills have proven extremely useful by helping to coordinate our response efforts with each county's law enforcement agencies. In the spring of 2007, this agency was involved in a major Emergency Preparedness training exercise held with Hillsdale College and the Hillsdale Community Health Center.

Protection of the public's health is our primary mission. Our Agency continues to be involved with activities and projects to increase the access to health care in our communities. We are the primary agency for the enrollment of county residents into the Branch, Hillsdale, St. Joseph County Health Plan. We will soon be opening a public health dental clinic in St. Joseph County and we are planning to have similar dental clinics in Branch and Hillsdale Counties. We continue to be committed to coordinating services to older adults, caregivers and people with disabilities through the Branch & St. Joseph Area Agency on Aging.

On behalf of the staff and the Board of Health for this agency, I express our commitment to provide the best public health care services that are available.

Sincerely,



Stephen R. Todd, R.S., MPA
Health Officer/Administrator

Board of Health

RODNEY OLNEY Branch County

DALE SWIFT, Chair Branch County

ALAN RINGENBERG Hillsdale County

KEN LAUTZENHEISER Hillsdale County

MICHAEL DUNLAP St. Joseph County

DAVID PUESCHEL, Vice Chair St. Joseph County

ROBIN BAKER St. Joseph County

Administrative Staff

Health Officer **STEPHEN TODD, RS, MPA**

Medical Director **JAMES PHILLIPS, MD**

Environmental Health Director **REBECCA BURNS, RS**

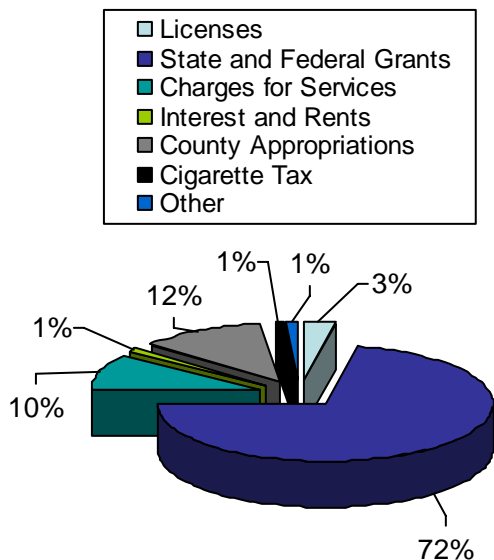
Prevention Services Director **JENNIE SHOLLY, RN MA**

Director of Health Promotions & Education **JOHN ROBERTSON, BAA**

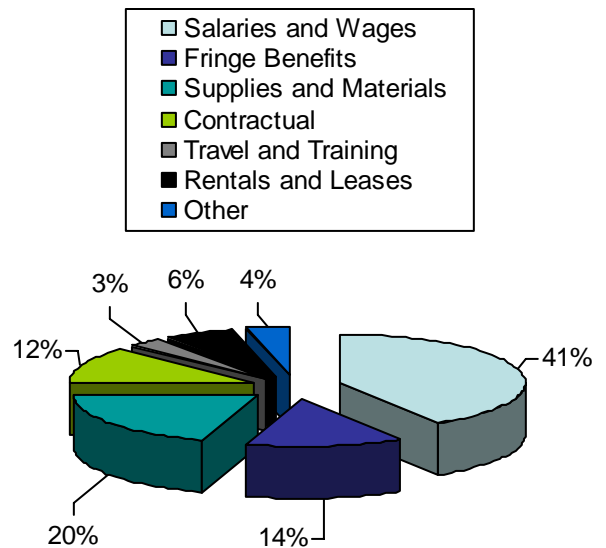
Chief Financial Officer **DONNA COWDEN**

Director of Operations **MAUREEN PETZKO, BA**

Total Revenues 2006/07



Total Expenditures 2006/07



Branch, Hillsdale and St. Joseph County Health Profiles

Profile 2006

	<i>Branch County</i>	<i>Hillsdale County</i>	<i>St. Joseph County</i>	<i>Michigan</i>
Population	45,875	47,206	62,777	10,095,643
Marriage	299	335	500	59,400
Divorce	205	234	288	35,022
% of population 65+ years	13.7%	14.2%	13.2%	12.5%

Leading Causes of Death 2006— Rates per 100,000 Population

	<i>Branch County</i>	<i>Hillsdale County</i>	<i>St. Joseph County</i>	<i>Michigan</i>
Heart disease	235.4	290.2	286.7	239.9
Cancer	224.5	199.1	232.6	199.7
Stroke	61.0	59.3	31.9	47.0
COPD	28.3	42.4	44.6	44.3
Injury	48.0	36.0	60.5	35.2
Diabetes	48.0	25.4	43.0	28.0
Alzheimer's	24.0	12.7	15.9	23.1
Flu	17.4	14.8	22.3	16.6
Kidney	15.3	--	15.9	15.8
Suicide	--	--	—	11.2

Maternal/Infant Health Indicators 2006

	<i>Branch County</i>	<i>Hillsdale County</i>	<i>St. Joseph County</i>	<i>Michigan</i>
Total Births	629	567	937	127,537
Number of Teen Births (15-19)	79	70	91	12,322
Teen Pregnancy Rate (per 1,000 births)	73.4	54.1	62.0	54.0
% low Birth Weight	6.4	7.1	8.4	8.4
% very low Birth Weight	-	1.9	1.4	1.6
% inadequate Prenatal Care	9.1	8.8	8.3	6.4
Infant Mortality Rate (per 1,000 births) (2004-2006)	8.7	4.0	7.7	7.6

Economic Indicators

	<i>Branch County</i>	<i>Hillsdale County</i>	<i>St. Joseph County</i>	<i>Michigan</i>
Unemployment 2007	7.3	8.6	6.3	7.2
Median Family Income 2007	51,100	52,400	52,500	60,500
Children Receiving Free & Reduced lunch (185% of Poverty and below) 2006-07	40.8	44.9	46.6	38.1

Highlights

The Branch-St. Joseph Area Agency on Aging's mission is to provide for a full range of high quality services, programs, and opportunities which support the independence and dignity of older adults and their caregivers across Branch and St. Joseph Counties.

- For detailed information about services and support in your area, visit us at www.bhsj.org/AAA
- Care Management served over 50 individuals and families with over 6,000 hours of care.
- Actively partnering with Pines Behavioral Health Services to implement Healthy IDEAS, an evidence-based prevention program. Our hope is to expand in 2008.
- The Southwest Michigan Long-Term Care Connections project has seen many significant achievements in 2007:
 - Implementation of a mandatory screen
 - Establishment of blended call centers
 - Establishment of independent review/counseling capability

Our goal has been to improve access to long-term care supports and services by strengthening partnerships, establishing minimum standards of service, fostering consistency, and emphasizing the consumers perspective in all activities. If you have more questions or would like to explore your options, please call us toll free at 1-866-642-4582.

Populations Served

Non-Minority	9,044	African American	194
Rural	9,529	Native American	28
Under Poverty Level	1,193	Hispanic	19
Minority Poverty	59	Asian/Pacific Islander	26
		Multiracial	218

Note: Estimated unduplicated count of clients served under Title III, as reported by providers Using the National Aging Program Information System (NAPIS)

Service Units Provided by Type of Service

Adult Day Services	8,759	5,013
Caregiver Defined Supplemental	POS	9
Caregiver Support Group	104	48
Caregiver Counseling	N/A	341
Care Training	POS	252
Care Management	-	212
Case Coordination & Support	1,103	1,168
Chore Services	54	662
Congregate Meals	10,768	36,653
Disease Prevention/Health Promotion	684	1,836
Friendly Reassurance	853	5,287
Home Care Assistance	19,160	7,256
Home Delivered Meals	22,920	62,409
Home Repair	4	21
In Home-Respite	3,857	3,072
Information & Referral	1,903	825
Legal Assistance	-	303
Transportation	5,722	19,723

Highlights

- Assisted the Michigan Department of Environmental Quality with the investigation of environmental contamination sites.
- Actively participates in the Branch and St. Joseph County Methamphetamine Task Forces to educate the public as to the dangers of clandestine labs.
- Provided food safety/sanitation classes to foodservice workers.
- Assisted in evaluation of clandestine meth lab investigations in residential homes.

On-Site Sewage

Reviews sites proposed for sewage disposal, issuance and/or denial of permits, sewage disposal evaluation, inspection, investigation and enforcement.

Well/Septic Evaluations		90		42
Construction Permits Issued	2006	725	2007	606
Septic Systems Inspected		537		519
Vacant Land Evaluations		119		83

Private and Public Water Supply

These programs are designed to assure both the proper installation of residential water wells and the monitoring and regulating of Type II water supplies to assure safe usable groundwater.

Well Construction Permits Issued		785		663
Well Permits Inspected	2006	712	2007	525
Non-community Water Supply Surveys		40		39

Food Protection

This program provides a systematic approach to minimize the risk of food-borne illness and to ensure that food meets consumer expectations through application of statewide standards for all establishments where food is prepared and /or served to the public.

Establishments Inspected		1,083		941
Plan Reviews		27		12
Vending Inspections	2006	151	2007	134
Temporary Establishment Inspections		247		241

Highlights

- To locate information about various community presentations that are offered and many other Health Promotion services visit our website at www.bhsj.org.
- Distributed and installed 190 child passenger safety seats
- \$2,862 awarded for the Great American Smoke Out Campaign.
- \$10,800 awarded for Advertising from Hillsdale & Branch Community Foundation for Smoking Cessation Campaign.

Health Promotion & Health Education

SAFE KIDS Chapter

SAFE KIDS Events	20	24
Bike Helmets Distributed	336	301
Car Seats	353	190

Tobacco Reduction Action Coalition

Organizations Adopting Smoke-Free Policies	5	7
Persons Impacted by Smoke-Free Policies	1,151	1,109

Healthy Beginnings

Hillsdale County

Parenting Class Participants	350	542
Home Based Services Provided	852	1,318

Healthy Families Nurturing Communities

St. Joseph County

Home Based Services Provided	1,706	1,619
------------------------------	-------	-------

Children's Special Health Care Services

Families Enrolled	700	704
Assessments	408	209
Referrals for Medical Care	73	59

School Age Hearing and Vision Screenings

Hearing Screenings Performed	776	7,480
Vision Screenings Performed	5,037	11,419

Diabetes Outreach Network (SODON)

Professional Continuing Education	513	426
-----------------------------------	-----	-----

Totals 2006		Totals 2007
--------------------	--	--------------------

Highlights

- The Immunization Program is focusing on increasing adolescent immunization levels, including forming a coalition to promote awareness and action. .
- Immunization staff are also training and preparing VFC providers to roll into a centralized vaccination distribution program with online inventory and ordering capacity.
- The WIC program spent the year gearing for the Electronic Benefits Transfer card in place of coupons incorporating much training of staff and participants. Participant numbers are closing in on 6000 a month.
- WIC is administratively ready to launch into the new MI WIC online data entry system replacing the archaic M-Trax. This will provide more efficient access to quality control data.

Communicable Disease Prevention & Control

Provides Public Health Code compliance regarding prevention, investigation, and control of defined communicable diseases, including tuberculosis, sexually transmitted diseases (STD's), HIV/AIDS, animal bites and many other infectious diseases.

Infectious Diseases Reported	2006	10,011	2007	10,247
STD Testing & Contact Follow-up		1,242		890
HIV/AIDS Testing & contact follow-up		174		212

Family Planning

Services provided to assist clients in voluntary choices for spacing children and controlling fertility through reproductive education, health assessment, and contraceptive services. Breast and Cervical Cancer Control screenings are also provided through these clinics.

Individuals Served	2006	2,508	2007	1,975
Total Family Planning Services		7,709		5,244
Breast & Cervical Cancer Screening Services		143		113

Immunizations

Services that provide immunizations for vaccine-preventable diseases for children, and adults, including collaboration and assistance with health providers in the Vaccine for Children Program and use of the Michigan Children's Immunization Registry.

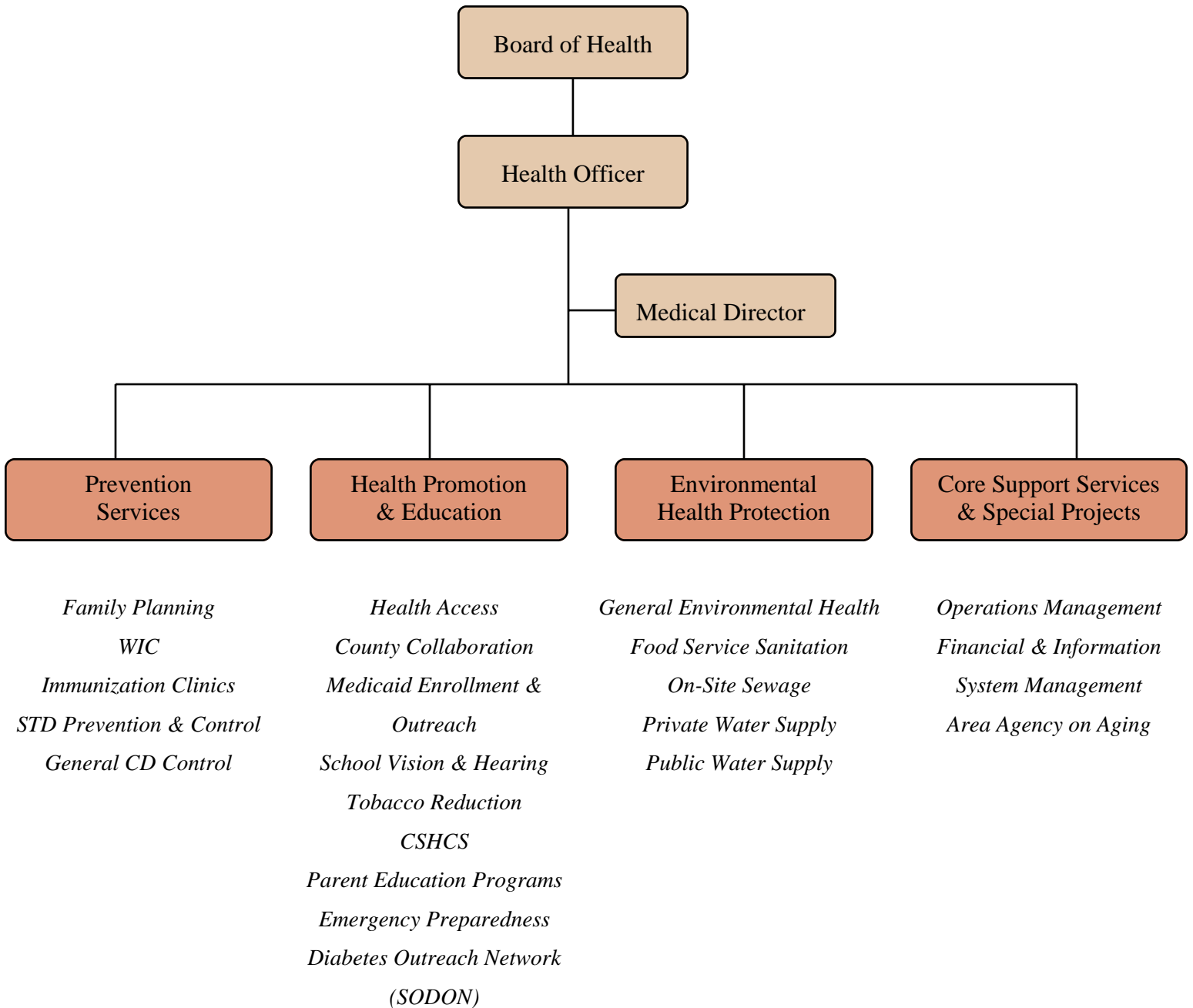
Children	2006	6,953	2007	7,254
Adults		5,828		4,711
Travel Vaccination Program		444		118

WIC (Woman, Infants & Children)

A nutrition and educational program directed toward increasing healthy outcomes for pregnant, breast-feeding and post-partum women. Serves infants and children up to 5 years of age from low to middle income families. Includes breast-feeding consultations, support, Sudden Infant Death (SIDS) bereavement counseling and follow-up on elevated blood lead levels.

Average Monthly Enrollment	2006	5,478	2007	5,780
----------------------------	------	-------	------	-------

Organizational Chart



Branch - Hillsdale - St. Joseph Community Health Agency

What's new on the web...

www.bhsj.org

[Publications & Reports](#)

Increases community awareness of health issues through press releases or the creation of special reports on selected health topics.

[Health Data and Statistics](#)

County specific data on communicable diseases, motor vehicle data, birth data, hospitalization data and more.

[Downloads](#)

All forms are Adobe Acrobat files and therefore require Adobe Acrobat Reader to be displayed to view/print them.

[Current Clinic & Program Calendars](#)

Current calendars that show dates and times of clinic services and Healthy Beginnings programs.

[Communicable Disease Data](#)

Up to date tracking of the most common communicable diseases Including; chicken pox, flu, head lice, hepatitis and tuberculosis.

[Employment Opportunities](#)

Available job opportunities within the Branch-Hillsdale-St. Joseph Community Health Agency and other Public Health positions in Michigan.

[Branch County Meth Task Force](#)

The task force provides, up-to-date education services to Branch County to help ensure "Branch County is a meth watch county". The purpose of this task force is to prevent methamphetamine manufacture, sale and use.

[County Health Plan](#)

Residents of Branch, Hillsdale, and St. Joseph counties eligible for the Adult Benefits Waiver (ABW) program are enrolled in the Branch-Hillsdale-St. Joseph Health Plan A. This program is NOT insurance but provides health benefits to low income uninsured residents.

bhsj.org is an interactive website, continuously updated, with the goal of providing comprehensive health information, important downloadable forms, questions and answers to many of your health questions and links to a wide variety of local, state and national resources. We encourage you to surf on over and take a look.

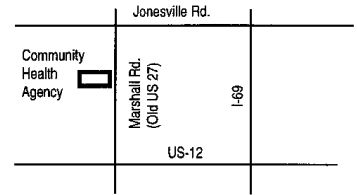
bhsj.org

Office Locations



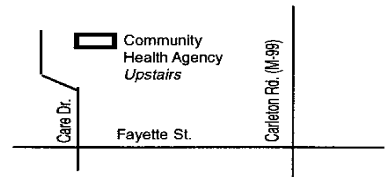
Coldwater - Branch County Office

570 N Marshall Rd.
Coldwater, MI 49036
Telephone: 517-279-9561
Fax: 517-278-2923



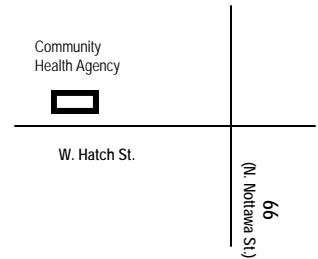
Hillsdale - Hillsdale County Office

20 Care Drive
Hillsdale, MI 49242
Telephone: 517-437-7395
Toll Free: 888-544-7395
Fax: 517-437-0166



Sturgis - St. Joseph County Office

209 West Hatch Street
Sturgis, MI 49091
Telephone: 269-659-4013
Toll Free: 800-258-1093
Fax: 269-651-6090



Three Rivers - St. Joseph County Office

1110 Hill Street
Three Rivers, MI 49093
Telephone: 269-273-2161
Toll Free: 800-258-1092

