

Branch-Hillsdale-St. Joseph Community Health Agency



“Your Local Health Department”

Our Mission:

*We promote optimal health to prolong life by preventing disease
and assuring the protection of the public’s health
in our community and environment.*

www.bhsj.org

*Our Vision:
We envision
positively impacting
the health
of individuals,
families,
communities
and the environment
through
responsiveness,
competence
and collaboration.*

Our Vision

Letter to the Community

Letter to the Community::

Much of Fiscal Year 2014/15 was spent in preparation and review, as the Health Department and its staff planned for the future. From these efforts, the annual accomplishments for the Branch-Hillsdale-St. Joseph Community Health Agency are as follows:

In October 2014, the Health Department, in partnership with the Community Health Center of Branch County, received a Director's Award from the Michigan Department of Health and Human Services for its innovative School-based Telehealth Program. The award was presented at the 2014 Premier Public Health Conference. The program is the first of its kind in Michigan and is now being replicated in six other school sites across the state.

Also in October 2014, the Health Department successfully partnered with Sturgis Hospital and Sturgis Public Schools to establish a school-linked clinic that serves students, ages 10 to 21 years, from Sturgis and its surrounding communities. The clinic, which is adjacent to the high school, is open three days a week, provides primary care and mental health services, and is easily accessible to students. Funding for the clinic is provided by the Michigan Department of Health and Human Services. The establishment of this clinic represents the second successful partnership between the health department, a local hospital and schools in St. Joseph County.

In February 2015, the Health Department completed its comprehensive strategic planning process which reflected input from its customers, partners, staff, administration and the Board of Health. During this planning process, the Health Department modified its mission, vision and value statements and committed itself to improving its infrastructure and promoting the delivery of high quality public health services that address community needs and result in health status improvements.

In March 2015, the Health Department successfully completed the Michigan Local Public Health Accreditation Program's site evaluation for Cycle 6, which was conducted by the Michigan Departments of Health and Human Services, Rural and Agricultural Development and Environmental Quality. The Agency met all applicable essential and important indicators, receiving a full accreditation with commendation designation.

In July 2015, the Health Department was recognized by the National Association of County and City Health Officials (NACCHO) for its ability to plan for, respond to, and recover from public health emergencies. The local health department demonstrated these capabilities by meeting the comprehensive preparedness benchmarks required by Project Public Health Ready (PPHR), a unique partnership between NACCHO and the Centers for Disease Control and Prevention, and joins an elite group of 400 health departments nationwide to have received this award.

Planning for success involves knowing where you have been, what you have done well and charting a course for the future. The Branch-Hillsdale-St. Joseph Community Health Agency is continually working to build upon its past achievements and maximize its resources as it strives towards excellence. On behalf of the Branch-Hillsdale-St. Joseph Community Health Agency, its Board of Health and the entire staff, I would like to present the FY 2014/15 Annual Report.

Sincerely,



Stephen R. Todd, MPA, RS
Health Officer/Administrator

- ROBIN BAKER** St. Joseph County
- BRUCE CASWELL** Hillsdale County
- DALE SWIFT, Chair** Branch County
- RODNEY OLNEY** Branch County
- MARK WILEY, Vice-Chair** Hillsdale County
- ALLEN BALOG** St. Joseph County

Administrative Staff

- STEPHEN TODD, MPA, RS** Health Officer
- H. LAUREN VOGEL, DO** Medical Director
- REBECCA BURNS, MPH, RS** Environmental Health Director
- KIMBERLY WILHELM, BSN, RN** Prevention Services Director
- THERESA CHRISTNER, MA** Health Promotions & Education Director
- STEVEN RUTZ, MSA** Chief Financial Officer
- MAUREEN PETZKO, BA** Director of Operations

Branch-Hillsdale-St. Joseph Community Health Agency

County Health Profiles

Profile (2014)

	Branch County	Hillsdale County	St. Joseph County	Michigan
Population	43,545	45,830	60,946	9,909,877
Marriage	264	321	456	57,071
Divorce	179	200	257	29,708
% of Population 65+ Years	16.6%	17.7%	16.5%	15.4%

Leading Causes of Death — Age Adjusted Rates per 100,000 (2012 - 2014)

	Branch County	Hillsdale County	St. Joseph County	Michigan
Heart Disease	211.4	218.9	241.0	199.3
Cancer	171.5	189.6	179.4	173.0
Chronic Lower Respiratory Diseases	72.7	71.9	59.5	45.4
Unintentional Injuries	37.3	42.4	44.7	39.2
Stroke	53.2	43.5	39.6	37.1
Alzheimer's Disease	**	**	**	26.4
Diabetes Mellitus	32.8	15.3	38.9	23.4
Kidney Disease	**	**	**	14.2
Pneumonia & Influenza	17.5	16.8	14.7	14.8
Suicide	**	**	**	12.8

Maternal/Infant Health Indicators (2014)

	Branch County	Hillsdale County	St. Joseph County	Michigan
Total Births	530	560	825	114,460
Number of Teen Births (15-19)	39	49	62	6,968
Teen Pregnancy Rate (per 1,000 births)	40.0	38.7	45.6	34.8
% Low Birth Weight	5.8%	4.5%	7.9%	8.4%
% Very Low Birth Weight	**	**	1.3%	1.5%
% Inadequate Prenatal Care—Kessner Index	14.3%	9.8%	13.6%	8.9%
Infant Mortality Rates per 1,000 (2012-14)	6.9	**	7.9	6.9

Economic Indicators (2014)

	Branch County	Hillsdale County	St. Joseph County	Michigan
% Unemployment (Annual Rate - Not Seasonally Adjusted)	6.6%	7.0%	5.8%	7.3%
Median Household Income (2013)	\$46,371	\$44,780	\$43,687	\$49,800
% Children Receiving Free & Reduced-Lunch (185% of Poverty and Below)	51.6%	52.7%	58.4%	46.7%

***Rate does not meet standards of precision or reliability*

Public Health is... Prevention, Protection, Promotion...

ENVIRONMENTAL HEALTH

*On-Site Sewage

Reviews sites proposed for sewage disposal, issuance and/or denial of permits, sewage disposal evaluation, inspection, investigation and enforcement.

	2014	2015
Well/Septic Evaluations	22	36
Construction Permits	321	389
Septic Systems Inspected	274	296
Vacant Land Evaluations	20	22

*Private and Public Water Supply

These programs are designed to assure both the proper installation of residential water wells and the monitoring and regulating of Type II water supplies to assure safe useable groundwater.

	2014	2015
Well Construction Permits Issued	478	445
Well Permits Inspected	448	367
New Water Supplies Approved	260	376
Non-community Water Supply	100	88

*Food Protection

This program provides a systematic approach to minimize the risk of food-borne illness and to ensure that food meets consumer expectations through application of statewide standards for all establishments where food is prepared and/or served to the public.

	2014	2015
Establishment Inspections	970	938
Plans Reviewed	18	20
Vending Inspections	90	88
Temporary Establishment Inspections	225	228

HEALTH PROMOTION

Health Education

Educational presentations include: Contraception, Sexually Transmitted Diseases, HIV/AIDS, Nutrition Education and other general health information.

	2014	2015
Community Events	53	61
Educational Presentations	35	54

Safe Kids Coalition

Safe Kids Worldwide is the first and only global organization dedicated solely to the prevention of accidental childhood injury - the number one killer of children ages 14 and under.

	2014	2015
Safe Kids Events	27	21
Bike Helmets Distributed	11	0
Car Seats Checked	544	553

Tobacco Reduction Action Coalition (TRAC)

TRAC seeks to improve the health of the people of Branch, Hillsdale and St. Joseph Counties by encouraging the elimination or reduction of tobacco use.

	2014	2015
Community Events/Presentations	26	69
Policy Assistance To Schools	24	14

Children's Special Health Care Services

This county-based program helps pay for specialized medical treatment for children and some adults with chronic and severe medical conditions.

	2014	2015
Individuals Enrolled	721	711
Assessments	958	708
Referrals for Medical Care	25	20

*School Age Hearing and Vision Screenings

Provides periodic hearing and vision screening to children from age three through high school.

	2014	2015
Hearing Screening Performed	7,205	7,870
Vision Screenings Performed	12,602	12,236

PREVENTION SERVICES

*Communicable Disease Prevention & Control

Provides Public Health Code compliance regarding prevention, investigation, and control of defined communicable diseases, including tuberculosis, sexually-transmitted diseases (STDs), HIV/AIDS, animal bites and many other infectious diseases.

	2014	2015
Infectious Diseases Reported	13,291	13,426
STD Testing & Contact Follow-up	233	338
HIV/AIDS Testing & Contact Follow-up	107	70

*Immunizations

Services that provide immunizations for vaccine-preventable diseases for children and adults. Includes collaboration and assistance with health providers in the Vaccine for Children Program and use of the Michigan Care Improvement Registry.

	2014	2015
Children Vaccinated	7,026	7,090
Adults Vaccinated	4,186	3,045
Travel Vaccines Given	204	261
Total Vaccines Given	11,416	10,396

**Essential Local Public Health Services*

through Core Public Health Services

Women, Infants & Children (WIC)

A nutrition and educational program directed toward increasing healthy outcomes for pregnant and breast-feeding woman, infants and children up to 5 years of age.

	<u>2014</u>	<u>2015</u>
Average Monthly Participation	5,273	5,020

WIC Peer Breastfeeding Support Program

A peer counselor program for WIC participants that provides mother-to-mother support to encourage breastfeeding.

	<u>2014</u>	<u>2015</u>
Breastfeeding Initiation Rates	88%	87%
Peer Counselor Contacts Made With WIC Clients	4,091	3,332



Area
Agency on
Aging (III-C)
Branch-St. Joseph

**AREA AGENCY ON AGING
(III-C) Branch-St. Joseph**

Over the past year, the Area Agency on Aging has actively developed programs and partnerships across the two-county planning and service area. Here are a few highlights:

- **Elder Abuse Prevention and Awareness** activities continued throughout 2015, including a multi-disciplinary training for St. Joseph County law enforcement in May. Newly-enacted laws, investigative approaches and valuable dialogue occurred during this period. The training event sparked St. Joseph County's key officials to begin revising and enhancing the Vulnerable Adult Protocol.

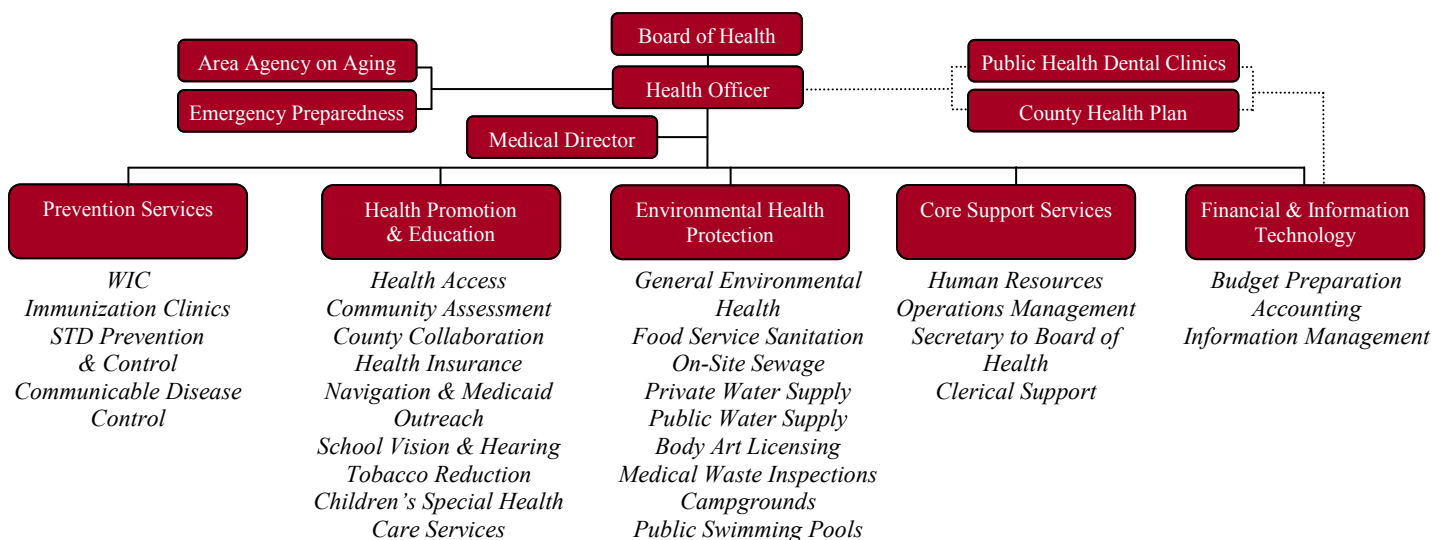
Branch County's Elder Abuse Taskforce presented four educational sessions over the summer in an effort to raise awareness and provide valuable information to the community on topics such as:

- Personal Safety
- Banking/Internet Safety
- Housing Issues
- Legal Assistance

- **Health and Wellness Program Expand!** As one of Michigan's 16 Area Agencies on Aging funded by the Michigan Health Endowment Fund, the region is involved in the "Great at Any Age" initiative. The year also resulted in the enhancing of Diabetes PATH and Matter of Balance courses, two evidence-based programs designed to assist participants in learning self-management techniques and skills for health issues, so as to assure independence. Class leaders were recruited, training and classes were offered and those who participated in the courses received incentives. More classes are scheduled for 2016!

Service	Total	Units
Operations	\$84,532	
Nutrition	\$458,421	268,806
In-Home	\$158,724	67,337
Community	\$87,924	14,102
Access	\$264,532	52,327
Legal	\$10,000	252
Populations Served		
Non-Minority	4,037	Native American 11
Rural	3,841	Hispanic 63
Under Poverty-level	701	Asian/Pacific 7
Minority Poverty	68	Multiracial 480
African American	92	

Organizational Chart



Office Directory

Coldwater (517) 279-9561
570 N. Marshall Road
Coldwater, MI 49036

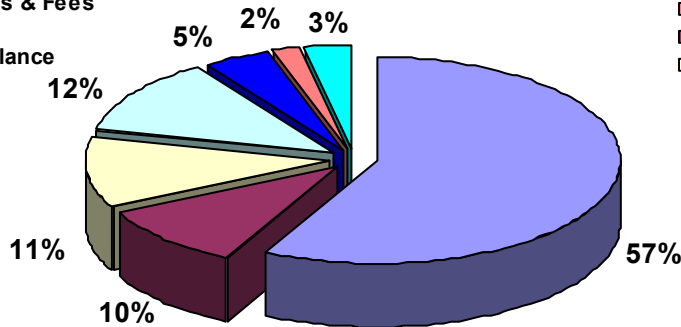
Hillsdale (517) 437-7395
20 Care Drive
Hillsdale, MI 49242

Three Rivers (269) 273-2161
1110 Hill Street
Three Rivers, MI 49093

Fiscal Year 2014/15 Total Annual Budget Based on Actuals = \$5,815,748

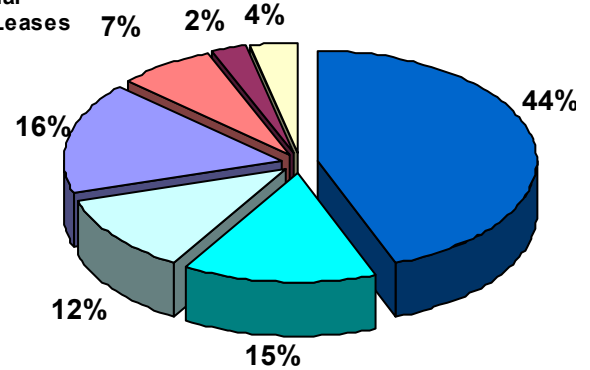
Total Revenues 2014/15

- State & Federal Grants
- State ELPHS
- County Appropriations
- Charges for Services
- Licenses & Fees
- Other
- Fund Balance



Total Expenditures 2014/15

- Salaries and Wages
- Fringe Benefits
- Supplies and Materials
- Contractual
- Rental & Leases
- Travel
- Other

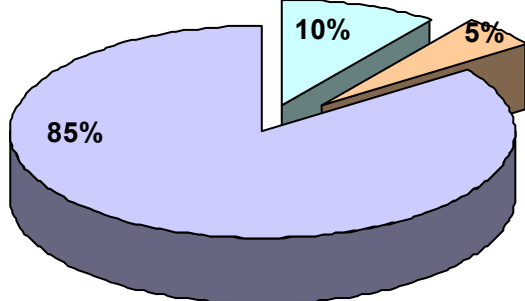


2015 Public Health Dental Services through My Community Dental Centers

Hillsdale Dental Clinic
2,643 Unduplicated Patients

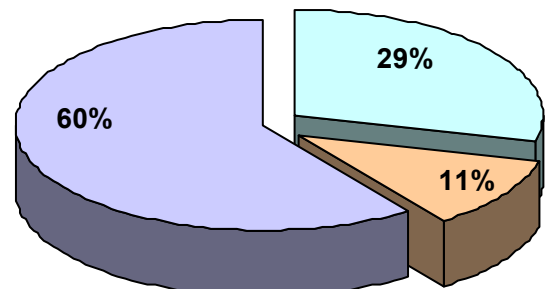
Three Rivers Dental Clinic
3,429 Unduplicated Patients

Age Distribution of Patients



■ < 15 years ■ 15-20 years ■ >20 years

Age Distribution of Patients



■ < 15 years ■ 15-20 years ■ >20 years

Dental Health Services

Providing comprehensive dental services to all ages within the community.

	<u>Hillsdale -2015</u>	<u>Three Rivers-2015</u>
Total Number of Patient Visits	6,414	7,764
Service Mix:		
% Medicaid	50%	33%
% Delta Healthy Kids	10%	30%
% Healthy Michigan Plan	32%	24%
% Uninsured	6%	6%
% Other	2%	7%