

**BRANCH-HILLSDALE-ST. JOSEPH**  
**COMMUNITY HEALTH**  
**AGENCY** | YOUR LOCAL  
HEALTH DEPARTMENT

# ANNUAL REPORT

## 2018



# Board of Health



**Terri Norris**  
Branch County



**Bruce Caswell**  
Hillsdale County  
(Vice Chairperson)



**Allen J. Balog**  
St. Joseph County



**Donald Vrablic**  
Branch County  
(Chairperson)



**Mark E. Wiley**  
Hillsdale County



**Kathy Pangle**  
St. Joseph County

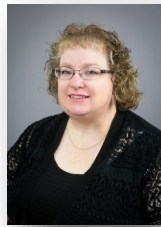
# Administrative Staff



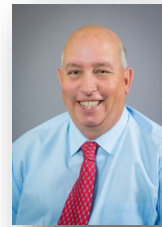
**Rebecca Burns, MPH, RS**  
Health Officer



**Dr. H. Lauren Vogel, DO, MPH**  
Medical Director



**Theresa Fisher**  
Director of  
Administrative Services

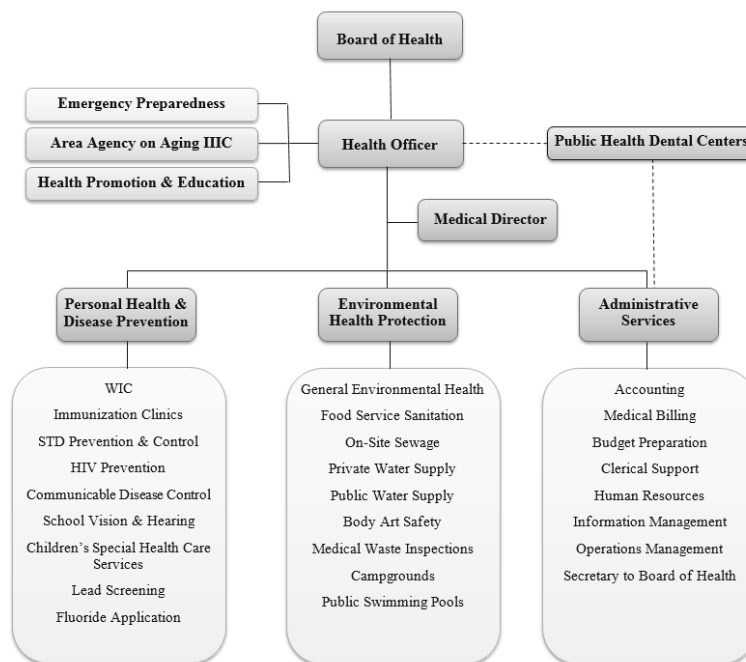


**Paul Andriacchi, REHS**  
Director of  
Environmental Health



**Yvonne Atwood, RN, BSN**  
Director of Personal  
Health & Disease  
Prevention

# Organizational Chart



# Letter to the Community

Letter to the Community:

At the Branch-Hillsdale-St. Joseph Community Health Agency, we want to be, “Your Local Health Department” and the Agency’s team works hard every day to put our clients first. I’m pleased to provide this Annual Report that highlights how we have put the citizens of Branch, Hillsdale, and St. Joseph counties first during fiscal year 2018.

Fiscal year 2018 (FY18) found Your Local Health Department completing an accreditation review with the state departments. The Michigan Local Public Health Accreditation Program began statewide accreditation of 45 Michigan local health departments in 1998, making the Agency’s FY18 review the 7th cycle. Again, with this review the Agency received all “Mets” and “Met with Conditions” on the accreditation indicators and also choose to be reviewed in the Quality Improvement Supplement category; an optional review. The Agency programs that were reviewed include; food service, general communicable disease control, hearing, vision, immunization, onsite wastewater, HIV/AIDS & STD. We were pleased to receive Accreditation with Commendation.

The Environmental Health (EH) section of Your Local Health Department acquired a contract with a software vendor for a comprehensive EH software product called HealthSpace. The product will be customized for Branch-Hillsdale-St. Joseph and will fully integrate the drinking water and onsite wastewater programs, along with the food program, into an electronic record management system, which is new to EH.

A newly emerging contaminant in drinking water call PFAS caused the state to undergo a comprehensive water testing plan for Community Water Supplies, Non-community Water Supplies, schools and daycares. The Environmental Health section maintained oversight of test results and communicated with water supply operators and the public about what was known about the health effects of PFAS. No supplies were found to exceed the health advisory level.

The Agency went through a request for proposals process to acquire an Electronic Medical Record (EMR). The EMR product that we contracted to obtain, “Nightingale Notes” from Champ Software, was developed for public health and used widely by local public health agencies in other Midwestern states. This software will allow Your Local Health Department to streamline billing processes and collect data on our clients on their health needs which will allow us to target limited public health funding to do the most good.

Your Local Health Department trains individuals in CPR and AED. Southern Michigan Bank & Trust found the training so valuable that they gifted the Health Agency with 14 adult manikins, 1 child manikin, and 2 infant manikins to replace aging and older-technology manikins used in the courses.

Your Local Health Department and the Area Agency on Aging III C (AAA) celebrated 22 years of collaboration in FY18. AAA’s Community Living Program continues to meet the complex needs of seniors by lining up comprehensive support systems. Many of the seniors AAA helps find themselves victims, so when the opportunity to apply for grant funds through the Victim of Crime Act (VOCA) presented, AAA made application and was successful in receiving the funding.

The Agency’s marketing team implemented an updated logo for Your Local Health Department.

The team at Your Local Health Department will continue to support you and your family.

Yours in Good Health,



Rebecca A. Burns, MPH, RS



---

## **Our vision...**

***We envision positively impacting the health of individuals, families, communities and the environment through responsiveness, competence and collaboration.***

---

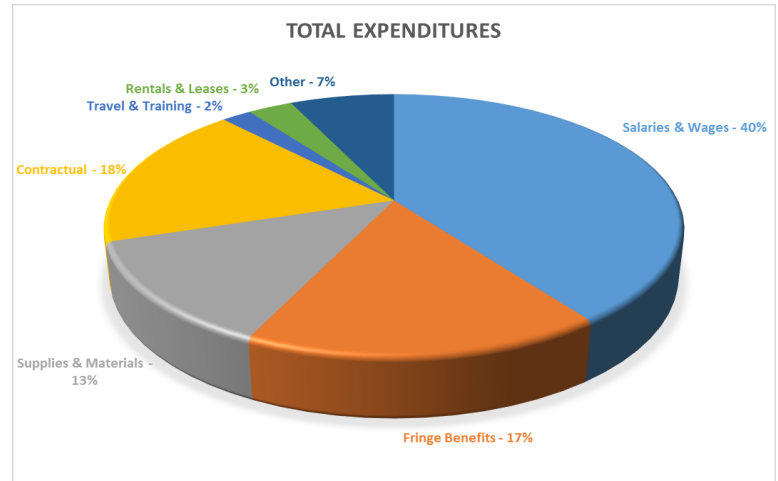
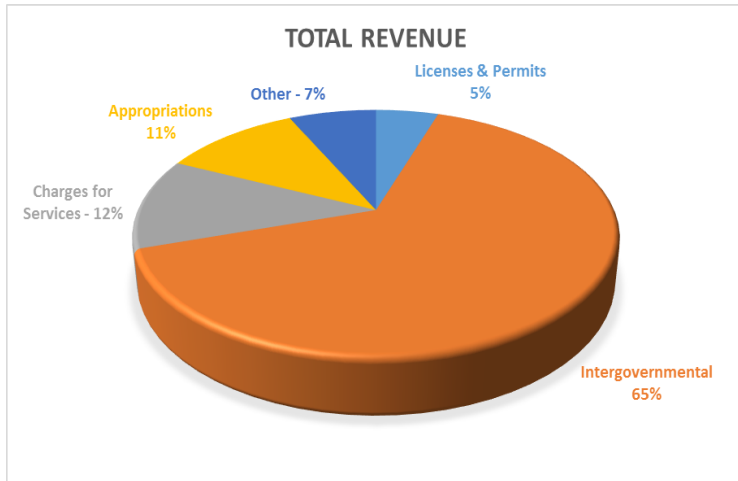
---

## **Our mission...**

***We promote optimal health to prolong life, by preventing disease and assuring protection of the public’s health in our community and environment.***

---

# Finance



**Fiscal Year 2017/2018**

**Total Annual Budget Based on Actuals:  
\$6,041,245**

## Public Health Dental Services



Age	Coldwater	Hillsdale	Three Rivers	Sturgis	Total
0-4	3.1%	3.3%	6.3%	7%	4.9%
5-14	9.4%	13.1%	21.7%	20.4%	16.3%
15-20	6.4%	6.1%	10%	8%	7.7%
21-60	65.3%	64.7%	51%	53.8%	58.6%
60+	15.9%	12.8%	11%	10.8%	12.5%

	Coldwater	Hillsdale	Three Rivers	Sturgis	Total
<b>Number of Patient Visits</b>	6,087	7,234	6,880	5,816	26,017
<b>Service Mix:</b>					
Medicaid	30%	45.5%	23.7%	20.8%	30.7%
Healthy Michigan Plan	27.8%	23.5%	24.3%	21.2%	24.2%
Traditional Insurance	23.4%	12.7%	17%	24.4%	19%
Delta Healthy Kids	8.5%	13.5%	24.9%	20.6%	16.9%
Uninsured	10%	4.8%	10.1%	13%	9.2%

*"I have never been to a medical facility where I have felt more comfortable. I started my first visit in tears, thinking dentures were my only option. I just left my 3rd cleaning appointment with a much more beautiful smile. My hygienist has been more than amazing. She makes sure I am informed and comfortable. It's like chatting with a friend. I have and will continue to recommend MCDC to everyone." - Amanda (Three Rivers)*

*"Not only are they caring and personable, but they truly have your best interest at heart. I would definitely recommend them to anybody who is looking for a dentist and staff that exceeds all expectations." - Mark (Sturgis)*

# County Health Profile

Profile - 2017	Branch County	Hillsdale County	St. Joseph County	Michigan
Population	43,410	45,879	60,947	9,962,311
Marriage	304	308	437	58,105
Divorce	140	216	247	28,136
% of Population 65+ years	17.8%	19.1%	17.6%	16.7%

Leading Causes of Death (2017) (Age Adjusted Rates per 100,000)	Branch County	Hillsdale County	St. Joseph County	Michigan
Heart Disease	183.8	215.4	195.0	195.9
Cancer	179.9	193.9	173.7	161.1
Chronic Lower Respiratory Disease	64.9	50.4	63.1	44.3
Unintentional Injuries	**	42.7	51.5	53.9
Stroke	**	**	41.5	39.2
Alzheimer's Disease	51.0	34.4	42.7	34.5
Diabetes Mellitus	**	**	29.8	22.1
Kidney Disease	**	**	24.0	14.7
Pneumonia & Influenza	**	**	**	14.1
Intentional Self-Harm - Suicide	**	**	**	13.6

Maternal/Infant Health Indicators (2017)	Branch County	Hillsdale County	St. Joseph County	Michigan
Live Births	530	534	747	113,507
Number of Teen Births (age 15-19)	32	34	55	5,307
Teen Pregnancy Rate (per 1,000 births)	31.4	28.9	37.5	27.3
% Low Birth Weight	6.4%	5.8%	8.8%	8.8%
% Very Low Birth Weight	1.5%	1.9%	1.6%	1.5%
% Adequate Prenatal Care - Kessner Index (2014-16)	50.3%	48.1%	56.0%	67.8%
Infant Mortality Rate (per 1,000) (3 year average - 2015-17)	8.8	11.2	4.8	6.7

Economic Indicators (2017)	Branch County	Hillsdale County	St. Joseph County	Michigan
% Unemployment	4.9%	5.1%	4.3%	5.4%
Median Household Income	\$47,100	\$46,800	\$46,700	\$51,100
% Children Eligible for Free & Reduced Lunch (185% of Poverty)	52.0%	53.0%	58.0%	47.0%

\*\* Rate does not meet standards of precision or reliability.

# Environmental Health



Above, Cody Johnson uses a soil auger to obtain a soil sample. This sample will be tested to gauge the suitability of the land for an on-site sewage system.

**Interactions with the environment affect quality of life, years of healthy life lived, and health disparities. The World Health Organization (WHO) defines environment, as it relates to health, as “all the physical, chemical, and biological factors external to a person, and all the related behaviors.” Environmental health consists of preventing or controlling disease, injury, and disability related to the interactions between people and their environment.**

## Private and Public Water Supply

These programs are designed to assure both the proper installation of residential water wells and the monitoring and regulating of Type II Public Water Supplies to assure safe usable groundwater.

	2017	2018
Well Construction Permits Issued	539	553
Well Permits Inspected	351	425
New Water Supplies Approved	302	339
Non-Community Water Supply Inspections	48	34
<b>TOTAL</b>	<b>1,240</b>	<b>1,351</b>

## On-Site Sewage

Reviews sites proposed for sewage disposal, issuance and/or denial of permits, sewage evaluation, inspection, investigation and enforcement.

	2017	2018
Well/Septic Evaluations	31	30
Construction Permits	442	420
Septic Systems Inspected	352	348
Vacant Land Evaluations	32	43
<b>TOTAL</b>	<b>857</b>	<b>841</b>

## Other Programs

Although the well, septic, and food programs require the biggest portion of the environmental health staff focus, we do have responsibilities in other programs.

	2017	2018
Medical Waste Inspections	50	50
Swimming Pool Inspections	58	54
Campground Inspections	67	65
Body Art Facility Inspections	9	8
DHHS Inspections (daycare, foster care, etc.)	105	122
Septic Hauler Inspections	49	41
<b>TOTAL</b>	<b>338</b>	<b>340</b>

## Food Protection

This program provides a systematic approach to minimize the risk of food-borne illness and to ensure that food meets consumer's expectations through application of statewide standards for all establishments where food is prepared and/or served to the public.

	2017	2018
Establishment Inspections	957	904
Plans Reviewed	19	19
Temporary Food Establishment Inspections	214	209
Food Manager Certification Classes (number of attendees)	129	212
<b>TOTAL</b>	<b>1,319</b>	<b>1,344</b>

**Ensuring a safe and healthy environment for Branch, Hillsdale, and St. Joseph residents and visitors is the Environmental Health department's primary objective.**



Above, Joe Frazier and Carrie Southern teach a food safety course in Branch County.

Inspection and licensing programs ensure food service establishments maintain sanitary conditions and follow safe food handling practices. Food service establishments (temporary and permanent) are required by law to be licensed. Food and/or waterborne illness investigations are also conducted. Each year those establishments that meet the criteria below are recognized with a Certificate of Excellence. In 2018, the Branch-Hillsdale-St. Joseph Community Health Agency's Sanitarians issued 104 certificates: 34 in Branch County, 21 in Hillsdale County, and 49 in St. Joseph County.

### Definitions:

**Evaluation** means an inspection.

**Priority and Priority Foundation Item** means a provision of the FDA Food Code that, if in non-compliance, is more likely than other violations to contribute to food contamination, illness, or environmental health hazard.

**Core Item** means a provision of the Code that is not designated as a Priority Item or a Priority Foundation Item. This violation usually relates to general sanitation, operational controls, sanitation standard operating procedures, facilities or structures, or general maintenance.

### Criteria:

- The facility must have no Priority or Priority Foundation items cited for the evaluation conducted (all types).
- The facility must have no more than 3 Core items cited per evaluation.
- The facility must currently employ a certified food safety manager (required by law since June 30, 2009).
- The facility must have been in compliance with the smoke-free law (required by law since May 1, 2010).
- The facility must be at a fixed location, which operates a minimum of 12 days per month performing food preparation at the facility.
- The facility must not have been implicated in a foodborne illness outbreak.
- The facility must not have had any investigated complaints *confirmed*.
- The facility has had no enforcement action taken against them by the agency.

# Personal Health & Disease Prevention

## Women, Infants & Children (WIC)

A nutrition and educational program directed toward increasing healthy outcomes for pregnant, post-partum and breast-feeding women, infants and children up to 5 years of age.

	2017	2018
Average Monthly Participation	4,528	4,223

## WIC Peer Breastfeeding Support Program

A peer counseling program for WIC participants that provides mother-to-mother support to encourage breastfeeding.

	2017	2018
Breastfeeding Initiation Rates	82%	80%
Peer Counselor Contacts Made With WIC Clients	1,845	1,838

We are dedicated to providing essential services to our community that are helpful and effective. It is our goal to:

- Reduce transmission of communicable disease
- Improve health for women of childbearing age, pregnant women and children
- Improve access to health care
- Reduce preventable illnesses, injuries, and deaths in children
- Provide protection against vaccine-preventable diseases through the administration of vaccines and the assurance of effective immunization coverage



Above, clinic staff Cammie Smith (left) and Yvonne Atwood (right) are entertaining families at the 1st Annual Special Saturday Summer Fun clinic in Hillsdale County. There were Project FRESH vendors on site, face painting, immunizations, and nutrition education appointments available.

## Immunizations

Services that provide immunizations for vaccine-preventable disease for children and adults. Includes collaboration and assistance with health providers in the Vaccine For Children (VFC) Program and use the Michigan Care Improvement Registry (MCIR).

	2017	2018
Children Vaccinated	7,009	5,159
Adults Vaccinated	3,743	4,196
Travel Vaccines Given	266	297
TOTAL	11,018	9,652

## Communicable Disease Prevention & Control

Provides Public Health Code compliance regarding prevention, investigation, and control of defined communicable diseases, including tuberculosis, sexually transmitted diseases (STDs), HIV, animal bites and many other infectious diseases.

	2017	2018
Infectious Diseases Reported	27,831	24,987
STD Investigations	503	556
HIV Testing & Contact Follow Up	93	71
TOTAL	28,158	25,283





"CSHCS was a great support to help navigate through tough decisions on equipment (stand-up bath seat and oxygen) and a wheelchair ramp. They helped with out-of-pocket cost, medications, mileage reimbursement, transportation and in-home nursing options. We are eternally grateful for everything they did for us."

-Nicole Ewers, CSHCS Parent and Rep.  
(daughter, Leigha, pictured above)

## Children's Special Health Care Services (CSHCS)

CSHCS strives to enable individuals with special health care needs to have improved health outcomes and an enhanced quality of life through the appropriate use of the CSHCS system of care. Our goals are to:

- Assist individuals with special health care needs in accessing the broadest possible range of appropriate medical care, health education and supports.
- Assure delivery of these services and supports in an accessible, family centered, culturally competent, community based and coordinated manner.
- Promote and incorporate parent/professional collaboration in all aspects of the program.
- Remove barriers that prevent individuals with special health care needs from achieving these goals.

### Children's Special Health Care Services

This county-based program helps pay for specialized medical treatment for children and some adults with chronic and severe medical conditions.

	2017	2018
Individuals Enrolled	799	795
Assessments	911	966
Referrals for Medical Care	29	10
<b>TOTAL</b>	<b>1,739</b>	<b>1,763</b>

### School Age Hearing and Vision Screenings

Provides periodic hearing and vision screening to children from age three through high school.

	2017	2018
Hearing Screenings Performed	7,562	7,274
Vision Screenings Performed	13,421	14,306
<b>TOTAL</b>	<b>20,983</b>	<b>21,580</b>



Nicole Ewers, Representative, Madonna Hilarides, RN, Terri Penney, RN, Program Coordinator, Tina Lutz, Representative

# Area Agency on Aging (IIIC)



Laura Sutter,  
Director

Services	Totals	Units
Operations	\$97,850	N/A
Nutrition	\$662,586	160,705
In-Home	\$315,656	30,477
Community	\$126,022	5,699
Access	\$346,690	20,336
Legal	\$10,940	274

*Population data based on self-reported numbers by participants, choosing to identify race/ethnicity is not required.*

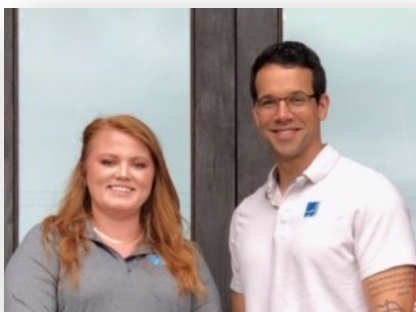
Population Served	
Total Population 18+	2,658
White (non-Hispanic)	2,372
African American	43
Asian/Pacific Islander	6
American Indian/ Alaskan	9
Hispanic (of any race)	20
Below Poverty	422
Rural	2,604

Over the past year the Area Agency on Aging has actively developed programs and partnerships across the two-county planning & service area. Here are a few highlights:

## Elder Abuse Prevention &

**Awareness:** Our office works directly with key agencies and community partners to address elder and vulnerable adult abuse, neglect and exploitation. In the spring of 2018 we applied for a special grant through the Michigan Department of Health and Human Services, Division of Victim Services, to directly serve victims of elder or dependent adult abuse, neglect and/or exploitation. Our project proposal shared current activities and outreach efforts happening in both St. Joseph and Branch counties, as well as reflected statistics including the sharp rise in vulnerable adult referrals our office had been experiencing. We were notified

of our successful application in the summer and immediately began preparations to hire two new staff. If you would like more details or to become more involved in your community's efforts to prevent vulnerable adult abuse, neglect or exploitation, call our office!



## Community Living Program

**continues to soar!** Since 2005 the Area Agency on Aging has served older adults with complex needs through the Community Living Program. In 2018 we served over 120 individuals, many of whom have other agencies involved and are significantly at risk of needing institutional care. Our goals remain: to offer a person centered approach, honoring preferences and strengths; to serve those greatest in need; and, allow participants to age in place. If you would like more information about the Community Living Program or other supports available in your community, please contact our office!



Top: Elder Abuse Victim Specialists Abigail Reardon (St. Joseph County) and Joshua Englehart (Branch County)

Bottom (from left to right): Deanna Himebaugh, Sarah Watson, Megan Bentley, Laura Sutter, Jennifer McDonald, Melissa Cramton



Area  
Agency on  
Aging (IIIC)  
Branch-St. Joseph

# Health Education & Promotion

## Health Education

The Health Education and Promotion Division of the Branch-Hillsdale-St. Joseph Community Health Agency is responsible for a broad range of services offered to schools, communities, professional groups and individuals on a variety of health topics.

	FY 2018
Community Events	34
Educational Presentations	52
Child Passenger Safety Checks	150
<b>TOTAL</b>	<b>236</b>

The Health Education and Promotion staff attend community events in all three counties to give area residents information on agency services that include WIC, Immunizations, Infant Safe Sleep, Environmental Health services, Breastfeeding, Child Passenger Safety, Tobacco Cessation, and much more.

### Did you know?

When installed and used correctly, child safety seats decrease the risk of fatal injury by 71 percent among infants, 54 percent among toddlers and 45 percent among children ages 4 – 8. This is why the Branch-Hillsdale-St. Joseph Community Health Agency partners with Safe Kids

Worldwide. Together, we are educating parents on installing their specific seats correctly and working to make sure that every child that needs a seat in the tri-county area has one that fits properly. There were 150 seats checked and installed in FY18 by the Agency's Certified Child Passenger Safety Technicians.



Our Health Educators work with youth from our area schools to promote healthy lifestyles, including healthy relationships, drug and alcohol prevention, tobacco cessation, safe driving habits, anti-bullying, etc.



Above, students from Coldwater High School's Youth Engaged in Prevention Club (YEP) learn about the dangers and effects of drugs and alcohol. They take that knowledge and spread the word to other students in an effort to prevent drug use and underage drinking.



**Branch County Office**  
570 N. Marshall Rd.  
Coldwater, MI 49036  
(517) 279-9561

**Hillsdale County Office**  
20 Care Dr.  
Hillsdale, MI 49242  
(517) 437-7395

**St. Joseph County Office**  
1110 Hill St.  
Three Rivers, MI 49093  
(269) 273-2161

**St. Joseph County Off-Site Clinic**  
**Medical Commons II**  
1555 E. Chicago Rd.  
Suite C  
Sturgis, MI 49091  
Open Wednesday & Thursday  
(269) 273-2161