

Branch-Hillsdale-St. Joseph Community Health Agency



“Your Local Health Department”

Our Mission:

*We promote optimal health to prolong life by preventing disease
and assuring the protection of the public’s health
in our community and environment.*

www.bhsj.org

*Our Vision:
We envision
positively impacting
the health
of individuals,
families,
communities
and the environment
through
responsiveness,
competence
and collaboration.*

Our Vision

Letter to the Community

FY 2013/14 saw changes and opportunities for the Branch-Hillsdale-St. Joseph Community Health Agency. “Collaboration” was the theme for the fiscal year, and through innovative partnerships, the Health Agency was able to develop and implement essential public health programming, as described below:

- Our Health Agency joined Branch Community Health Center, Branch County Intermediate School District, and Bronson, Coldwater and Quincy Community Schools in establishing three adolescent tele-health clinics. These clinics, staffed by registered nurses that are employed by Branch County CHC, connect via the Internet with the local Pediatric practice. This program, the 2014 recipient of the Michigan Department of Community Health’s (MDCH) Director’s and Hometown Hero Awards, re-establishes school nursing in all three Branch County Public School Districts.
- Our Health Agency, working with local county governments, moved to fiber optics as the conduit for its internet connectivity. One of the many advantages of moving to a fiber optic network is that it has allowed the Health Agency to purchase a voice-over-internet phone system. The new phone system streamlines communication between county offices. In addition to improving its operation efficiencies, it has resulted in a cost savings of \$35,000 per year.
- Our Health Agency, in partnership with its local hospitals, community mental health authorities and other health and human service providers, worked diligently to complete a Community Health Needs Assessment in each of its three counties. These assessments identified the following concerns: Access to Care, Substance Abuse, Maternal and Child Health, Chronic Diseases and Risk Behaviors. Community Health Improvement Plans that emphasize collaboration have been developed and are being implemented, with the goal of improving the health of county residents.
- Our Health Agency joined Michigan Department of Agriculture and Rural Development and four other local health departments in the implementation of the Michigan Foodborne Illness Investigation/Food Emergency Response Capacity Development Grant. This program uses a cross-disciplinary approach for conducting disease surveillance and investigation, and develops a multi-jurisdictional infrastructure for communication, training and technical assistance capacities.
- Our Health Agency welcomed the following additions: H. Lauren Vogel, D.O., Medical Director; Steven Rutz, M.S.A., Director of Finance; and Kim Wilhelm, B.S.N., Director of Prevention Services. The skills and expertise of these well-trained and seasoned professionals will add to the strengths of the Health Agency in meeting the growing public health needs of its communities.

Collaboration is key to successful community health improvement. The Institute of Medicine suggests that the community, health care delivery system, employers and businesses, media, academia, and governmental public health infrastructure *all* play an important role in improving the health of people. The Branch-Hillsdale-St. Joseph Community Health Agency, with its partners, will continue to work together to make health improvement real and attainable for the tri-county area.

Sincerely,



Stephen R. Todd, MPA, RS
Health Officer/Administrator

- ROBIN BAKER** St. Joseph County
- BRAD BENZING** Hillsdale County
- DALE SWIFT, Vice-Chair** Branch County
- RODNEY OLNEY** Branch County
- MARK WILEY** Hillsdale County
- ALLEN BALOG, Chair** St. Joseph County

Administrative Staff

- STEPHEN TODD, MPA, RS** Health Officer
- H. LAUREN VOGEL, DO** Medical Director
- REBECCA BURNS, MPH, RS** Environmental Health Director
- KIMBERLY WILHELM, BSN, RN** Prevention Services Director
- THERESA CHRISTNER, MA** Health Promotions & Education Director
- STEVEN RUTZ, MSA** Chief Financial Officer
- MAUREEN PETZKO, BA** Director of Operations

Branch-Hillsdale-St. Joseph Community Health Agency

County Health Profiles

Profile (2013)

	Branch County	Hillsdale County	St. Joseph County	Michigan
Population	43,649	46,101	60,964	9,895,622
Marriage	283	331	450	55,396
Divorce	158	248	267	31,687
% of Population 65+ Years	16.2%	17.2%	16.1%	15.0%

Leading Causes of Death — Age Adjusted Rates per 100,000 (2011 - 2013)

	Branch County	Hillsdale County	St. Joseph County	Michigan
Heart Disease	211.1	207.2	232.2	199.7
Cancer	171.7	183.8	176.3	174.2
Chronic Lower Respiratory Diseases	77.4	68.5	60.4	46.0
Stroke	52.9	39.4	46.3	37.4
Unintentional Injuries	33.3	41.0	40.7	37.9
Diabetes Mellitus	36.2	14.3	34.9	23.6
Alzheimer's Disease	**	**	**	25.6
Kidney	**	**	**	13.9
Pneumonia & Influenza	14.5	19.3	16.5	14.7
Suicide	**	**	**	12.5

Maternal/Infant Health Indicators (2013)

	Branch County	Hillsdale County	St. Joseph County	Michigan
Total Births	567	580	860	113,732
Number of Teen Births (15-19)	57	54	91	7,870
Teen Pregnancy Rate (per 1,000 births)	57.5	43.4	65.2	38.2
% Low Birth Weight	6.9%	9.7%	8.4%	8.3%
% Very Low Birth Weight	1.6%	1.2%	1.5%	1.6%
% Inadequate Prenatal Care—Kessner Index	12.2%	8.6%	10.7%	9.5%
Infant Mortality Rates per 1,000 (2011-13*)	7.0	4.3	7.3	6.8

Economic Indicators (2013)

	Branch County	Hillsdale County	St. Joseph County	Michigan
% Unemployment (Annual Rate - Not Seasonally Adjusted)	8.5%	9.1%	7.8%	8.9%
Median Household Income (2013)	\$43,947	\$40,363	\$43,891	\$48,200
% Children Receiving Free & Reduced-Lunch (185% of Poverty and Below)	57.8%	55.7%	58.9%	48.6%

***Rate does not meet standards of precision or reliability*

Public Health is... Prevention, Protection, Promotion...

ENVIRONMENTAL HEALTH

*On-Site Sewage

Reviews sites proposed for sewage disposal, issuance and/or denial of permits, sewage disposal evaluation, inspection, investigation and enforcement.

	2013	2014
Well/Septic Evaluations	27	22
Construction Permits	394	421
Septic Systems Inspected	323	274
Vacant Land Evaluations	21	20

*Private and Public Water Supply

These programs are designed to assure both the proper installation of residential water wells and the monitoring and regulating of Type II water supplies to assure safe useable groundwater.

	2013	2014
Well Construction Permits Issued	485	478
Well Permits Inspected	447	448
New Water Supplies Approved	340	260
Non-community Water Supply	55	100

*Food Protection

This program provides a systematic approach to minimize the risk of food-borne illness and to ensure that food meets consumer expectations through application of statewide standards for all establishments where food is prepared and/or served to the public.

	2013	2014
Establishment Inspections	967	970
Plans Reviewed	16	18
Vending Inspections	89	90
Temporary Establishment Inspections	282	225

HEALTH PROMOTION

Health Education

Educational presentations include: Contraception, Sexually Transmitted Diseases, HIV/AIDS, Nutrition Education and other general health information.

	2013	2014
Community Events	42	53
Educational Presentations	41	35

Safe Kids Coalition

Safe Kids Worldwide is the first and only global organization dedicated solely to the prevention of accidental childhood injury - the number one killer of children ages 14 and under.

	2013	2014
Safe Kids Events	26	27
Bicycle Helmets Distributed	175	11
Car Seats Checked	635	544

Tobacco Reduction Action Coalition (TRAC)

TRAC seeks to improve the health of the people of Branch, Hillsdale and St. Joseph Counties by encouraging the elimination or reduction of tobacco use.

	2013	2014
Community Events/Presentations	46	26
Policy Assistance To Schools	27	24

Children's Special Health Care Services

This county-based program helps pay for specialized medical treatment for children and some adults with chronic and severe medical conditions.

	2013	2014
Individuals Enrolled	692	721
Assessments	917	958
Referrals for Medical Care	20	25

*School Age Hearing and Vision Screenings

Provides periodic hearing and vision screening to children from age three through high school.

	2013	2014
Hearing Screening Performed	7,108	7,205
Vision Screenings Performed	13,255	12,602

Healthy Beginnings (Hillsdale County)

FY 2014 was the last year for the Healthy Beginnings Program. The program, a free, evidence-based, home visitation program for families with children 0-5 years old, provided parent education and child development information.

<i>Hillsdale County</i>	2013	2014
Parenting Class Participants	309	240
Home Based Services	561	236

PREVENTION SERVICES

*Communicable Disease Prevention & Control

Provides Public Health Code compliance regarding prevention, investigation, and control of defined communicable diseases, including tuberculosis, sexually-transmitted diseases (STDs), HIV/AIDS, animal bites and many other infectious diseases.

	2013	2014
Infectious Diseases Reported	14,116	13,291
STD Testing & Contact follow-up	284	233
HIV/AIDS Testing & Contact Follow-up	111	107

**Essential Local Public Health Services*

through Core Public Health Services

*Immunizations

Services that provide immunizations for vaccine-preventable diseases for children and adults. Includes collaboration and assistance with health providers in the Vaccine for Children Program and use of the Michigan Care Improvement Registry.

	<u>2013</u>	<u>2014</u>
Children Vaccinated	7,521	7,026
Adults Vaccinated	4,184	4,186
Travel Vaccines Given	250	204
Total Vaccines Given	12,192	11,416

Women, Infants & Children (WIC)

A nutrition and educational program directed toward increasing healthy outcomes for pregnant and breast-feeding woman, infants and children up to 5 years of age.

	<u>2013</u>	<u>2014</u>
Average Monthly Participation	5,475	5,273

WIC Peer Breastfeeding Support Program

A peer counselor program for WIC participants that provides mother-to-mother support to encourage breastfeeding.

	<u>2013</u>	<u>2014</u>
Breastfeeding Initiation Rates	85%	88%
Peer Counselor Contacts Made With WIC Clients	3,638	4,091

*Essential Local Public Health Services



Area Agency on Aging (III-C) Branch-St. Joseph

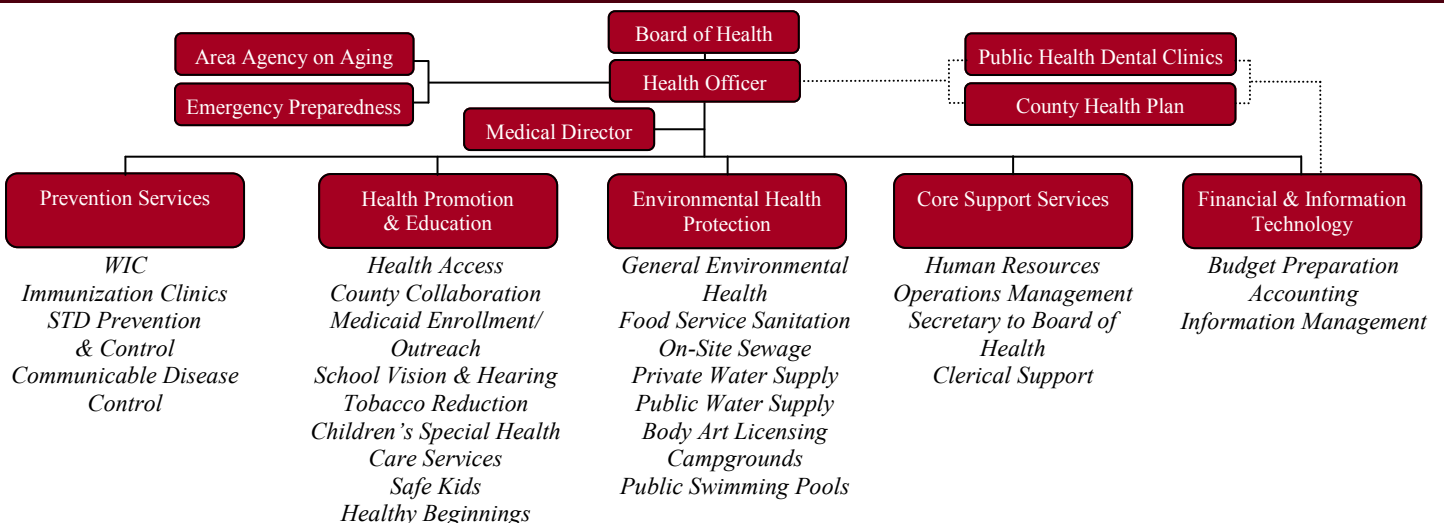
AREA AGENCY ON AGING

Over the past year, the Area Agency on Aging has actively developed programs and partnerships across the two-county planning and service area. Here are a few highlights:

- **Creating Confident Caregivers** utilizes the Savvy Caregiver Program, a university-tested program for family members caring for loved a one with memory loss or dementia at home. Our social worker care consultant and community partner, Blue Skies Adult Day Services, held four classes and shared information and skills with 28 families in order to help them more effectively manage stress and improve care.
- **Elder Abuse Prevention & Awareness** activities occurred throughout 2014 including: the “Home for the Holidays” advertising campaign and planning for local educational events. The Branch County Elder Abuse Taskforce has grown in its partnerships and includes financial, as well as law enforcement representatives. St. Joseph County worked on a timeline and best practices to include in their “Vulnerable Adult Protocol,” which will be updated to reflect recently-passed legislation.
- **Health and Wellness Program Expansion** aims to develop and expand availability for two evidence-based programs that target individuals 60 years and older. The Diabetes PATH program assists participants in learning to manage their Type 2 Diabetes. The Matter of Balance program assist participants in learning how to prevent falls. Our focus has been to: recruit class leaders, provide trainings, supports and incentives to increase enrollment.

<u>Service</u>	<u>Total</u>	<u>Units</u>
Operations	\$79,798	
Nutrition	\$442,776	195,804
In-Home	\$119,147	30,227
Community	\$88,290	14,006
Access	\$184,044	41,790
Legal	\$9,000	256
Populations Served		
Non-Minority	3,997	Native American 12
Rural	3,238	Hispanic 55
Under Poverty-level	681	Asian/Pacific 5
Minority Poverty	72	Multiracial 410
African American	88	

Organizational Chart



Office Directory

Coldwater (517) 279-9561
570 N. Marshall Road
Coldwater, MI 49036

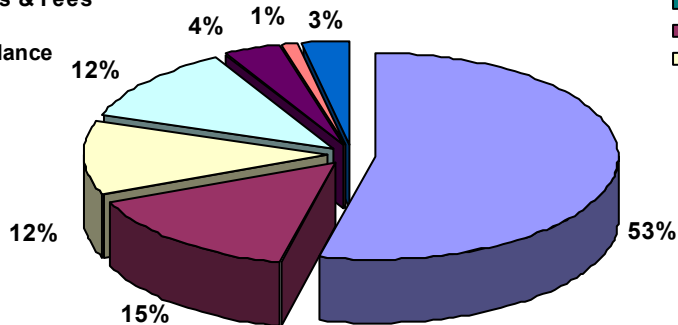
Hillsdale (517) 437-7395
20 Care Drive
Hillsdale, MI 49242

Three Rivers (269) 273-2161
1110 Hill Street
Three Rivers, MI 49093

Fiscal Year 2013/14 Total Annual Budget Based on Actuals = \$5,978,776

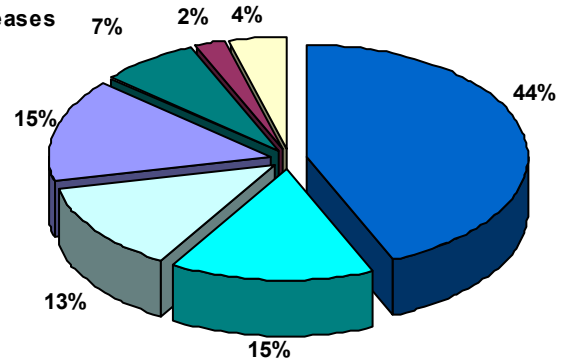
Total Revenues 2013/14

- State & Federal Grants
- State ELPHS
- County Appropriations
- Charges for Services
- Licenses & Fees
- Other
- Fund Balance



Total Expenditures 2013/14

- Salaries and Wages
- Fringe Benefits
- Supplies and Materials
- Contractual
- Rental & Leases
- Travel
- Other



What's new on the web...www.bhsj.org

[Publications & Reports](#)

Increases community awareness of health department services through press releases, brochures and the creation of special reports on selected health topics.

[Health Data and Statistics](#)

County specific data on communicable diseases, motor vehicle accidents, births, hospitalizations and more.

[Downloads](#)

All forms are Adobe Acrobat files and therefore require [Adobe Acrobat Reader](#) to view/print them.

[Current Clinic & Program Calendars](#)

Current calendars that show dates and times of clinic services.

[Communicable Disease Data](#)

Up-to-date tracking of the most common communicable diseases, including: chicken pox, flu, head lice, hepatitis and tuberculosis.

[Employment Opportunities](#)

Available job opportunities within the Branch-Hillsdale-St. Joseph Community Health Agency and other Public Health organizations in Michigan.

[Marketplace Information](#)

Provides a direct link to the government-sponsored health insurance marketplace, as well as to its related tools. Allows individuals who do not receive employer-based health insurance through their workplace to seek affordable health insurance.

[Hillsdale Human Services Network](#)

Links to the Hillsdale County Human Services Network, a state-recognized Community Collaborative.

[Healthy Michigan Plan](#)

Expands Medicaid to single adults between the ages of 18 and 64 years who have incomes up to 133% of poverty. For a single person, this means an annual income up to \$16,000. For a family of four, it means an annual income up to \$33,000.

[Dental Clinics](#)

Designed to serve Medicaid patients, including those with MICHild and Healthy Kids Dental. Also for patients that are uninsured and who financially qualify for the Michigan Community Dental Plan. Clients who are on WIC or Food Stamps automatically are qualified.