

The County Health Rankings Project Branch County, Michigan

A Product of the Robert Wood Johnson
Foundation

&

The University of Wisconsin Population
Health Institute



What are the County Health Rankings?

- ◆ The *Rankings* are based on a model of population health that emphasizes the many factors that, if improved, can help make communities healthier places to live.



Sources of Data

(Alphabet Soup)

- ✦ Centers for Disease Control and Prevention (CDC):
- ✦ Behavioral Risk Factor Surveillance System (BRFSS)
- ✦ National Center for Health Statistics (NCHS)
- ✦ National Center for Chronic Disease Prevention and Health Promotion (Division of Diabetes Translation)
- ✦ National Center for Hepatitis, HIV, STD, and TB Prevention
- ✦ Environmental Protection Agency (EPA)
- ✦ Health Resources and Services Administration (HRSA)
- ✦ Decennial Census
- ✦ American Community Survey (ACS)
- ✦ Census/Current Population Survey: Small Area Health Insurance Estimates and Income and Poverty Estimates, and Census County and Zip Code Business Patterns
- ✦ Federal Bureau of Investigation (FBI)
- ✦ Medicare claims/The Dartmouth Institute
- ✦ National Center for Education Statistics (NCES)
- ✦ Bureau of Labor Statistics (BLS)

What Process was used to select the measures used in the Rankings

- ✦ Review of the literature around the impact of various health factors
- ✦ Ability for factors to be modified
- ✦ Availability and reliability of measures at the county level
- ✦ Analysis and feedback by a panel of technical experts.


Ranking Methods

- ◆ The County Health Rankings include 2 primary categories
 - ◆ Health outcomes (2)
 - ◆ Health factors (4)



Health Outcomes

Health outcomes represent how healthy a county is. This report measure two types of health outcomes:

- 
- ✦ Mortality - how long people live
 - ✦ Morbidity - how healthy people feel while alive

Health Outcome Categories - Mortality

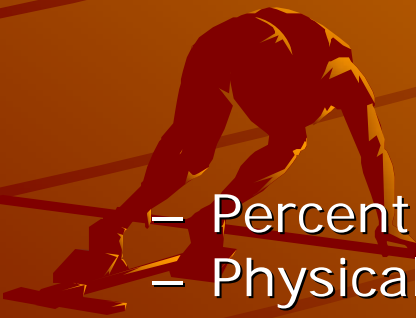
- ✦ Mortality – Measurement Tool- Years of Potential Life Lost (YPLL)
- ✦ Premature death is represented by the years of potential life lost before age 75. Every death occurring before the age of 75 contributes to the total number of years of potential life lost. For example, a person dying at age 25 contributes 50 years of life lost, whereas a person who dies at age 65 contributes 10 years of life lost to a county.
- ✦ Age-adjusting adjusts for variations in population against a standard (US Census)

Health Outcomes - Morbidity

- ✦ Morbidity- refers to how healthy people feel while alive. Specifically the measures of health-related quality of life (overall health, physical health, mental health) and birth outcomes (babies born with a low birth weight). This information is obtained mostly through surveys.

Measurement Tools

- Percent reporting poor or fair health (BRFS)
- Physically unhealthy days (BRFS) / Month
- Mentally unhealthy days (BRFS) / Month
- Low birth weight live births (Birth files)



Health Factors

Health factors represent what influences the health of a county. The Report measure four types of health factors:

- ◆ Health behaviors
- ◆ Clinical care
- ◆ Social and economic
- ◆ Physical environment



Factor # 1 - Health Behaviors

Focus Area

Measures

Smoking

Adult smoking rate

Diet & Exercise

Adult obesity rate

Alcohol use

Binge drinking

MV crashes w alcohol

Unsafe Sex

Chlamydia rate

Teen Birth rate

Data sources: BRFSS, MV Reports, NCHS, ACS

Factor # 2 - Clinical Care

Focus Area

Measure

Access to care

Adult uninsured
Primary Care Providers

Quality of Care

Hospice use
Diabetic screening
Ambulatory Hospitalization
(infections, diabetes, asthma)

Data Sources: BRFS, NCCDP, HRSA, NCHS




Factor # 3 - Social and Economic

Sources: NCES, BLS, ACS, Census

Focus area

Measures



◆ Education	Grad. Rate/College Degrees
◆ Employment	Unemployment rate
◆ Income	Children in poverty; income inequality
◆ Inadequate Social Supports	Social emotional support;
◆ Single parent HH	Percent from ACS
◆ Safety	Violent crime rates

Factor # 4 - Physical Environment

Focus Areas

✦ Environmental Quality

✦ Built Environment

Measurement Tools

Ozone pollution days
Air pollution particulate matter days

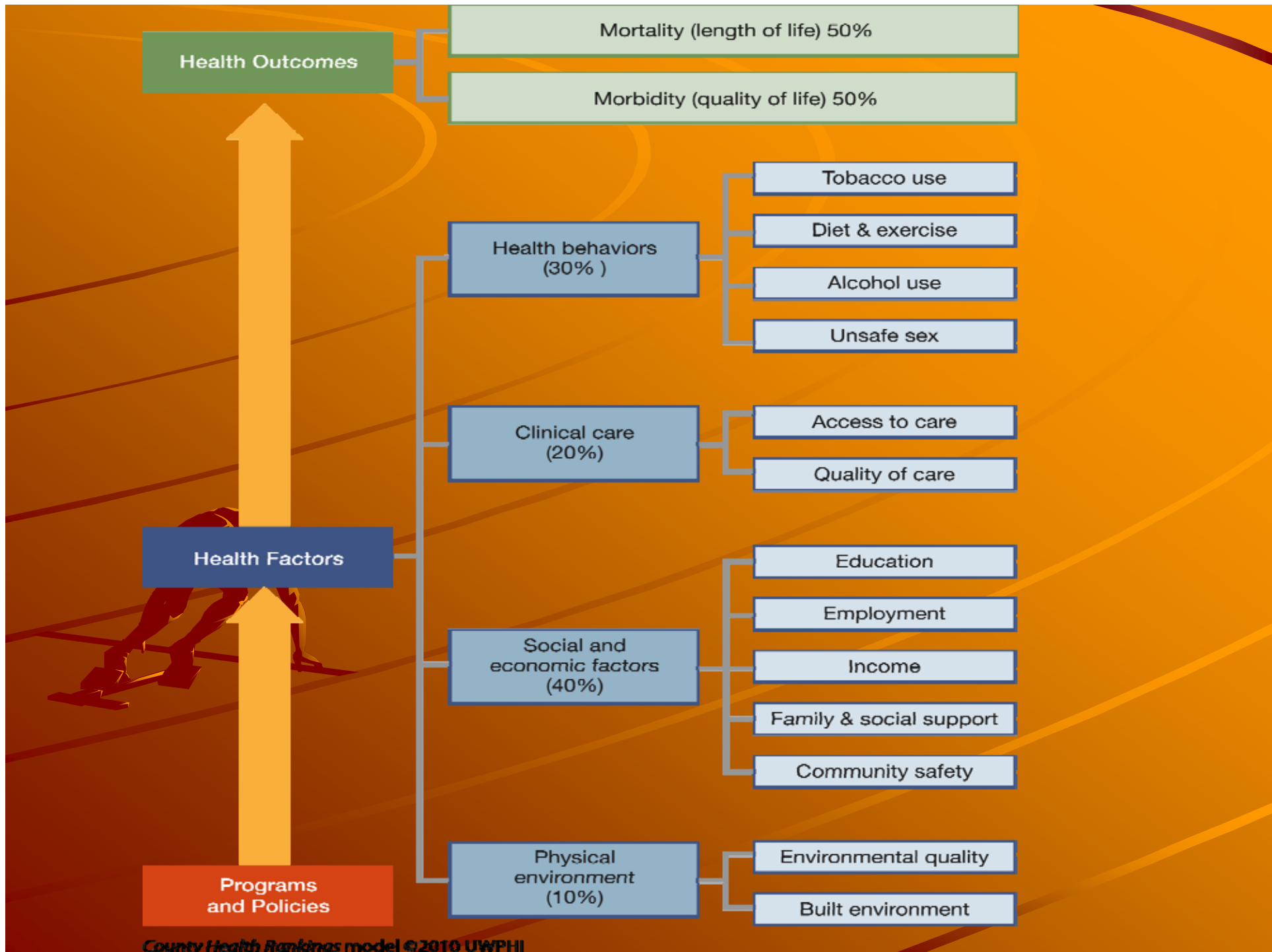
Access to healthy foods
Liquor Store Density

Sources: EPA, CDC, US Census

Computing your 'Score'

- ✦ The Rankings are based on summary scores of individual measures.
- ✦ Ranking is based on 82 Counties (Keweenaw not included; pop. 2200)





Summary of Scores

Combined

◆ Health Outcomes

47

– Mortality 49/82

– Morbidity 49/82

◆ Health Factors

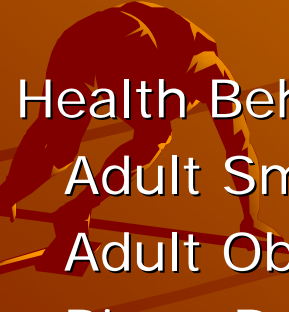
60

– Behaviors 49/82

– Clinical Care 79/82

– Social/Econ. 39/82

– Physical Env. 69/82



	Branch County	MI	Rank
Mortality	7363	7390	49
Morbidity			42
Poor/fair health	16%	14%	
Poor physical health	5 days	3.6	
Poor mental health	3.4 days	3.7	
Low Birth weight	6%	8%	
Health Behaviors			49
Adult Smoke	24%	23%	
Adult Obesity	30%	28%	
Binge Drink	16%	18%	
MV Crash Death Rate	17	13	
Chlamydia Rate	129	370	
Teen Birth Rate	53	36	

Branch County

	County	MI	Rank
Social & Economic			39
HS Graduation	79%	72%	
College Degrees	14%	24%	
Unemployment	9%	8%	
Kids in Poverty	20%	19%	
Income Inequality	42	45	
Inadequate Social Support	16%	19%	
Single parent HH	9%	10%	
Violent Crime rate	251	550	
Physical Environment			69
Air Pollution Days	6	3	
Ozone Days	4	4	
Access to Healthy Foods	33%	51%	
Liquor Store Density	1.1	1.1	

Branch County

	County	MI	Rank
Clinical Care			79
Uninsured Adult	12%	12%	
Primary Care Providers	54	113	
Prevent/Hospitalizations	92	76	
Diabetic Screening	78%	82%	
Hospice Use	17%	38%	



Final Rankings

- ✦ Ranked in 2 summary categories
- ✦ Health Outcomes – How healthy is the County
- ✦ Health Factors – What factors are influencing the health of the County



Health Outcomes Ranking (Mortality, Morbidity) How do we stack up?

- ◆ 1. Livingston County
- ◆ 15. Lenawee
- ◆ 29. Hillsdale
- ◆ 32. Ingham
- ◆ 37. Kalamazoo
- ◆ 46. Van Buren
- ◆ 47. **Branch County**
- ◆ 63. Cass
- ◆ 65. Jackson
- ◆ 69. St. Joseph County
- ◆ 75. Calhoun
- ◆ 81. Wayne
- ◆ 82. Clare

Health Factors Ranking

1. Washtenaw
13. Kalamazoo
24. Lenawee
30. Ingham
47. Van Buren
50. Cass
53. Jackson
56. Hillsdale
58. St. Joseph County
60. **Branch County**
73. Calhoun
82. Wayne

Health Factors – A Breakdown of Components

	Health Behavior	Clinical Care	Social Economic	Physical Environ.
Branch	49	79	39	69
Hillsdale	47	58	51	64
St. Joseph	61	68	47	25
Calhoun	71	29	74	58
Jackson	59	40	46	32
Lenawee	26	24	28	62
Cass	63	73	27	53
Kalamazoo	13	19	20	63

HD – Physical Environment – 3/16 zips with Healthy Foods, SJ county 7/10

Now What?

- ◆ Improving your community's health involves a cycle of activities
- ◆ Assessing needs and resources,
- ◆ Picking priorities,
- ◆ Finding programs and policies that work
- ◆ Implementing strategies
- ◆ Evaluating efforts.

Take Action

WORK TOGETHER



Strengths/Weaknesses

- ◆ + Wide variety of indicators
- ◆ - Missing some key indicators
 - ◆ Immunization rates/parks & rec. opportunities/population density/non-violent crime
- ◆ - Some Data is old
- ◆ - Several elements are estimates
- ◆ + Starts Communities Talking



✦ Questions?

✦ Follow-up?

