

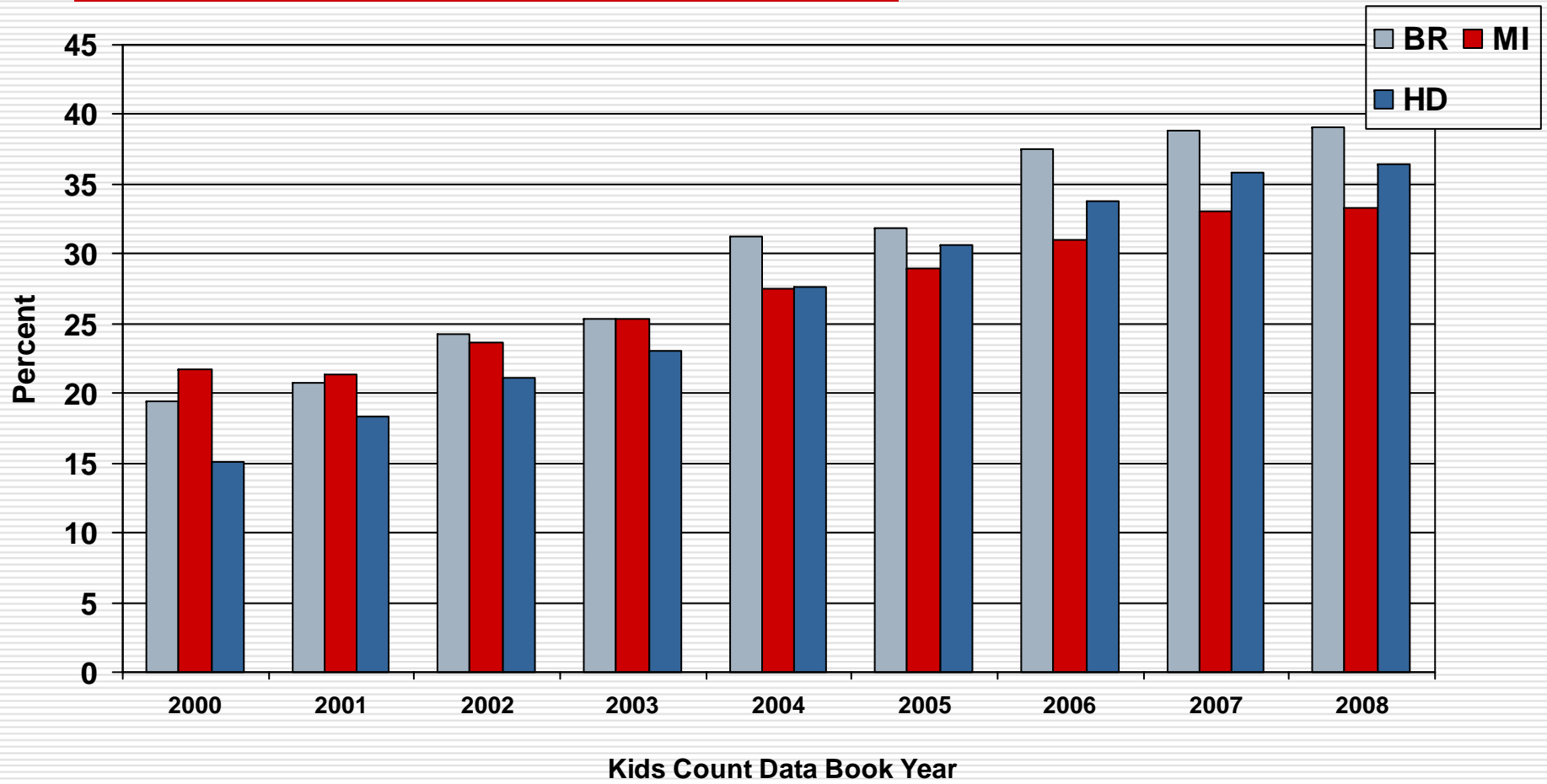
Kids Count Data 2008 Hillsdale County

Comparisons to Michigan
and Branch County

Children Insured by Medicaid

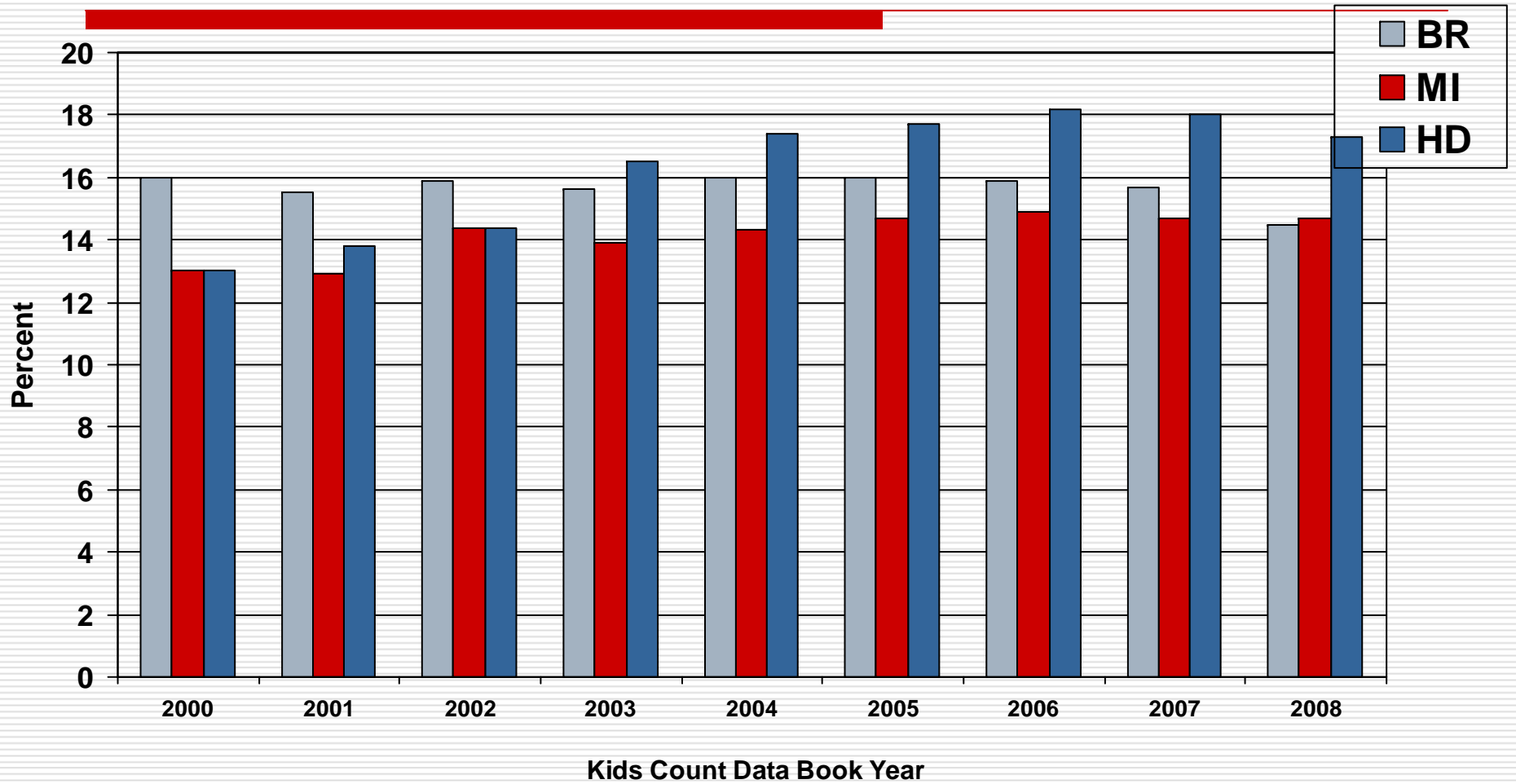
Kids < 18

Source: Kids Count Data Books



Children in Special Education(%)

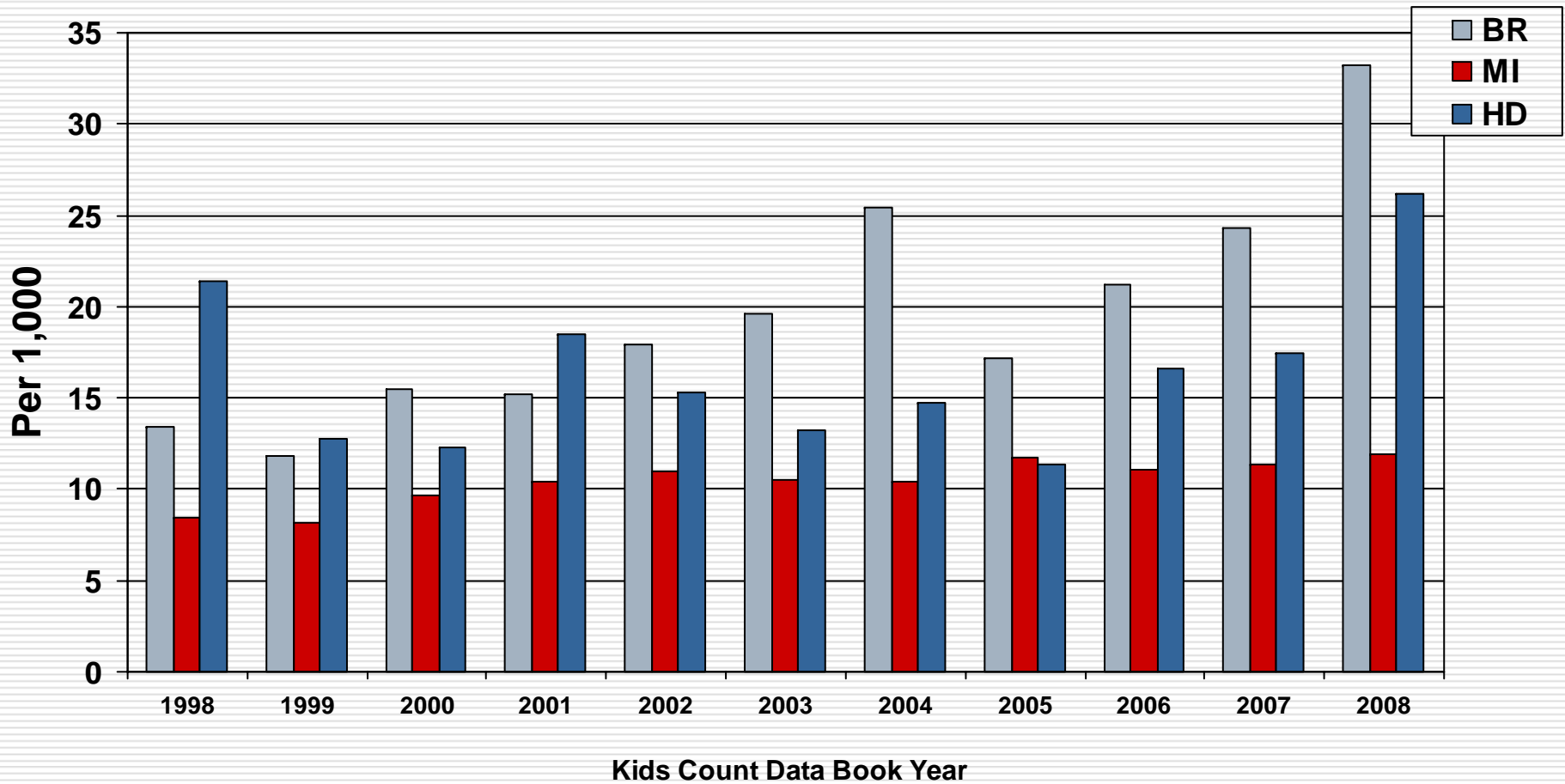
Source: Kids Count Data Books



Confirmed Victims of Abuse & Neglect

Rate per 1,000 – age specific – 0-17 (Current Rank – 73/82)

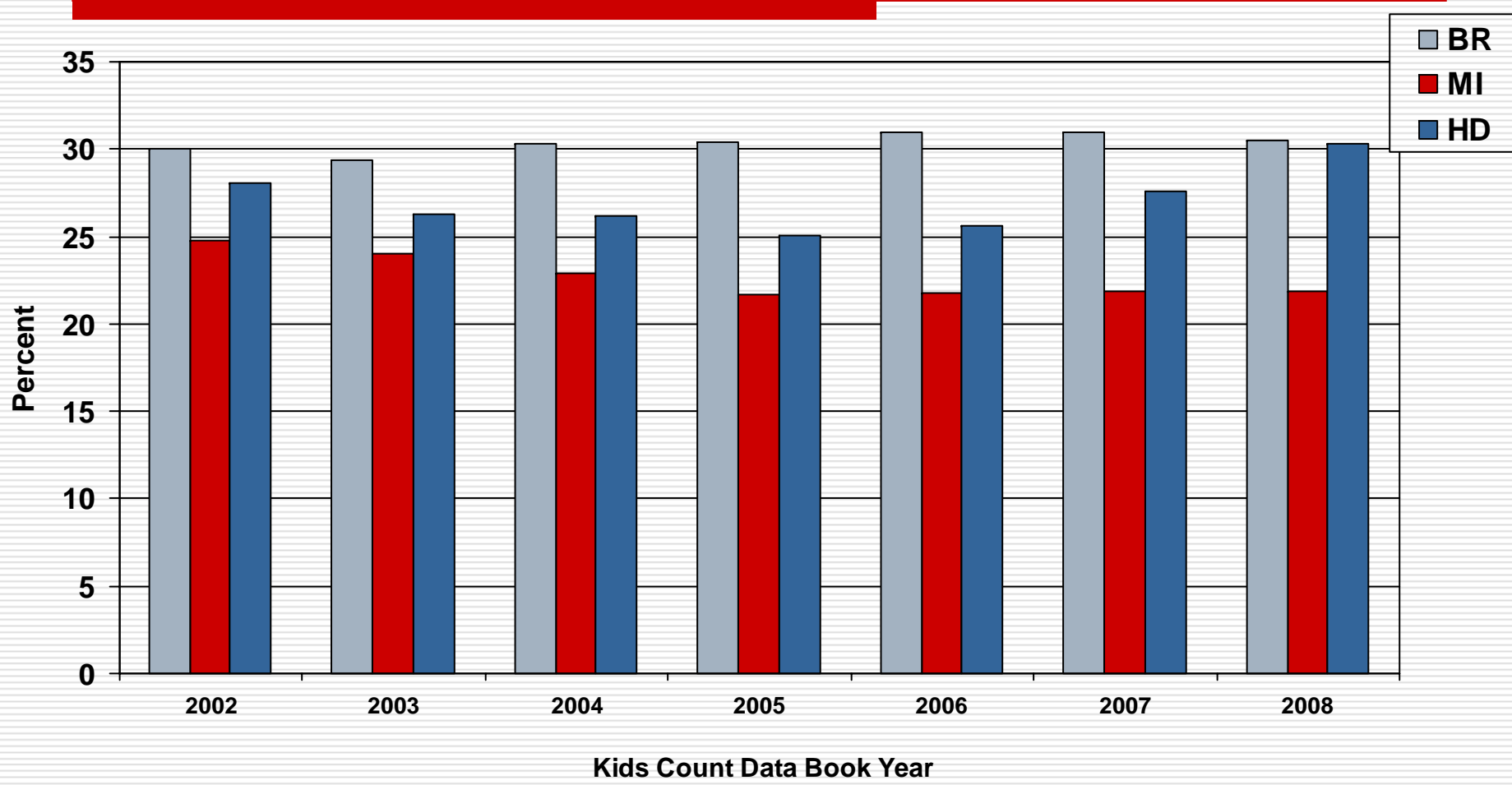
Source: Kids Count Data Books



Babies Born with < Adequate Prenatal Care

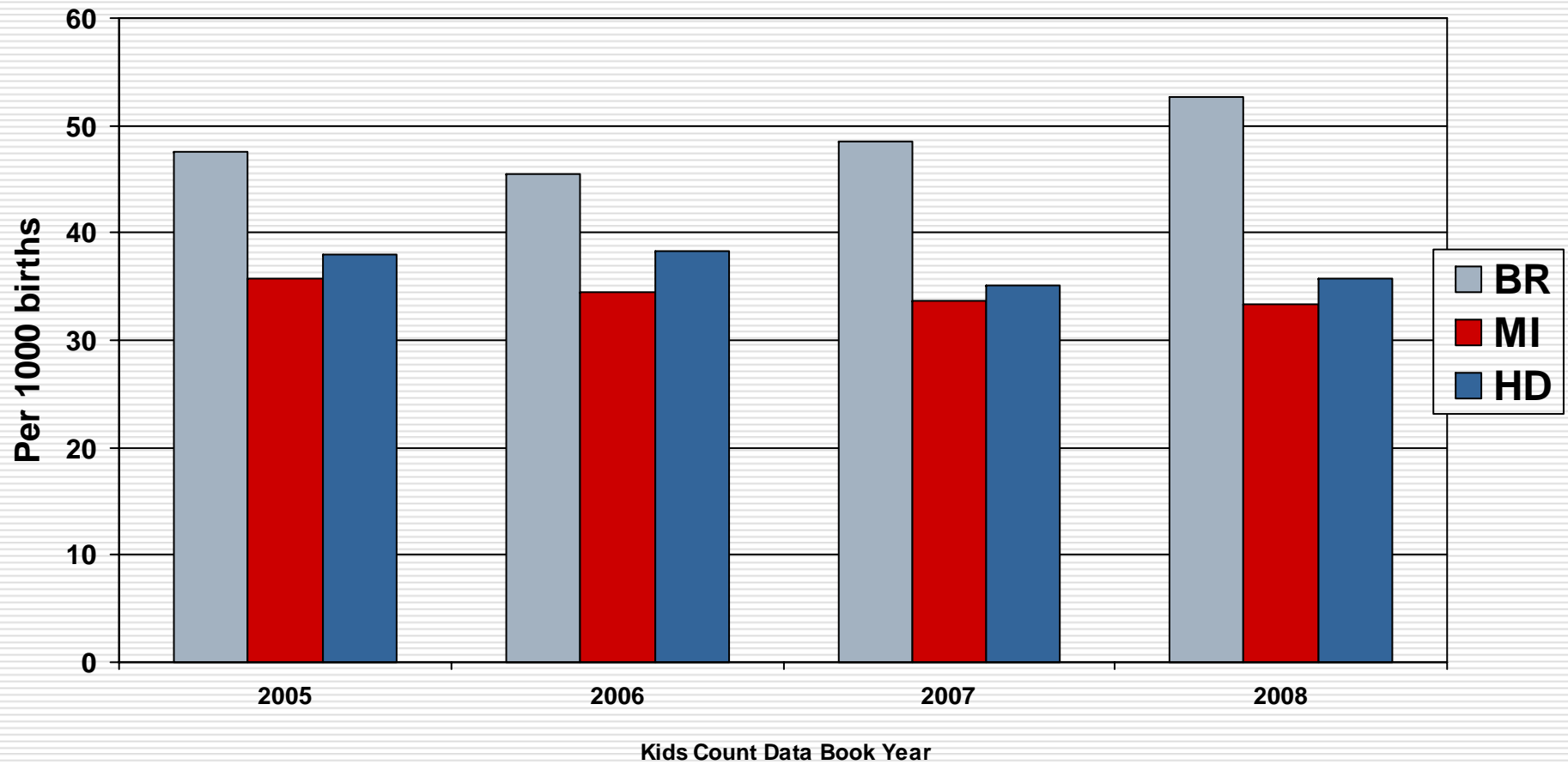
(Current Rank – 75/83)

Source: Kids Count Data Books



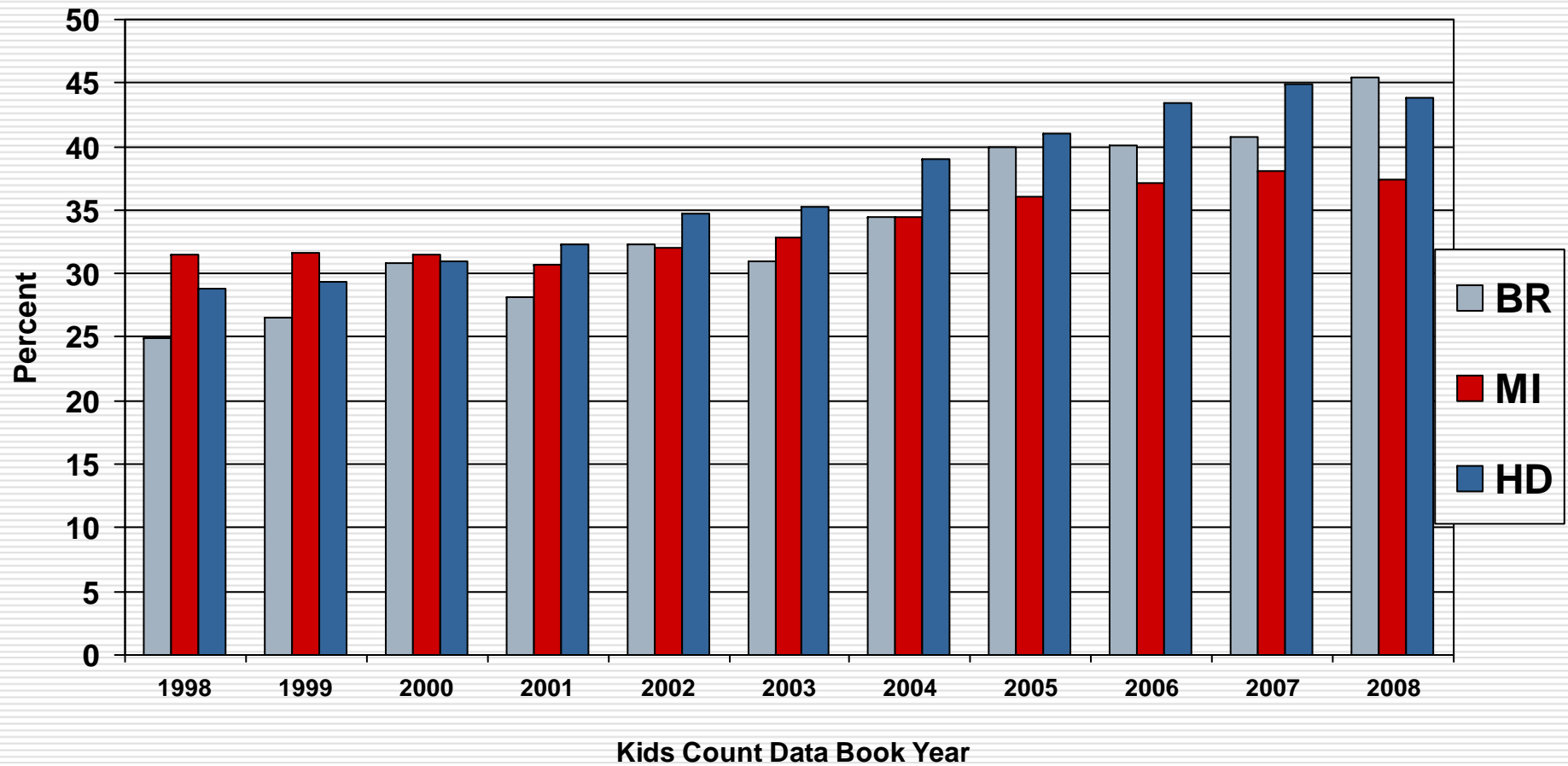
Birth to Teens (Current Rank 51/82)

Source: Kids Count Data Books



Children Receiving Free or Reduced Lunch < 185% of Poverty (Current Rank – 45/82)

Source: Kids Count Data Books

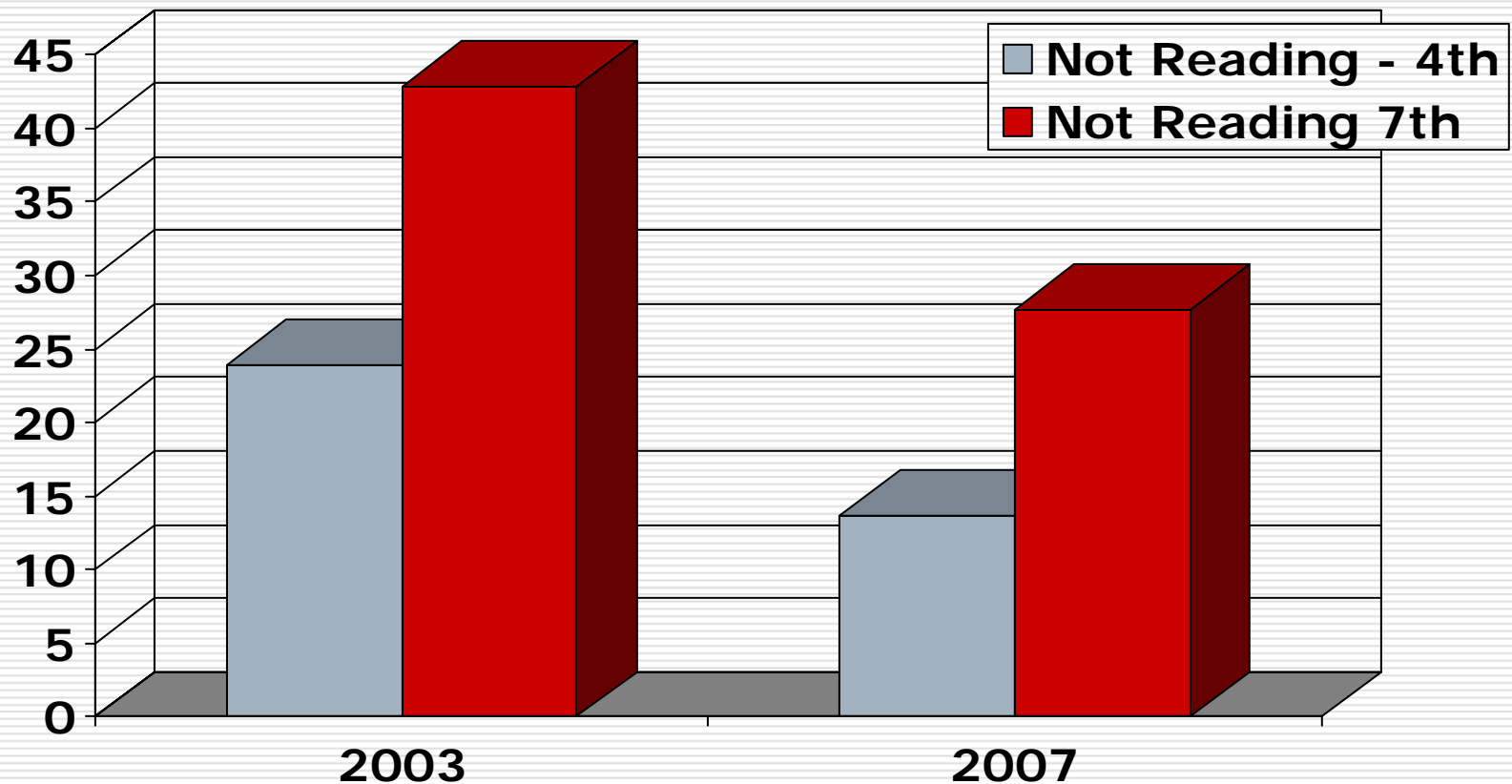


Reading Scores – MEAP

Not Meeting Standard – Hillsdale Only

Current Rank -4th grade- 49/82, 7th grade -66/82

Source: Kids Count Data Books



Other Issues Identified

Source: Kids Count Data Books

□ % Children owed child support

HD – 19.4% BR – 20.7 MI – 19.9

□ % Children receiving NO in child support

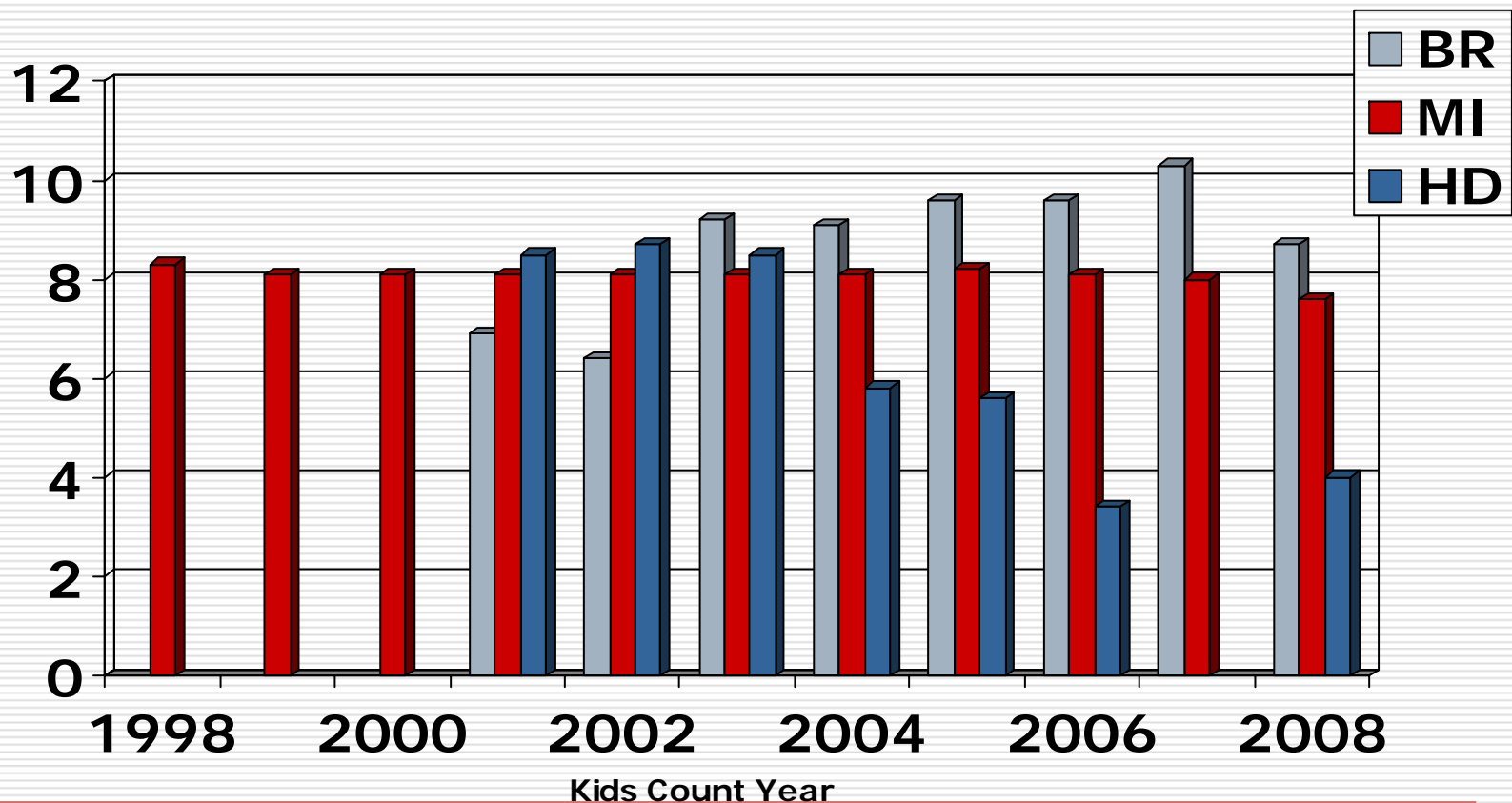
HD -7.5% BR – 13.6 MI -25.5%

Infant Mortality

Hillsdale current rank – 7/52

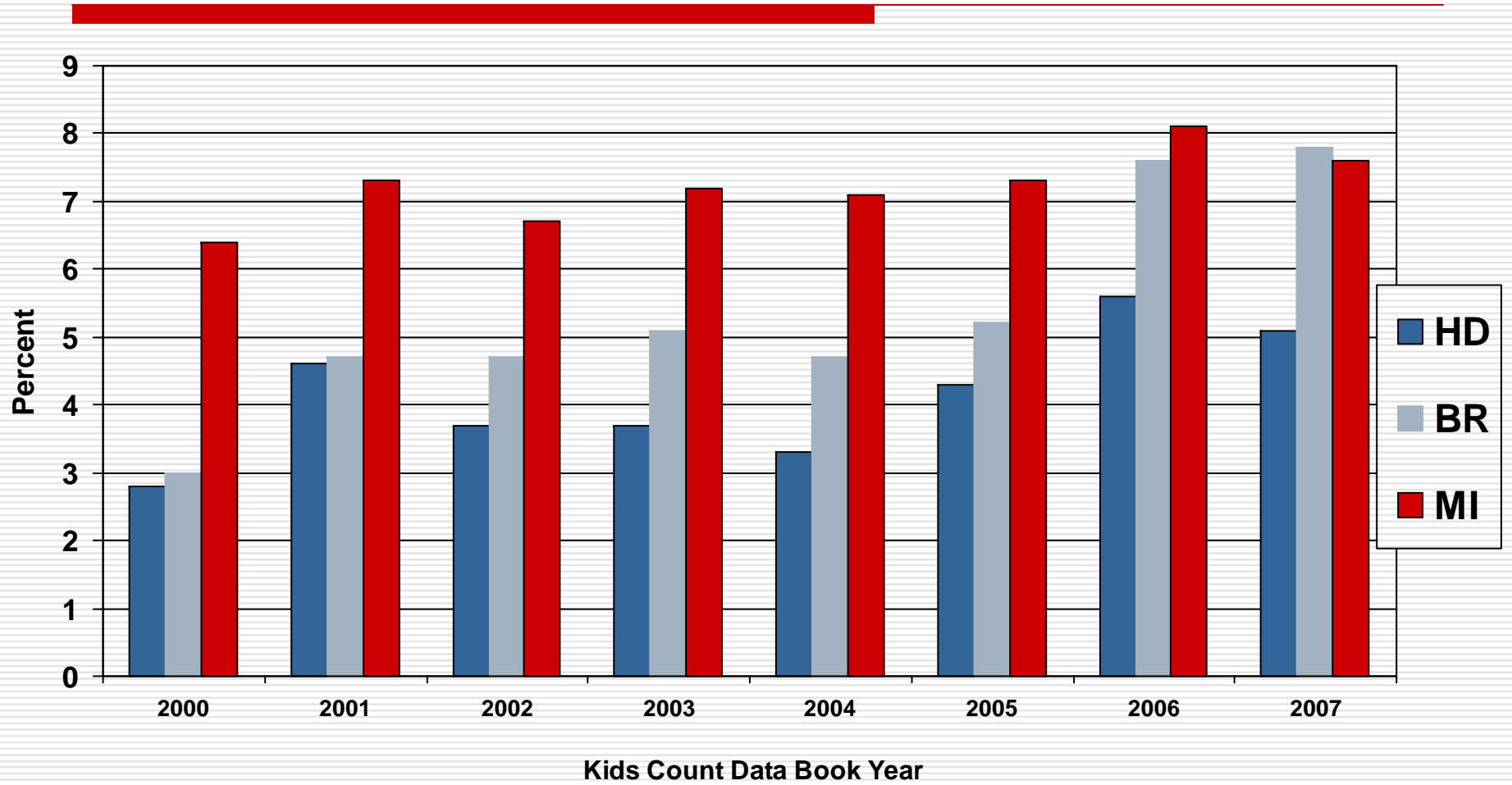
Source: Kids Count Data Books

No bar denotes no rate - too few deaths



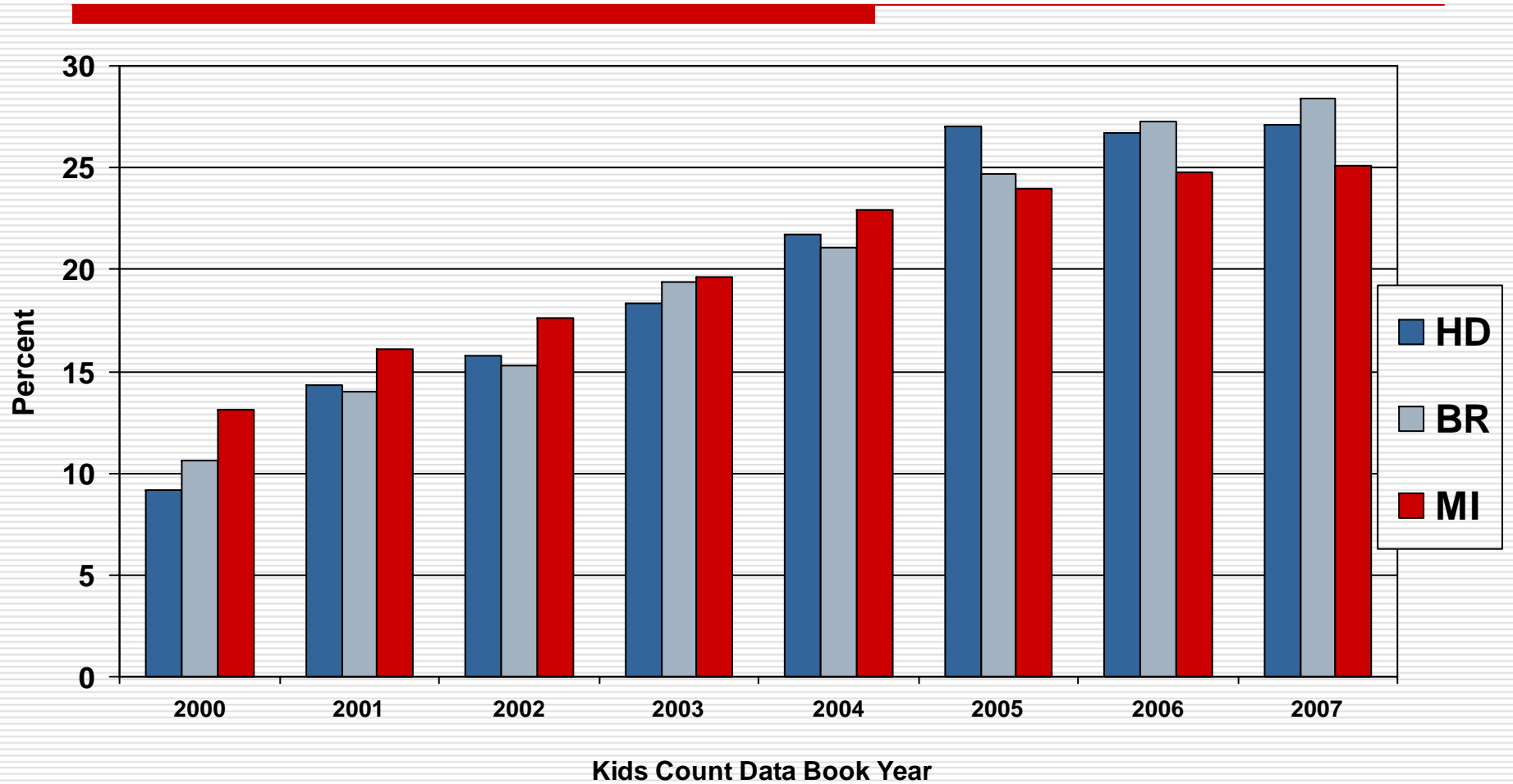
Children on FIP – DHS Cash Assistance

Source: Kids Count Data Books



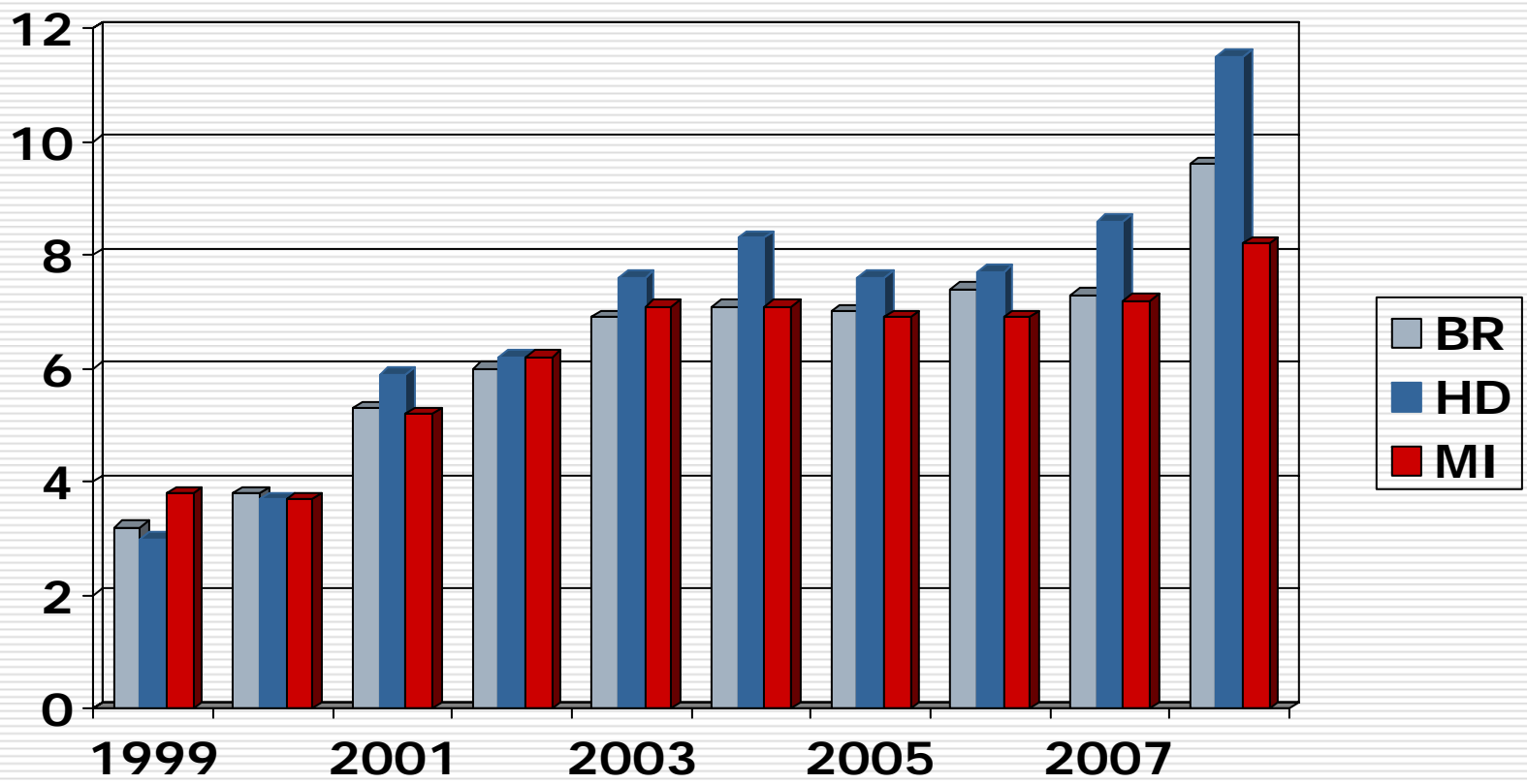
Children on FAP – Federal Food Stamps

Source: Kids Count Data Books



Unemployment

Source: Bureau of Labor Statistics



Other 2008 Items of Interest

Source: Kids Count Data Books

- ❑ No Paternity on Birth Record
HD – 7.4% BR – 9.9% MI – 14.4%
 - ❑ Fully Immunized 19-35 Months
HD – 77.5% BR – 73.5% MI – 72.4%
 - ❑ Children Receiving SSI – Rate/1,000
HD – 19 BR – 11.9 MI – 15.7
 - ❑ Children Born With a Birth Defect
HD – 3.8% BR - 4.5% MI – 6.4%
-

Conclusions

- Economic issues continues to be the overriding issue effecting the county
-

Questions

- ❑ Powerpoint is posted on HSN website at www.bhsj.org/hsn
 - ❑ Kids Count Data is on the Michigan League for Human Services website at www.milhs.org – select Kids Count from the left margin - archives available to 2001
-