

HSN Indicators



**Children Birth to Five
October 2006**



Glossary of terms


- **Number** - Actual number of reported cases
- **Percent** - The percent of the total number of cases compared to the population - ex: 1 out of 4 = 25%
- **Rate** - How many you would expect, given your actual number, based on an agreed upon higher population. For example, most health related 'rates', compare all actual numbers to a population of 100,000. Rates are used to compare numbers between small groups and large groups.

$$\frac{30}{46,500} = \frac{64.6}{100,000} = \frac{6,395}{9,900,000}$$

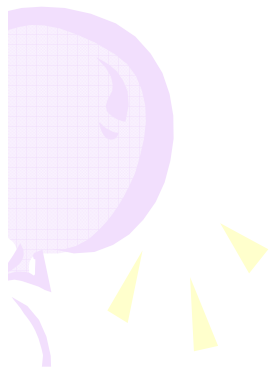
- The above example changes 30 cases in Hillsdale County with a population of 46,500, to a rate of 64.6 cases per 100,000. This allows comparison to a larger population rate. Michigan, with 6,395 actual cases, has the same rate – 64.6
- 



Is your data significant?



3% exceeds 2% by 50%, not by 1%

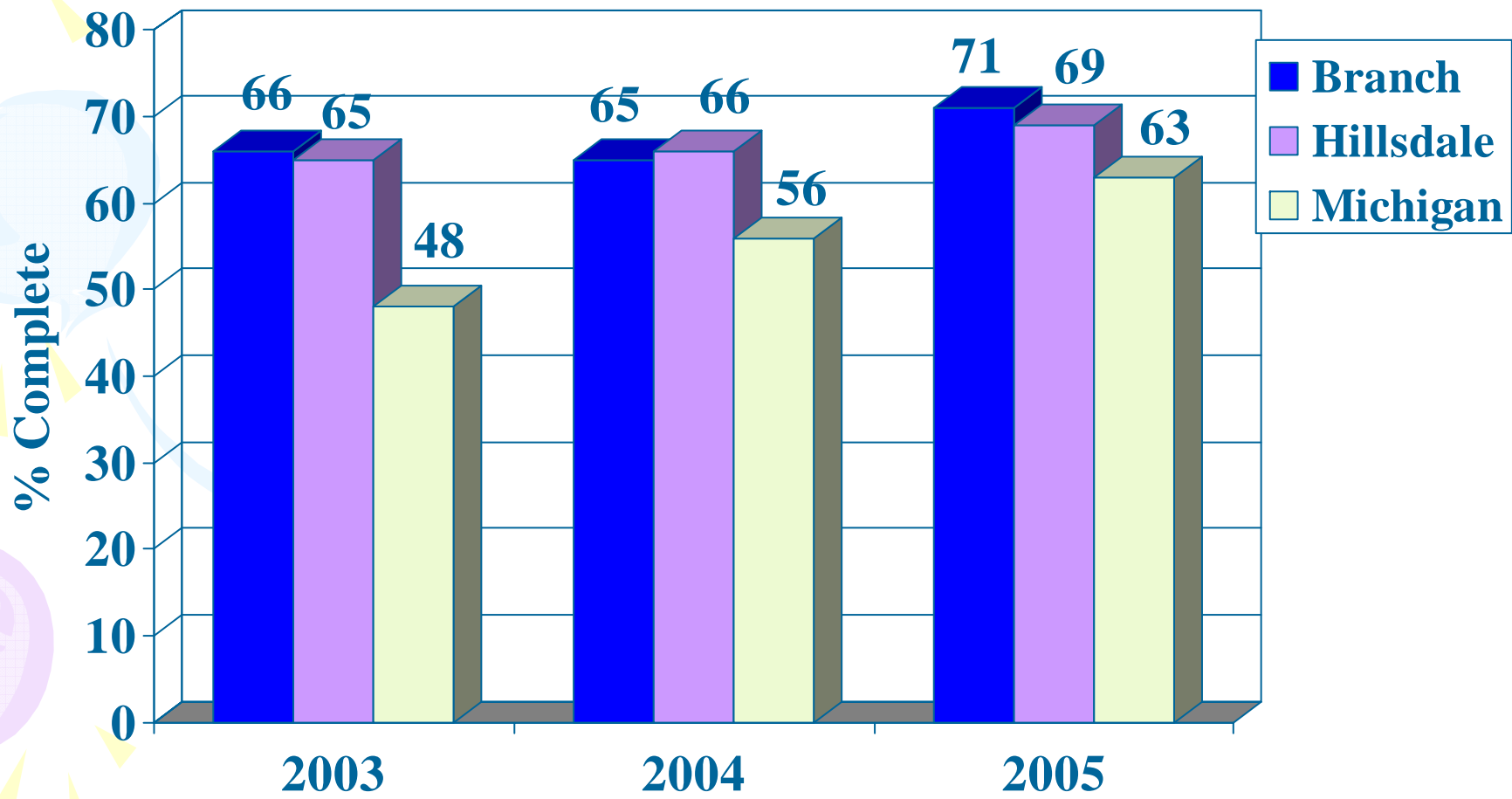


Immunizations



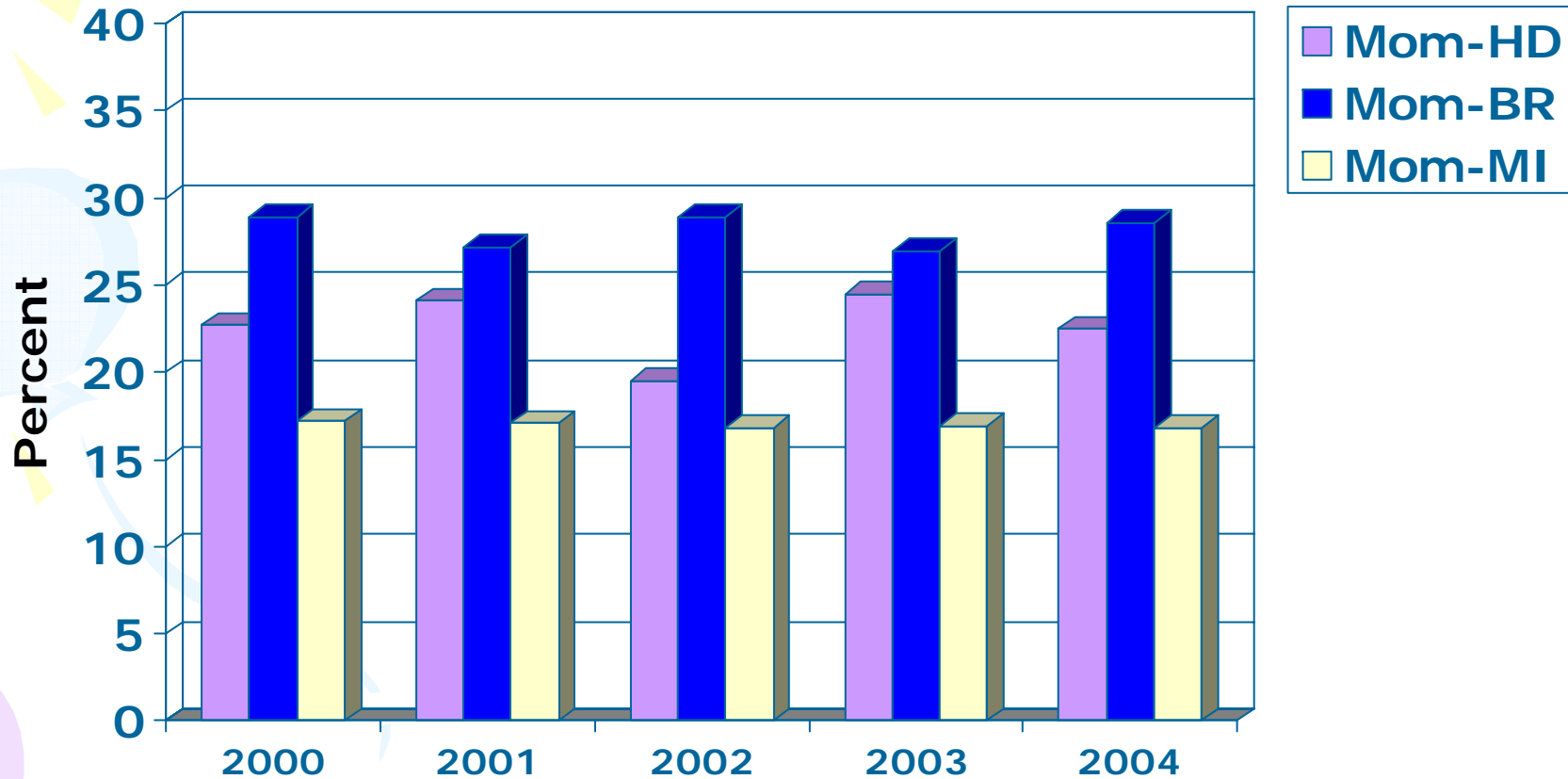
Complete immunizations, 19-36 Months Percent Complete

Source: Community Health Agency/MCIR



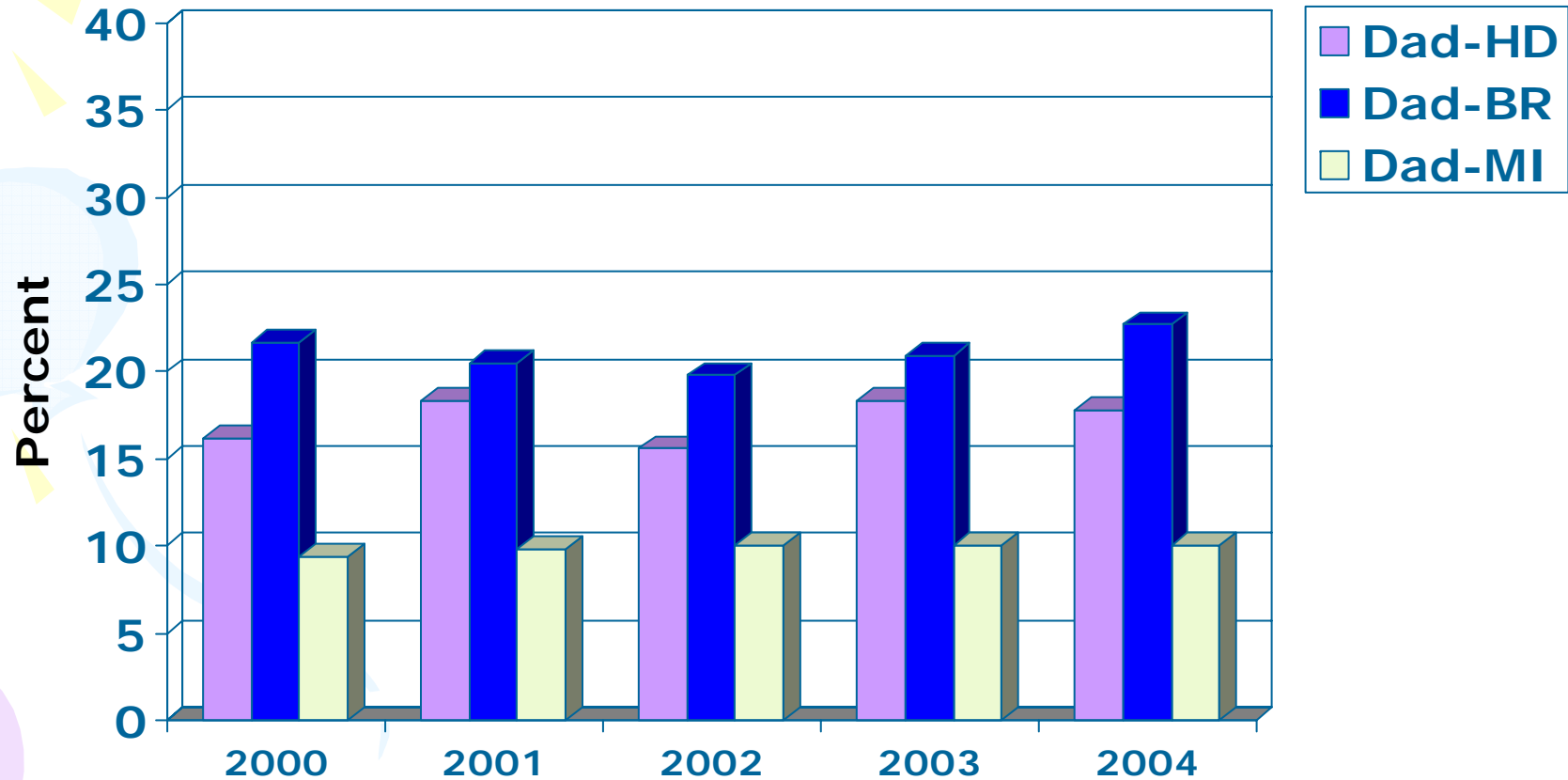
Percent of Hillsdale mothers without a high school diploma

Source: Michigan birth files



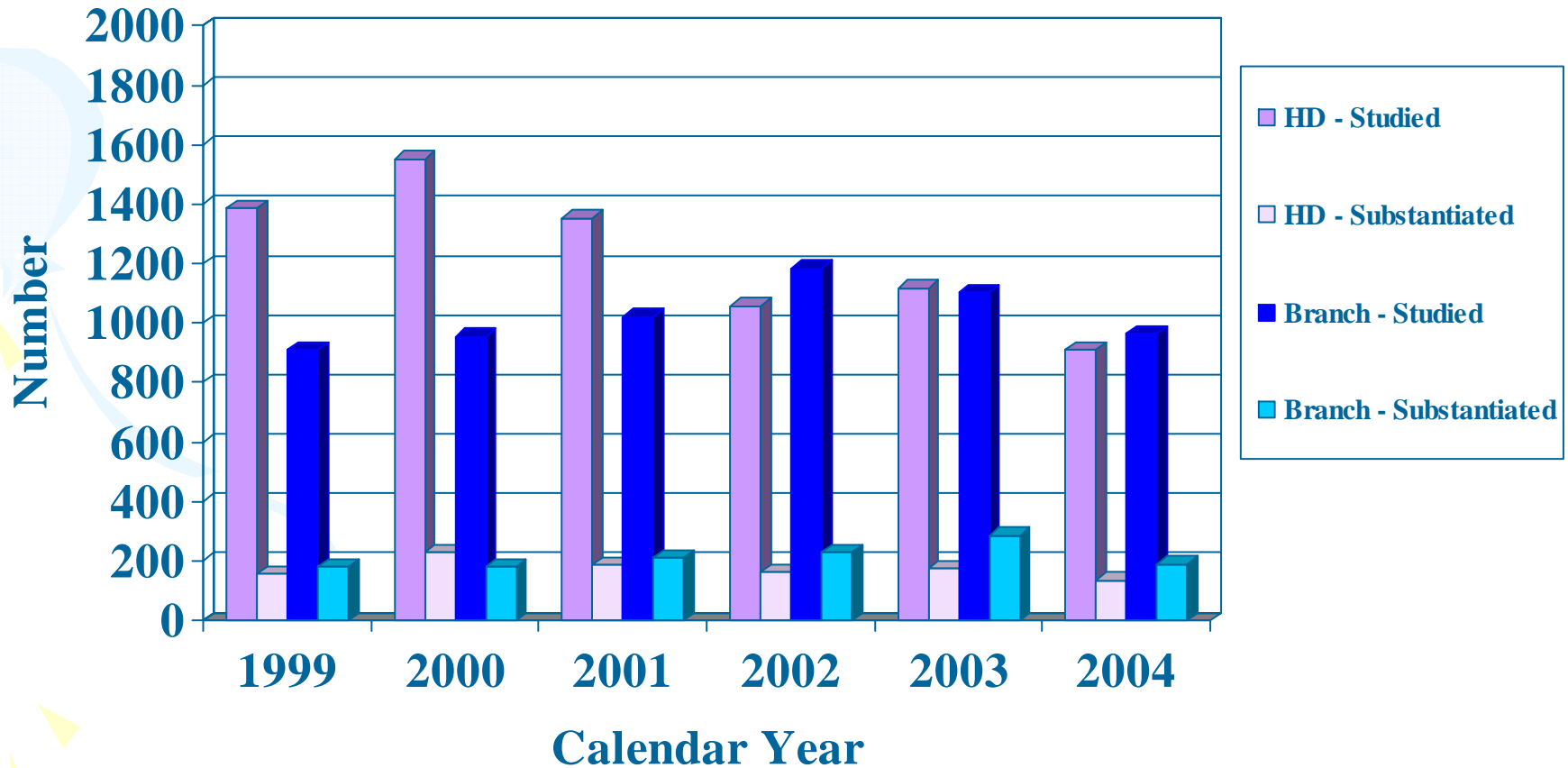
Percent of Hillsdale fathers without a high school diploma

Source: Michigan birth files



Abuse and neglect (Studied vs. substantiated) 1999-2004

Source: Kids Count Data Books



Number of children in Hillsdale County, age 0-5, who were victims of domestic violence, 2002-2005

Source: MSP Uniform Crime Reports

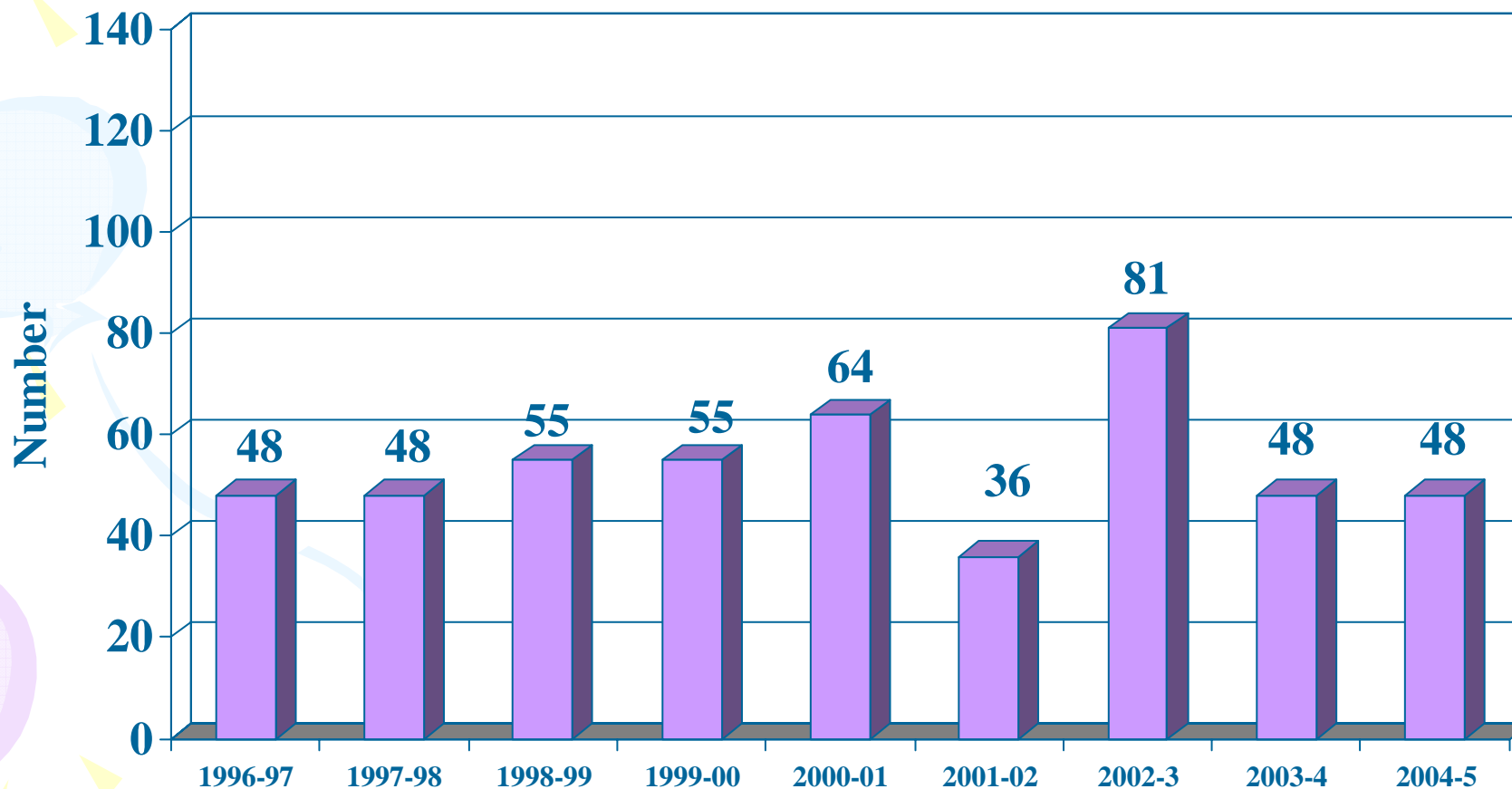
Victims of Domestic violence Hillsdale Branch

2002-	2	1
2003-	2	2
2004	2	0



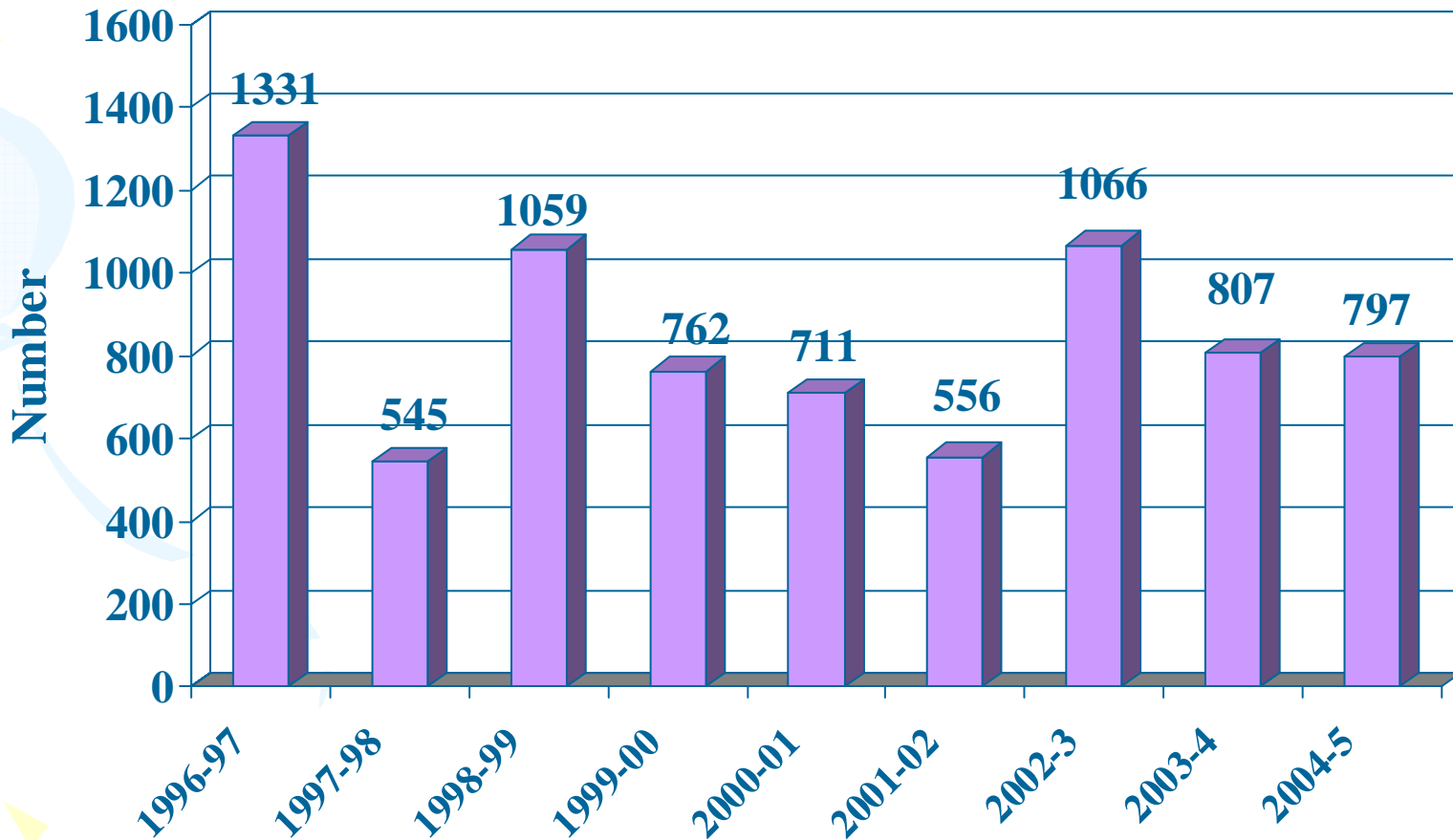
Number of children in Hillsdale County ages 0 to 18 housed by Domestic Violence Shelter, 1996-2005

Source: Domestic Harmony



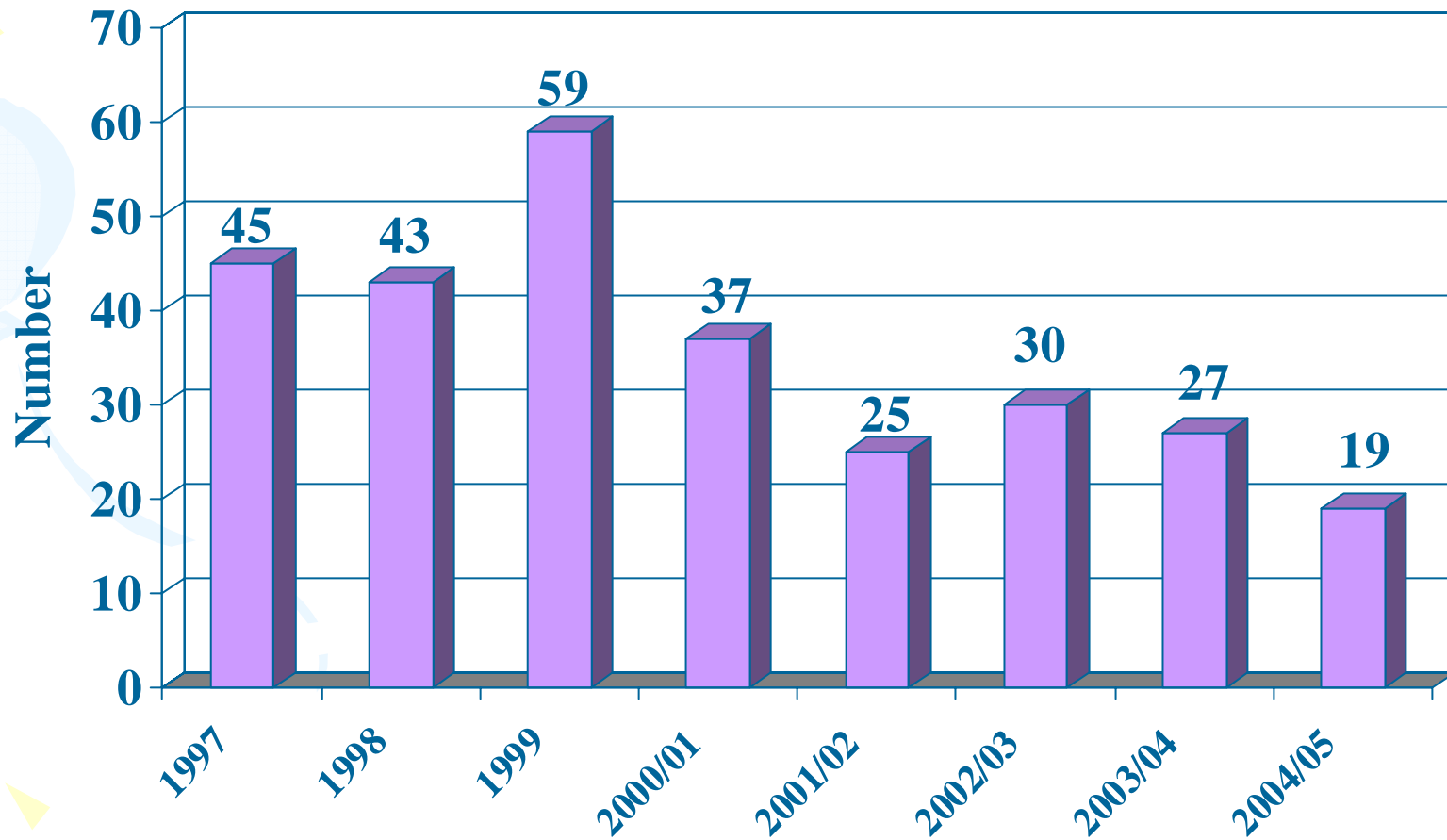
Number of resident nights provided for children ages 0 to 18 by Domestic Violence Shelter, 1996-2005

Source: Domestic Harmony



FIA Foster Care, youth under 18, 1997-2005 - averages

Source: DHS Website PUB 170


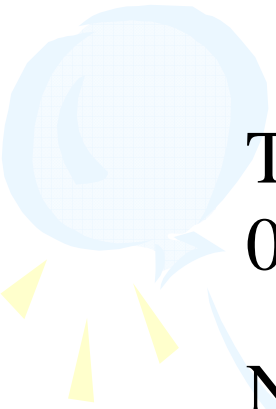




Poverty estimates for Hillsdale County children age 0 to 5

Source: U.S Census 1990 & 2000

	1990	1993	1995	1997	2000
Total Children 0-5	3296	3669	3598	3554	3643
Number in Poverty	685	919	792	596	428
Percentage in Poverty	20.8%	25%	22.0%	16.8%	11.8%



Pregnancy & Prenatal Care

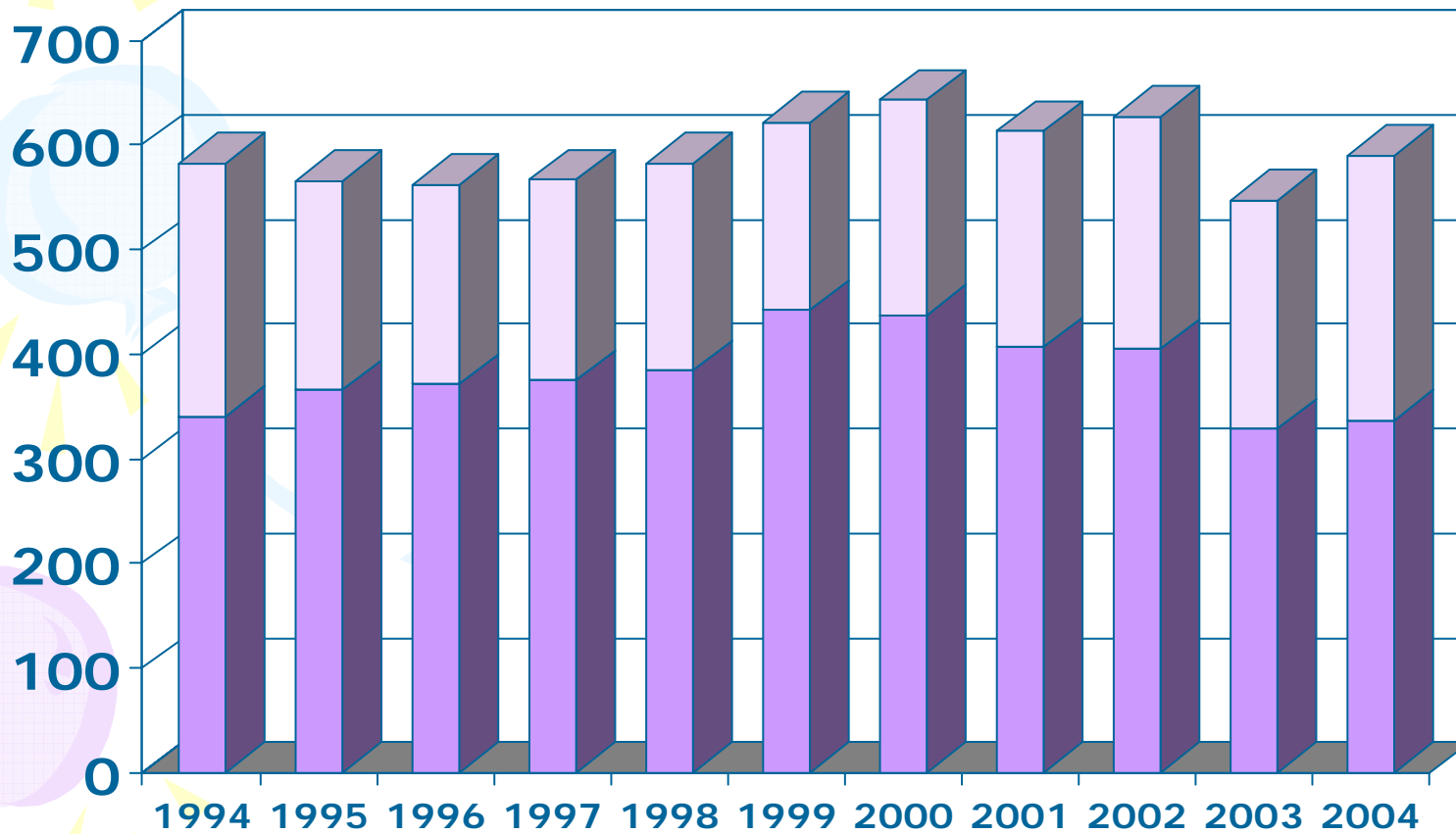


Number of Hillsdale County births, Medicaid births 1994-2004

Source: MDCH Birth Files

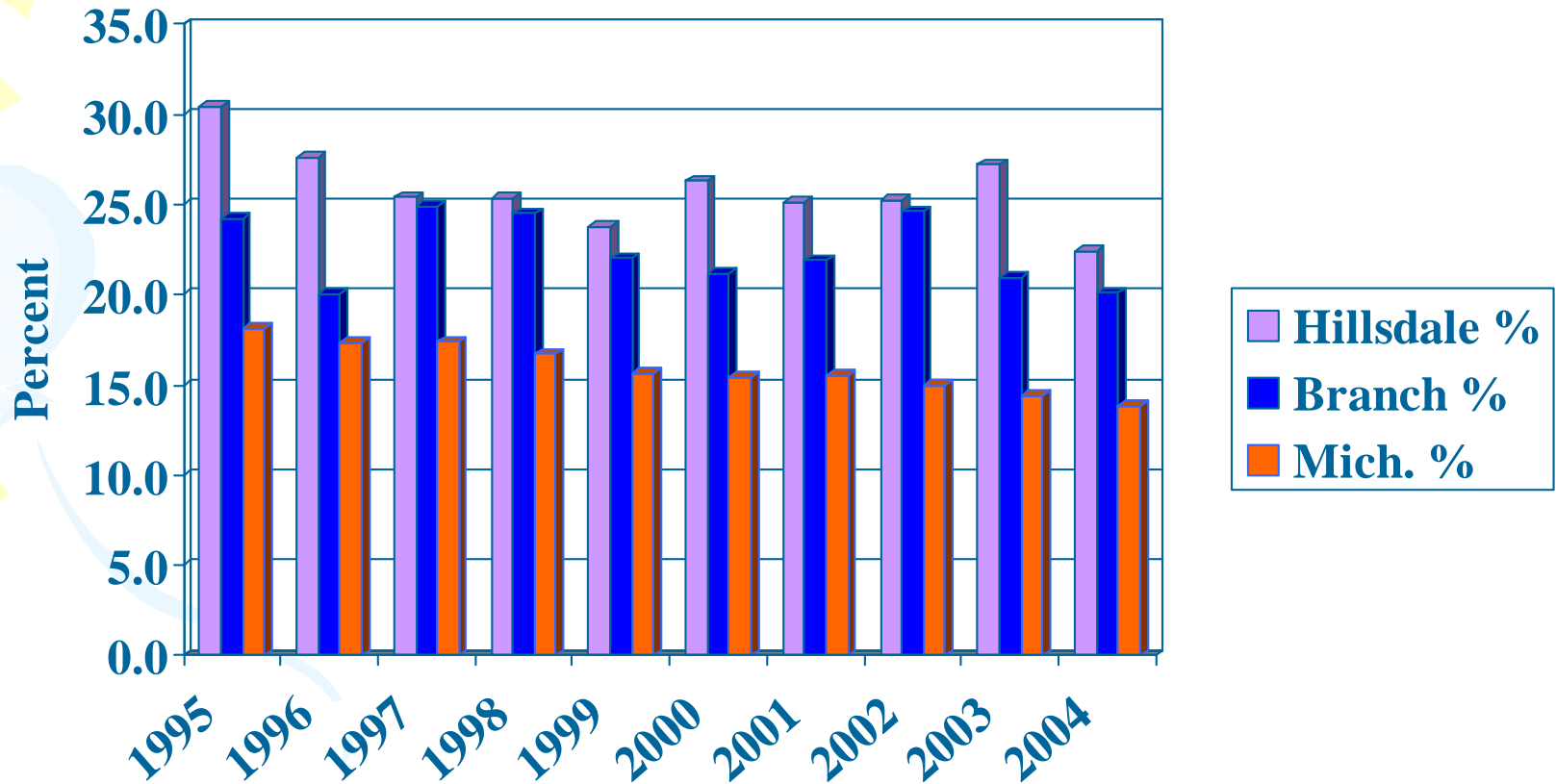
% Medicaid 1999 -29%, 2004 - 43%

Medicaid
Non Medicaid



Percent of mothers who report smoking while pregnant Michigan/Branch/Hillsdale Co.

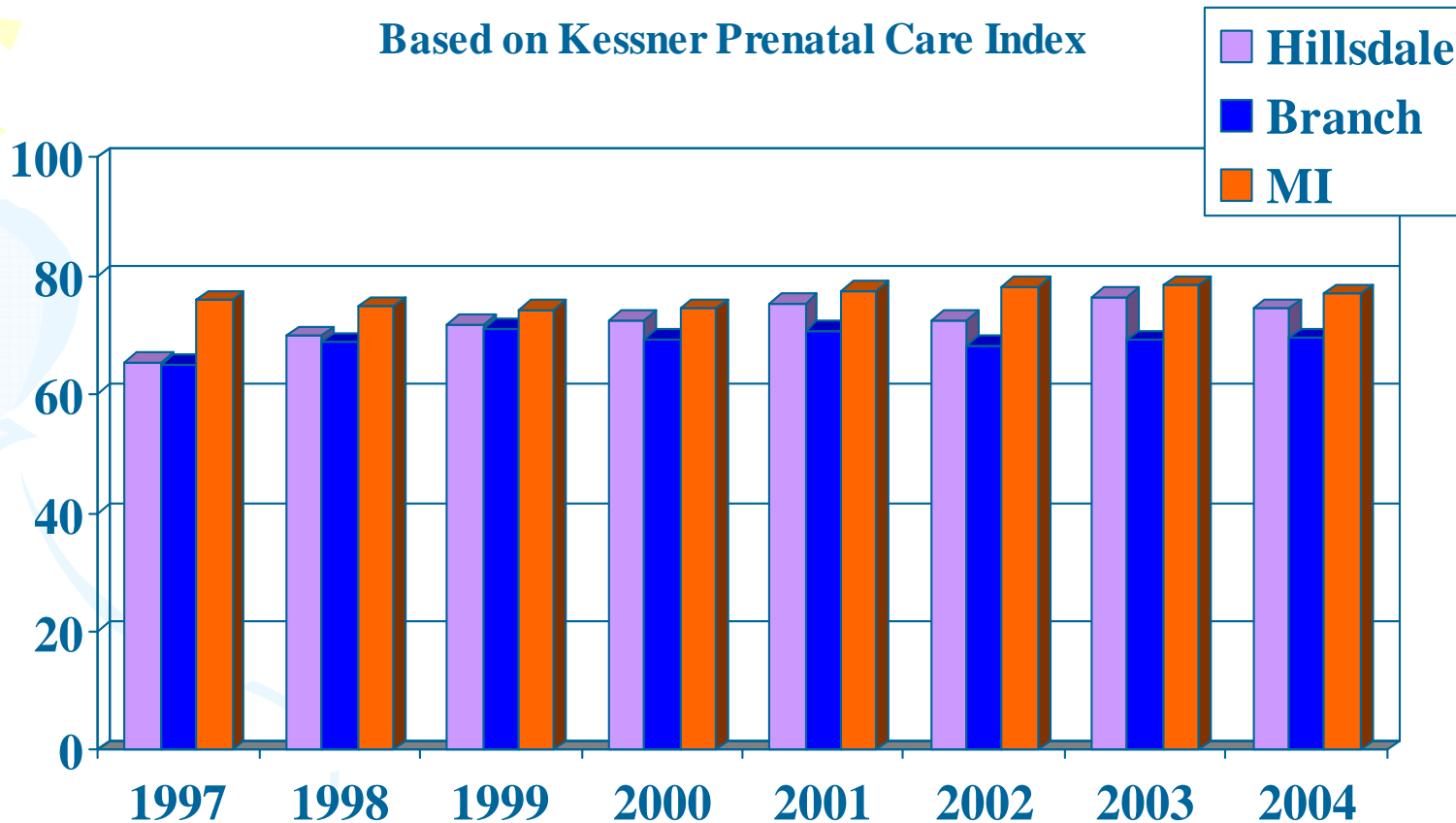
Source: Michigan Birth Files



Adequacy of Prenatal Care during pregnancy –Hillsdale/Branch/MI

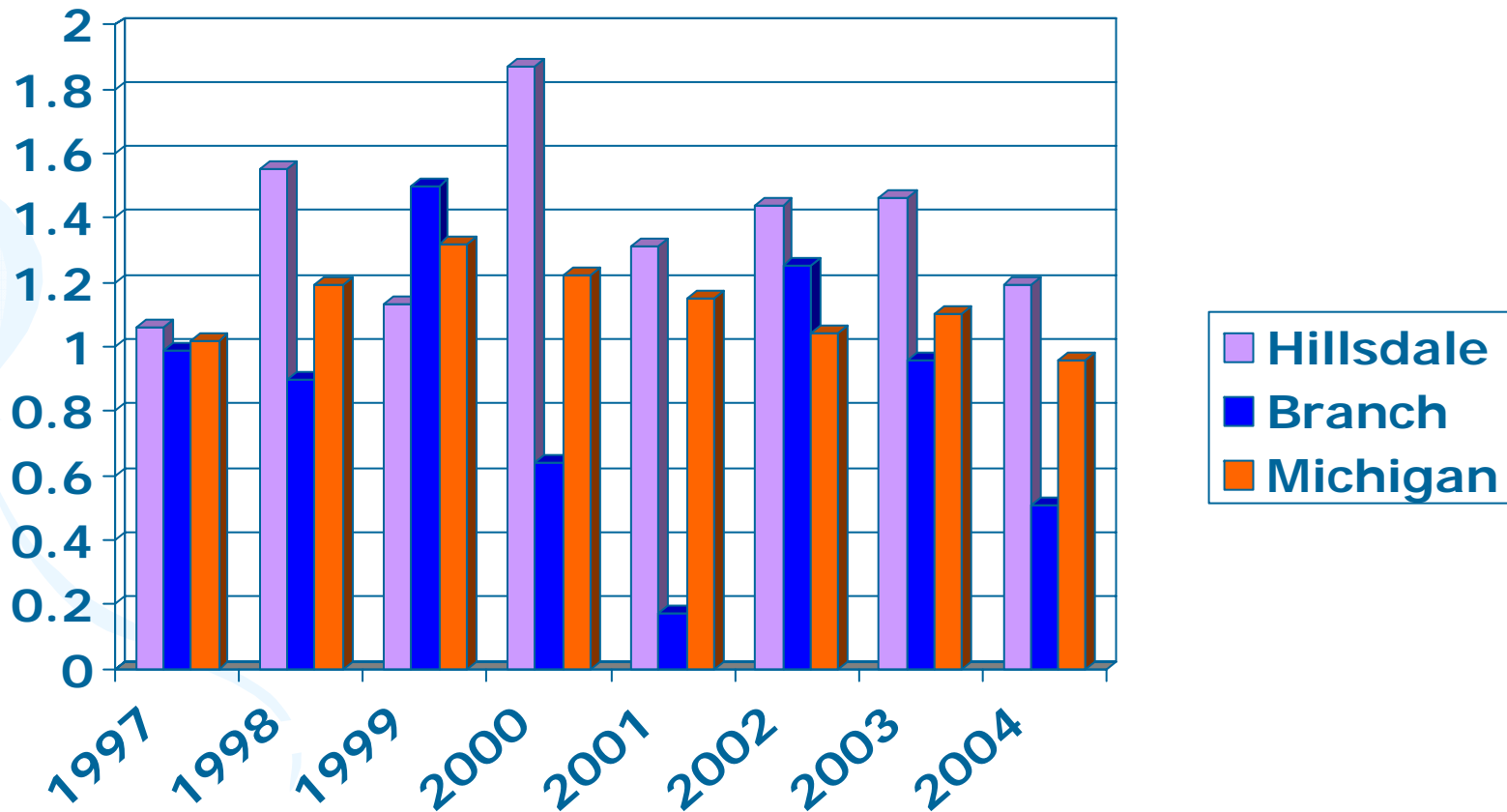
Source: Michigan Birth Files

Based on Kessner Prenatal Care Index



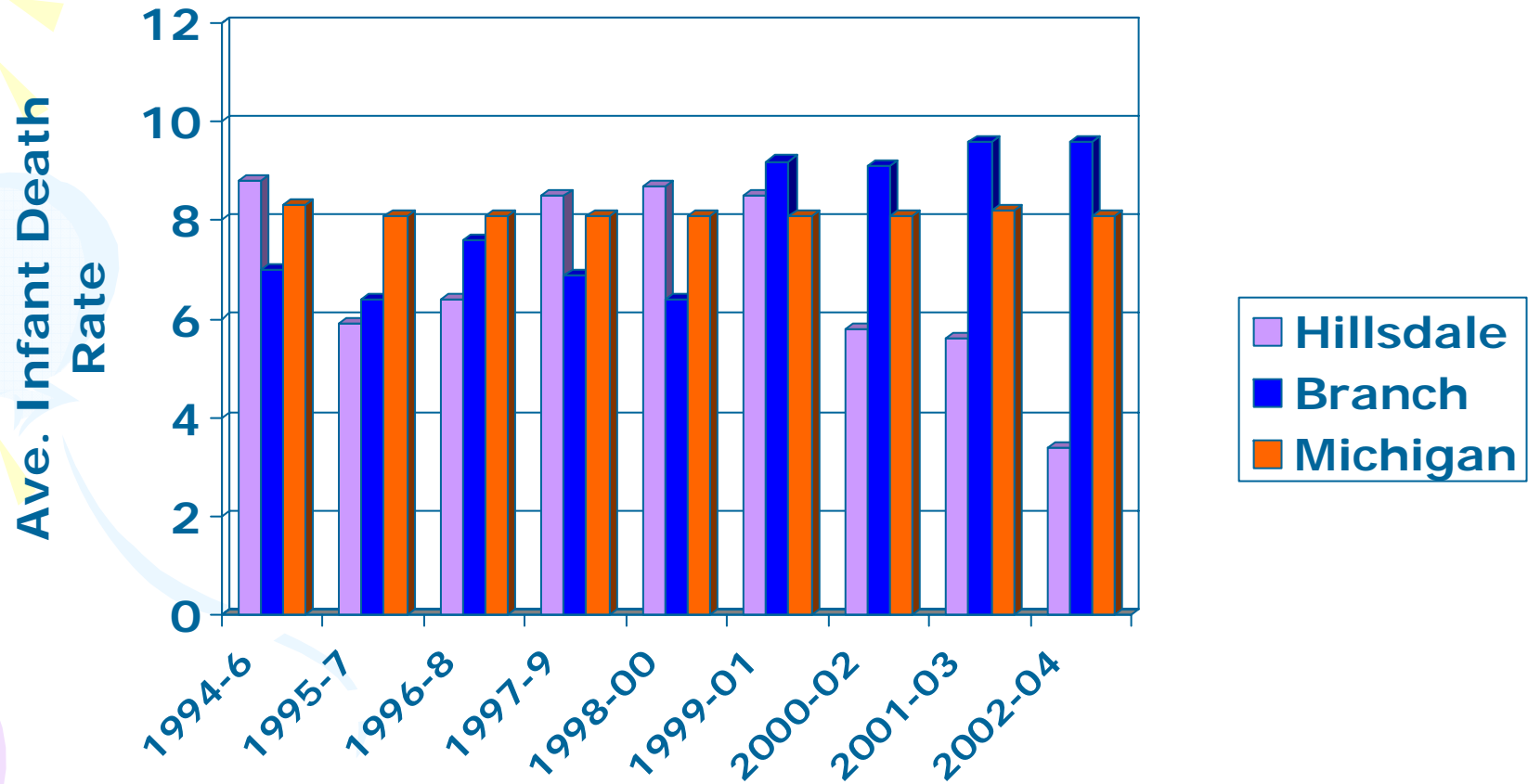
No Pre-natal Care as a % of births – Hillsdale/Branch/MI

Source: Michigan Birth Files



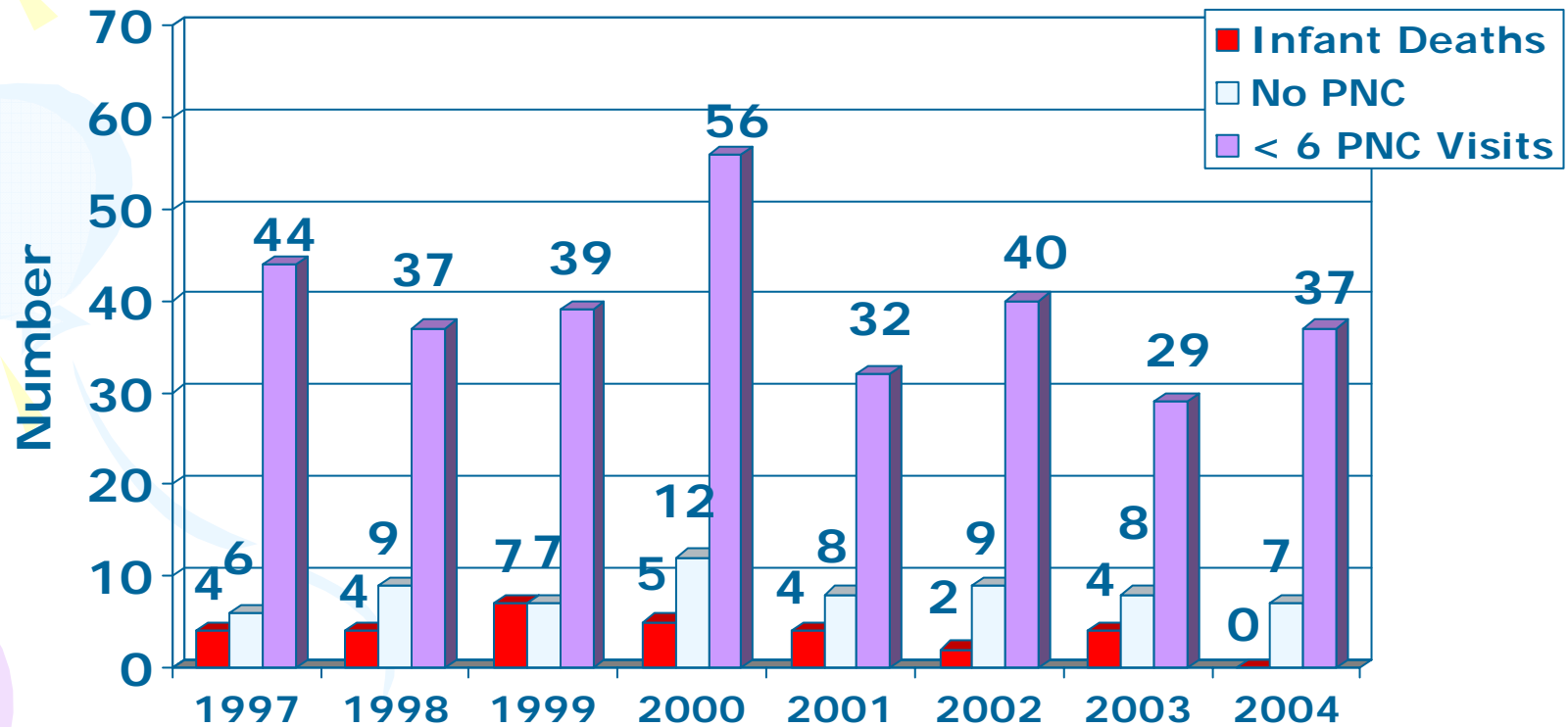
Infant Mortality – Hillsdale County 3 year moving average (1994-2004)with Branch/MI

Source: Michigan birth files



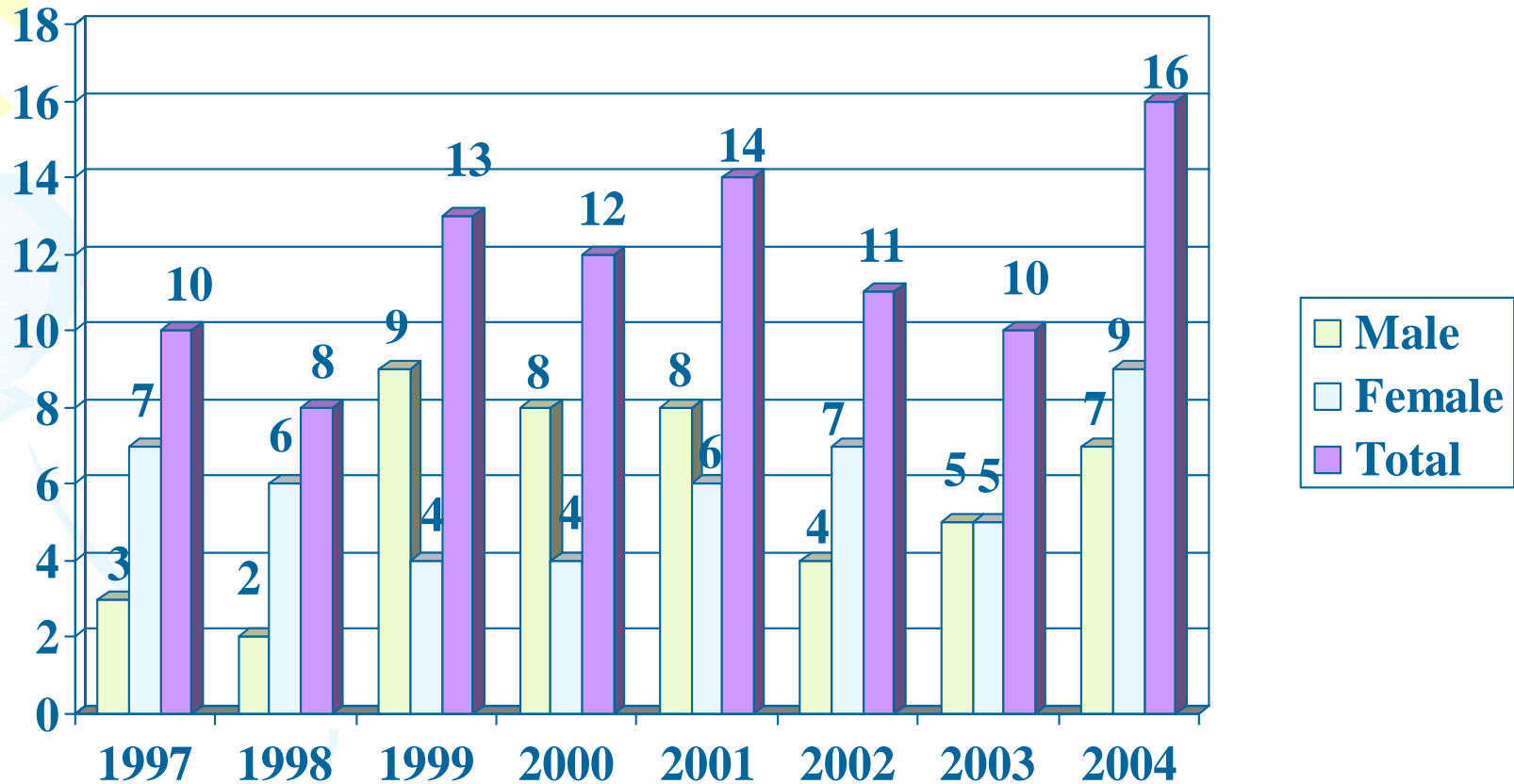
Infant deaths and Prenatal Care Statistics – Hillsdale County

Source: Michigan Birth Files



Deaths of children ages 0 to 18, Hillsdale County, 1997-04

Source: MDCH Death Files

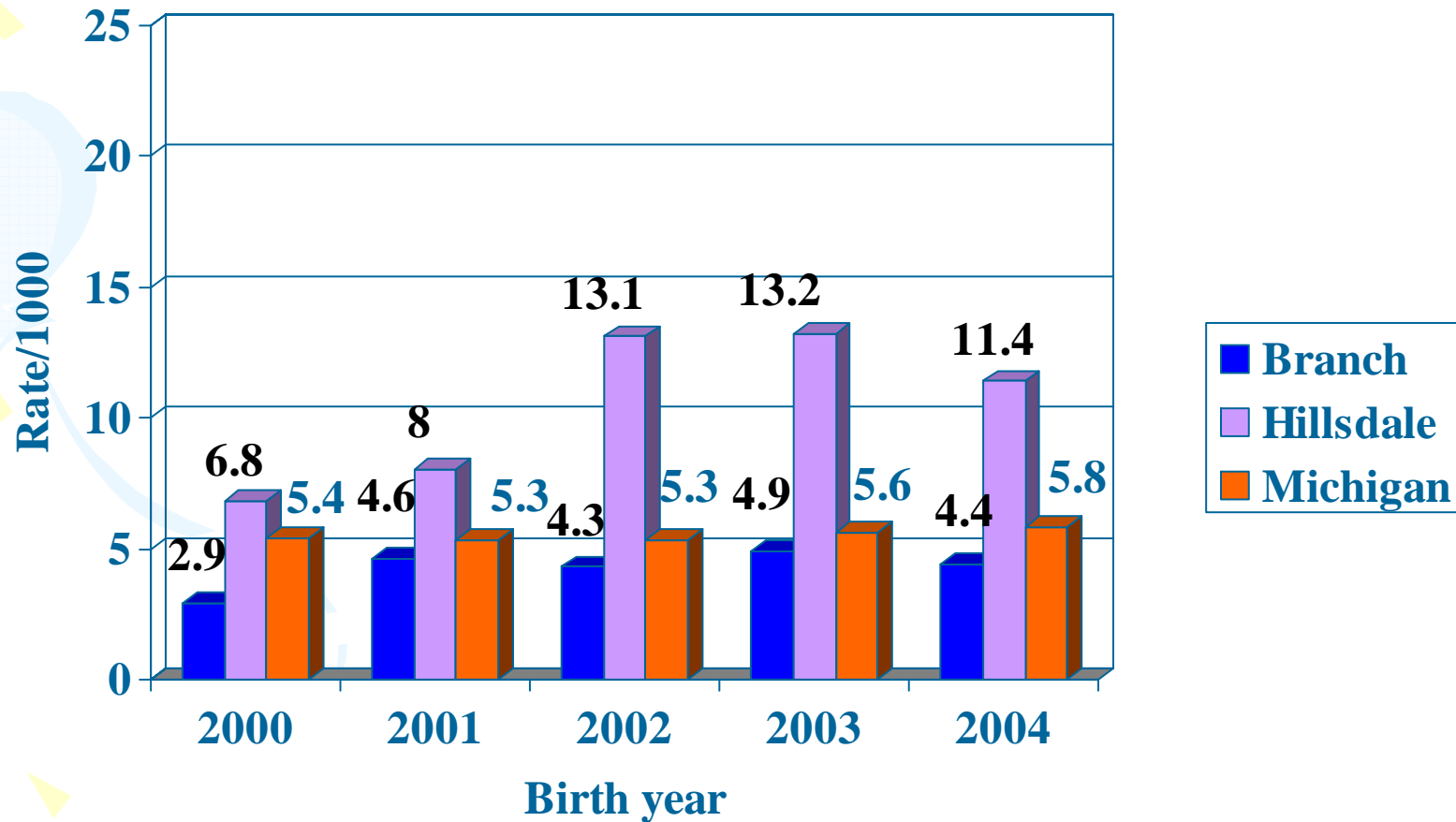


Branch vs. Hillsdale vs. MI

Abnormal conditions of newborn

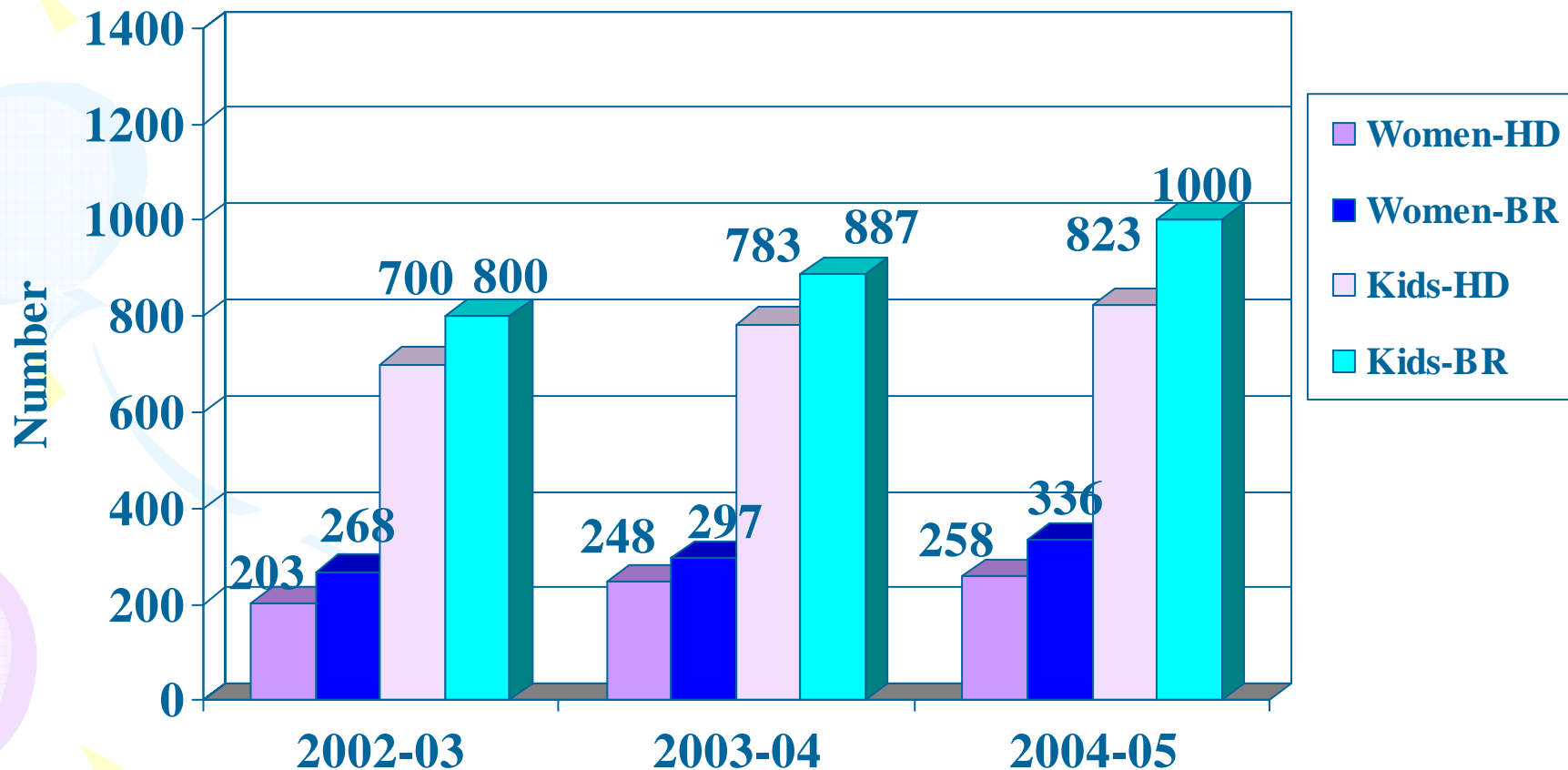
(Including; Anemia, birth injury, Fetal Alcohol Syndrome, and seizures)

Source: Michigan Birth Files



WIC enrollment, Hillsdale/Branch Counties, 2002/3 to 2004/05

Source: MDCH WIC program data





Conclusions – Birth to 5

- No prenatal care as a % of births
 - Hillsdale more than 20 higher than MI
 - More than double Branch County
- Moms who report smoking while pregnant
 - HD is 62% higher than MI
- No HS diploma for parents
 - HD dads 78% > than MI with no HS Diploma
 - HD moms 34% > than MI with no HS Diploma
- Only 12.8% of HD adults >25 have a college degree compared with 21.8% in Michigan –(US Census data)



Conclusions – Birth to 5 - Continued

- Current 3 year infant mortality rate (2002/04) is less than half of the Michigan Branch County rates
- Children ages 19-36 months are compliant for immunizations at a 10% higher level than children statewide (69% vs. 63%)
- The Classification 'Abnormal Conditions of Newborn' – needs more in-depth study as the percent for Hillsdale is much higher than the percent for Michigan (11.4% vs. 5.8%)