
HSN Report

Seniors

August, 2003

Statistical Question ???

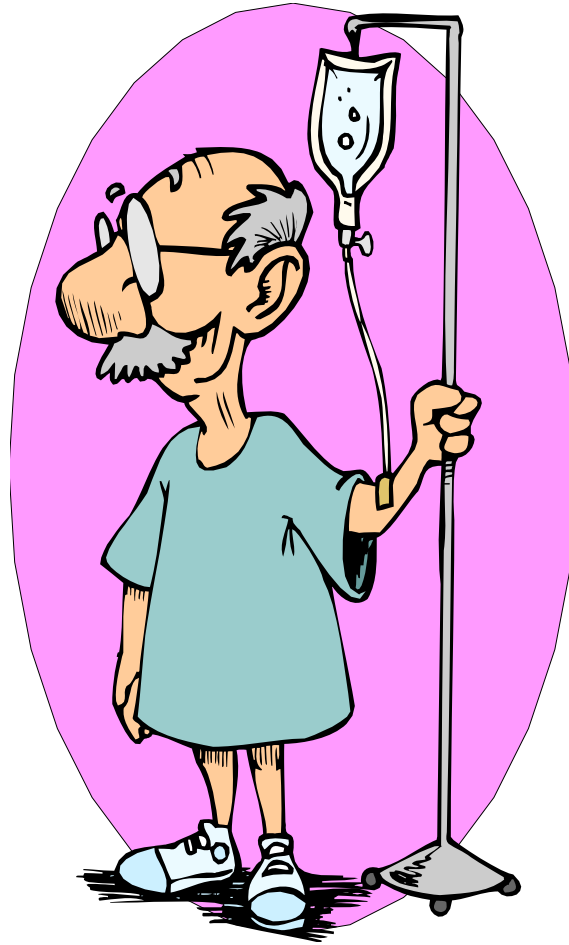
- Your retirement fund went up 60% last year and went down 40% this year. Your up 20% right??
-

Answer: Wrong!

- Year 1 - $\$100 \times 1.6 = \160
 - Year 2 -40% of 160 = (64)
 - Result = $160 - 64 = \$96$
-

What is making us sick?

(Other than that retirement account)

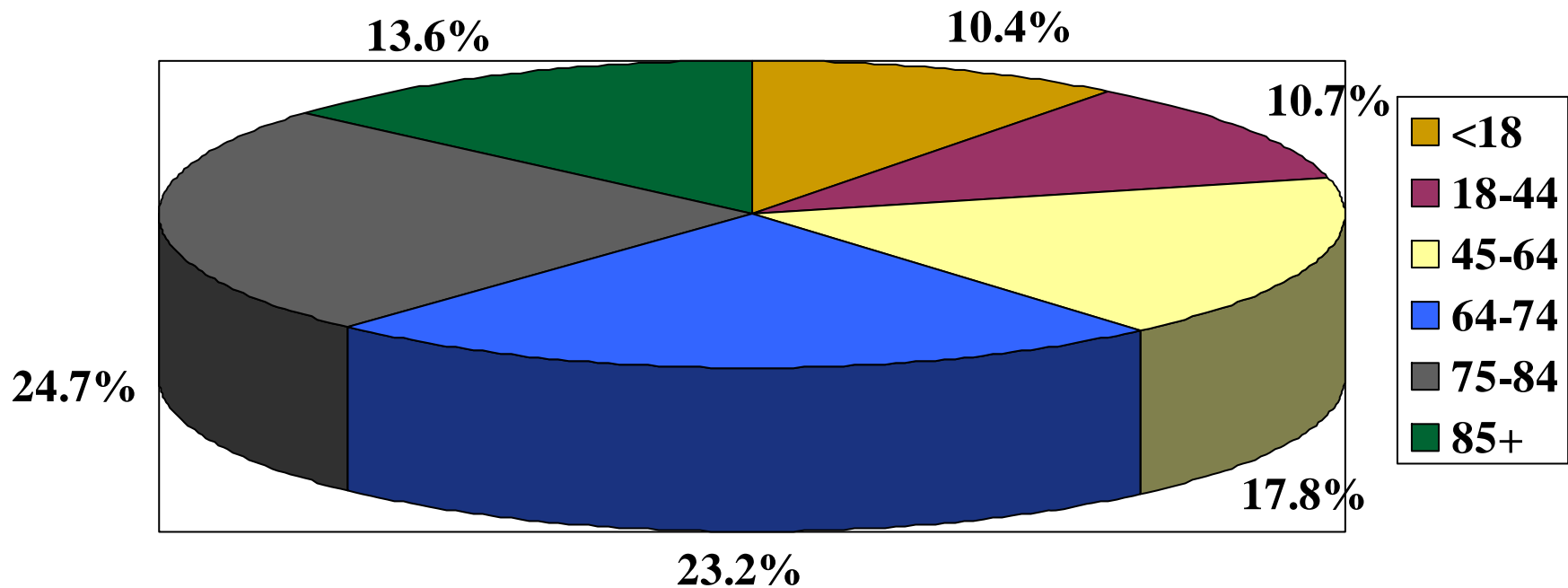


Number and rate/10,000 of
leading preventable hospitalizations, Hillsdale
residents age 65+, 2000

Cause	Number	HD Rate	MI Rate
Cong. Heart Failure	180	290.7	244.4
Bacterial Pneumonia	112	184.6	169.3
COPD	110	152.6	115.2
Kidney/Urinary	37	65.9	60.9
Angina	23	45.1	23.3
Cellulitis	19	30.8	30.6
Diabetes	9	23.1	24.4

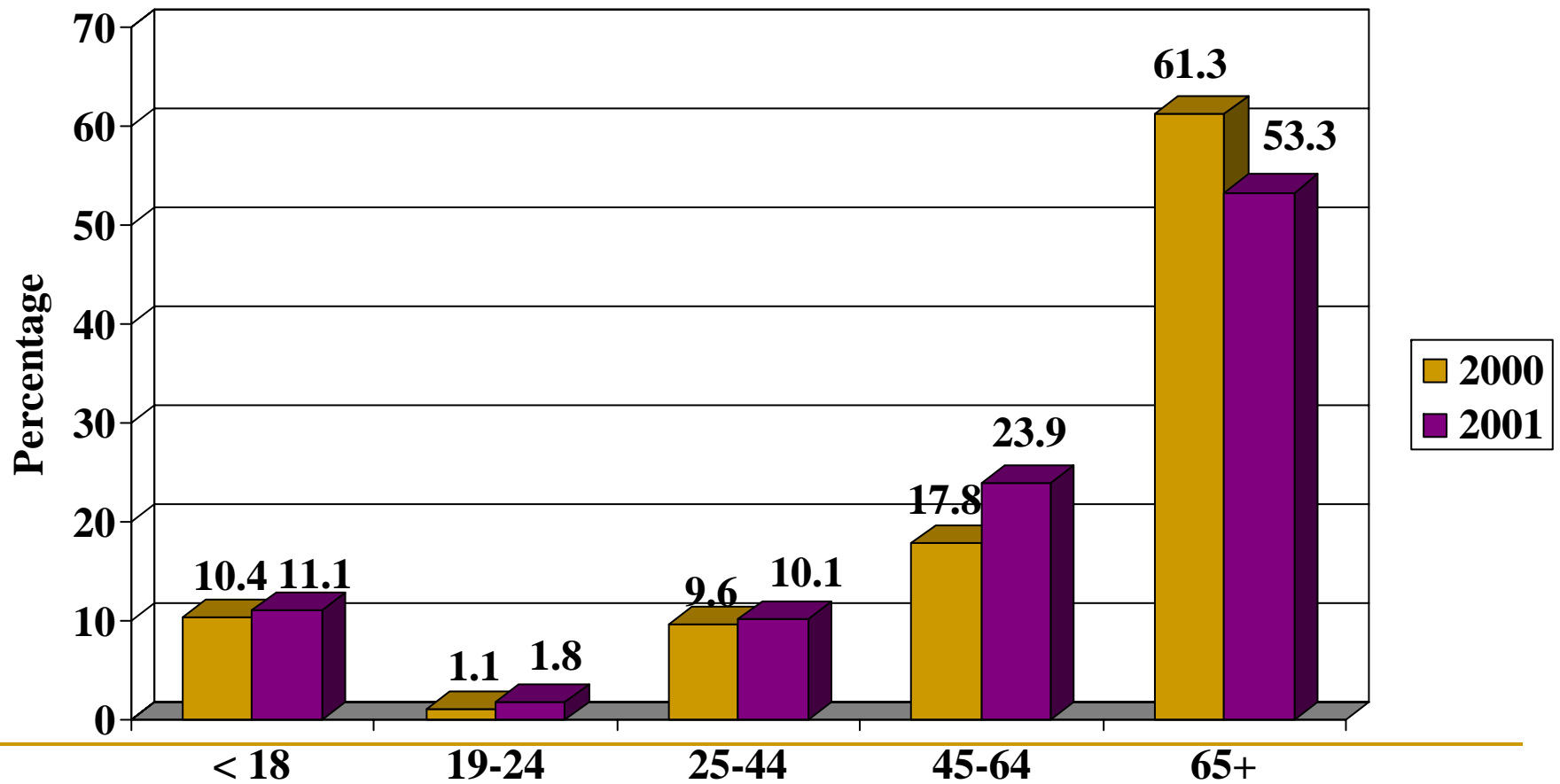
Percentage of preventable hospitalizations by age group, Hillsdale, 2000

Source: Michigan Resident Inpatient Files



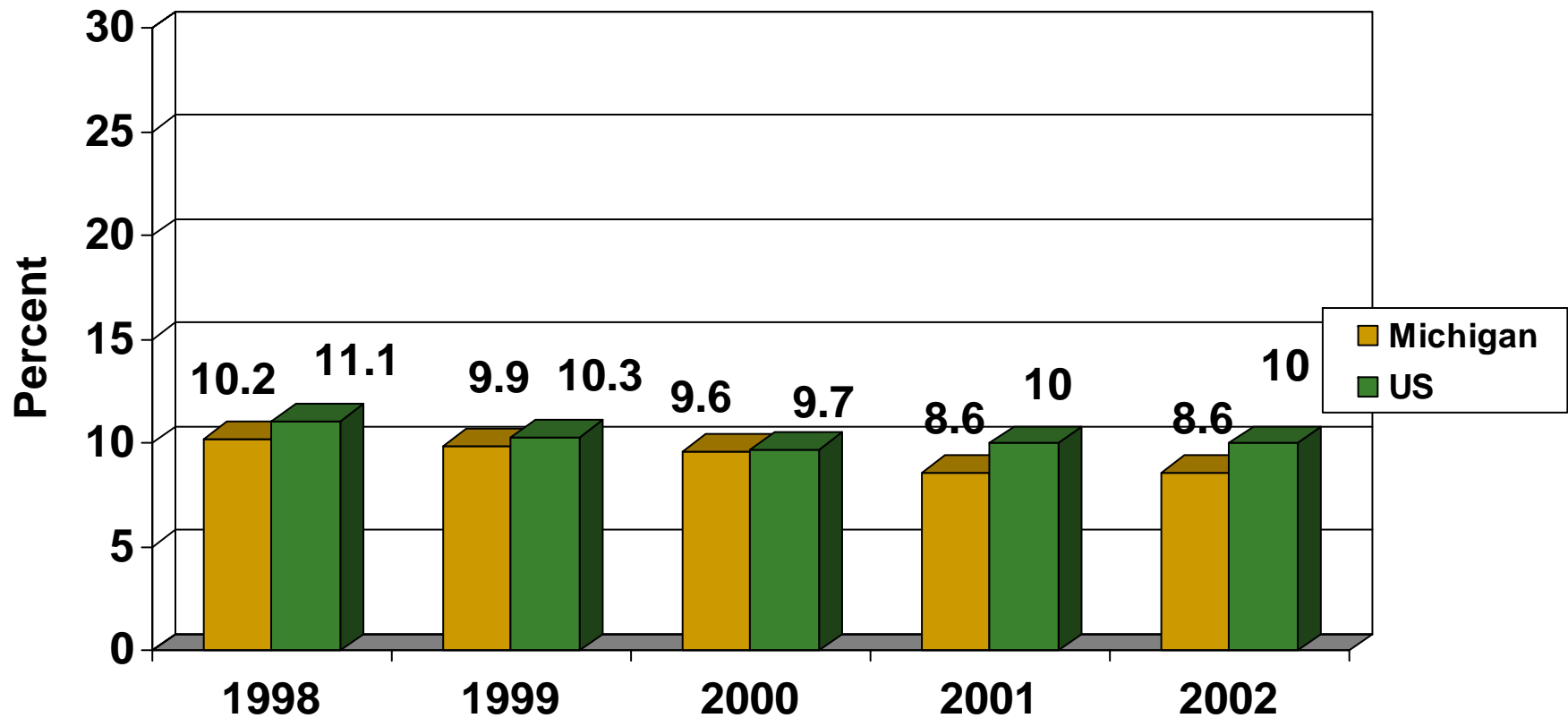
Percentage of preventable hospitalizations by age group, Hillsdale 2000 vs. 2001

Source: MDCH Hospitalization files



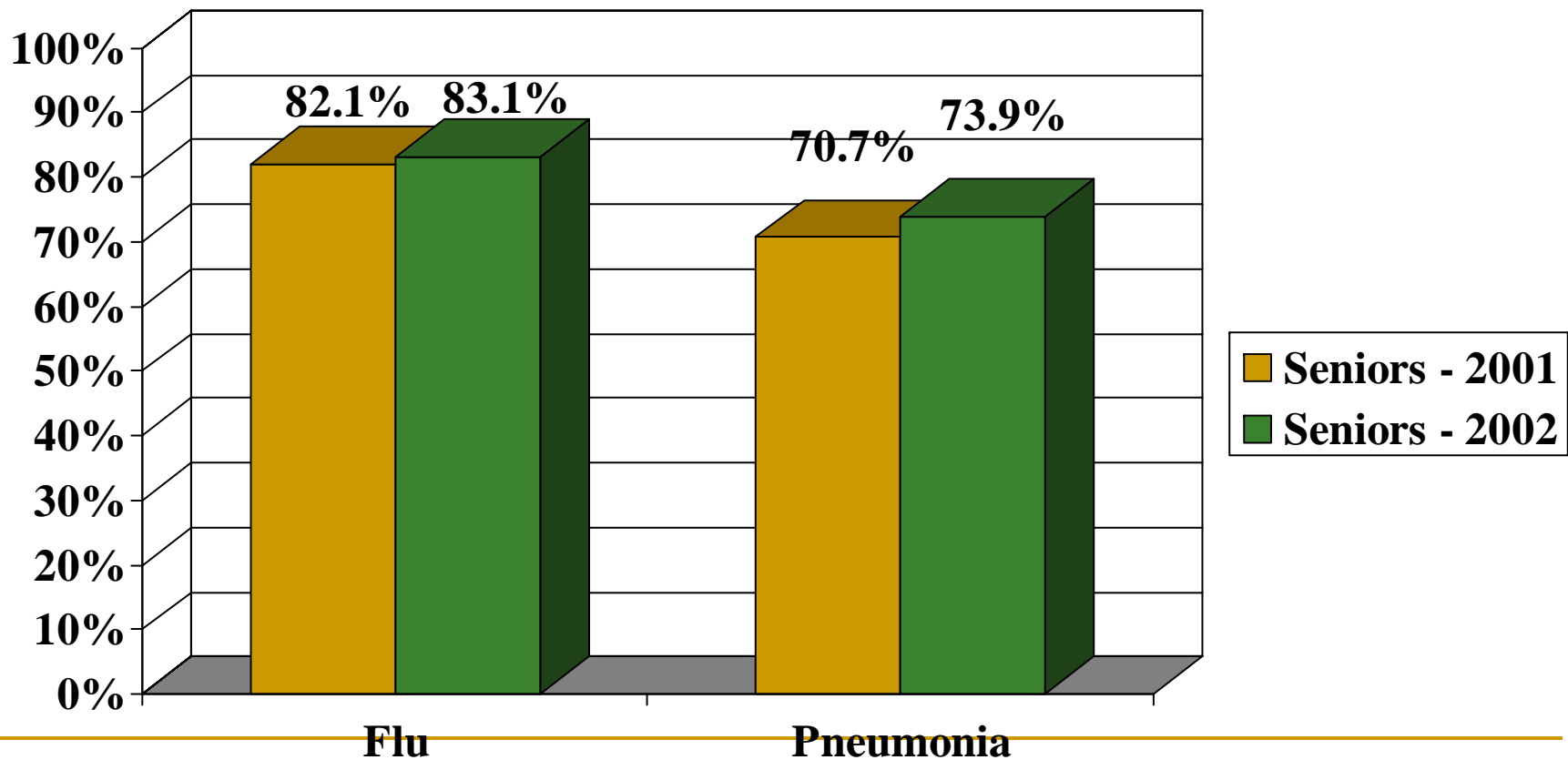
Current smokers – Seniors 65+ Michigan vs. US

Source: Behavioral Risk Factor Surveillance System 2002



Percentage of Hillsdale seniors who ever received a flu or pneumonia shot,

2001 Senior Needs Survey vs. 2002 Senior Needs Survey



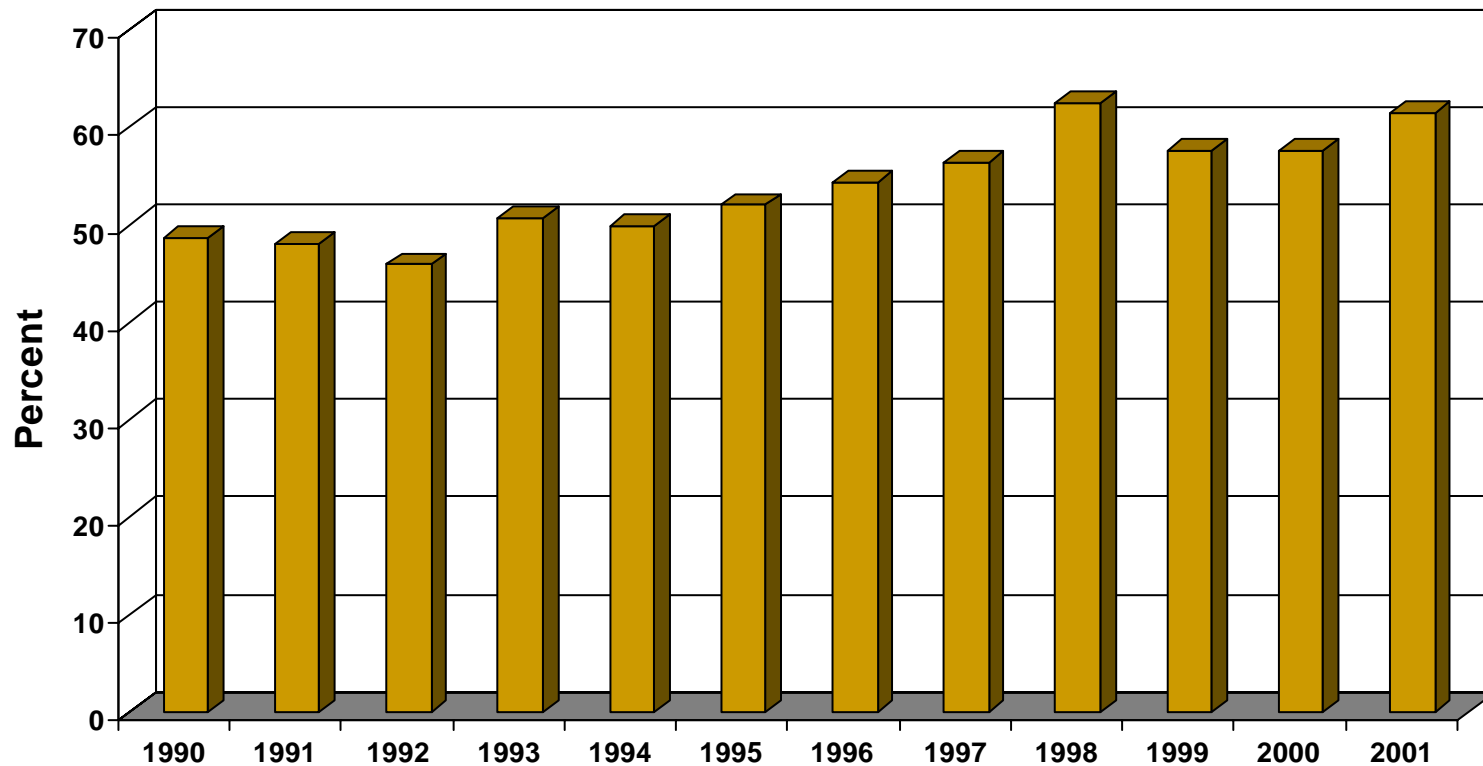
Educational opportunities for Hillsdale County seniors

- Adult Education
- JCC
- Elder Hostel
- Lifelong learning at
Hillsdale County Senior
Services Center
(HCSSC)



Percentage of Hillsdale residents age 65 or older who died and a high school diploma was noted on the death certificate, 1990-2001

Source: MDCH Death File



Number of reports of suspected abuse/neglect and crimes against the elderly in Hillsdale County

Source: Hillsdale FIA Annual Report

	<u>Year</u>	
	99/00	00/01
Number of cases investigated	71	79
Number of referrals substantiated	29	25

In-home services for the elderly in Hillsdale County

Source: Hillsdale County Senior Center

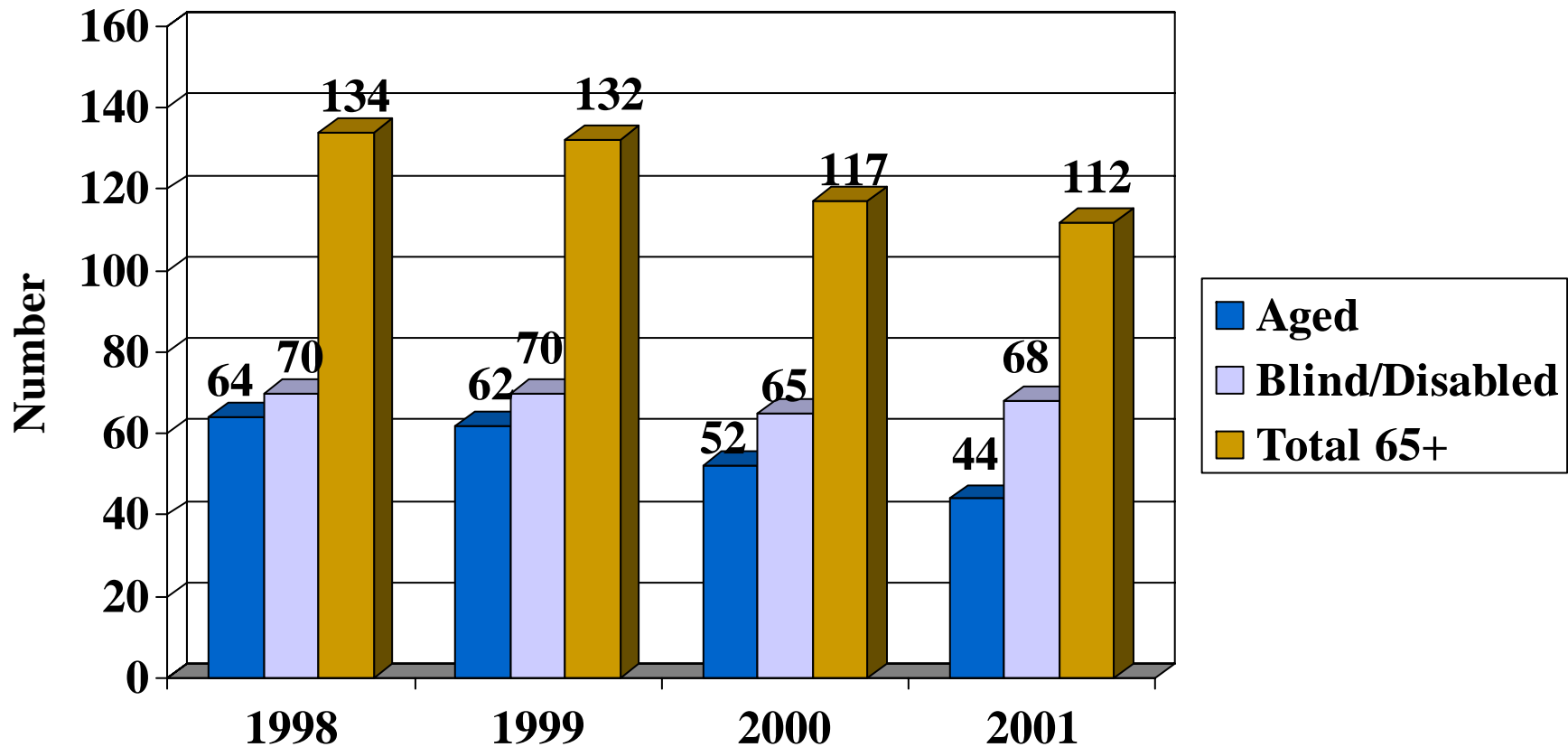
For the period October
2001 through
September 2002
Hillsdale Sr. Center
provided 403
unduplicated in-home
services to seniors in
Hillsdale County



Hillsdale seniors receiving SSI by type of payment-

Total sr. population is approx. 6,200, 112 is 1.8% of that population

Source: US Social Security Administration



Percentage of Hillsdale seniors receiving QMBY and SLMBY

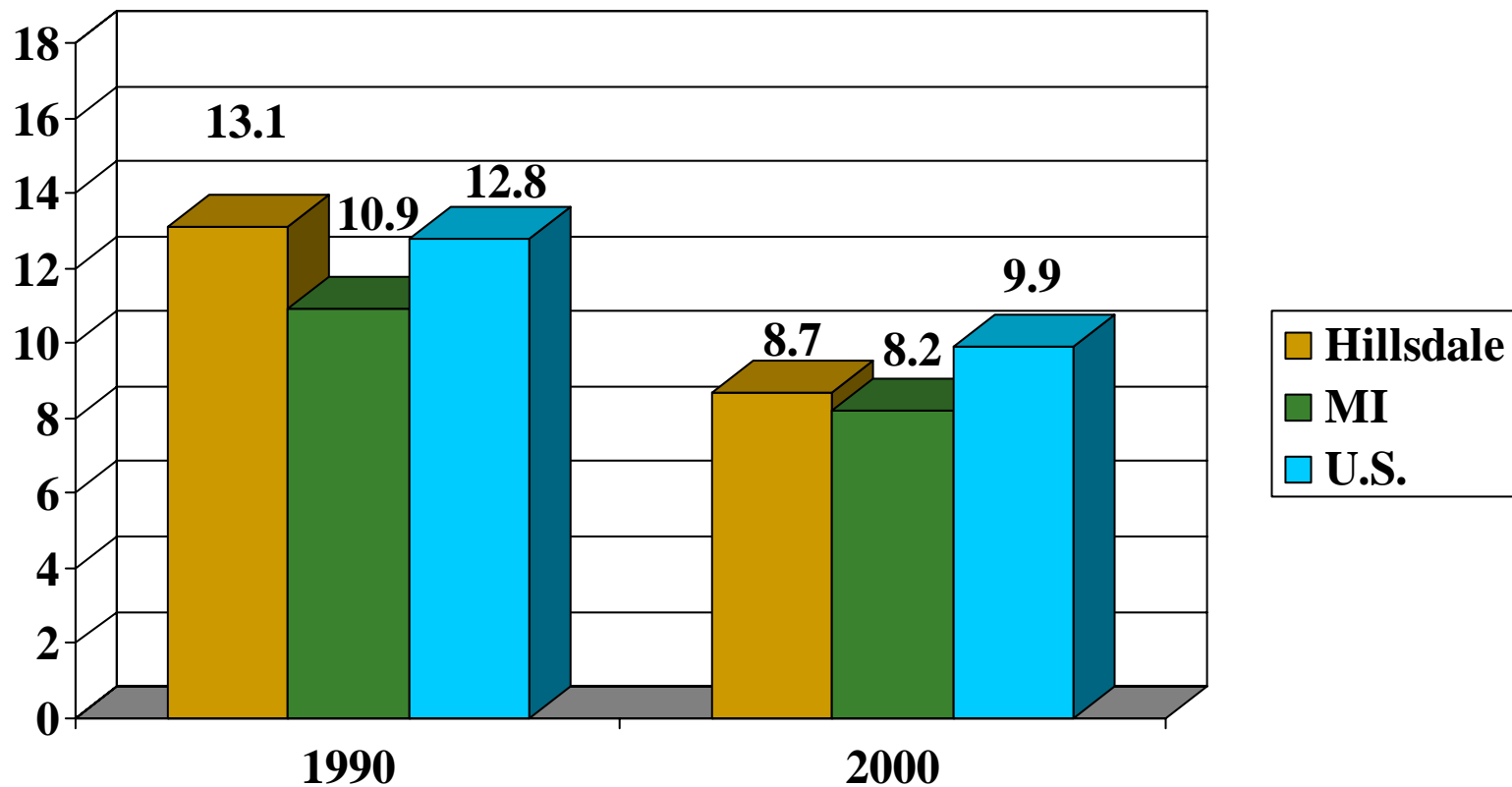
(Medicaid assistance for Medicare premiums)

Source: FIA

As of April 2003 there were 386 seniors in Hillsdale who are receiving Medicaid assistance for their Medicare premiums. This represents approximately 6% of seniors living in Hillsdale County.

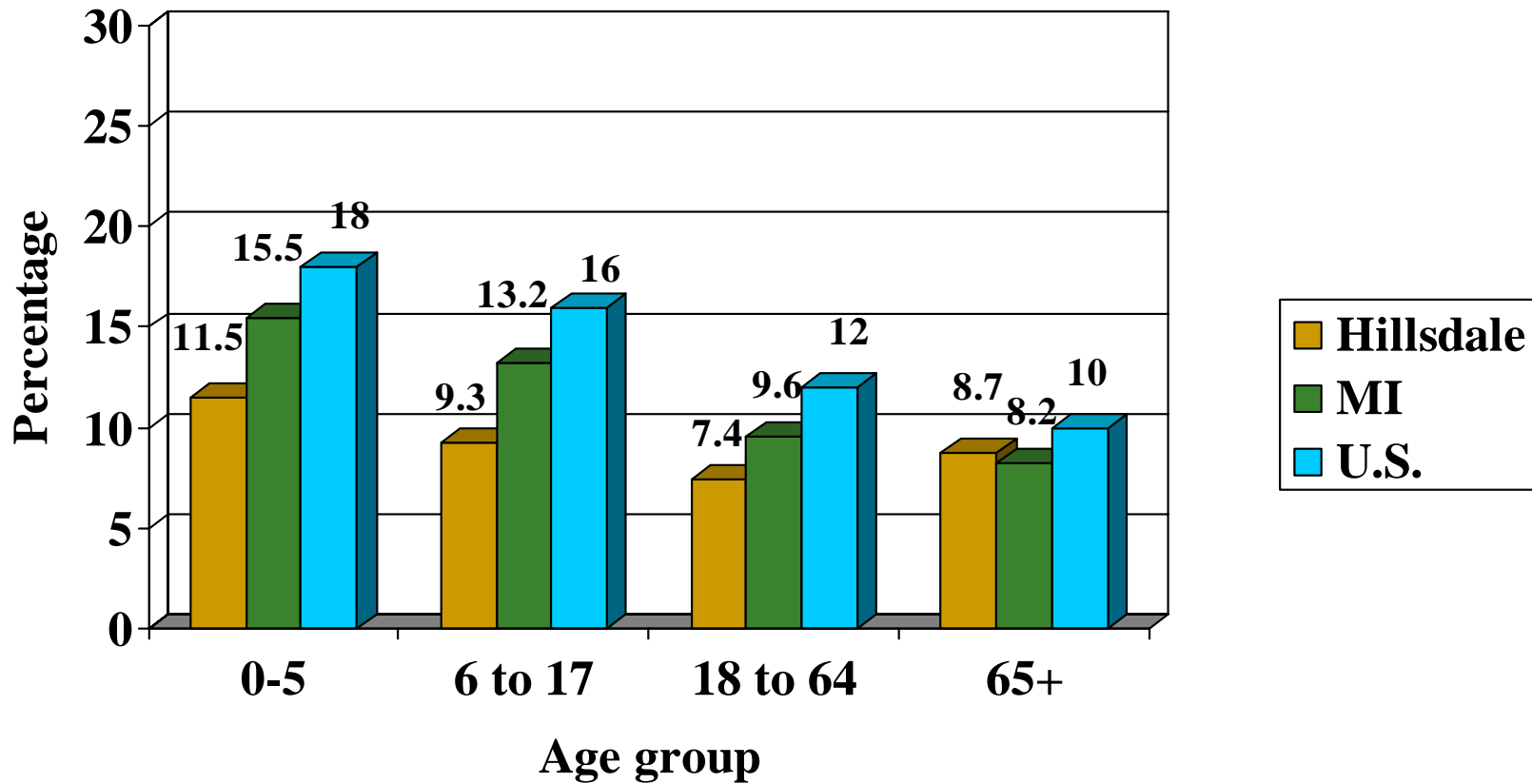
Percentage of Hillsdale seniors, age 65+, in poverty

Source: 1990,2000 U.S. Census

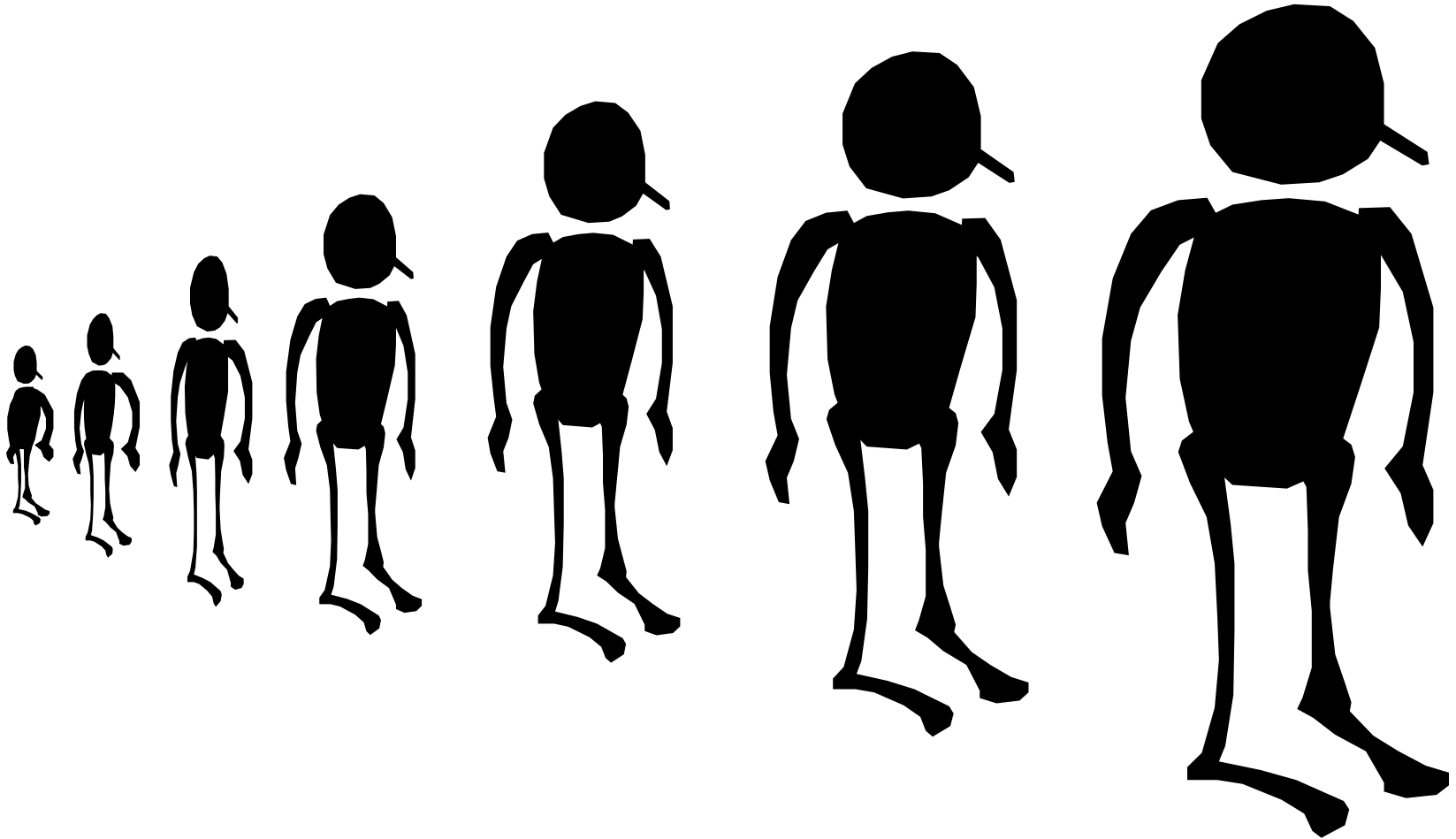


Percent of in poverty by age group in Hillsdale County, 2000

Source: 2000 U.S. Census



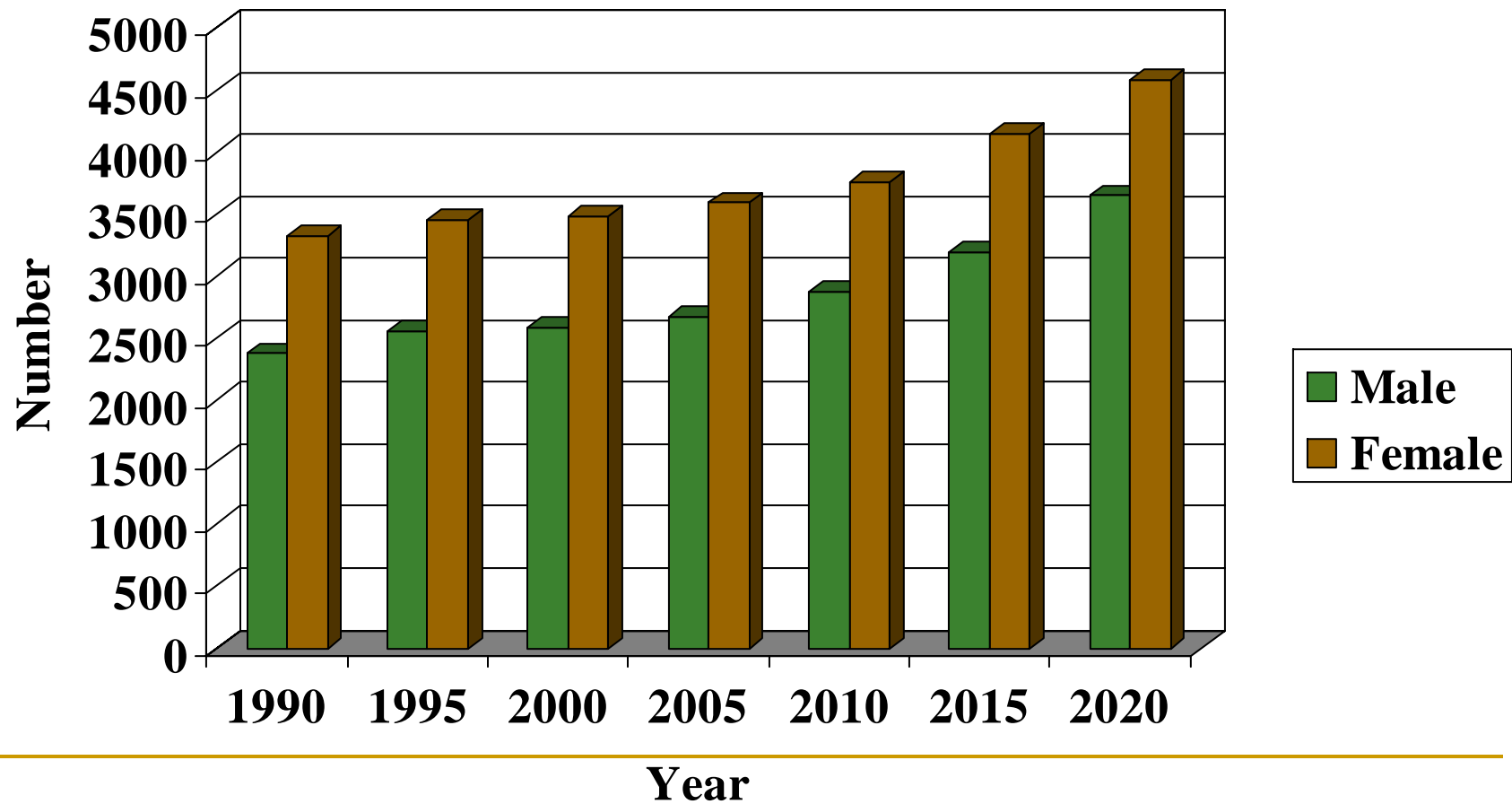
Growing and growing and growing and ...
A population explosion?



Age 65+ population estimates, Hillsdale County

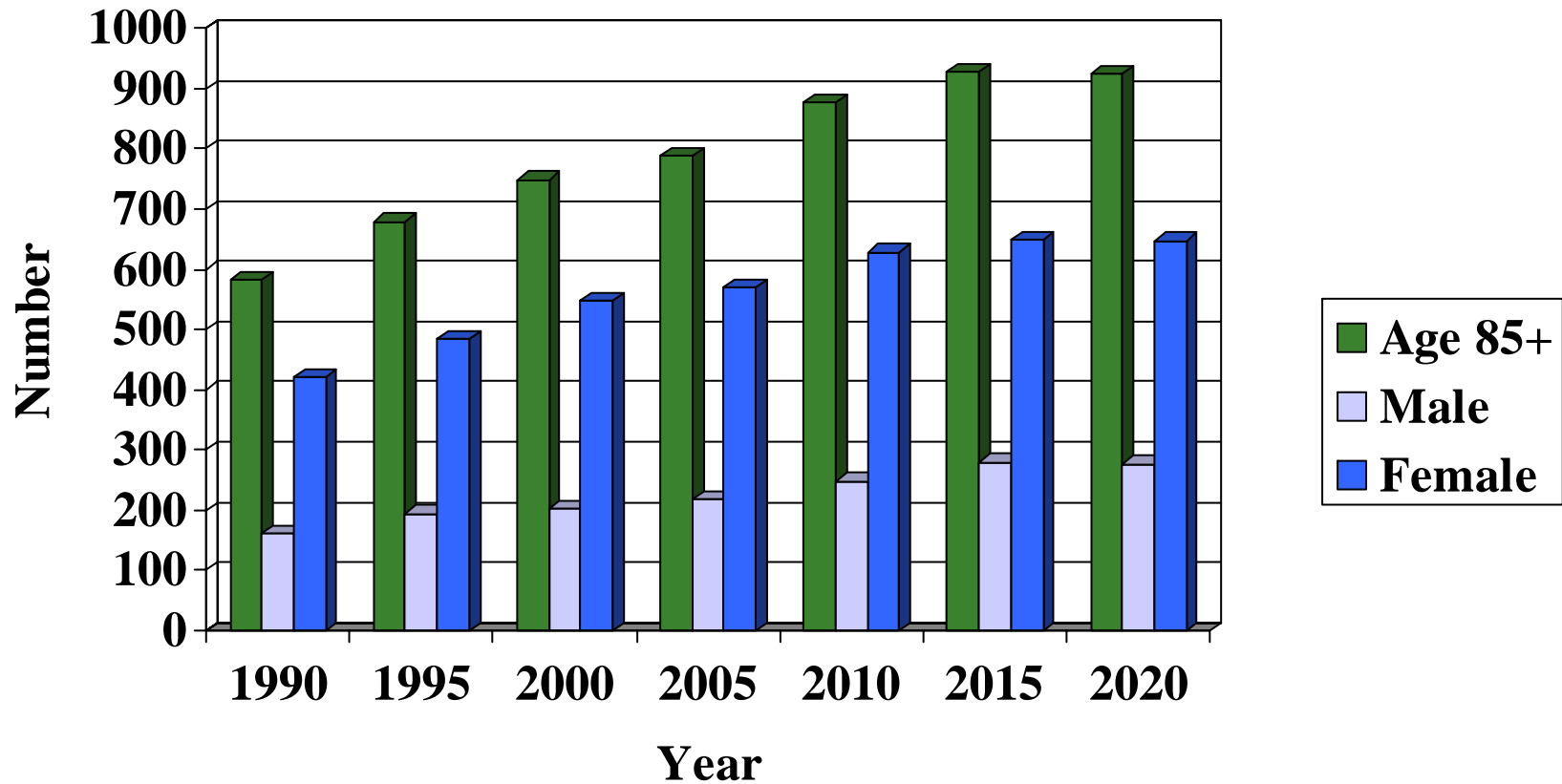
1990-2020, by sex, total

Source: Michigan Information Center



Age 85+ population estimates, Hillsdale County 1990-2020

Source: Michigan Information Center



Finished?

(Step 1 – a look at the data)

- Knowledge is a process of piling up facts; wisdom lies in their simplification.

MARTIN FISCHER
