

The County Health Rankings Project Branch County, Michigan

A Product of the Robert Wood Johnson
Foundation

&

The University of Wisconsin Population
Health Institute



2011

What are the County Health Rankings?

- ✦ The *Rankings* are based on a model of population health that emphasizes the many factors that, if improved, can help make communities healthier places to live, learn, work and play.



Sources of Data

(Alphabet Soup)

- ✦ Centers for Disease Control and Prevention (CDC):
- ✦ Behavioral Risk Factor Surveillance System (BRFSS)
- ✦ National Center for Health Statistics (NCHS)
- ✦ National Center for Chronic Disease Prevention and Health Promotion (Division of Diabetes Translation)
- ✦ National Center for Hepatitis, HIV, STD, and TB Prevention
- ✦ Environmental Protection Agency (EPA)
- ✦ Health Resources and Services Administration (HRSA)
- ✦ Decennial Census
- ✦ American Community Survey (ACS)
- ✦ Census/Current Population Survey: Small Area Health Insurance Estimates and Income and Poverty Estimates, and Census County and Zip Code Business Patterns
- ✦ Federal Bureau of Investigation (FBI)
- ✦ Medicare claims/The Dartmouth Institute
- ✦ National Center for Education Statistics (NCES)
- ✦ Bureau of Labor Statistics (BLS)

What Process was used to select the measures used in the Rankings

- ✦ Review of the literature around the impact of various health factors
- ✦ Ability for factors to be modified
- ✦ Availability and reliability of measures at the county level
- ✦ Analysis and feedback by a panel of technical experts.

Ranking Methods


The County Health Rankings include 2 primary categories

- ◆ Health outcomes (2)
- ◆ Health factors (4)



Health Outcomes

Health outcomes represent how healthy a county is. This report measure two types of health outcomes:

- 
- ✦ Mortality - how long people live
 - ✦ Morbidity - how healthy people feel while alive

Health Outcome Categories - Mortality

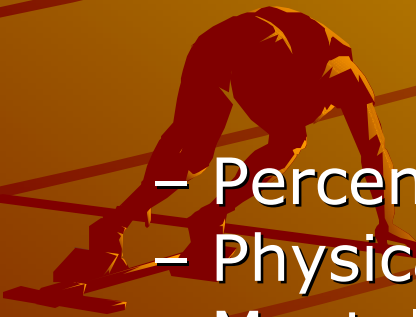
- ✦ Mortality – Measurement Tool- Years of Potential Life Lost (YPLL)
- ✦ Premature death is represented by the years of potential life lost before age 75. Every death occurring before the age of 75 contributes to the total number of years of potential life lost. For example, a person dying at age 25 contributes 50 years of life lost, whereas a person who dies at age 65 contributes 10 years of life lost to a county.
- ✦ Age-adjusting adjusts for variations in population against a standard (US Census)

Health Outcomes - Morbidity

- ✦ Morbidity- refers to how healthy people feel while alive. Specifically the measures of health-related quality of life (overall health, physical health, mental health) and birth outcomes (babies born with a low birth weight). This information is obtained mostly through surveys.

Measurement Tools

- Percent reporting poor or fair health (BRFS)
- Physically unhealthy days (BRFS) / Month
- Mentally unhealthy days (BRFS) / Month
- Low birth weight live births (Birth files)



Health Factors

Health factors represent what influences the health of a county. The Report measure four types of health factors:

- 
- ◆ Health behaviors
 - ◆ Clinical care
 - ◆ Social and economic
 - ◆ Physical environment

Factor # 1 - Health Behaviors

Focus Area

- ✦ Tobacco Use
- ✦ Diet & Exercise
- ✦ Alcohol use
- ✦ Unsafe Sex

Measures

- Adult smoking rate
- Adult obesity rate
- Excessive drinking
- Motor vehicle crash death rate
- Chlamydia rate
- Teen Birth rate

Data sources: BRFSS, MV Reports, NCHS, ACS

Factor # 2 - Clinical Care

Focus Area

✦ Access to care

✦ Quality of Care



Measures

Adult uninsured
Primary Care Providers

Preventable Hospital Stays
Diabetic screening
Mammography Screening

Data Sources: BRFS, NCCDP, HRSA, NCHS

Factor # 3 - Social and Economic

Focus area

- ✦ Education
- ✦ Employment
- ✦ Income
- ✦ Family and Social Supports
- ✦ Community Safety

Measures

Grad. Rate/Some College
Unemployment rate
Children in poverty
Inadequate social support; Single-parent households
Violent crime rates

Data Sources: NCES, BLS, ACS, Census

Factor # 4 - Physical Environment

Focus area

✦ Environmental Quality

Measures

Air pollution particulate matter days; Ozone pollution days

✦ Built Environment

Access to healthy foods;
Access to recreational facilities

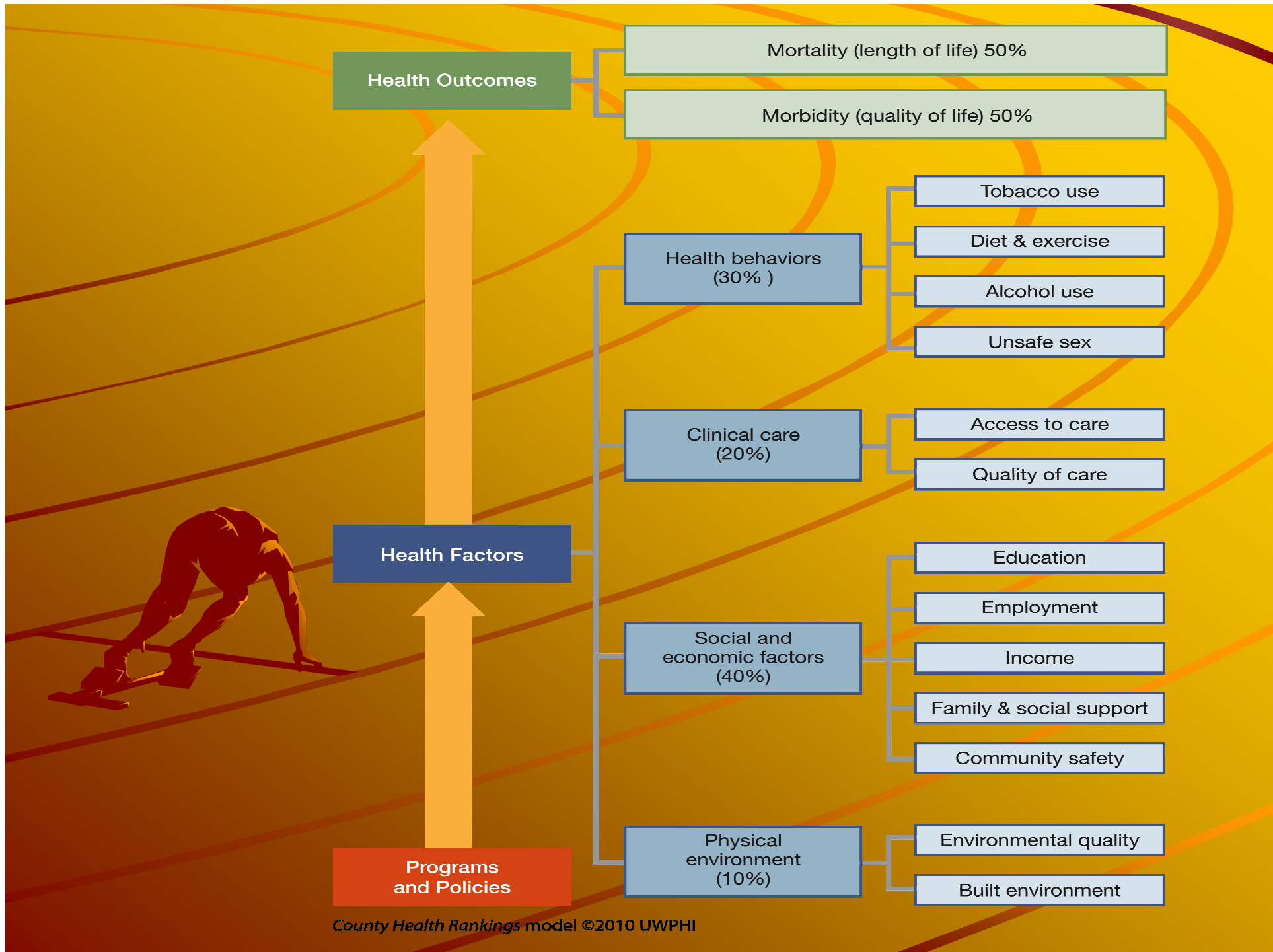
Data Sources: EPA, CDC, US Census



Computing your 'Score'

- ✦ The Rankings are based on summary scores of individual measures.
- ✦ Ranking is based on 82 Counties (Keweenaw not included; pop. 2200)





Summary of Scores

Combined
Rankings
42

📌 Health Outcomes

- Mortality 40/82
- Morbidity 50/82

📌 Health Factors

- Behaviors 43/82
- Clinical Care 80/82
- Social/Economics 44/82
- Physical Environment 55/82

60

Branch County

	County	MI	Rank
Mortality	7,061	7,387	42

Morbidity			50
------------------	--	--	----

Poor/fair health	18%	15%
Poor physical health days	4.7	3.5
Poor mental health days	3.6	3.7
Low Birth weight	6.5%	8.2%

Health Factors			60
-----------------------	--	--	----

Health Behaviors			43
-------------------------	--	--	----

Adult Smoke	21%	22%
Adult Obesity	32%	31%
Binge Drink	13%	19%
MV Crash Death Rate	18	13
Chlamydia Rate	182	446
Teen Birth Rate	53	35



Branch County

Clinical Care

	County	MI	Rank 80
Uninsured Adult	15%	14%	
Primary Care Providers	2,180:1	874:1	
Preventable Hospital Stays	92	74	
Diabetic Screening	81%	83%	
Mammography Screening	58%	69%	



Branch County

	County	MI	Rank
Social & Economic			44
HS Graduation	80%	77%	
Some College	47%	62%	
Unemployment	14.2%	13.6%	
Children in Poverty	21%	19%	
Inadequate Social Support	17%	20%	
Single Parent Households	27%	32%	
Violent Crime Rate	220	536	
Physical Environment			55
Air Pollution Days	2	5	
Ozone Days	0	3	
Access to Healthy Foods	17%	73%	
Access to Recreational Fac.	15	10	

Final Rankings

- ✦ Ranked in 2 summary categories
- ✦ Health Outcomes – How healthy is the County
- ✦ Health Factors – What factors are influencing the health of the County



Health Outcomes Ranking (Mortality, Morbidity)

How do we stack up?

- ◆ 1. Ottawa County
- ◆ 15. Lenawee
- ◆ 30. Ingham
- ◆ 31. Hillsdale
- ◆ 35. Kalamazoo
- ◆ 42. **Branch County**
- ◆ 51. Van Buren
- ◆ 59. Cass
- ◆ 62. Jackson
- ◆ 69. St. Joseph County
- ◆ 73. Calhoun
- ◆ 81. Wayne
- ◆ 82. Clare

Health Factors Ranking


1. Washtenaw
13. Kalamazoo
20. Ingham
22. Lenawee
43. Van Buren
50. Cass
51. Hillsdale
54. St. Joseph County
55. Jackson
60. **Branch County**
67. Calhoun
82. Wayne

Health Factors

A Breakdown of Components

	Health Behavior	Clinical Care	Social Economic	Physical Environ.
Branch	43	80	44	55
Hillsdale	38	52	60	30
St. Joseph	57	61	52	7
Calhoun	76	24	66	39
Jackson	73	29	48	33
Lenawee	25	34	28	58
Cass	52	76	30	50
Kalamazoo	21	16	17	11

Now What?

- ✦ Improving your community's health involves a cycle of activities
 - ✦ Assessing needs and resources,
 - ✦ Picking priorities,
 - ✦ Finding programs and policies that work
 - ✦ Implementing strategies
 - ✦ Evaluating efforts.
- 

Take Action

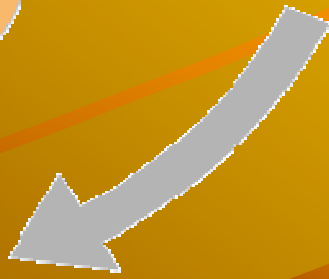
WORK TOGETHER



Assess Needs & Resources

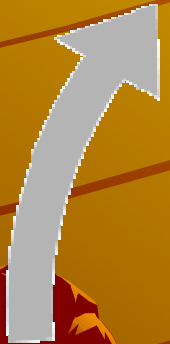


Pick Priorities:

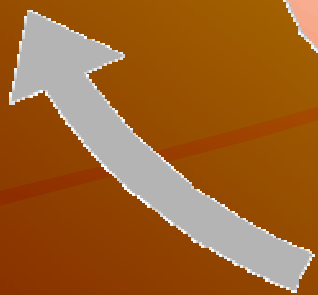


Find Programs & Policies that Work

Evaluate Efforts



Implement Strategies



Strengths/Weaknesses

- ✦ + Wide variety of indicators
- ✦ + Starts Communities Talking

- ✦ - Missing some key indicators

✦ Immunization rates/parks & rec. opportunities/population density/non-violent crime

- ✦ - Some Data is old

- ✦ - Several elements are estimates

📌 Questions?

📌 Follow-up?

