

# The County Health Rankings Project St. Joseph County, Michigan

A Product of the Robert Wood Johnson  
Foundation

&

The University of Wisconsin Population  
Health Institute



**2011**

# What are the County Health Rankings?

- ✦ The *Rankings* are based on a model of population health that emphasizes the many factors that, if improved, can help make communities healthier places to live, learn, work and play.



# Sources of Data

## (Alphabet Soup)

- ✦ Centers for Disease Control and Prevention (CDC):
- ✦ Behavioral Risk Factor Surveillance System (BRFSS)
- ✦ National Center for Health Statistics (NCHS)
- ✦ National Center for Chronic Disease Prevention and Health Promotion (Division of Diabetes Translation)
- ✦ National Center for Hepatitis, HIV, STD, and TB Prevention
- ✦ Environmental Protection Agency (EPA)
- ✦ Health Resources and Services Administration (HRSA)
- ✦ Decennial Census
- ✦ American Community Survey (ACS)
- ✦ Census/Current Population Survey: Small Area Health Insurance Estimates and Income and Poverty Estimates, and Census County and Zip Code Business Patterns
- ✦ Federal Bureau of Investigation (FBI)
- ✦ Medicare claims/The Dartmouth Institute
- ✦ National Center for Education Statistics (NCES)
- ✦ Bureau of Labor Statistics (BLS)

# What Process was used to select the measures used in the Rankings

- ✦ Review of the literature around the impact of various health factors
- ✦ Ability for factors to be modified
- ✦ Availability and reliability of measures at the county level
- ✦ Analysis and feedback by a panel of technical experts.

# Ranking Methods


The County Health Rankings include 2 primary categories

- ◆ Health outcomes (2)
- ◆ Health factors (4)



# Health Outcomes

Health outcomes represent how healthy a county is. This report measure two types of health outcomes:

- 
- ✦ Mortality - how long people live
  - ✦ Morbidity - how healthy people feel while alive

# Health Outcome Categories - Mortality

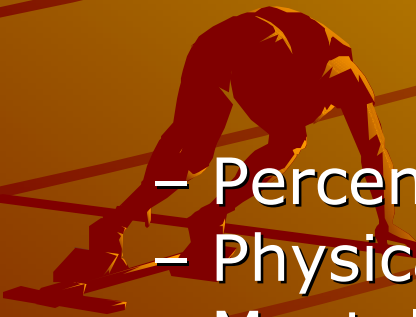
- ✦ Mortality – Measurement Tool- Years of Potential Life Lost (YPLL)
- ✦ Premature death is represented by the years of potential life lost before age 75. Every death occurring before the age of 75 contributes to the total number of years of potential life lost. For example, a person dying at age 25 contributes 50 years of life lost, whereas a person who dies at age 65 contributes 10 years of life lost to a county.
- ✦ Age-adjusting adjusts for variations in population against a standard (US Census)

# Health Outcomes - Morbidity

- ✦ Morbidity- refers to how healthy people feel while alive. Specifically the measures of health-related quality of life (overall health, physical health, mental health) and birth outcomes (babies born with a low birth weight). This information is obtained mostly through surveys.

## Measurement Tools

- Percent reporting poor or fair health (BRFS)
- Physically unhealthy days (BRFS) / Month
- Mentally unhealthy days (BRFS) / Month
- Low birth weight live births (Birth files)






# Health Factors

Health factors represent what influences the health of a county. The Report measure four types of health factors:

- ◆ Health behaviors
- ◆ Clinical care
- ◆ Social and economic
- ◆ Physical environment

# Factor # 1 - Health Behaviors

## Focus Area

- ✦ Tobacco Use
  - ✦ Diet & Exercise
  - ✦ Alcohol use
  - ✦ Unsafe Sex
- 

## Measures

- Adult smoking rate
- Adult obesity rate
- Excessive drinking
- Motor vehicle crash death rate
- Chlamydia rate
- Teen Birth rate

Data sources: BRFSS, MV Reports, NCHS, ACS

# Factor # 2 - Clinical Care

## Focus Area

✦ Access to care

✦ Quality of Care



## Measures

Adult uninsured  
Primary Care Providers

Preventable Hospital Stays  
Diabetic screening  
Mammography Screening

Data Sources: BRFS, NCCDP, HRSA, NCHS

# Factor # 3 - Social and Economic

## Focus area

- ✦ Education
- ✦ Employment
- ✦ Income
- ✦ Family and Social Supports
- ✦ Community Safety

## Measures

Grad. Rate/Some College  
Unemployment rate  
Children in poverty  
Inadequate social support; Single-parent households  
Violent crime rates

Data Sources: NCES, BLS, ACS, Census

# Factor # 4 - Physical Environment

## Focus area

✦ Environmental Quality

## Measures

Air pollution particulate matter days; Ozone pollution days

✦ Built Environment

Access to healthy foods;  
Access to recreational facilities

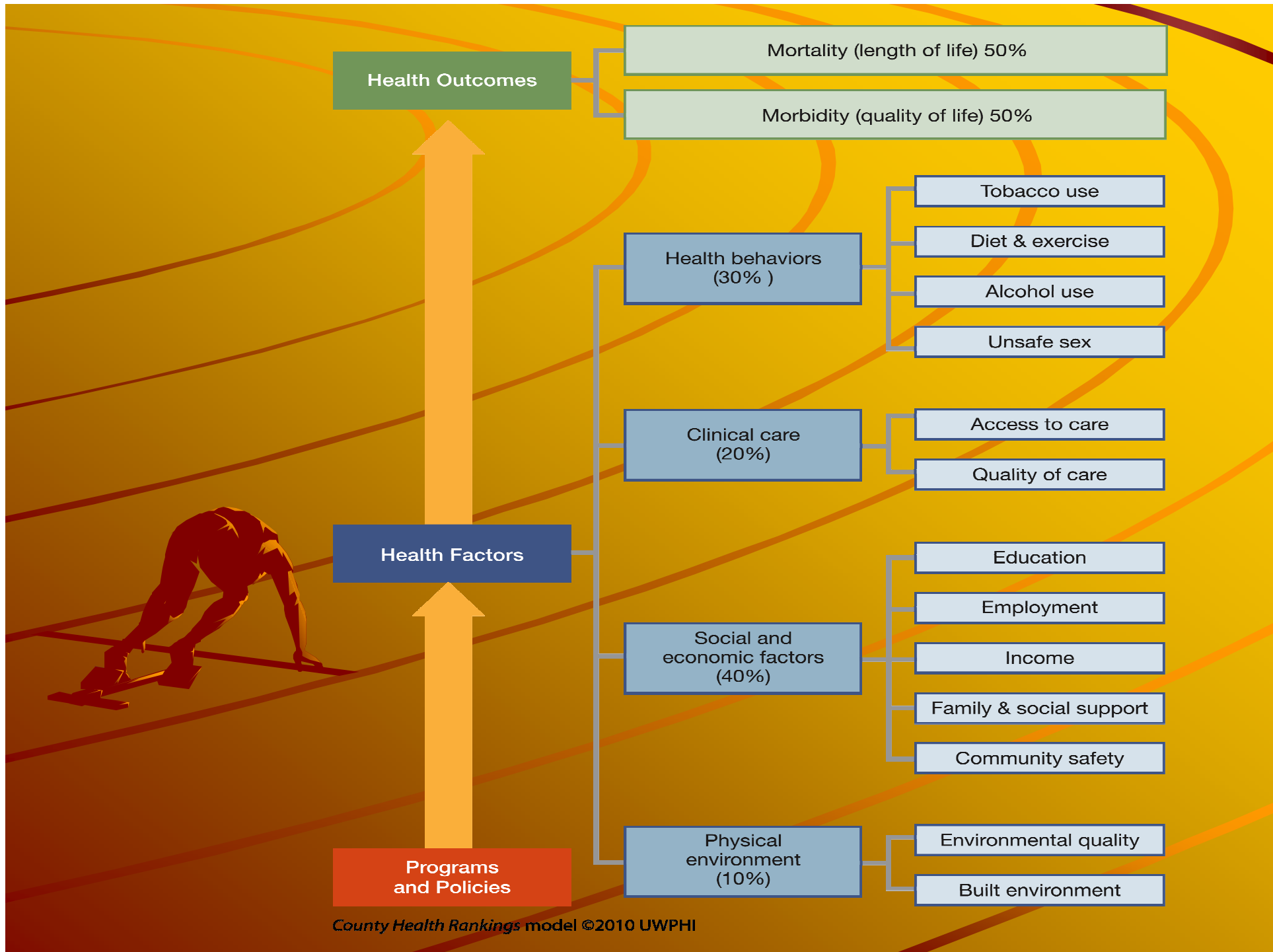
Data Sources: EPA, CDC, US Census



## Computing your 'Score'

- ✦ The Rankings are based on summary scores of individual measures.
- ✦ Ranking is based on 82 Counties (Keweenaw not included; pop. 2200)





# Summary of Scores

Combined  
Rankings  
69

## 📌 Health Outcomes

- Mortality 68/82
- Morbidity 60/82

## 📌 Health Factors

- Behaviors 57/82
- Clinical Care 61/82
- Social/Economics 52/82
- Physical Environment 7/82

54





# St. Joseph County

	County	MI	Rank
<b>Mortality</b>	8,814	7,387	68
<b>Morbidity</b>			60
Poor/fair health	21%	15%	
Poor physical health days	3.8	3.5	
Poor mental health days	3.5	3.7	
Low Birth weight	7.1%	8.2%	
<b>Health Factors</b>			54
<b>Health Behaviors</b>			57
Adult Smoke	25%	22%	
Adult Obesity	30%	31%	
Binge Drink	13%	19%	
MV Crash Death Rate	26	13	
Chlamydia Rate	233	446	
Teen Birth Rate	59	35	



# St. Joseph County

	County	MI	Rank 61
<b>Clinical Care</b>			
Uninsured Adult	15%	14%	
Primary Care Providers	1,198:1	874:1	
Preventable Hospital Stays	82	74	
Diabetic Screening	78%	83%	
Mammography Screening	69%	69%	



# St. Joseph County

	County	MI	Rank
<b>Social &amp; Economic</b>			<b>52</b>
HS Graduation	80%	77%	
Some College	45%	62%	
Unemployment	14.6%	13.6%	
Children in Poverty	21%	19%	
Inadequate Social Support	18%	20%	
Single Parent Households	26%	32%	
Violent Crime Rate	344	536	
<b>Physical Environment</b>			<b>7</b>
Air Pollution Days	2	5	
Ozone Days	0	3	
Access to Healthy Foods	89%	73%	
Access to Recreational Fac.	13	10	



# Final Rankings

- ✦ Ranked in 2 summary categories
- ✦ Health Outcomes – How healthy is the County
- ✦ Health Factors – What factors are influencing the health of the County



# Health Outcomes Ranking (Mortality, Morbidity)

*How do we stack up?*

- ◆ 1. Ottawa County
- ◆ 15. Lenawee
- ◆ 30. Ingham
- ◆ 31. Hillsdale
- ◆ 35. Kalamazoo
- ◆ 42. Branch County
- ◆ 51. Van Buren
- ◆ 59. Cass
- ◆ 62. Jackson
- ◆ 69. **St. Joseph County**
- ◆ 73. Calhoun
- ◆ 81. Wayne
- ◆ 82. Clare

# Health Factors Ranking

1. Washtenaw

13. Kalamazoo

20. Ingham

22. Lenawee

43. Van Buren

50. Cass

51. Hillsdale

54. **St. Joseph County**

55. Jackson

60. Branch County

67. Calhoun

82. Wayne




# Health Factors

## A Breakdown of Components

	Health Behavior	Clinical Care	Social Economic	Physical Environ.
<b>St. Joseph</b>	<b>57</b>	<b>61</b>	<b>52</b>	<b>7</b>
Hillsdale	38	52	60	30
Branch	43	80	44	55
St. Joseph	57	61	52	7
Calhoun	76	24	66	39
Jackson	73	29	48	33
Lenawee	25	34	28	58
Cass	52	76	30	50
Kalamazoo	21	16	17	11

## Now What?

- ✦ Improving your community's health involves a cycle of activities
  - ✦ Assessing needs and resources,
  - ✦ Picking priorities,
  - ✦ Finding programs and policies that work
  - ✦ Implementing strategies
  - ✦ Evaluating efforts.
- 



# Take Action

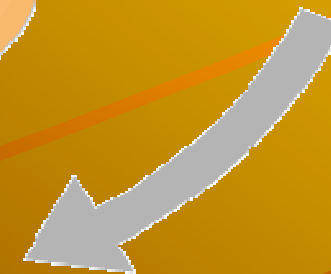
WORK TOGETHER



Assess Needs  
& Resources

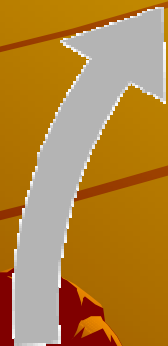


Pick Priorities:

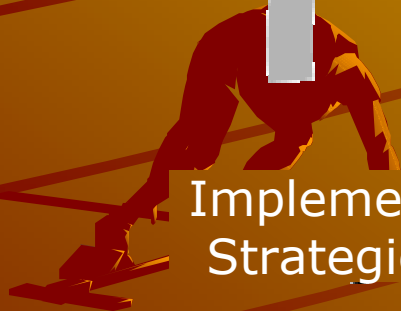
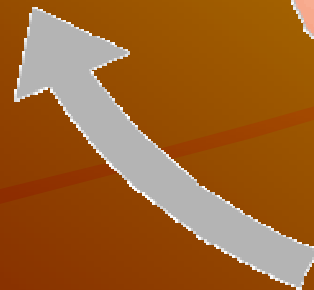


Find Programs  
& Policies that  
Work

Evaluate Efforts



Implement  
Strategies



# Strengths/Weaknesses

- ✦ + Wide variety of indicators
- ✦ + Starts Communities Talking
- ✦ - Missing some key indicators
  - ✦ Immunization rates/parks & rec. opportunities/population density/non-violent crime
- ✦ - Some Data is old
- ✦ - Several elements are estimates

📌 Questions?

📌 Follow-up?

