

The County Health Rankings & Roadmaps St. Joseph County, Michigan

A Product of the Robert Wood Johnson
Foundation

&

The University of Wisconsin Population
Health Institute



2014

What are the County Health Rankings?

- ✦ The *Rankings* are based on a model of population health that emphasizes the many factors that, if improved, can help make communities healthier places to live, learn, work and play.



Sources of Data

- ◆ Centers for Disease Control and Prevention (CDC) Wonder
- ◆ Behavioral Risk Factor Surveillance System (BRFSS)
- ◆ National Center for Health Statistics (NCHS)
- ◆ National Center for Chronic Disease Prevention and Health Promotion (Division of Diabetes Translation)
- ◆ National Center for Hepatitis, HIV, STD, and TB Prevention
- ◆ Health Resources and Services Administration Area Resource File
- ◆ American Community Survey (ACS)
- ◆ Small Area Health Insurance Estimates, Small Area Income and Poverty Estimates,
- ◆ Federal Bureau of Investigation (FBI) Uniform Crime Reporting
- ◆ Medicare/Dartmouth Institute
- ◆ USDA Food Environment Atlas
- ◆ Safe Drinking Water Information
- ◆ HUD/Comprehensive Housing Affordable Strategy (CHAS)
- ◆ Fatality Analysis Reporting System
- ◆ OneSource Global Business Browser, Delorme Map Data, ESRI, & US Census Tigerline Files
- ◆ CMS, National Provider Identification
- ◆ National Center for Education Statistics
- ◆ Bureau of Labor Statistics

What Process was used to select the measures used in the Rankings

- ✦ Review of the literature around the impact of various health factors
- ✦ Ability for factors to be modified
- ✦ Availability and reliability of measures at the county level
- ✦ Analysis and feedback by a panel of technical experts
- ✦ A review of the America's Health Ranking methodology & indicators

Ranking Methods

The County Health Rankings include 2 primary categories

- ◆ Health outcomes (2)
- ◆ Health factors (4)



Health Outcomes

Health outcomes represent how healthy a county is. This report measures two types of health outcomes:

- ✦ Mortality - how long people live
- ✦ Morbidity - how healthy people feel while alive



Health Outcome Categories - Mortality

- ✦ Mortality – Measurement Tool- Years of Potential Life Lost (YPLL)
- ✦ Premature death is represented by the years of potential life lost before age 75. Every death occurring before the age of 75 contributes to the total number of years of potential life lost. For example, a person dying at age 25 contributes 50 years of life lost, whereas a person who dies at age 65 contributes 10 years of life lost to a county.
- ✦ Age-adjusting adjusts for variations in population against a standard (US Census)

Health Outcomes - Morbidity

- ✦ Morbidity- refers to how healthy people feel while alive. Specifically the measures of health-related quality of life (overall health, physical health, mental health) and birth outcomes (babies born with a low birth weight). This information is obtained mostly through surveys.

Measurement Tools

- Percent reporting poor or fair health (BRFS)
- Poor physical health days (BRFS) / Month
- Poor mental health days (BRFS) / Month
- Low birth weight /live births (Birth files)



Health Factors


Health factors represent what influences the health of a county. The Report measure four types of health factors:

- ◆ Health Behaviors
- ◆ Clinical Care
- ◆ Social and Economic
- ◆ Physical Environment



Factor # 1 - Health Behaviors

Focus Area

- ✦ Tobacco Use
 - ✦ Diet & Exercise
 - Food Environment Index
 - Physical Inactivity Rate
 - Access to Exercise
 - ✦ Alcohol use
 - ✦ Sexual Activity
- 

Measures

- Adult Smoking Rate
- Adult Obesity Rate
- Opportunities
- Excessive Drinking
- Alcohol Impaired Driving Deaths
- Sexually Transmitted Infections
- Teen Birth Rate

Data sources: BRFSS, NCHS, NCCDPHP, NCHHSTP, USDA Food Atlas, OneSource Global Business Browser, Delorme map data, ESRI, & US Census Tigerline Files, Fatality Analysis Reporting System

Factor # 2 - Clinical Care

Focus Area

✦ Access to care

✦ Quality of Care



Measures

Adult Uninsured

Primary Care Physicians

Dentists

Mental Health Providers

Preventable Hospital Stays

Diabetic Screening

Mammography Screening

Data Sources: SAHIE, HRSA, Medicare/Dartmouth Atlas, CMS – National Provider Identification

Factor # 3 - Social and Economic

<u>Focus area</u>	<u>Measures</u>
-------------------	-----------------

✦ Education	Grad. Rate
-------------	------------

Some College	
--------------	--

✦ Employment	Unemployment Rate
--------------	-------------------

✦ Income	Children in Poverty
----------	---------------------

✦ Family and Social Supports	Inadequate Social Supports
---------------------------------	----------------------------

	Single-Parent Households
--	--------------------------

✦ Community Safety	Violent Crime Rates
--------------------	---------------------

Injury Deaths	
---------------	--

Data Sources: CEPI, ACS, BLS, SAIPE, BRFSS, ACS, UCR, CDC Wonder

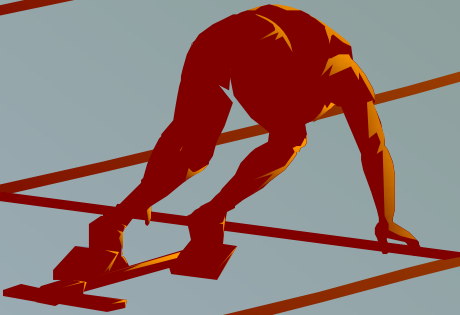
Factor # 4 - Physical Environment

Focus area

✦ Air and Water Quality

Drinking Water Violations

✦ Housing and Transit



Measures

Air pollution – Particulate Matter

Severe Housing Problems

Driving Alone to Work

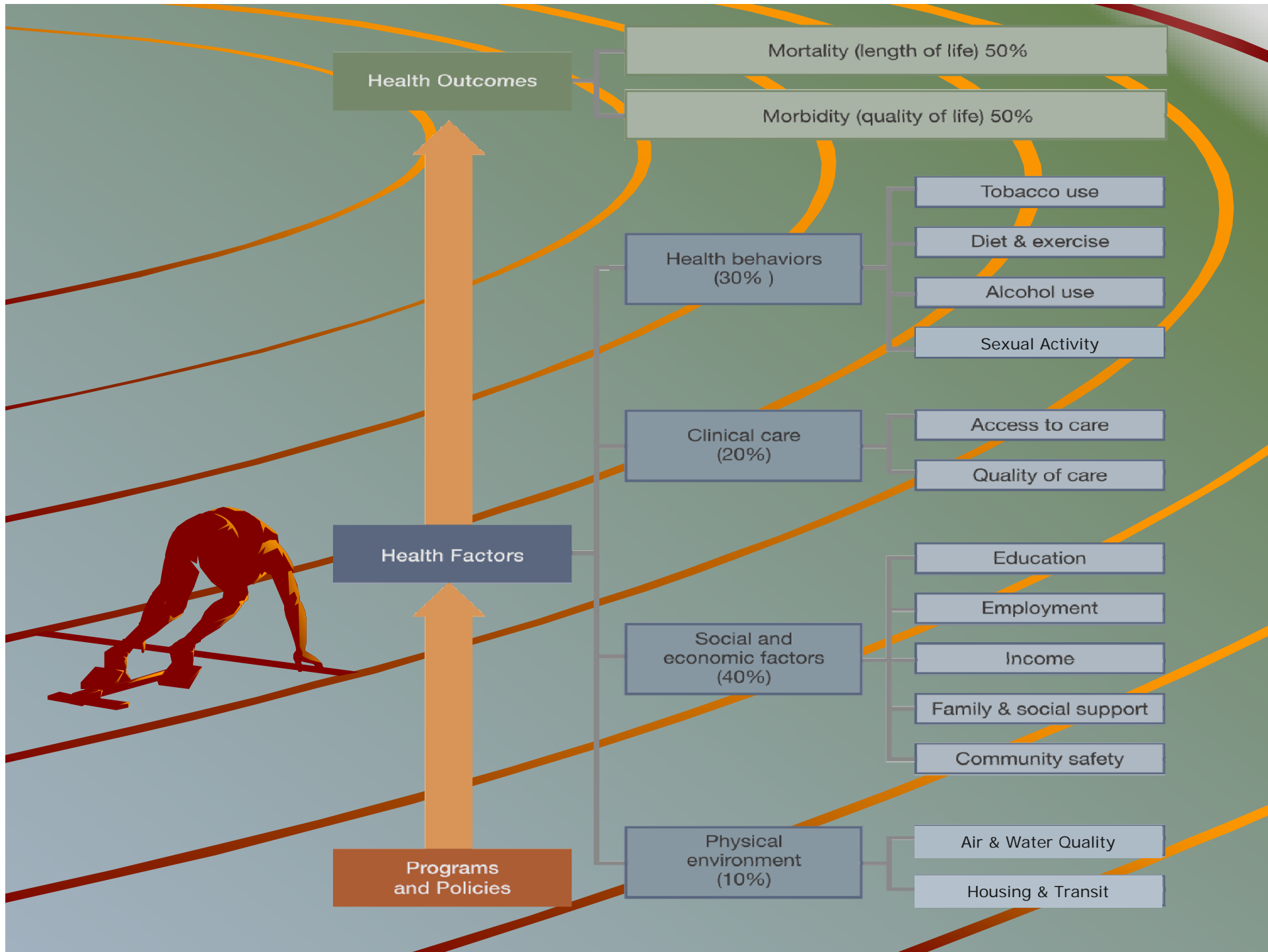
Long Commute – Driving Alone

Data Sources: CDC Wonder, SDWIS, HUD, ACS

Computing your 'Score'

- ✦ The Rankings are based on summary scores of individual measures.
- ✦ Ranking is based on 82 Counties (Keweenaw not included)





Summary of Scores

Combined
Rankings
59

📌 Health Outcomes

- Mortality 65/82
- Morbidity 37/82

📌 Health Factors

- Behaviors 57/82
- Clinical Care 71/82
- Social/Economics 44/82
- Physical Environment 68/82

60

St. Joseph County

	County	MI	Rank
Length of Life		65	
Premature Death		8,1217,254	
Quality of Life		37	
Poor/fair health	18%14%		
Poor physical health days	3.4 3.6		
Poor mental health days	3.03.7		
Low Birth weight	7.1%8.4%		
Health Behaviors		57	
Adult Smoke	22%20%		
Adult Obesity	33%32%		
Food Environment Index	8.0 7.5		
Physical Inactivity	28%24%		
Access to Exercise Opportunities	39%	78%	
Excessive Drinking	18%18%		
Alcohol-Impaired Driving Deaths	42%	31%	
Sexually Transmitted Infections	252 502		
Teen Birth Rate	47 32		

St. Joseph County

	County	MI	Rank
Clinical Care		71	
Uninsured	15%14%		
Primary Care Physicians	2,658:1	1,268:1	
Dentists	2,763:1	1,522:1	
Mental Health Providers	779:1661:1		
Preventable Hospital Stays	78 70		
Diabetic Screening	83%85%		
Mammography Screening	66%65%		

St. Joseph County

County

MI

Rank

Social & Economic Factors

44

High School Graduation**	78%	76%
Some College	47%	65%
Unemployment	8.4%	9.1%
Children in Poverty	28%	25%
Inadequate Social Support	19%	20%
Children in Single-Parent Households	29%	33%
Violent Crime Rate	295	478
Injury Deaths	65	59

Physical Environment

68

Air Pollution – Particulate Matter	12.9	11.5
Drinking Water Violations	6%	1%
Severe Housing Problems	13%	17%
Driving Alone to Work	82%	83%
Long Commute – Driving Alone	32%	32%

Final Rankings

- ✦ Ranked in 2 summary categories

- ✦ Health Outcomes – How healthy is the County

- ✦ Health Factors – What factors are influencing the health of the County



Health Outcomes Ranking (Mortality, Morbidity)

How do we stack up?

1. Ottawa

16. Kent

31. Baraga

33. Ingham

34. Hillsdale County

40. Branch County

43. Kalamazoo

50. Jackson

59. St. Joseph County

61. Berrien

72. Clare

78. Calhoun

82. Wayne

Health Factors Ranking

1. Washtenaw

12. Eaton

20. Barry

25. Isabella

38. Branch County

48. Jackson

50. Hillsdale County

55. Van Buren

59. Cass

60. St. Joseph County

67. Calhoun

76. Clare


82. Wayne

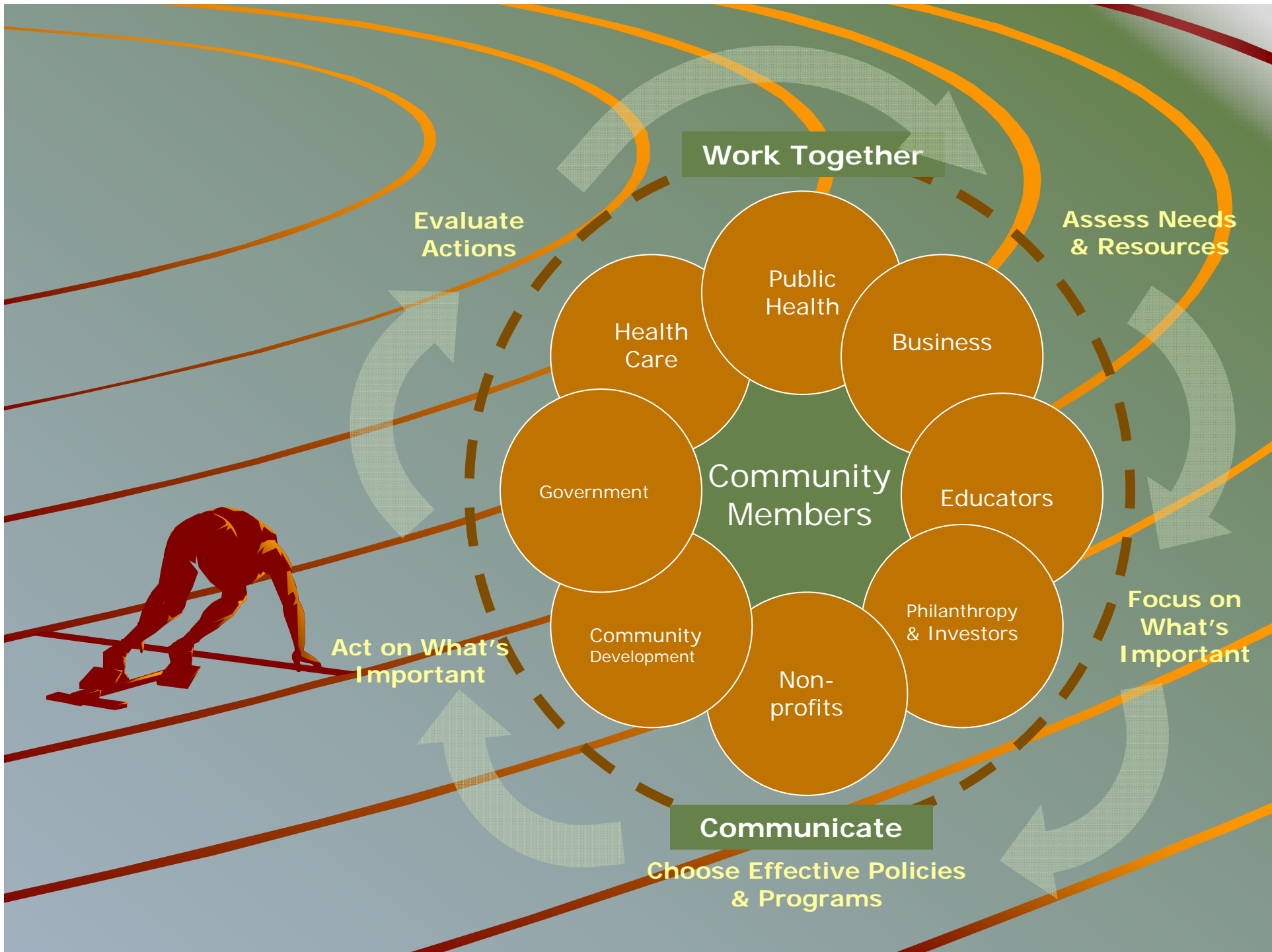
Health Factors

A Breakdown of Components

	Health Behavior	Clinical Care	Social Economic	Physical Environ.
St. Joseph	57	71	44	68
Hillsdale	50	68	45	53
Branch	38	69	35	52
Calhoun	67	40	43	51
Jackson	48	30	46	63
Lenawee	21	33	21	73
Cass	59	79	37	76
Kalamazoo	18	12	20	66

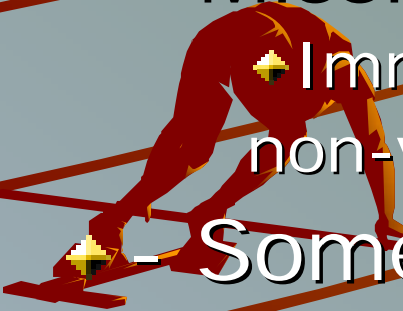
Now What?

- ✦ Improving your community's health involves a cycle of activities
 - ✦ Assessing needs and resources,
 - ✦ Picking priorities,
 - ✦ Finding programs and policies that work
 - ✦ Implementing strategies
 - ✦ Evaluating efforts.
- 



Strengths/Weaknesses

- ✦ + Wide variety of indicators
- ✦ + Starts Communities Talking
- ✦ - Missing some key indicators
 - ✦ Immunization rates/population density/
non-violent crime
- ✦ - Some Data is old
- ✦ - Several elements are estimates



🚦 Questions?

🚦 Follow-up?

