

Branch-Hillsdale-St. Joseph Community Health Agency



“Your Local Health Department”

The mission of the Branch-Hillsdale-St. Joseph Community Health Agency is to provide quality and accessible local health services with fiscal responsibility.

www.bhsj.org

The Branch-Hillsdale-St. Joseph Community Health Agency is an organization that excels in the community in terms of responsiveness, competence and collaboration.

Our Vision

Letter to the Community

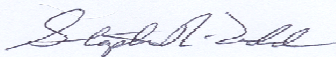
FY 2012/13 was a year of remembrance. During the year, the Branch-Hillsdale-St. Joseph Community Health Agency celebrated its 40th year of public health service as a tri-county health department. As we look back, we found the year to be full of the type of successes one would expect from an agency with 40 years of experience. Our accomplishments included:

- The Healthy Beginning Program, the health agency's evidence-based, early childhood, parent education, and family support home visiting program was recognized by the Michigan Department of Community Health (MDCH) as a recipient of the Director's Award. This program utilizes the Parents as Teachers curriculum and seeks to equip parents with information that helps to increase their understanding of age appropriate expectations and to utilize more positive parenting techniques.
- The Health Agency released its Community Monitor: 100 Indices of Health. This community health assessment companion chartbook was developed with local communities in mind to assist them in planning, monitoring and evaluating their efforts towards improving the health status of local residents.
- The Agency's Medical Director, James Phillips, M.D., was recognized as one of Michigan's three Public Health Policy Champions for 2013, during the Annual Public Health Week Event, held in the Capitol Rotunda. Dr. Phillips, a strong advocate of prevention programming, worked to promote the adoption of expedited partner therapy as a way to curb the spread of sexually transmitted diseases and infections. Locally, he has been very involved in expanding access to walking trails and paths to promote general physical fitness.
- The Agency participated in the Michigan Food Emergency Response Pilot Project. This three-year grant-funded project seeks to assist local health departments in improving their food emergency response plans and policies. It is also designed to assist them with formalizing collaboration between local, state, and federal agencies in order to assure a more timely and effective response to food borne illness outbreaks and emergencies. Within our local agency, it has assisted us with the integration of internal processes shared between the Environmental Health, Communicable Disease and Emergency Preparedness areas.

In addition to the agency celebration of 40 years of work well done, the year was full of thank-yous and good-byes to several of our public health administrators: Dr. James Phillips, Medical Director, Jo Ann Wilczynski, Prevention Services Director, and Donna Cowden, Chief Financial Officer. Their faithful execution of their duties has been appreciated and is missed.

FY 12/13 provided time to reflect on lessons learned and a time to look forward as we rebuild, retool and re-invigorate many of our long-term programs. It is with these thoughts in mind that I present the FY 12/13 Annual Report.

Sincerely,



Stephen R. Todd, MPA, RS
Health Officer/Administrator

ROBIN BAKER, St. Joseph County
BRAD BENZING, Chair Hillsdale County
DALE SWIFT Branch County
RODNEY OLNEY Branch County
MARK WILEY Hillsdale County
ALLEN BALOG Vice Chair St. Joseph County

Administrative Staff

STEPHEN TODD, MPA, RS Health Officer
JAMES PHILLIPS, MD Medical Director
REBECCA BURNS, MPH, RS Environmental Health Director
JOANN WILCZYNSKI, MS, RN Prevention Services Director
THERESA CHRISTNER, MA Health Promotions & Education Director
DONNA COWDEN Chief Financial Officer
MAUREEN PETZKO, BA Director of Operations

Branch-Hillsdale-St. Joseph Community Health Agency

County Health Profiles

Profile (2012)

| | Branch County | Hillsdale County | St. Joseph County | Michigan |
|---------------------------|---------------|------------------|-------------------|-----------|
| Population | 43,868 | 46,229 | 60,796 | 9,883,360 |
| Marriage | 282 | 330 | 441 | 56,315 |
| Divorce | 181 | 222 | 255 | 32,808 |
| % of Population 65+ Years | 15.8% | 16.8% | 15.7% | 14.6% |

Leading Causes of Death — Age Adjusted Rates per 100,000 (2010 - 2012)

| | Branch County | Hillsdale County | St. Joseph County | Michigan |
|------------------------------------|---------------|------------------|-------------------|----------|
| Heart Disease | 206.8 | 215.8 | 228.9 | 200.9 |
| Cancer | 171.3 | 183.7 | 186.6 | 178.1 |
| Chronic Lower Respiratory Diseases | 69.2 | 62.9 | 55.8 | 45.5 |
| Stroke | 47.8 | 37.7 | 44.2 | 38.4 |
| Unintentional Injuries | 37.1 | 47.4 | 39.2 | 36.7 |
| Diabetes Mellitus | 39.9 | 20.1 | 34.8 | 23.7 |
| Alzheimer's Disease | ** | ** | ** | 24.7 |
| Kidney | ** | ** | ** | 14.3 |
| Pneumonia & Influenza | 17.9 | 15.2 | 16.8 | 14.0 |
| Suicide | ** | ** | ** | 12.4 |

Maternal/Infant Health Indicators (2012)

| | Branch County | Hillsdale County | St. Joseph County | Michigan |
|--|---------------|------------------|-------------------|----------|
| Total Births | 490 | 499 | 728 | 112,708 |
| Number of Teen Births (15-19) | 44 | 49 | 88 | 8,893 |
| Teen Pregnancy Rate (per 1,000 births) | 54.2 | 49.0 | 46.1 | 45.5 |
| % Low Birth Weight | 6.3% | 6.8% | 9.6% | 8.5% |
| % Very Low Birth Weight | 1.4% | ** | 1.2% | 1.6% |
| % Inadequate Prenatal Care—Kessner Index | 7.6% | 9.0% | 9.9% | 8.3% |
| Infant Mortality Rates per 1,000 (2010 -12*) | 7.8 | 3.7 | 7.4 | 6.9 |

Economic Indicators (2012)

| | Branch County | Hillsdale County | St. Joseph County | Michigan |
|---|---------------|------------------|-------------------|----------|
| % Unemployment (Annual Rate - Not Seasonally Adjusted) | 8.6% | 9.7% | 8.5% | 9.1% |
| Median Household Income (2010-12) | \$40,438 | \$41,260 | \$42,677 | \$47,175 |
| % Children Receiving Free & Reduced-Lunch (185% of Poverty and Below) | 58.4% | 56.1% | 59.4% | 48.2% |

**Rate does not meet standards of precision or reliability

Public Health is... Prevention, Protection, Promotion...

ENVIRONMENTAL HEALTH

*On-Site Sewage

Reviews sites proposed for sewage disposal, issuance and/or denial of permits, sewage disposal evaluation, inspection, investigation and enforcement.

| | <u>2012</u> | <u>2013</u> |
|--------------------------|-------------|-------------|
| Well/Septic Evaluations | 14 | 27 |
| Construction Permits | 319 | 394 |
| Septic Systems Inspected | 270 | 323 |
| Vacant Land Evaluations | 15 | 21 |

*Private and Public Water Supply

These programs are designed to assure both the proper installation of residential water wells and the monitoring and regulating of Type II water supplies to assure safe useable groundwater.

| | <u>2012</u> | <u>2013</u> |
|----------------------------------|-------------|-------------|
| Well Construction Permits Issued | 472 | 485 |
| Well Permits Inspected | 411 | 447 |
| New Water Supplies Approved | 286 | 340 |
| Non-community Water Supply | 35 | 55 |

*Food Protection

This program provides a systematic approach to minimize the risk of food-borne illness and to ensure that food meets consumer expectations through application of statewide standards for all establishments where food is prepared and/or served to the public.

| | <u>2012</u> | <u>2013</u> |
|-------------------------------------|-------------|-------------|
| Establishment Inspections | 980 | 967 |
| Plans Reviewed | 28 | 16 |
| Vending Inspections | 85 | 89 |
| Temporary Establishment Inspections | 250 | 282 |

HEALTH PROMOTION

Health Education

Educational presentations include: Contraception, Sexually Transmitted Diseases, HIV/AIDS, Nutrition Education and other general health information.

| | <u>2012</u> | <u>2013</u> |
|---------------------------|-------------|-------------|
| Community Events | 64 | 42 |
| Educational Presentations | 47 | 41 |

Safe Kids Coalition

Safe Kids Worldwide is the first and only global organization dedicated solely to the prevention of accidental childhood injury - the number one killer of children ages 14 and under.

| | <u>2012</u> | <u>2013</u> |
|-----------------------------|-------------|-------------|
| Safe Kids Events | 40 | 26 |
| Bicycle Helmets Distributed | 45 | 175 |
| Car Seats Checked | 483 | 635 |

Tobacco Reduction Action Coalition (TRAC)

TRAC seeks to improve the health of the people of Branch, Hillsdale and St. Joseph Counties by encouraging the elimination or reduction of tobacco use.

| | <u>2012</u> | <u>2013</u> |
|--------------------------------|-------------|-------------|
| Community Events/Presentations | 29 | 46 |
| Policy Assistance To Schools | 1 | 27 |

Children's Special Health Care Services

This county-based program helps pay for specialized medical treatment for children and some adults with chronic and severe medical conditions.

| | <u>2012</u> | <u>2013</u> |
|----------------------------|-------------|-------------|
| Individuals Enrolled | 665 | 692 |
| Assessments | 985 | 917 |
| Referrals for Medical Care | 17 | 20 |

*School Age Hearing and Vision Screenings

Provides periodic hearing and vision screening to children from age three through high school.

| | <u>2012</u> | <u>2013</u> |
|-----------------------------|-------------|-------------|
| Hearing Screening Performed | 6,969 | 7,108 |
| Vision Screenings Performed | 13,126 | 13,255 |

PREVENTION SERVICES

*Communicable Disease Prevention & Control

Provides Public Health Code compliance regarding prevention, investigation, and control of defined communicable diseases, including tuberculosis, sexually transmitted diseases (STDs), HIV/AIDS, animal bites and many other infectious diseases.

| | <u>2012</u> | <u>2013</u> |
|--------------------------------------|-------------|-------------|
| Infectious Diseases Reported | 12,615 | 14,116 |
| STD Testing & Contact follow-up | 388 | 284 |
| HIV/AIDS Testing & Contact follow up | 93 | 111 |

Healthy Beginnings (Hillsdale County)

Healthy Beginnings is a free programs for families with children 0-5 years old. Provides answers to parenting questions and provides information and ideas about child development.

| <i>Hillsdale County</i> | <u>2012</u> | <u>2013</u> |
|------------------------------|-------------|-------------|
| Parenting Class Participants | 248 | 309 |
| Home Based Services | 518 | 561 |

*Essential Local Public Health Services

through Core Public Health Services

*Immunizations

Services that provide immunizations for vaccine-preventable diseases for children and adults. Includes collaboration and assistance with health providers in the Vaccine for Children Program and use of the Michigan Care Improvement Registry.

| | <u>2012</u> | <u>2013</u> |
|-----------------------|-------------|-------------|
| Children Vaccinated | 8,863 | 7,521 |
| Adults Vaccinated | 5,028 | 4,184 |
| Travel Vaccines Given | 161 | 250 |
| Total Vaccines Given | 14,384 | 12,192 |

Women, Infants & Children (WIC)

A nutrition and educational program directed toward increasing healthy outcomes for pregnant and breast-feeding woman, infants and children up to 5 years of age.

| | <u>2012</u> | <u>2013</u> |
|-------------------------------|-------------|-------------|
| Average Monthly Participation | 5,880 | 5,475 |

WIC Peer Breastfeeding Support Program

A peer counselor program for WIC participants that provides mother-to-mother support to encourage breastfeeding.

| | <u>2012</u> | <u>2013</u> |
|---|-------------|-------------|
| Number of pregnant and breastfeeding women in class | 249 | 288 |



Area
Agency on
Aging (III-C)
Branch-St. Joseph

AREA AGENCY ON AGING

Our mission is to provide a full range of high quality services, programs and opportunities which promote the independence and dignity of older adults while supporting those who care for them throughout Branch and St. Joseph Counties.

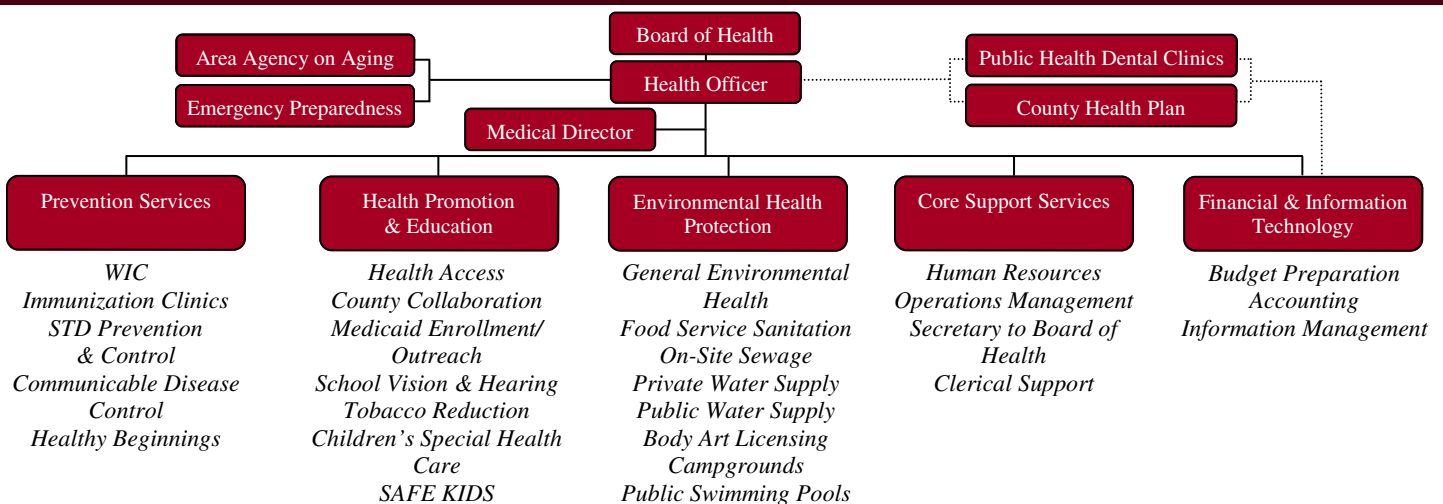
*Essential Local Public Health Services

Program and Partnership Highlights:

- **Creating Confident Caregivers** utilizes the Savvy Caregiver Program, a university-tested program for family members caring for loved a one with memory loss or dementia at home. Our Social Worker Care Consultant and community partner, Blue Skies Adult Day Services, held three classes and shared information and assisted with skills development in 17 families so that they can more effectively manage stress and improve care for loved ones.
- **Elder Abuse Prevention & Awareness** activities occurred throughout 2013 including the release of the Branch County Vulnerable Adult Protocol by the Branch County Elder Abuse Taskforce. Key leaders also arranged for an intense one-day law enforcement training in Branch County. The Taskforce continues its work under the name of the Branch County Elder Abuse Prevention Coalition. Both Branch and St. Joseph Counties hold prevention awareness efforts as a high priority.
- **Community Living program (CLP)** emphasizes a person-centered approach, care planning and monitoring to help people remain as independent as possible in their own home and community. Every two years the program conducts a satisfaction survey. Results from the survey indicate that respondents felt that their care consultant respected them, their wishes and lifestyle choices.

| <u>Service</u> | <u>Total</u> | <u>Units</u> |
|---------------------------|--------------|--------------------|
| Operations | \$79,627 | |
| Nutrition | \$400,987 | 206,188 |
| In-Home | \$170,474 | 63,041 |
| Community | \$78,265 | 28,230 |
| Access | \$155,076 | 40,306 |
| Legal | \$9,000 | 236 |
| Populations Served | | |
| Non-Minority | 3,107 | Native American 12 |
| Rural | 3,138 | Hispanic 53 |
| Under Poverty-level | 580 | Asian/Pacific 5 |
| Minority Poverty | 63 | Multiracial 410 |
| African American | 81 | |

Organizational Chart



Office Directory

Coldwater (517) 279-9561
570 N. Marshall Road
Coldwater, MI 49036

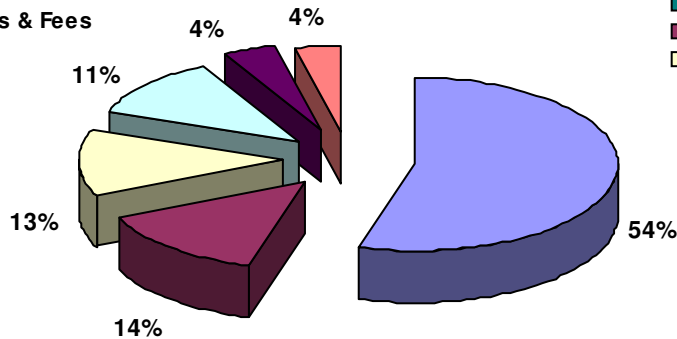
Hillsdale (517) 437-7395
20 Care Drive
Hillsdale, MI 49242

Three Rivers (269) 273-2161
1110 Hill Street
Three Rivers, MI 49093

Fiscal Year 2012/13 Total Annual Budget Based on Actuals = \$6,000,892

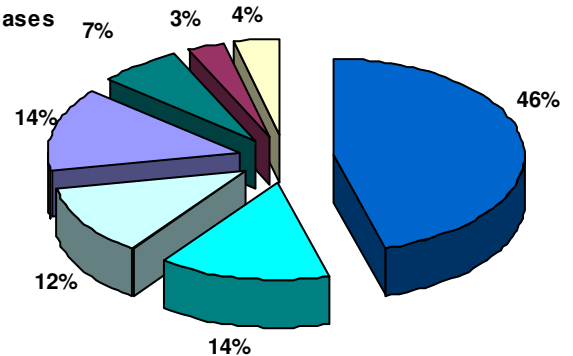
Total Revenues 2012/13

- State & Federal Grants
- State ELPHS
- County Appropriations
- Charges for Services
- Licenses & Fees
- Other



Total Expenditures 2012/13

- Salaries and Wages
- Fringe Benefits
- Supplies and Materials
- Contractual
- Rental & Leases
- Travel
- Other



What's new on the web...www.bhsj.org

[Publications & Reports](#)

Increases community awareness of health issues through press releases or the creation of special reports on selected health topics.

[Health Data and Statistics](#)

County specific data on communicable diseases, motor vehicle data, birth data, hospitalization data and more.

[Downloads](#)

All forms are Adobe Acrobat files and therefore require [Adobe Acrobat Reader](#) to view/print them.

[Current Clinic & Program Calendars](#)

Current calendars that show dates and times of clinic services and Parent Education programs.

[Communicable Disease Data](#)

Up-to-date tracking of the most common communicable diseases, including: chicken pox, flu, head lice, hepatitis and tuberculosis.

[Employment Opportunities](#)

Available job opportunities within the Branch-Hillsdale- St. Joseph Community Health Agency and other Public Health organizations in Michigan.

[Branch County Substance Abuse Task Force](#)

The task force provides up-to-date education services to Branch County to help ensure "Branch County is a meth watch county".

The purpose of this task force is to prevent the manufacture, sale and use of methamphetamine.

[Marketplace Information](#)

Provides a direct link to the government-sponsored health insurance marketplace, as well as to its related tools. Allows individuals who do not receive employer-based health insurance through their workplace to seek affordable health care.

[Healthy Michigan Plan](#)

Expands Medicaid to single adults between the ages of 18 and 64 years who have incomes up to 133% of poverty. For a single person, this means an annual income up to \$16,000. For a family of four, it means an annual income up to \$33,000.

[Dental Clinics](#)

Designed to serve Medicaid patients, including those with MICHild and Healthy Kids Dental. Also for patients that are uninsured and who financially qualify for the Michigan Community Dental Plan. Clients who are on WIC or Food Stamps are automatically qualified.