

# Branch-Hillsdale-St. Joseph Community Health Agency



**“Your Local Health Department”**

*The mission of the Branch-Hillsdale-St. Joseph Community Health Agency is to provide quality and accessible local health services with fiscal responsibility.*

**[www.bhsj.org](http://www.bhsj.org)**

*Annual Report 2011/12*

*The Branch-Hillsdale-St. Joseph Community Health Agency is an organization that excels in the community in terms of responsiveness, competence and collaboration.*

*Our Vision*

## Letter to the Community

FY 2011/12 was a year of many accomplishments for the Branch-Hillsdale-St. Joseph Community Health Agency. Highlights for FY 2011/12 include the following:

- The Health Agency was the recipient of the Michigan Department of Community Health's (MDCH) Director's Award for Project SLIC (Saving Lives of Infants and Children). Project SLIC is a traffic safety program which uses certified car seat technicians to instruct parents on how to safely install their car seats into their vehicles. The program also provides a car seat free of charge to income eligible families who cannot afford one.
- The Health Agency became a Maternal Infant Health Program (MIHP) provider for Hillsdale County. MIHP is a MDCH infant mortality initiative designed to improve prenatal and infant care for women and infants receiving Medicaid insurance.
- Staff members were involved in investigating an outbreak of Cryptosporidium among area firefighters that responded to a Branch County dairy farm fire. The impact of the outbreak required the involvement of multiple health jurisdictions and state health departments and the Centers for Disease Control. The outbreak was successfully resolved and was featured as a breakout session at MDCH's 12th Annual Communicable Disease Conference. An article about the outbreak was also published in two national journals: the Journal of the American Medical Association (JAMA) and the CDC's Morbidity/Mortality Weekly Review (MMWR).
- The Health Agency successfully completed the Michigan Local Public Health Accreditation Program's site evaluation for Cycle 5 which was conducted by the Michigan Departments of Community Health, Rural and Agricultural Development and Environmental Quality. The Agency met all 123 applicable essential indicators and 13 important indicators and has been designated as fully accredited agency with commendation.

The Community Health Agency is very proud of this year's accomplishments. By receiving accreditation with commendation, our agency joins an elite group of county health departments who have been recognized for their high quality clinic, health education and environmental health services. On behalf of the agency staff and its administrative team, I would like to thank the Board of Health for their ongoing support and guidance; and I would also like to express my deepest gratitude to the Agency staff members for their hard work and perseverance. It is my sincere pleasure to present the FY 2011/12 Branch-Hillsdale-St. Joseph Community Health Agency's Annual Report.



Stephen R. Todd, MPA, RS  
Health Officer/Administrator

**ROBIN BAKER, Chair** St. Joseph County

**BRAD BENZING, Vice Chair** Hillsdale County

**DALE SWIFT** Branch County

**RODNEY OLNEY** Branch County

**ALAN RINGENBERG** Hillsdale County

**ALLEN BALOG** St. Joseph County

**GERALD LOUDENSLAGER** St. Joseph County

### **Administrative Staff**

**STEPHEN TODD, MPA, RS** Health Officer

**JAMES PHILLIPS, MD, MPH** Medical Director

**REBECCA BURNS, MPH, RS** Environmental Health Director

**JOANN WILCZYNSKI, MS, RN** Prevention Services Director

**THERESA CHRISTNER, MA** Health Promotions & Education Director

**DONNA COWDEN** Chief Financial Officer

**MAUREEN PETZKO, BA** Director of Operations

# Branch-Hillsdale-St. Joseph Community Health Agency

## County Health Profiles

### Profile (2011)

	Branch County	Hillsdale County	St. Joseph County	Michigan
Population 2011	45,197	46,514	61,136	9,876,187
Marriage 2011	229	252	451	56,159
Divorce 2011	188	222	318	33,940
% of Population 65+ Years 2011	15.1%	16.1%	15.2%	14.1%

### Leading Causes of Death — Age Adjusted Rates per 100,000 (2010\*)

	Branch County	Hillsdale County	St. Joseph County	Michigan
Heart Disease	193.4	228.0	235.1	203.5
Cancer	187.7	186.9	216.9	182.4
Chronic Lower Respiratory Diseases	44.7	43.8	48.8	45.5
Stroke	47.0	39.2	31.9	39.4
Unintentional Injuries	**	60.4	44.1	36.1
Diabetes Mellitus	46.3	**	35.7	23.9
Alzheimer's Disease	49.4	**	**	23.9
Kidney	**	**	**	15.3
Pneumonia & Influenza	**	**	**	13.5
Suicide	**	**	**	12.5

### Maternal/Infant Health Indicators (2011)

	Branch County	Hillsdale County	St. Joseph County	Michigan
Total Births	514	549	884	114,159
Number of Teen Births (15-19)	51	62	70	9,655
Teen Pregnancy Rate (per 1,000 births)	52.1	47.7	43.8	44.4
% Low Birth Weight	7.2	8.0	7.7	8.4
% Very Low Birth Weight	1.9	**	0.9	1.6
% Inadequate Prenatal Care—Kessner Index	10.9	7.1	8.1	8.4
Infant Mortality Rates per 1,000 (2008-10*)	5.5	3.7	10.4	7.3

### Economic Indicators (2011)

	Branch County	Hillsdale County	St. Joseph County	Michigan
% Unemployment (Annual Rate - Not Seasonally Adjusted)	10.0%	11.1%	10.3%	10.4%
Median Household Income	\$40,462	\$41,030	\$40,796	\$45,931
% Children Receiving Free & Reduced-Lunch (185% of Poverty and Below)	58.3%	55.7%	60.9%	48.1%

\*2011 data was not available at time of release

\*\*Rate does not meet standards of precision or reliability

# Public Health is... Prevention, Protection, Promotion...

## ENVIRONMENTAL HEALTH

### \*On-Site Sewage

Reviews sites proposed for sewage disposal, issuance and/or denial of permits, sewage disposal evaluation, inspection, investigation and enforcement.

	<u>2011</u>	<u>2012</u>
Well/Septic Evaluations	20	14
Construction Permits	333	319
Septic Systems Inspected	285	270
Vacant Land Evaluations	19	15

### \*Private and Public Water Supply

These programs are designed to assure both the proper installation of residential water wells and the monitoring and regulating of Type II water supplies to assure safe useable groundwater.

	<u>2011</u>	<u>2012</u>
Well Construction Permits Issued	464	472
Well Permits Inspected	420	411
New Water Supplies Approved	284	286
Non-community Water Supply	44	35

### \*Food Protection

This program provides a systematic approach to minimize the risk of food-borne illness and to ensure that food meets consumer expectations through application of statewide standards for all establishments where food is prepared and/or served to the public.

	<u>2011</u>	<u>2012</u>
Establishment Inspections	955	980
Plans Reviewed	23	28
Vending Inspections	86	85
Temporary Establishment Inspections	267	250

## HEALTH PROMOTION

### Health Education

Educational presentations include: Contraception, Sexually Transmitted Diseases, HIV/AIDS, Nutrition Education and other general health information.

	<u>2011</u>	<u>2012</u>
Community Events	46	64
Educational Presentations	51	47

### Safe Kids Coalition

Safe Kids Worldwide is a global organization dedicated solely to the prevention of accidental childhood injury - the number one killer of children ages 14 and under.

	<u>2011</u>	<u>2012</u>
Safe Kids Events	19	40
Bike Helmets Distributed	300	45
Car Seats Checked	243	483

\*Essential Local Public Health Services

### Tobacco Reduction Action Coalition (TRAC)

TRAC seeks to improve the health of the people of Branch and Hillsdale Counties by encouraging the elimination or reduction of tobacco use.

	<u>2011</u>	<u>2012</u>
Community Events/Presentations	22	29
Workshop/Quitline Participants	441	117

### Children's Special Health Care Services

This county-based program helps pay for specialized medical treatment for children and some adults with chronic, and severe medical conditions.

	<u>2011</u>	<u>2012</u>
Individuals Enrolled	651	665
Assessments	775	985
Referrals for Medical Care	25	17

### \*School Age Hearing and Vision Screenings

Provides periodic hearing and vision screening to children from age three through high school.

	<u>2011</u>	<u>2012</u>
Hearing Screening Performed	6,969	7,012
Vision Screenings Performed	13,126	12,622

## PREVENTION SERVICES

### \*Communicable Disease Prevention & Control

Provides Public Health Code compliance regarding prevention, investigation and control of defined communicable diseases, including tuberculosis, sexually transmitted diseases (STDs), HIV/AIDS, animal bites and many other infectious diseases.

	<u>2011</u>	<u>2012</u>
Infectious Diseases Reported	13,758	12,615
STD Testing & Contact follow-up	470	388
HIV/AIDS Testing & Contact follow up	135	93

### Healthy Beginnings (Hillsdale County)

Healthy Beginnings and Family Success are free programs for families with children 0-5 years old. Provides answers to parenting questions and provides information and ideas about child development.

<i>Hillsdale County</i>	<u>2011</u>	<u>2012</u>
Parenting Class Participants	229	248
Home Based Services	595	518

### \*Immunizations

Services that provide immunizations for vaccine-preventable diseases for children and adults. Includes collaboration and assistance with health providers in the Vaccine for Children Program and use of the Michigan Care Improvement Registry.

# through Core Public Health Services

	2011	2012
Children Vaccinated	10,866	8,863
Adults Vaccinated	6,895	5,028
Travel Vaccines Given	171	161
Total Vaccines Given	17,932	14,384

## Maternal/Infant Health Program (Hillsdale County)

MIHP is a home visiting program offered through the health department for pregnant women and their infants with Medicaid insurance. Program started July, 2012.

	2012
Total Clients Enrolled (July to Sept.)	67

## Women, Infants & Children (WIC)

A nutrition and educational program directed toward increasing healthy outcomes for pregnant and breast-feeding woman, infants and children up to 5 years of age.

	2011	2012
Average Monthly Enrollment	6,076	5,968

## WIC Peer Breastfeeding Support Program

A peer counselor program for WIC participants that provides mother-to-mother support to encourage breastfeeding.

	2011	2012
Number of pregnant and breastfeeding women in class.	210	249



Area  
Agency on  
Aging (III-C)  
Branch-St. Joseph

## AREA AGENCY ON AGING

### Branch-St. Joseph Area Agency on Aging (III C)

Our mission is to provide a full range of high quality services, programs and opportunities which promote the independence and dignity of older adults while supporting those who care for them throughout Branch and St. Joseph Counties.

## Program and Partnership Highlights:

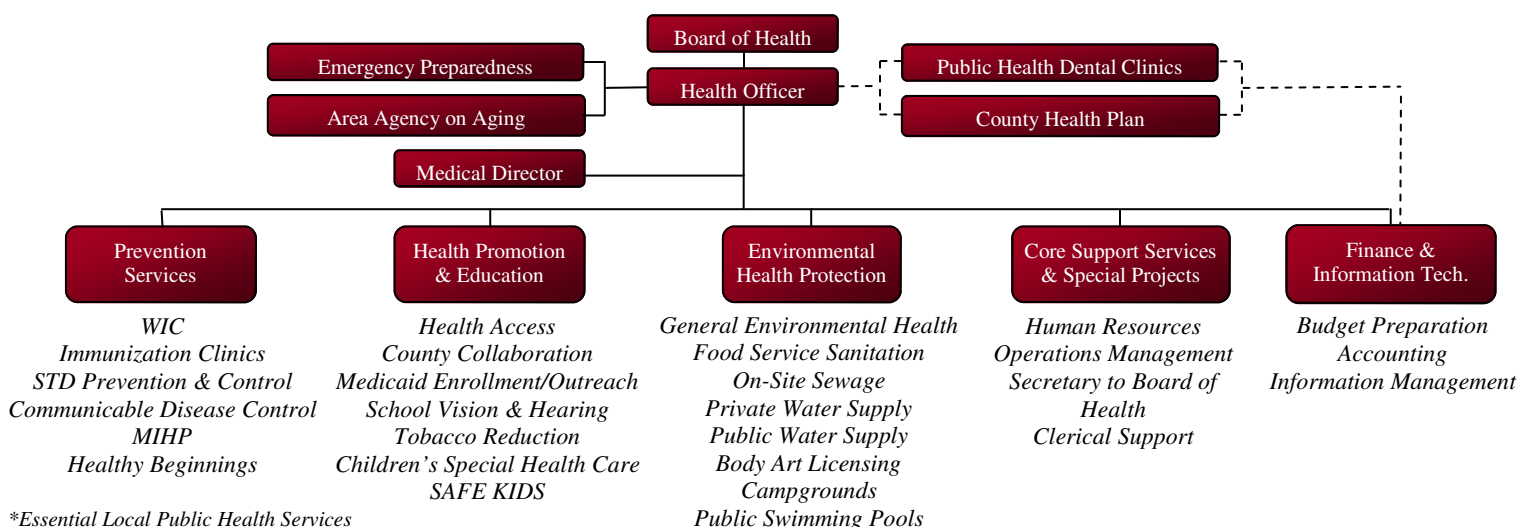
- Creating Confident Caregivers** Caregivers utilizes the Savvy Caregiver Program, a university-tested program for family members caring for a loved one with memory loss or showing signs of dementia. The special grant funding ended in FY12, having served nearly 80 families, thirty of whom were veterans. The information, skills, and attitudes they learned helped them more effectively manage stress and better care for their loved ones. Because of the popularity of this program, plans are in place to continue it.
- Elder Abuse Prevention & Awareness** activities occurred throughout 2012, including the collaborative start-up of the Branch County Elder Abuse Taskforce. Key leaders including law enforcement, Commission on Aging, Community Health Center, Coalition Against Domestic Violence, Pines Behavioral Health, Prosecutor's Office, and the Probate Court were all involved. Progress was made in developing the Branch County Vulnerable Adult Protocol and elder abuse training for law enforcement. Advocacy efforts with the Michigan Legislature resulted in the passage of multiple elder abuse bills, aimed at improving current state laws, addressing penalties and better protecting vulnerable people.

Service	Total	Units
Operations	\$84,308	
Nutrition	\$472,928	171,338
In-Home	\$145,786	43,477
Community	\$59,876	24,545
Access	\$152,865	20,190
Legal	\$9,000	225

### Populations Served

Non-Minority	4,860	Native American	12
Rural	5,187	Hispanic	13
Under Poverty-level	506	Asian/Pacific	6
Minority Poverty	50	Multiracial	335
African American	112		

## Organizational Chart



# Office Directory

Coldwater (517) 279-9561  
570 N. Marshall Road  
Coldwater, MI 49036

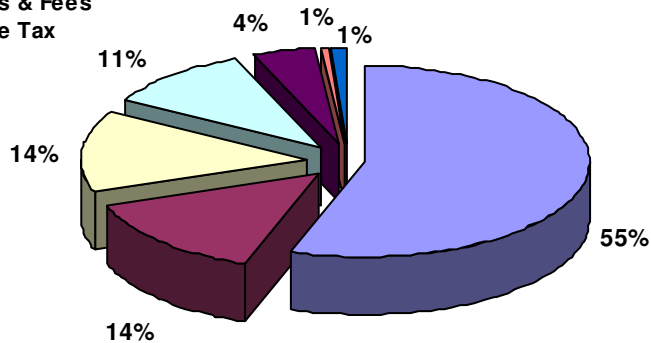
Hillsdale (517) 437-7395  
20 Care Drive  
Hillsdale, MI 49242

Three Rivers (269) 273-2161  
1110 Hill Street  
Three Rivers, MI 49093

## Fiscal Year 2011/12 Total Budget \$5,991,536

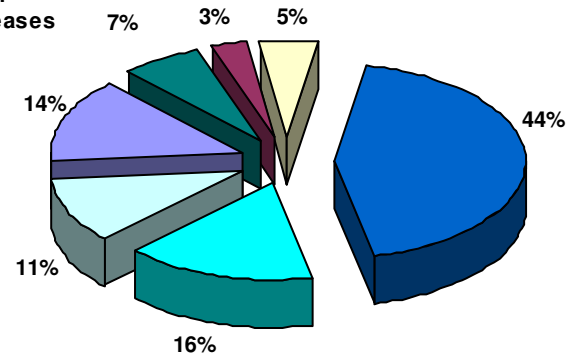
### Total Revenues 2011/12

- State & Federal Grants
- State ELPHS
- County Appropriations
- Charges for Services
- Licenses & Fees
- Cigarette Tax
- Other



### Total Expenditures 2011/12

- Salaries and Wages
- Fringe Benefits
- Supplies and Materials
- Contractual
- Rental & Leases
- Travel
- Other



## What's new on the web...[www.bhsj.org](http://www.bhsj.org)

### [Publications & Reports](#)

Increases community awareness of health issues through press releases or the creation of special reports on selected health topics.

### [Health Data and Statistics](#)

County specific data on communicable diseases, motor vehicle data, birth data, hospitalization data and more.

### [Downloads](#)

All forms are Adobe Acrobat files and therefore require [Adobe Acrobat Reader](#) to view/print them.

### [Current Clinic & Program Calendars](#)

Current calendars that show dates and times of clinic services and parent education programs.

### [Communicable Disease Data](#)

Up-to-date tracking of the most common communicable diseases. Including: chicken pox, flu, head lice, hepatitis and tuberculosis.

### [Employment Opportunities](#)

Available job opportunities within the Branch-Hillsdale- St. Joseph Community Health Agency and other Public Health positions in Michigan.

### [Branch County Substance Abuse Task Force](#)

The task force provides up-to-date education services to Branch County to help ensure "Branch County is a meth watch county".

The purpose of this task force is to prevent methamphetamine manufacture, sale and use.

### [County Health Plan](#)

Residents of Branch, Hillsdale, and St. Joseph counties eligible for the Adult Benefits Waiver (ABW) program are enrolled in the Branch-Hillsdale-St. Joseph Health Plan A. This is NOT insurance but provides health benefits to low income, uninsured residents.

### [Prescription Discount Program](#)

Residents who do not have prescription coverage may be eligible for the Branch-Hillsdale-St. Joseph Prescription Program. This program is a way for people without prescription coverage to purchase prescription drugs at lower prices through their pharmacy.

### [Dental Clinics](#)

Designed to serve Medicaid patients, including those with MICHild and Healthy Kids Dental, or patients that are uninsured and financially qualify for the Michigan Community Dental Plan. Clients who are on WIC or Food Stamps are automatically qualified.