

Branch-Hillsdale-St. Joseph Community Health Agency



“Your Local Health Department”

The mission of the Branch-Hillsdale-St. Joseph Community Health Agency is to provide quality and accessible local health services with fiscal responsibility.

www.bhsj.org

*The Branch-
Hillsdale- St. Joseph
Community Health
Agency is an
organization that
excels at customer
service in terms of
responsiveness,
competence,
reliability, and basic
human courtesy.*

Our Vision

Letter to the Community

Letter to the Community

The Community Health Agency continues to excel in providing public health services to the citizens of Branch, Hillsdale and St. Joseph counties. We take pride in the high quality of our public health protection, communicable disease prevention and health promotion activities. These are a reflection of the dedicated work of the Agency's well trained and experienced staff, as well as the strong commitment and support from our Board of Health. I am pleased to present the Annual Report highlighting your local health department's accomplishments for the fiscal year 2008/2009.

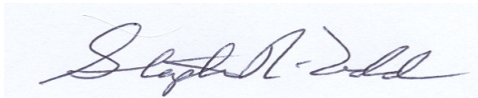
During the past year the Agency prepared for and completed an agency wide accreditation review. The review was conducted as a part of the Michigan Local Public Health Accreditation Program. The recommendations made during the accreditation's review have helped us fine tune our programs and services we provide.

In the fall of 2008 our Agency conducted a pilot dental sealant project with funding from the Sturgis Area Community Foundation. All children at Eastwood Elementary School in Sturgis, Michigan were offered a free dental exam, cleaning, sealants, fluoride varnishing and instruction on proper dental care. It is hoped that this pilot project can be duplicated at other schools in the future.

Since the early summer of 2009, we have served our communities by coordinating and distributing information regarding the H1N1 Flu pandemic. During the fall of 2009 we conducted a campaign to offer H1N1 Flu vaccinations to the school children and other individuals considered at high risk from complications of the H1N1 flu. Our vaccination efforts still continue.

On behalf of the staff and management, I would like to express our continued commitment to fulfill our mission and obligation to the communities that we serve.

Sincerely,



Stephen R. Todd, MPA, RS
Health Officer/Administrator

Board of Health

RODNEY OLNEY Branch County
DALE SWIFT, Chair Branch County
GERALDINE SPIETH Hillsdale County
KEN LAUTZENHEISER Hillsdale County
MICHAEL DUNLAP St. Joseph County
DAVID PUESCHEL, Vice Chair St. Joseph County
ROBIN BAKER St. Joseph County

Administrative Staff

STEPHEN TODD, MPA, RS Health Officer
JAMES PHILLIPS, MD Medical Director
REBECCA BURNS, RS Environmental Health Director
JENNIE SHOLLY, RN MA Prevention Services Director
JOHN ROBERTSON, BAA Director of Health Promotions & Education
DONNA COWDEN Chief Financial Officer
MAUREEN PETZKO, BA Director of Operations

Branch-Hillsdale-St. Joseph Community Health Agency County Health Profiles

Profile 2008

	Branch County	Hillsdale County	St. Joseph County	Michigan
Population 2008	45,726	46,212	62,232	10,003,422
Marriage 2007	278	344	483	56,996
Divorce 2007	187	214	303	34,522
% of population 65+ years 2008	13.9	15.3	13.6	13.0

Leading Causes of Death — Age Adjusted Rates per 100,000 2007

	Branch County	Hillsdale County	St. Joseph County	Michigan
Heart disease	236.1	215.0	215.4	222.6
Cancer	210.7	167.1	203.1	187.1
Stroke	46.6	48.3	55.5	42.8
COPD	49.9	50.2	57.5	43.5
Injury	*	*	46.9	35.6
Diabetes	40.2	*	29.3	26.3
Alzheimer's	*	*	*	22.1
Flu	*	*	*	14.9
Kidney	*	*	*	14.9
Suicide	*	*	*	10.9

Maternal/Infant Health Indicators 2008

	Branch County	Hillsdale County	St. Joseph County	Michigan
Total Births	557	561	913	121,231
Number of Teen Births (15-19)	69	58	118	12,277
Teen Pregnancy Rate (per 1,000 births)	65.1	46.9	75.4	54.1
% low Birth Weight	6.5	6.8	5.3	8.5
% very low Birth Weight	.9	1.25	1.53	1.81
% inadequate Prenatal Care	12.4	10.0	4.8	8.3
Infant mortality rates per 1,000 2005/07	5.4	4	8.3	7.8

Economic Indicators 2008

	Branch County	Hillsdale County	St. Joseph County
% Unemployment	14.3	17.7	14.1
Median Family Income	54,430	53,525	54,091
% Children Receiving Free & Reduced lunch (185% of Poverty and below)	50.5	49.0	51.7

Public Health is... Prevention, Protection, Promotion...

ENVIRONMENTAL HEALTH

On-Site Sewage

Reviews sites proposed for sewage disposal, issuance and/or denial of permits, sewage disposal evaluation, inspection, investigation and enforcement.

	<u>2008</u>	<u>2009</u>
Well/Septic Evaluations	23	28
Construction Permits	448	331
Septic Systems Inspected	421	309
Vacant Land Evaluations	61	27

Private and Public Water Supply

These programs are designed to assure both the proper installation of residential water wells and the monitoring and regulating of Type II water supplies to assure safe useable groundwater.

	<u>2008</u>	<u>2009</u>
Well Construction Permits Issued	540	440
Well Permits Inspected	585	448
New Water Supplies Approved	421	345
Non-community Water Supply	39	82

Food Protection

This program provides a systematic approach to minimize the risk of food-borne illness and to ensure that food meets consumer expectations through application of statewide standards for all establishments where food is prepared and/or served to the public.

	<u>2008</u>	<u>2009</u>
Establishments Inspected	940	957
Plan Reviews	17	29
Vending Inspections	103	102
Temporary Establishment Inspections	223	244

HEALTH PROMOTION

Health Education

Educational presentations include: Contraception, Sexually Transmitted Diseases, HIV/AIDS, Nutrition Education and other general health information.

	<u>2008</u>	<u>2009</u>
Community Events	37	36
Educational Presentations	17	41

Safe Kids Chapter

Safe Kids Worldwide is the first and only global organization dedicated solely to the prevention of accidental childhood injury - the number one killer of children ages 14 and under.

	<u>2008</u>	<u>2009</u>
Safe Kids Events	10	18
Bike Helmets Distributed	138	136
Car Seats Checked	421	444

Tobacco Reduction Action Coalition (TRAC)

TRAC seeks to improve the health of the people of Branch and Hillsdale Counties by encouraging the elimination or reduction of tobacco use.

	<u>2008</u>	<u>2009</u>
Community Events	18	21
Workshop Participants	126	221

Healthy Beginnings (Hillsdale County)

Family Success (Branch County)

Healthy Beginnings and Family Success are free programs for families with children 0-5 years old. Provides answers to parenting questions and provides information and ideas about child development.

<i>Hillsdale County</i>	<u>2008</u>	<u>2009</u>
Parenting Class Participants	822	541
Home Based Services	1,522	1,532

<i>Branch County</i>	<u>2008</u>	<u>2009</u>
Families Served	69	61
Home Visits	747	555

Healthy Families Nurturing Communities

(St. Joseph County)

Healthy Families Nurturing Communities is committed to ensuring that all children are healthy, safe and ready to succeed by age five.

<i>St. Joseph County</i>	<u>2008</u>	<u>2009</u>
Home Based Services Provided	1,648	1,582
Families Served	813	884

Children's Special Health Care Services

This county-based program helps pay for specialized medical treatment for children and some adults with chronic, and severe medical conditions.

	<u>2008</u>	<u>2009</u>
Individuals Enrolled	684	654
Assessments	259	489
Referrals for Medical Care	40	30

School Age Hearing and Vision Screenings

Provides periodic hearing and vision screening to children from age three through high school.

	<u>2008</u>	<u>2009</u>
Hearing Screening Performed	6,351	7,390
Vision Screenings Performed	9,157	12,210

through Core Public Health Services

PREVENTION SERVICES

Communicable Disease Prevention & Control

Provides Public Health Code compliance regarding prevention, investigation, and control of defined communicable diseases, including tuberculosis, sexually transmitted diseases (STD's), HIV/AIDS, animal bites and many other infectious diseases.

	<u>2008</u>	<u>2009</u>
Infectious Diseases Reported	11,501	20,409
STD Testing & Contact follow-up	404	283
HIV/AIDS Testing & Contact follow-up	77	102

Immunizations

Services that provide immunizations for vaccine-preventable diseases for children, and adults, including collaboration and assistance with health providers in the Vaccine for Children Program and use of the Michigan Children's Immunization Registry.

	<u>2008</u>	<u>2009</u>
Children Vaccinated	8,519	7,911
Adults Vaccinated	4,493	5,730
Travel Vaccines Given	120	197
Total Vaccines Given	13,132	14,058

Woman, Infants & Children (WIC)

A nutrition and educational program directed toward increasing healthy outcomes for pregnant and breast-feeding woman, infants and children up to 5 years of age.

	<u>2008</u>	<u>2009</u>
Average Monthly Enrollment	5,975	6,194

AREA AGENCY ON AGING

Branch-St. Joseph Area Agency on Aging (111C)

Our mission is to provide a full range of high quality services, programs, and opportunities which promote the independence and dignity of older adults while supporting those who care for them throughout Branch and St. Joseph Counties.

We envision inclusive communities filled with enriching activities and opportunities for older adults, where people who have questions or needs can find assistance and support in a manner that suits their preferences.

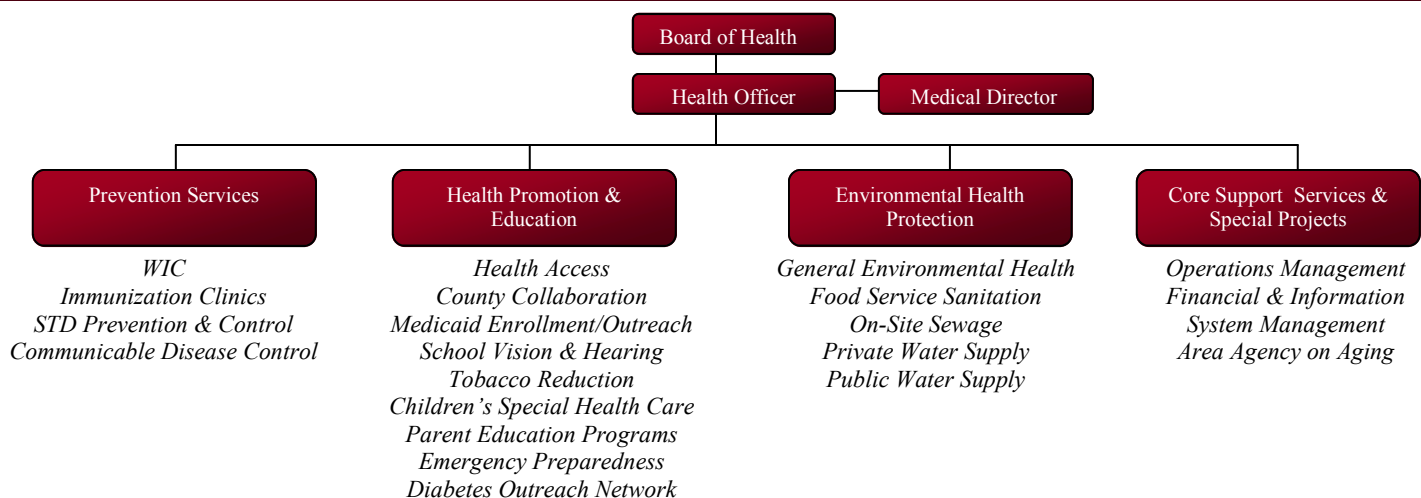
Values:

1. We place the people we serve at the center of our operation, honoring their preferences and privacy.
2. We assure efficient use of public and private resources.
3. We develop programs and services using an inclusive process to promote healthy aging and livable communities for all ages.
4. We exhibit strong leadership which responds to changing needs and fosters collaboration and cooperation throughout the communities we serve.
5. We use effective communication to carry out our mission and vision in an open, respectful and unbiased manner.

Service	Total	Units
Operations	\$79,309	
Nutrition	\$396,875	156,024
In-Home	\$163,673	47,678
Community	\$74,808	20,538
Access	\$172,714	28,411
Legal	\$9,000	338

Populations Served			
Non-Minority	10,651	Native American	14
Rural	11,188	Hispanic	21
Under Poverty-level	998	Asian/Pacific	16
Minority Poverty	151	Multiracial	275
African American	211		

Organizational Chart



Office Directory

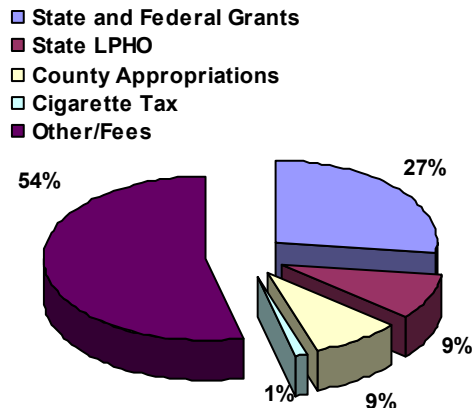
Coldwater (517) 279-9561
570 N Marshall Road
Coldwater, MI 49036

Hillsdale (517) 437-7395
20 Care Drive
Hillsdale, MI 49242

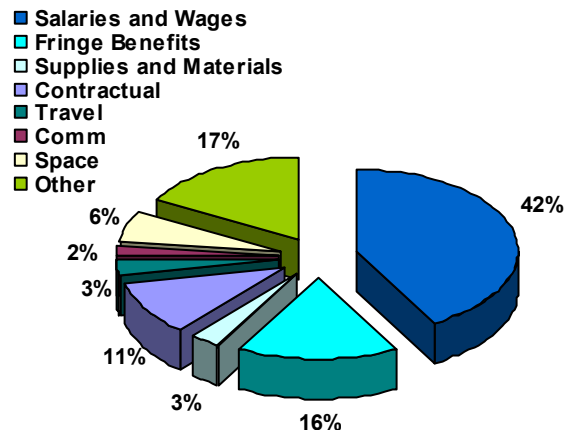
Three Rivers (269) 279-2161
1110 Hill Street
Three Rivers, MI 49093

Fiscal Year 2008/09 Total Budget \$7,131,289.00

Total Revenues 2008/09



Total Expenditures 2008/09



What's new on the web...www.bhsj.org

[Publications & Reports](#)

Increases community awareness of health issues through press releases or the creation of special reports on selected health topics.

[Health Data and Statistics](#)

County specific data on communicable diseases, motor vehicle data, birth data, hospitalization data and more.

[Downloads](#)

All forms are Adobe Acrobat files and therefore require [Adobe Acrobat Reader](#) to be displayed to view/print them.

[Current Clinic & Program Calendars](#)

Current calendars that show dates and times of clinic services and Parent Education programs.

[Communicable Disease Data](#)

Up to date tracking of the most common communicable diseases. Including: chicken pox, flu, head lice, hepatitis and tuberculosis.

[Employment Opportunities](#)

Available job opportunities within the Branch-Hillsdale- St. Joseph Community Health Agency and other Public Health positions in Michigan.

[Branch County Substance Abuse Task Force](#)

The task force provides, up-to-date education services to Branch County to help ensure "Branch County is a meth watch county".

The purpose of this task force is to prevent methamphetamine manufacture, sale and use.

[County Health Plan](#)

Residents of Branch, Hillsdale, and St. Joseph counties eligible for the Adult Benefits Waiver (ABW) program are enrolled in the Branch-Hillsdale-St. Joseph Health Plan A. This is NOT insurance but provides health benefits to low income uninsured residents.

[Prescription Discount Program](#)

Residents who do not have prescription coverage may be eligible for the Branch-Hillsdale-St. Joseph Prescription Program. This program is a way for people without prescription coverage to purchase prescription drugs at lower prices at their pharmacy.

[Dental Clinics](#)

Designed to serve Medicaid patients, including those with MICHild and Healthy Kids Dental, or patients that are uninsured and financially qualify for the Southwest Michigan Dental Plan. Clients who are on WIC or Food Stamps are automatically qualified.