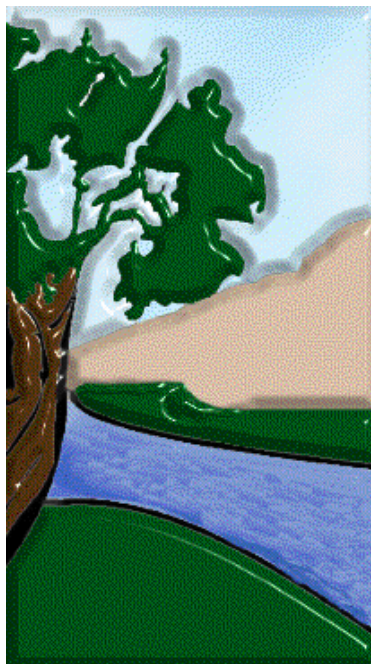


*To provide  
quality and  
accessible local  
public health  
services with fiscal  
responsibility.*

# Branch - Hillsdale - St. Joseph Community Health Agency



*"Your Local Health Department"*

[www.bhsj.org](http://www.bhsj.org)

*Our Mission*

## Annual Report 2004/2005

To plan for and  
deliver a wide range  
of services according  
to community needs  
and collaborate  
with other community  
agencies towards the  
completion of our  
mission.

# Our Vision

## *Letter to the Community*

As Public Health Officer for Branch, Hillsdale, and St. Joseph counties, I am pleased and honored to present the Annual Report highlighting your local health department's accomplishments for the fiscal year 2004/2005.

The Community Health Agency's continued success in providing for the benefits of public health protection, prevention, and health promotion is a reflection of the dedicated work of the Agency's well trained and experienced staff as well as the commitment and support from the County Boards of Commissioners in each County.

During fiscal year 2004/2005 the Agency developed and implemented a significant community-wide push in the fall to immunize over 6,000 adults with the flu vaccine. Despite the uncertainty of the national supply of flu vaccine, the agency's staff was able to obtain a dramatic increase in vaccine inventory, schedule frequent, accessible, and well attended flu shot clinics, and also assist private flu shot providers with obtaining emergency inventory.

During fiscal year 2004/2005 the agency developed and implemented WIC clinic sites in the "remote" outlying areas of our counties. WIC (Women, Infants, and Children) is a health education and nutrition program that targets individuals who are at both health and income risk. By this outreach effort, over 500 additional residents in our jurisdiction were able to participate in this wonderful program.

During fiscal year 2004/2005 the District Board of Health directed the Agency's administration to develop and implement a County Health Plan system of health benefits for adults at or below 35% of the poverty level. With the strong support of our State Legislative team, The Branch-Hillsdale-St. Joseph County Health Plan (Plan A) became a reality on December 1, 2005 by the enrollment of over 700 very low-income adults across the three counties. An extension of the Health Plan, Plan B, is due to occur in February 1, 2006 when over 600 adults between 50% and 150% of the federal poverty level can be enrolled in a limited health benefit of doctor office visits, outpatient testing and drug coverage.

During fiscal year 2004/2005 the agency completed the setup and implementation of being connected to the Southwest Michigan Tele-Health video-conferencing network. This regional network of hospitals, clinics, and local health departments provides access for health professionals in our communities to wide ranging regional, state and national training and conferencing opportunities via cutting edge technology.

On behalf of the staff and management, I would like to express our continued commitment to work diligently and effectively to fulfill our mission and obligation to the communities we serve.

Sincerely,



Duke Anderson, MPH, MBA  
Health Officer/Administrator

## *Our Values*

- ▶ Place the customers of our services at the center of our operations.
- ▶ Maintain and improve the quality of services for the benefit of our customers.
- ▶ Improve communication and coordination of services within the agency.
- ▶ Coordinate services with other locally based organizations to reduce duplication of effort and improve customer access to appropriate services.
- ▶ Provide our services in the most financially responsible manner.
- ▶ Provide a positive, rewarding, and challenging atmosphere for all employees.

## Board of Health

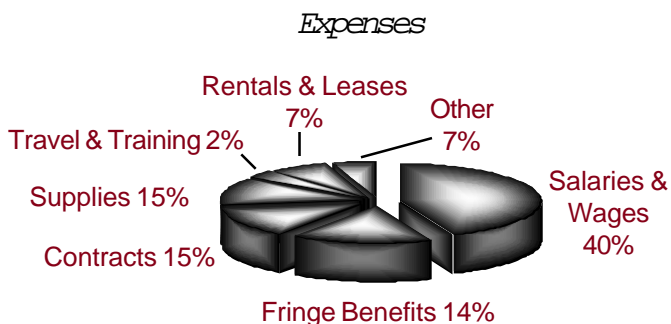
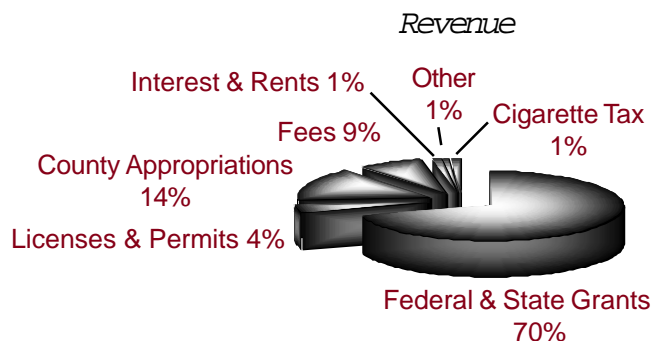
**RODNEY OLNEY** Branch County  
**DALE SWIFT** Branch County  
**BRAD DENSMORE** Hillsdale County  
**KEN LAUTZENHEISER** Hillsdale County (Board Vice-Chair)  
**MONTE BORDNER** St. Joseph County (Board Chairman)  
**DAVID PUESHEL** St. Joseph County  
**ROBIN BAKER** St. Joseph County

## Administrative Staff

Health Officer **DUKE E. ANDERSON, MPH, MBA**  
Medical Director **JAMES E. PHILLIPS, MD**  
Environmental Health Director **STEPHEN TODD, RS, MPA**  
Prevention Services Director **JENNIE SHOLLY, RN, MA**  
Director of Health Promotions & Education **JOHN R. ROBERTSON, BAA**  
Chief Financial Officer **DONNA COWDEN**  
Director of Operations **MAUREEN PETZKO, BA**

## Agency Budget

Total Budget - \$6,600,370



### Highlights

- ▶ Assisted the Michigan Department of Environmental Quality with investigation of environmental contamination sites, collecting over 246 water samples in our tri-county area
- ▶ Coordinated the cleanup of mercury spills at 3 area schools
- ▶ Actively participates in the Branch and St. Joseph County Methamphetamine Task Forces to educate the public as to the dangers of clandestine labs
- ▶ Provided food safety/sanitation classes to more than 120 foodservice workers

### On-Site Sewage

Reviews sites proposed for sewage disposal, issuance and/or denial of permits, sewage disposal evaluation, inspection, investigation and enforcement.

Well/Septic Evaluations	34	11	24	69	121
Construction Permits Issued	206	315	330	851	906
Septic Systems Inspected	195	272	257	724	607
Vacant Land Evaluations	21	110	35	166	200

### Private and Public Water Supply

These programs are designed to assure both the proper installation of residential water wells and the monitoring and regulating of Type II water supplies to assure safe usable groundwater.

Well Construction Permits Issued	259	322	371	952	1,104
Well Permits Inspected	265	283	259	807	893
Non-community Water Supply Surveys	12	20	9	41	29

### Food Protection

This program provides a systematic approach to minimize the risk of foodborne illness and to ensure that food meets consumer expectations through application of statewide standards for all establishments where food is prepared and/or served to the public.

Establishments Inspected	307	307	530	1,144	1,117
Plan Reviews	4	8	11	23	15
Mobile, Vending STFU Inspections	34	40	101	175	136
Temporary Establishment Inspections	55	82	156	293	292

## Highlights

- ▶ To locate information about various community presentations that are offered and many other Health Promotion services visit our website at [www.bhsj.org](http://www.bhsj.org)
- ▶ Performed 177 child passenger safety seat checks
- ▶ Distributed and installed 205 child passenger safety seats
- ▶ Distributed 115 smoke alarms in the tri-county area
- ▶ Received more than \$7,800 in grant funding and in-kind donations through the SAFE KIDS chapter
- ▶ Received more than \$10,000 in local funding to provide for an anti-smoking advertising campaign through the Branch-Hillsdale Tobacco Reduction Action Coalition
- ▶ Awarded a 2 year, \$50,000 grant to promote booster seat use in St. Joseph County, Michigan. Implementation began in April 2005

## Health Promotion & Health Education

### SAFE KIDS Chapter

SAFE KIDS Events	18	23
Bike Helmets Distributed	1,018	1,578

### Tobacco Reduction Action Coalition

Organizations Adopting Smoke Free Policies	4	N/A
Persons Impacted by Smoke-free Policies	1,483	N/A
Worksites Surveyed for Policies	85	N/A

### Outreach

Child Safety Seats Distributed	205	84
Baby Bags Distributed - Hillsdale County	325	476

### Healthy Beginnings Program - Hillsdale County

Families Screened	175	187
Home Based Services Provided	868	1,012

### Healthy Families Nurturing Communities

Families Served	224	252
Home Based Services Provided	1,594	1,828

### Children's Special Health Care Services

Families Enrolled	738	755
Assessments	399	366
Referrals for Medical Care	92	105

### School Age Hearing and Vision Screenings

Hearing Screenings Performed	6,772	6,897
Vision Screenings Performed	9,710	12,210

### *Highlights*

- ▶ A county-wide recall policy was implemented for each of our 3 counties for children 19-36 months who have incomplete immunizations
- ▶ Conducted a very successful Emergency Preparedness tabletop exercise that included a wide variety of local partner agencies, a variety of State Agency representatives, several members of both local and regional media, and a group of our counterparts from Ohio

### *Communicable Disease Prevention & Control*

Provides Public Health Code compliance regarding prevention, investigation, and control of defined communicable diseases. Includes tuberculosis, sexually transmitted diseases (STD's), HIV/AIDS, animal bites and many other infectious diseases.

Infectious Diseases Reported	<b>Total</b>	<b>8,301</b>
STD Testing & Contact Follow-up		<b>503</b>
HIV/AIDS Testing & contact follow-up		<b>516</b>

### *Family Planning*

Services provided to assist clients in voluntary choices of spacing children and controlling fertility through reproductive education, health assessment, and contraceptive services. Breast and Cervical Cancer Control screenings are also provided through these clinics.

Individuals Served	<b>2005</b>	<b>2,686</b>	<b>2004</b>	<b>2,962</b>
Total Family Planning Services		<b>8,223</b>		<b>6,764</b>
Breast & Cervical Cancer Screening Services	<b>395</b>	<b>215</b>		

### *Immunizations*

Services that provide immunizations for vaccine-preventable diseases for children, adults and international travelers. Includes collaboration and assistance with health providers in the Vaccine for Children Program and use of the Michigan Children's Immunization Registry.

Children (shots)	<b>2005</b>	<b>8,682</b>	<b>2004</b>	<b>10,258</b>
Adults (shots)		<b>6,948</b>		<b>5,183</b>
Travel Vaccination Program (shots)		<b>498</b>		<b>553</b>

### *WIC (Women, Infants & Children)*

A nutrition and educational program directed toward increasing healthy outcomes for pregnant, breast-feeding and post-partum women. Serves infants and children up to 5 years of age from low to middle income families. Includes breast feeding consultations, support, Sudden Infant Death (SIDS) bereavement counseling and follow-up on elevated blood lead levels.

Average Monthly Enrollment	<b>2005</b>	<b>5,224</b>	<b>2004</b>	<b>4,910</b>
----------------------------	-------------	--------------	-------------	--------------

### *Diabetes Outreach Network*

An autonomous 10 county network office that provides multiple activities and education programs that reduce the financial and medical burden of diabetes to the individual, community, and health care providers.

Marketing & Public/Professional Awareness Events	<b>Total</b>	<b>109</b>
--	--------------	------------

## Highlights

The Branch-St. Joseph Area Agency on Aging's mission is to provide for a full range of high quality services, programs, and opportunities which support the independence and dignity of older adults and their caregivers across Branch and St. Joseph counties

- ▶ For detailed information about the services we offer visit us at [www.bhsj.org](http://www.bhsj.org)
- ▶ Expanded relationships among key partners in long term care including hospitals, home health agencies and hospice organizations
- ▶ Developed a proposal to include the State Care Management Program into our service delivery system, locally. Awarded the contract in August, 2005 began transitioning the program in October 2005. The program was then implemented, including the hiring of new staff by December 2005

## Populations Served

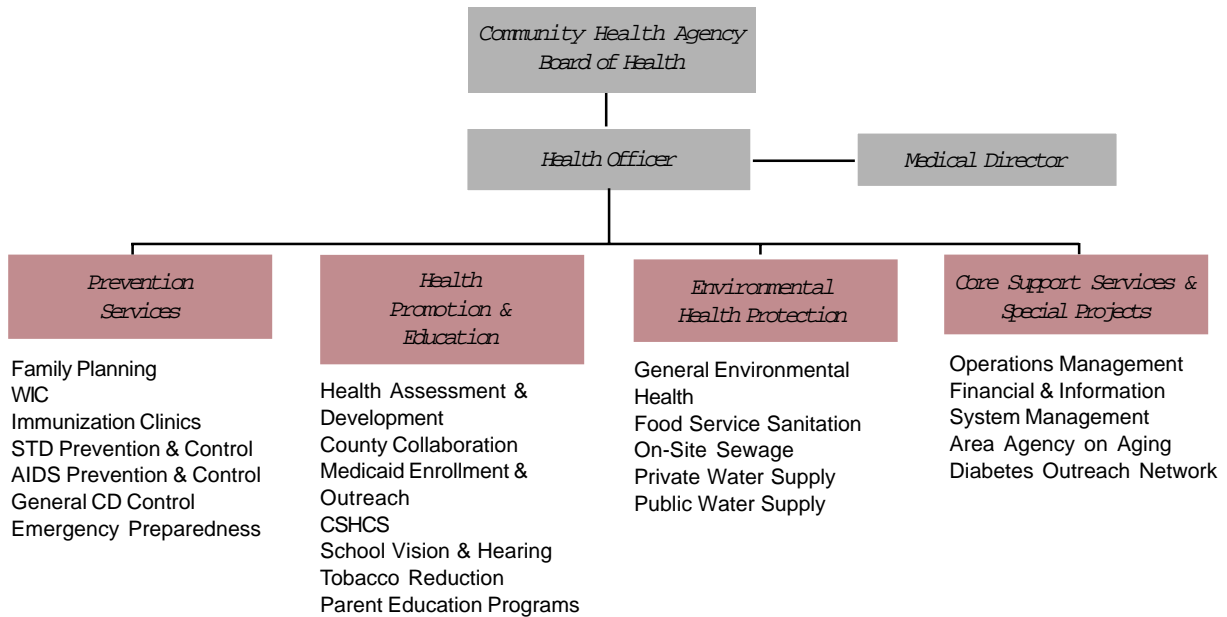
Non-Minority	<b>7,008</b>	African American	<b>161</b>
Rural	<b>8,022</b>	Native American	<b>16</b>
Under Poverty Level	<b>1,420</b>	Hispanic	<b>23</b>
Minority Poverty	<b>50</b>	Asian/Pacific Islander	<b>12</b>
		Multiracial	<b>142</b>

Note: Estimated unduplicated count of clients served under Title III, as reported by providers using the National Aging Program Information System (NAPIS).

## Service Units Provided by Type of Service

Congregate Meals	<b>28,746</b>	<b>37,225</b>
Home Delivered Meals	<b>23,766</b>	<b>57,754</b>
Home Care Assistance (# of hours)	<b>9,341</b>	<b>7,318</b>
Chore (# of hours)	<b>88</b>	<b>465</b>
In-Home Respite (# of hours)	<b>3,099</b>	<b>3,247</b>
Friendly Reassurance (# of contacts)	<b>675</b>	<b>3,388</b>
Case Coordination & Support (# of hours)	<b>1,024</b>	<b>1,079</b>
Information & Assistance (# of Hours)	<b>493</b>	<b>501</b>
Transportation (# of rides)	<b>4,665</b>	<b>12,978</b>
Senior Center Staffing (# of hours)	<b>1,020</b>	<b>6,190</b>
Legal Services (# of hours)	<b>216</b>	<b>62</b>
In-Home Repair (# jobs completed)	<b>N/A</b>	<b>30</b>
Adult Day Services (# of hours)	<b>6,688</b>	<b>2,256</b>
Disease Prevention/Health Promotion (# of activities/# of hrs)	<b>N/A</b>	<b>420</b>
Caregiver Supplemental Services (# of hrs/goods/services)	<b>29</b>	<b>39</b>
Counseling/Support Groups/Training (# of hours)	<b>128</b>	<b>176</b>

## Organizational Chart



## Office Locations

### COLDWATER

570 Marshall Rd  
Coldwater, MI 49036  
517-279-9561



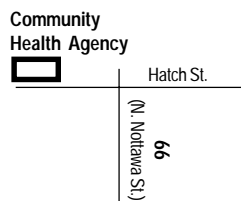
### HILLSDALE

20 Care Drive  
Hillsdale, MI 49242  
517-437-7395  
1-888-544-7395



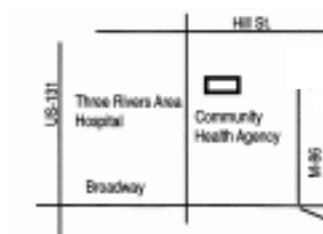
### STURGIS

209 E. Hatch  
Sturgis, MI 49091  
269-659-4013  
1-800-258-1093



### THREE RIVERS

1110 Hill Street  
Three Rivers, MI 49093  
269-273-2161  
1-800-258-1092



Visit us at [www.bhsj.org](http://www.bhsj.org) for clinic calendars, online Environmental Health forms, public health news, reports and more information about our agency's services.