

Branch-Hillsdale-St. Joseph Community Health Agency



“Your Local Health Department”

OUR MISSION

To plan for and deliver a wide range of services according to community needs and collaborate with other community agencies towards the completion of our mission.

www.bhsj.org

Letter to the Community

To plan for and
deliver a wide range
of services
according to
community needs
and collaborate with
other community
agencies towards the
completion of our
mission.

Letter to the Community,

On behalf of the Board of Health and the staff of the Branch-Hillsdale-St. Joseph Community Health Agency, I am pleased to present our annual report for 2007/2008. Our Agency continues to be committed to providing the citizens of Branch, Hillsdale and St. Joseph Counties the best in Public Health services. The high quality of public health protection, communicable disease prevention and health promotion is a reflection of the dedicated work of the Agency's well trained and experienced staff as well as the strong commitment and support from the County Boards of Commissioners in each of the three counties that we serve.

During the past year our emergency preparedness planning has involved the efforts of Branch, Hillsdale & St. Joseph counties.

During the past year, our agency has immunized 13,132 children and adults against communicable diseases. We also have seen an increase in the number of citizens in need of our WIC program. Our agency has had an increased involvement with food recalls and food borne illness protection as a result of the recalls.

During the past year our Agency has opened a Public Health Dental Clinic in Three Rivers, Michigan. During the first year of operation we have served nearly 3000 patients. The dental services that we offer are available to all residents of our district as well as residents from other counties.

As the economy has declined, the importance of our programs and services has increased. On behalf of the staff, I would like to express our continued commitment to fulfill our mission and obligation to the communities that we serve.

Sincerely,



Stephen R. Todd, R.S., MPA
Health Officer/Administrator

Board of Health

RODNEY OLNEY Branch County

DALE SWIFT, Chair Branch County

ALAN RINGENBERG Hillsdale County

KEN LAUTZENHEISER Hillsdale County

MICHAEL DUNLAP St. Joseph County

DAVID PUESCHEL, Vice Chair St. Joseph County

ROBIN BAKER St. Joseph County

Administrative Staff

STEPHEN TODD, RS, MPA Health Officer

JAMES PHILLIPS, MD Medical Director

REBECCA BURNS, RS Environmental Health Director

JENNIE SHOLLY, RN MA Prevention Services Director

JOHN ROBERTSON, BAA Director of Health Promotions & Education

DONNA COWDEN Chief Financial Officer

MAUREEN PETZKO, BA Director of Operations

Our Vision

Branch-Hillsdale-St. Joseph Community Health Agency...

County Health Profiles

Profile 2006

	<i>Branch County</i>	<i>Hillsdale County</i>	<i>St. Joseph County</i>	<i>Michigan</i>
Population	45,875	47,206	62,777	10,095,643
Marriage	299	335	500	59,400
Divorce	205	234	288	35,022
% of population 65+ years	13.7%	14.2%	13.2%	12.5%

Leading Causes of Death — Rates per 100,000 Population

	<i>Branch County</i>	<i>Hillsdale County</i>	<i>St. Joseph County</i>	<i>Michigan</i>
Heart disease	210.8	258.8	261.3	226.7
Cancer	202.2	176.1	220.2	190.8
Stroke	55.5	52.9	28.5	44.7
COPD	*	37.8	41.3	42.9
Injury	47.0	*	58.2	34.5
Diabetes	43.2	*	40.1	26.7
Alzheimer's	*	*	*	21.7
Flu	*	*	*	15.7
Kidney	*	*	*	15.0
Suicide	*	*	*	11.0

Maternal/Infant Health Indicators

	<i>Branch County</i>	<i>Hillsdale County</i>	<i>St. Joseph County</i>	<i>Michigan</i>
Total Births	629	567	937	127,537
Number of Teen Births (15-19)	79	70	91	12,322
Teen Pregnancy Rate (per 1,000 births)	73.4	54.1	62.0	54.0
% low Birth Weight	6%	7%	8%	8%
% very low Birth Weight	0%	2%	1%	2%
% inadequate Prenatal Care	9.1	8.8	8.3	6.4
Infant Deaths	2	7	9	940

Economic Indicators

	<i>Branch County</i>	<i>Hillsdale County</i>	<i>St. Joseph County</i>	<i>Michigan</i>
Unemployment 2008	8.7	10.4	8.7	8.4
Median Family Income 2008	51,600	52,700	53,100	60,900
% Children Receiving Free & Reduced lunch (185% of Poverty and below) 2007/08	45.4	43.8	44.5	37.4

Public Health is... Prevention, Protection, Promotion...

ENVIRONMENTAL HEALTH

On-Site Sewage

Reviews sites proposed for sewage disposal, issuance and/or denial of permits, sewage disposal evaluation, inspection, investigation and enforcement.

	<u>2007</u>	<u>2008</u>
Well/Septic Evaluations	42	23
Construction Permits	606	448
Septic Systems Inspected	519	421
Vacant Land Evaluations	83	61

Private and Public Water Supply

These programs are designed to assure both the proper installation of residential water wells and the monitoring and regulating of Type II water supplies to assure safe useable groundwater.

	<u>2007</u>	<u>2008</u>
Well Construction Permits Issued	663	540
Well Permits Inspected	525	585
Non-community Water Supply	40	39

Food Protection

This program provides a systematic approach to minimize the risk of food-borne illness and to ensure that food meets consumer expectations through application of statewide standards for all establishments where food is prepared and/or served to the public.

	<u>2007</u>	<u>2008</u>
Establishments Inspected	941	940
Plan Reviews	12	17
Vending Inspections	134	103
Temporary Establishment Inspections	241	223

HEALTH PROMOTION

Health Education

Educational presentations include: Contraception, Sexually Transmitted Diseases, HIV/AIDS, Nutrition Education and other general health information.

	<u>2007</u>	<u>2008</u>
Community Events	26	37
Educational Presentations	14	17

Safe Kids Chapter

Safe Kids Worldwide is the first and only global organization dedicated solely to the prevention of accidental childhood injury - the number one killer of children ages 14 and under.

	<u>2007</u>	<u>2008</u>
Safe Kids Events	24	10
Bike Helmets Distributed	301	138
Car Seats Checked	190	421

Tobacco Reduction Action Coalition (TRAC)

TRAC seeks to improve the health of the people of Branch and Hillsdale Counties by encouraging the elimination or reduction of tobacco use.

	<u>2007</u>	<u>2008</u>
Community Events	9	18
Workshop Participants	49	126

Healthy Beginnings (Hillsdale County)

Family Success (Branch County)

Healthy Beginnings and Family Success are free programs for families with children 0-5 years old. Provides answers to parenting questions and provides information and ideas about child development.

<i>Hillsdale County</i>	<u>2007</u>	<u>2008</u>
Parenting Class Participants	542	822
Home Based Services	1,318	1,522

<i>Branch County</i>	<u>2007</u>	<u>2008</u>
Families Served	NA	69
Home Visits	NA	747

Healthy Families Nurturing Communities

(St. Joseph County)

Healthy Families Nurturing Communities is committed to ensuring that all children are healthy, safe and ready to succeed by age five.

<i>St. Joseph County</i>	<u>2007</u>	<u>2008</u>
Home Based Services Provided	1,494	1,648
Families Served	934	813

Children's Special Health Care Services

This county-based program helps pay for specialized medical treatment for children and some adults with chronic, and severe medical conditions.

	<u>2007</u>	<u>2008</u>
Individuals Enrolled	704	684
Assessments	209	259
Referrals for Medical Care	59	40

School Age Hearing and Vision Screenings

Provides periodic hearing and vision screening to children from age three through high school.

	<u>2007</u>	<u>2008</u>
Hearing Screening Performed	7,480	6,351
Vision Screenings Performed	11,419	9,157

through Core Public Health Services

PREVENTION SERVICES

Communicable Disease Prevention & Control

Provides Public Health Code compliance regarding prevention, investigation, and control of defined communicable diseases, including tuberculosis, sexually transmitted diseases (STD's), HIV/AIDS, animal bites and many other infectious diseases.

	2007	2008
Infectious Diseases Reported	10,247	11,501
STD Testing & Contact follow-up	890	404
HIV/AIDS Testing & Contact follow-up	212	77

Immunizations

Services that provide immunizations for vaccine-preventable diseases for children, and adults, including collaboration and assistance with health providers in the Vaccine for Children Program and use of the Michigan Children's Immunization Registry.

	2007	2008
Children Vaccinated	7,254	8,519
Adults Vaccinated	4,711	4,493
Travel Vaccines Given	118	120

Woman, Infants & Children (WIC)

A nutrition and educational program directed toward increasing healthy outcomes for pregnant and breast-feeding woman, infants and children up to 5 years of age.

	2007	2008
Average Monthly Enrollment	5,780	5,975

AREA AGENCY ON AGING

Area Agency on Aging (IIIC) Branch-St. Joseph

Our mission is to provide a full range of high quality services, programs, and opportunities which promote the independence and dignity of older adults while supporting those who care for them throughout Branch and St. Joseph Counties.

We envision inclusive communities filled with enriching activities and opportunities for older adults, where people who have questions or needs can find assistance and support in a manner that suits their preferences.

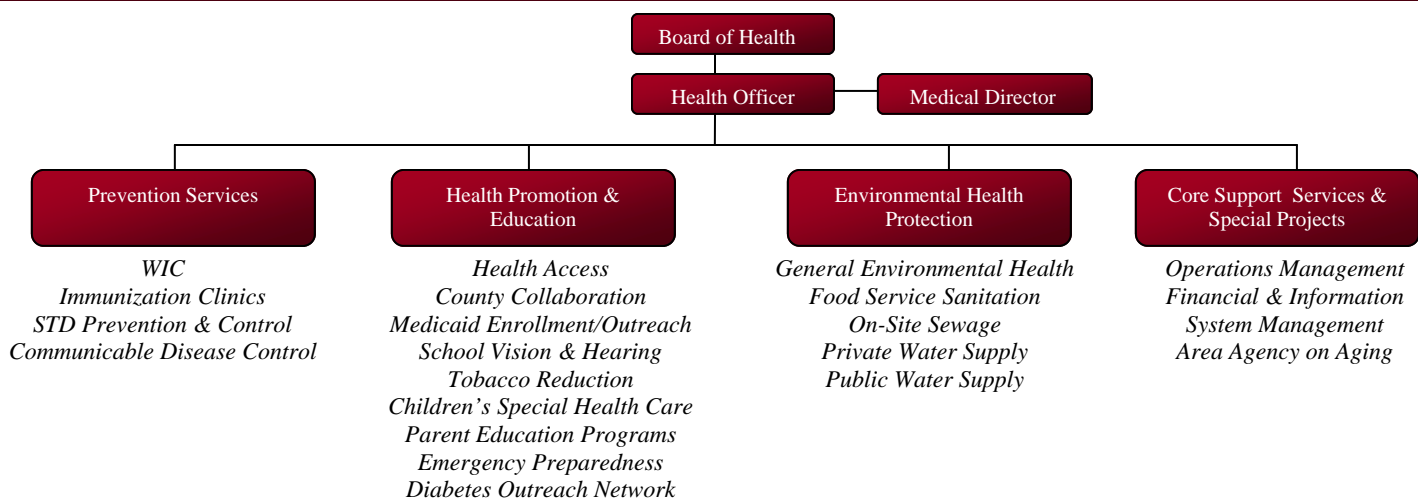
Values:

1. We place the people we serve at the center of our operation, honoring their preferences and privacy.
2. We assure efficient use of public and private resources.
3. We develop programs and services using an inclusive process to promote healthy aging and livable communities for all ages.
4. We exhibit strong leadership which responds to changing needs and fosters collaboration and cooperation throughout the communities we serve.
5. We use effective communication to carry out our mission and vision in an open, respectful and unbiased manner.

Service	Total	Units
Operations	\$85,477	
Nutrition	\$412,589	139125
In-Home	\$161,031	45371
Community	\$94,509	17994
Access	\$163,227	38261
Legal	\$9,000	292

Populations Served			
Non-Minority	13173	Native American	27
Rural	13773	Hispanic	26
Under Poverty-level	1593	Asian/Pacific	30
Minority Poverty	158	Multiracial	301
African American	216		

Organizational Chart



Office Directory

Coldwater (517) 279-9561
570 N Marshall Road
Coldwater, MI 49036

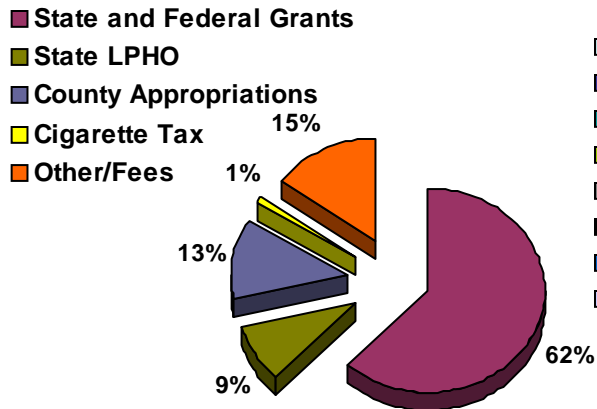
Hillsdale (517) 437-7395
20 Care Drive
Hillsdale, MI 49242

Sturgis (269) 659-4013
209 W. Hatch Street
Sturgis, MI 49091

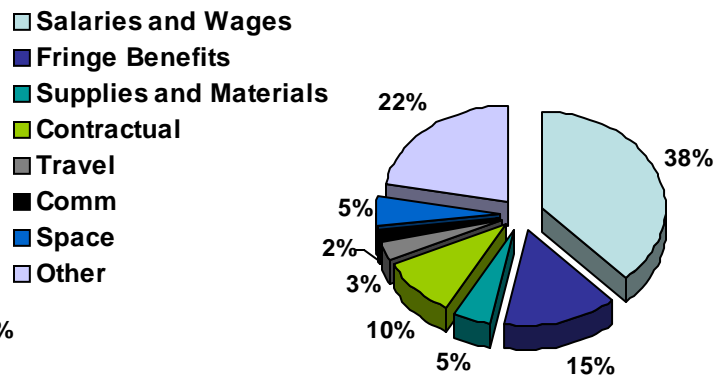
Three Rivers (269) 279-2161
1110 Hill Street
Three Rivers, MI 49093

Fiscal Year 2007/08 Total Budget \$7,739,501

Total Revenues 2007-08



Total Expenditures 2007-08



What's new on the web...www.bhsj.org

[Publications & Reports](#)

Increases community awareness of health issues through press releases or the creation of special reports on selected health topics.

[Health Data and Statistics](#)

County specific data on communicable diseases, motor vehicle data, birth data, hospitalization data and more.

[Downloads](#)

All forms are Adobe Acrobat files and therefore require [Adobe Acrobat Reader](#) to be displayed to view/print them.

[Current Clinic & Program Calendars](#)

Current calendars that show dates and times of clinic services and Parent Education programs.

[Communicable Disease Data](#)

Up to date tracking of the most common communicable diseases. Including: chicken pox, flu, head lice, hepatitis and tuberculosis.

[Employment Opportunities](#)

Available job opportunities within the Branch-Hillsdale- St. Joseph Community Health Agency and other Public Health positions in Michigan.

[Branch County Substance Abuse Task Force](#)

The task force provides, up-to-date education services to Branch County to help ensure "Branch County is a meth watch county".

The purpose of this task force is to prevent methamphetamine manufacture, sale and use.

[County Health Plan](#)

Residents of Branch, Hillsdale, and St. Joseph counties eligible for the Adult Benefits Waiver (ABW) program are enrolled in the Branch-Hillsdale-St. Joseph Health Plan A. This is NOT insurance but provides health benefits to low income uninsured residents.

[Prescription Discount Program](#)

Residents who do not have prescription coverage may be eligible for the Branch-Hillsdale-St. Joseph Prescription Program. This program is a way for people without prescription coverage to purchase prescription drugs at lower prices at their pharmacy.

[Dental Clinics](#)

Designed to serve Medicaid patients, including those with MICHild and Healthy Kids Dental, or patients that are uninsured and financially qualify for the Southwest Michigan Dental Plan. Clients who are on WIC or Food Stamps are automatically qualified.