

Branch-Hillsdale-St. Joseph Community Health Agency



“Your Local Health Department”

The mission of the Branch-Hillsdale-St. Joseph Community Health Agency is to provide quality and accessible local health services with fiscal responsibility.

www.bhsj.org

The Branch-Hillsdale-St. Joseph Community Health Agency is an organization that excels in the community in terms of responsiveness, competence and collaboration.

Our Vision

Letter to the Community

Fiscal Year 2010/11 was a year of accomplishment for the Branch-Hillsdale-St. Joseph Community Health Agency. During FY 2010/11:

The Community Health Agency partnered with Three Rivers Health and Three Rivers Community Schools to successfully apply for funding and develop a Community Adolescent Health Clinic adjacent to Three Rivers High School. This clinic provides on-site primary care, behavioral health services, health promotion/disease prevention education, and referral services to students so as to improve their physical, intellectual, and emotional health status.

The Community Health Agency received grant funds to purchase and implement an Electronic Content Management System (ECM). This system allows the agency to more quickly convert its paper documents into electronic formats and to create database interfaces which results in improved document storage and retrieval capabilities.

The Community Health Agency opened its second public health dental clinic. This dental clinic features state of the art operatories, digital radiography equipment and electronic medical records. The clinic is housed in the newly renovated lower level of our Hillsdale office.

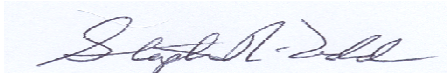
The Area Agency on Aging, working in collaboration with several law enforcement, health and human service agencies, developed and released the St. Joseph County Vulnerable Adult Protocol. This protocol explains mandatory reporting requirements and sets forth the process to assure vulnerable adults the protections due under the law.

The Community Health Agency, as part of its Food Protection program, trained 103 local food establishment owners and operators as Certified Food Safety Managers.

The Community Health Agency initiated a WIC Peer Breastfeeding Support Program, a paraprofessional-led educational intervention that provides basic breastfeeding information and encouragement to eligible pregnant and breastfeeding mothers.

The Community Health Agency is proud of its many accomplishments, as it strives to provide a wide range of public health services to residents of the tri-county area. We take pride in the high quality public health protection, prevention and promotion services we deliver. The high standards of excellence, set forth by the administrative team and Board of Health, are maintained through the personal diligence and dedication of our well-trained and competent work force. On behalf of the staff and management, I am pleased to present to you our FY 2010/11 Annual Report.

Sincerely,



Stephen R. Todd, MPA, RS
Health Officer/Administrator

ROBIN BAKER, Chair St. Joseph County

BRAD DENSMORE, Vice Chair Hillsdale County

DALE SWIFT Branch County

RODNEY OLNEY Branch County

ALAN RINGENBERG Hillsdale County

ALLEN BALOG St. Joseph County

GERALD LOUDENSLAGER St. Joseph County

Administrative Staff

STEPHEN TODD, MPA, RS Health Officer

JAMES PHILLIPS, MD Medical Director

REBECCA BURNS, MPH, RS Environmental Health Director

JOANN WILCZYNSKI, MS, RN Prevention Services Director

THERESA CHRISTNER, MA Health Promotions & Education Director

DONNA COWDEN Chief Financial Officer

MAUREEN PETZKO, BA Director of Operations

Branch-Hillsdale-St. Joseph Community Health Agency

County Health Profiles

Profile 2010

	Branch County	Hillsdale County	St. Joseph County	Michigan
Population 2010	45,248	46,688	61,295	9,883,640
Marriage 2010	247	270	450	54,182
Divorce 2010	193	231	273	34,956
% of Population 65+ Years 2010	14.7	15.7	14.9	13.8

Leading Causes of Death — Age Adjusted Rates per 100,000 2010

	Branch County	Hillsdale County	St. Joseph County	Michigan
Heart Disease	194.3	228.6	235.9	204.2
Cancer	188.2	187.3	217.5	182.9
Chronic Lower Respiratory Diseases	44.9	44.0	49.0	45.6
Stroke	47.2	39.3	32.0	39.5
Unintentional Injuries	*	60.4	44.0	36.1
Diabetes Mellitus	46.4	*	35.8	24.0
Alzheimer's Disease	49.7	*	*	24.0
Kidney	*	*	*	15.3
Pneumonia & Influenza	*	*	*	13.6
Suicide	*	*	*	12.5

Maternal/Infant Health Indicators 2010

	Branch County	Hillsdale County	St. Joseph County	Michigan
Total Births	533	541	836	114,717
Number of Teen Births (15-19)	57	45	73	10,832
Teen Pregnancy Rate (per 1,000 births)	50.8	32.6	51.1	47.9
% Low Birth Weight	4.9	6.8	7.1	8.4
% Very Low Birth Weight	1.5	*	1.6	1.7
% Inadequate Prenatal Care—Kessner Index	12.0	8.1	8.1	8.3
Infant Mortality Rates per 1,000 (2008-10)	5.5	3.7	10.4	7.3

Economic Indicators 2010

	Branch County	Hillsdale County	St. Joseph County	Michigan
% Unemployment (Annual Rate)	12.3	14.4	12.3	12.7
Median Family Income	50,931	50,546	52,586	60,341
% Children Receiving Free & Reduced-Lunch (185% of Poverty and Below)	52.6	53.1	58.9	46.5

**Rate does not meet standards of precision or reliability*

Public Health is... Prevention, Protection, Promotion...

ENVIRONMENTAL HEALTH

*On-Site Sewage

Reviews sites proposed for sewage disposal, issuance and/or denial of permits, sewage disposal evaluation, inspection, investigation and enforcement.

	2010	2011
Well/Septic Evaluations	23	20
Construction Permits	366	333
Septic Systems Inspected	315	285
Vacant Land Evaluations	26	19

*Private and Public Water Supply

These programs are designed to assure both the proper installation of residential water wells and the monitoring and regulating of Type II water supplies to assure safe useable groundwater.

	2010	2011
Well Construction Permits Issued	453	464
Well Permits Inspected	439	420
New Water Supplies Approved	298	284
Non-community Water Supply	35	44

*Food Protection

This program provides a systematic approach to minimize the risk of food-borne illness and to ensure that food meets consumer expectations through application of statewide standards for all establishments where food is prepared and/or served to the public.

	2010	2011
Establishment Inspections	995	955
Plans Reviewed	28	23
Vending Inspections	94	86
Temporary Establishment Inspections	248	267

HEALTH PROMOTION

Health Education

Educational presentations include: Contraception, Sexually Transmitted Diseases, HIV/AIDS, Nutrition Education and other general health information.

	2010	2011
Community Events	39	46
Educational Presentations	28	51

Safe Kids Coalition

Safe Kids Worldwide is the first and only global organization dedicated solely to the prevention of accidental childhood injury - the number one killer of children ages 14 and under.

	2010	2011
Safe Kids Events	22	19
Bike Helmets Distributed	225	300
Car Seats Checked	317	243

Tobacco Reduction Action Coalition (TRAC)

TRAC seeks to improve the health of the people of Branch and Hillsdale Counties by encouraging the elimination or reduction of tobacco use.

	2010	2011
Community Events/Presentations	23	22
Workshop/Quitline Participants	274	441

Healthy Beginnings (Hillsdale County)

Healthy Beginnings and Family Success are free programs for families with children 0-5 years old. Provides answers to parenting questions and provides information and ideas about child development.

Hillsdale County	2010	2011
Parenting Class Participants	272	229
Home Based Services	518	595

Children's Special Health Care Services

This county-based program helps pay for specialized medical treatment for children and some adults with chronic, and severe medical conditions.

	2010	2011
Individuals Enrolled	660	666
Assessments	728	775
Referrals for Medical Care	40	25

*School Age Hearing and Vision Screenings

Provides periodic hearing and vision screening to children from age three through high school.

	2010	2011
Hearing Screening Performed	6,316	6,969
Vision Screenings Performed	13,255	13,126

PREVENTION SERVICES

*Communicable Disease Prevention & Control

Provides Public Health Code compliance regarding prevention, investigation, and control of defined communicable diseases, including tuberculosis, sexually transmitted diseases (STDs), HIV/AIDS, animal bites and many other infectious diseases.

	2010	2011
Infectious Diseases Reported	13,150	13,849
STD Testing & Contact follow-up	328	470
HIV/AIDS Testing & Contact follow up	114	135

*Essential Local Public Health Services

through Core Public Health Services

*Immunizations

Services that provide immunizations for vaccine-preventable diseases for children, and adults, including collaboration and assistance with health providers in the Vaccine for Children Program and use of the Michigan Care Improvement Registry. Data include H1N1 Vaccination Campaign.

	<u>2010</u>	<u>2011</u>
Children Vaccinated	30,345	10,866
Adults Vaccinated	14,372	6,895
Travel Vaccines Given	90	171
Total Vaccines Given	44,807	17,932

Women, Infants & Children (WIC)

A nutrition and educational program directed toward increasing healthy outcomes for pregnant and breast-feeding woman, infants and children up to 5 years of age.

	<u>2010</u>	<u>2011</u>
Average Monthly Enrollment	6,194	6,076

WIC Peer Breastfeeding Support Program

A peer counselor program for WIC participants that provides mother-to-mother support to encourage mothers to breastfeed their babies.

	<u>2011</u>
Number of pregnant and breastfeeding women in class	210

AREA AGENCY ON AGING

Branch-St. Joseph Area Agency on Aging (III C)

Our mission is to provide a full range of high quality services, programs and opportunities which promote the independence and dignity of older adults while supporting those who care for them throughout Branch and St. Joseph Counties.

**Essential Local Public Health Services*

Program and Partnership Highlights:

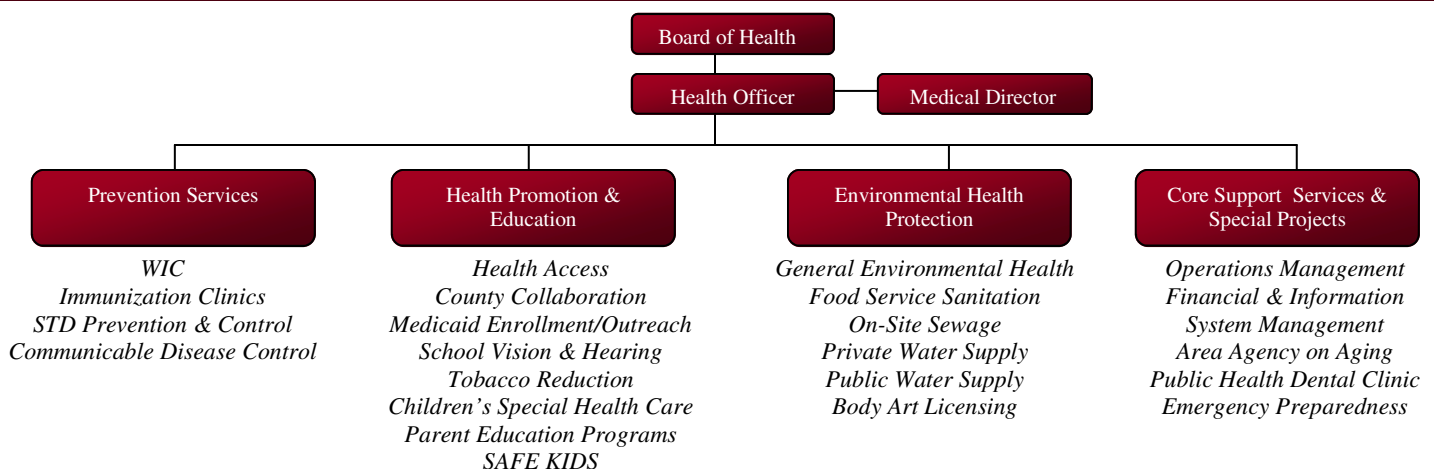
- **Personal Action Toward Health (PATH)** is a Chronic Disease Self-Management Program designed to help adults learn to better manage their chronic conditions. Our community partners include: Branch Commission on Aging, St. Joseph Commission on Aging, Pines Behavioral Health Services, Community Mental Health & Substance Abuse Services of St. Joseph County and St. Joseph County MSU Extension.
- **Creating Confident Caregivers** utilizes the Savvy Caregiver Program, a university-tested program for family members caring for loved a one with memory loss or showing signs of dementia. The program provided nearly 50 families with information, skills and attitudes to help them effectively manage stress and increase care-giving skills.
- **Elder Abuse Prevention & Awareness** activities occurred throughout 2011 including Elder Rights and Awareness Day being declared by the St. Joseph County Board of Commissioners on June 21, 2011. Local taskforces in each county continued their work on improving collaboration and community response. We also continued out advocacy with the Michigan Legislature to pass a package of elder abuse bills aimed to improve current state laws, address penalties and to better protect vulnerable adults.

<u>Service</u>	<u>Total</u>	<u>Units</u>
Operations	\$86,941	
Nutrition	\$427,142	204,648
In-Home	\$160,534	42,875
Community	\$57,935	23,520
Access	\$181,387	19,618
Legal	\$9,000	282

Populations Served

Non-Minority	5,727	Native American	15
Rural	5,970	Hispanic	13
Under Poverty-level	893	Asian/Pacific	7
Minority Poverty	58	Multiracial	323
African American	164		

Organizational Chart



Office Directory

Coldwater (517) 279-9561
570 N. Marshall Road
Coldwater, MI 49036

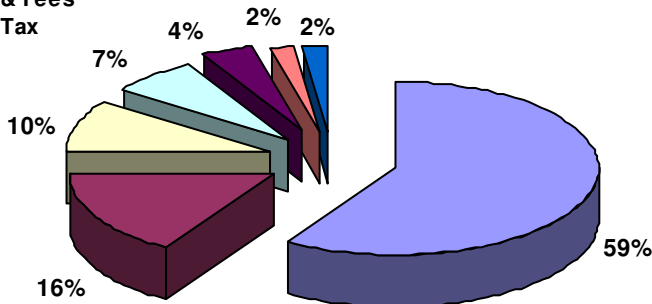
Hillsdale (517) 437-7395
20 Care Drive
Hillsdale, MI 49242

Three Rivers (269) 273-2161
1110 Hill Street
Three Rivers, MI 49093

Fiscal Year 2010/11 Total Budget \$7,210,148

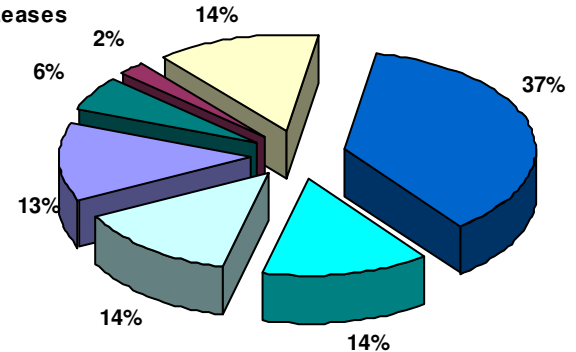
Total Revenues 2010/11

- State & Federal Grants
- State ELPHS
- County Appropriations
- Charges for Services
- Licenses & Fees
- Cigarette Tax
- Other



Total Expenditures 2010/11

- Salaries and Wages
- Fringe Benefits
- Supplies and Materials
- Contractual
- Rental & Leases
- Travel
- Other



What's new on the web...www.bhsj.org

[Publications & Reports](#)

Increases community awareness of health issues through press releases or the creation of special reports on selected health topics.

[Health Data and Statistics](#)

County specific data on communicable diseases, motor vehicle data, birth data, hospitalization data and more.

[Downloads](#)

All forms are Adobe Acrobat files and therefore require [Adobe Acrobat Reader](#) to view/print them.

[Current Clinic & Program Calendars](#)

Current calendars that show dates and times of clinic services and Parent Education programs.

[Communicable Disease Data](#)

Up-to-date tracking of the most common communicable diseases. Including: chicken pox, flu, head lice, hepatitis and tuberculosis.

[Employment Opportunities](#)

Available job opportunities within the Branch-Hillsdale- St. Joseph Community Health Agency and other Public Health positions in Michigan.

[Branch County Substance Abuse Task Force](#)

The task force provides up-to-date education services to Branch County to help ensure "Branch County is a meth watch county".

The purpose of this task force is to prevent methamphetamine manufacture, sale and use.

[County Health Plan](#)

Residents of Branch, Hillsdale, and St. Joseph counties eligible for the Adult Benefits Waiver (ABW) program are enrolled in the Branch-Hillsdale-St. Joseph Health Plan A. This is NOT insurance but provides health benefits to low income, uninsured residents.

[Prescription Discount Program](#)

Residents who do not have prescription coverage may be eligible for the Branch-Hillsdale-St. Joseph Prescription Program. This program is a way for people without prescription coverage to purchase prescription drugs at lower prices at their pharmacy.

[Dental Clinics](#)

Designed to serve Medicaid patients, including those with MICHild and Healthy Kids Dental, or patients that are uninsured and financially qualify for the Michigan Community Dental Plan. Clients who are on WIC or Food Stamps are automatically qualified.