

Annual Report 2020



BRANCH-HILLSDALE-ST. JOSEPH
COMMUNITY HEALTH
AGENCY | YOUR LOCAL
HEALTH DEPARTMENT

BOARD OF HEALTH



Terri Norris
Branch County



Bruce Caswell
Hillsdale County
(Chairperson)



Allen J. Balog
St. Joseph County



Tom Matthew
Branch County



Mark E. Wiley
Hillsdale County



Kathy Pangle
St. Joseph County
(Vice Chairperson)

AGENCY DIRECTORS



Rebecca Burns,
MPH, RS
Health Officer



Dr. H. Lauren Vogel, DO, MPH
Medical Director



Theresa Fisher
Director of
Administrative
Services



Paul Andriacchi,
REHS
Director of
Environmental
Health

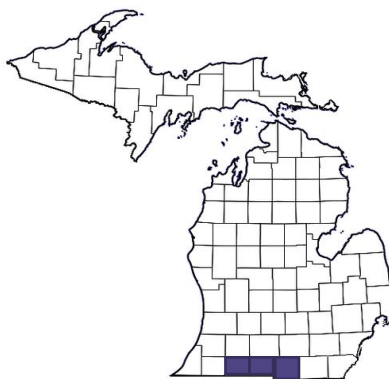
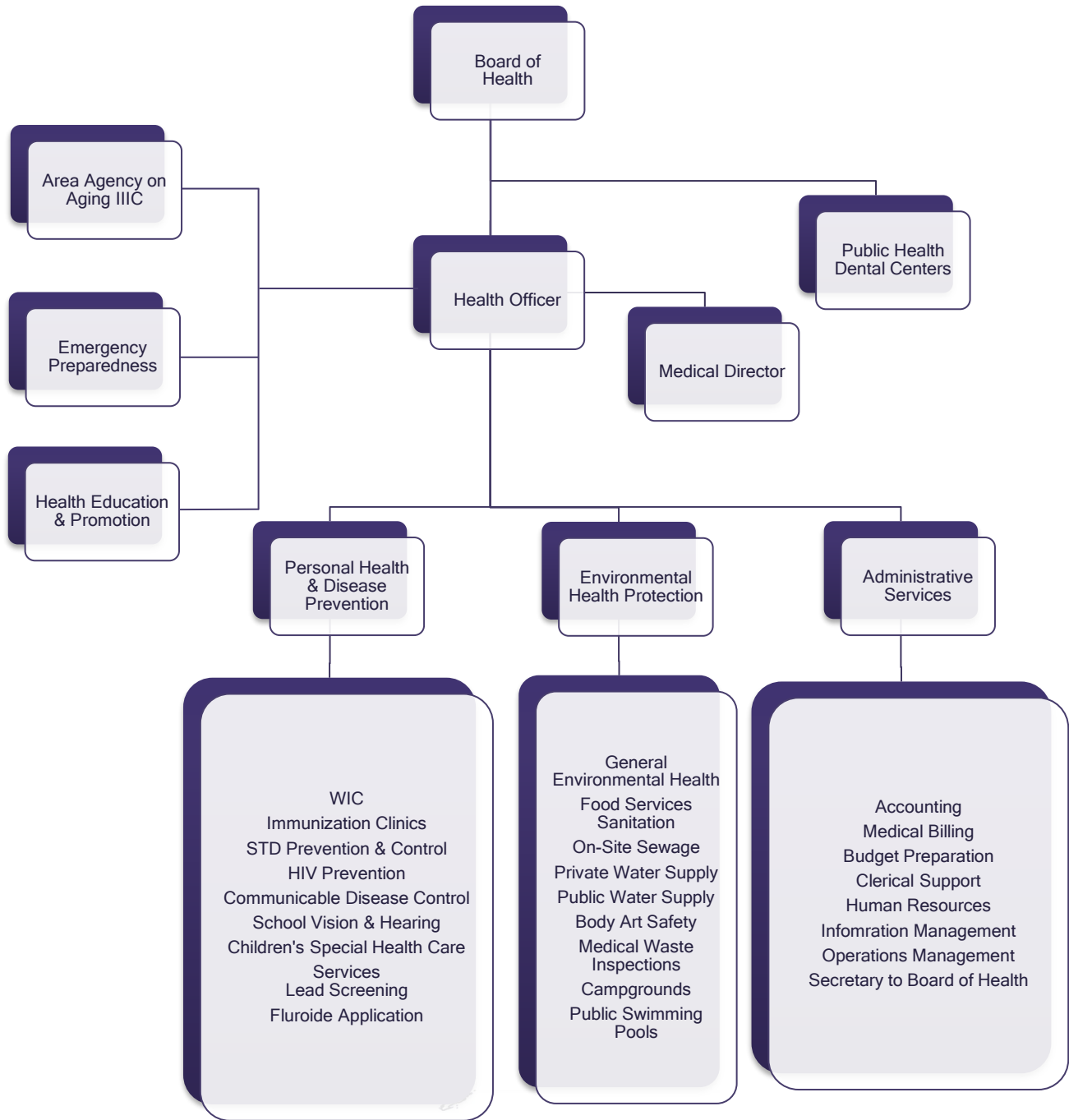


Kali Nichols, MPH
Director of Personal
Health & Disease
Prevention



Laura Sutter,
Director of Area
Agency on Aging
3C

ORGANIZATIONAL CHART



LETTER TO THE COMMUNITY

This 2020 Annual Report is focused on the COVID-19 Pandemic. The efforts of “Your Local Health Department” throughout 2020 were targeted at putting our clients first.



- The year started with an outbreak of Eastern Equine Encephalitis (EEE). EEE is one of the most dangerous mosquito-borne diseases. There were 5 human cases of EEE in Michigan with a 50% mortality rate. MDHHS conducted aerial mosquito control treatments which were successful with no adverse events reported.
 - BHSJCHA started a Strategic Planning process intended to map out a 5-year plan for Your Local Health Department. This was put on pause due to the COVID-19 pandemic.
 - We first received information about an outbreak of pneumonia in Wuhan City, China at the end of December 2019. By January 21, 2020, cases of the illness were identified in Thailand, Japan, Korea, and the United States. The illness had a name; Coronavirus or COVID-19. By February, more cases in the US had been identified with two person-to-person transmission cases noted. The seriousness of the situation started to sink in when on March 11, 2020 the World Health Organization (WHO) declared COVID-19 a global pandemic. What follows is a month-by-month accounting of pandemic activities by Your Local Health Department.
- o **March 2020:** Governor Whitmer issued an Executive Order to shelter in-place. Schools were closed. Forty-three deaths in Michigan caused by COVID-19 had been identified and hospitals in SE Michigan were near capacity. Testing supplies were in short supply. Your Local Health Department moved to being open 7 days per week.
- o **April 2020:** Some Agency staff were laid-off due to the closure of businesses and the shelter-in place order. The Agency focused public information efforts on mitigation and contact tracing.
- o **May 2020:** The Washington Post published an article noting the large number of deaths in Hillsdale County. Routine immunizations were restarted in our clinics. Laid-off staff were back to work, and offices were open 7 days per week.
- o **June 2020:** COVID cases were increasing. Free drive-thru testing events were held in the tri-county area. A partnership with Covered Bridge Healthcare provided additional testing to residents in Coldwater, MI.
- o **July 2020:** Cases continue to be high stretching local health department staff. Temporary workers brought on to address capacity. With slow testing results, the Agency focused messaging on the importance of mitigation strategies. Schools begin sharing their Restart Plans.
- o **August 2020:** The Agency focused on flu vaccination. COVID fatigue noted as a real threat to disease transmission prevention. Pop-Up testing clinics continued in the tri-county area.
- o **September 2020:** Pharmacies began coming on-line to offer more testing options. Drive-thru flu vaccinations offered. New cases identified with schools reopening.

FY 2020 was a transformational year, but the team at Your Local Health Department continued to work hard to support you and your family.

Yours in Good Health,

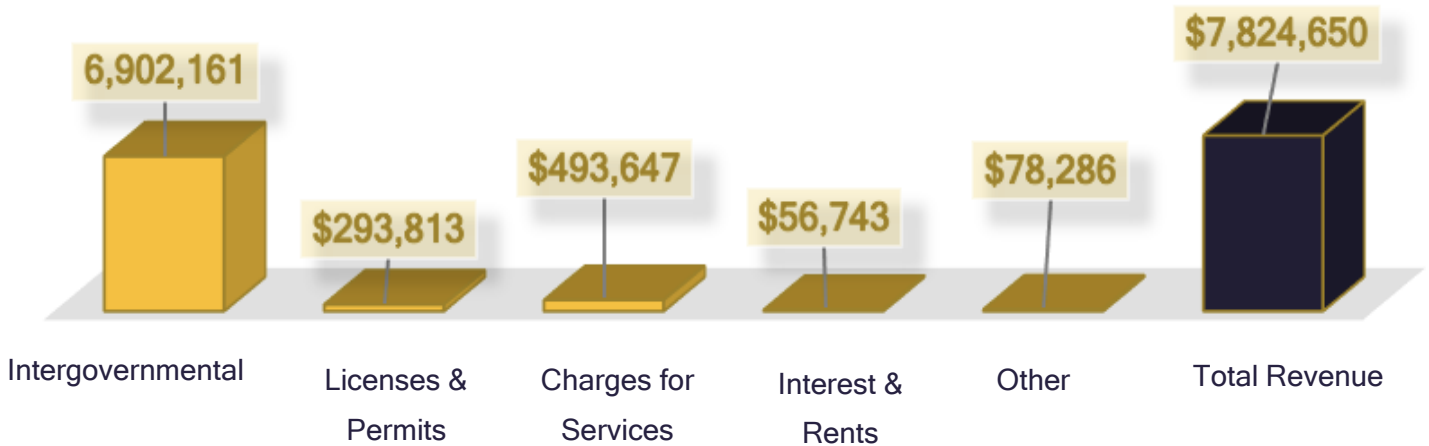
Rebecca A. Burns, MPH, RS, Health Officer

FINANCIAL STATEMENTS

2020 EXPENDITURE



2020 REVENUE



PUBLIC HEALTH DENTAL SERVICES



Age	Coldwater	Hillsdale	Three Rivers	Sturgis	Total
0-4	1.7%	2.3%	4.5%	4.5%	3.3%
5-14	8.3%	11.2%	17.7%	17.2%	13.7%
15-20	5.3%	5.1%	10%	6.8%	6.8%
21-60	66.7%	64.9%	54.6%	56.8%	60.6%
60+	18.1%	16.4%	13.1%	14.7%	15.5%

	Coldwater	Hillsdale	Three Rivers	Sturgis	Total
Number of Patient Visits	4,855	4,647	4,941	5,522	19,965
<u>Service Mix:</u>					
Medicaid	27.9%	40.2%	23.9%	18.6%	26.9%
Healthy Michigan Plan	26.8%	23.1%	22.8%	20.5%	23.5%
Traditional Insurance	26.4%	16.3%	20%	28.8%	23.1%
Delta Healthy Kids	9.8%	13.7%	22.3%	18.7%	16.3%
MyDP/NDP	9.2%	6.7%	10.9%	13.4%	10.2%

“

“The dentist was very gentle and attentive to my concerns. His assistant was wonderful too. Best experience at a dental office I’ve ever had! I recommend them to everyone!”

– Bobbi, My Community Dental Center, Coldwater

“Everyone here is amazing! They work well with my daughter and always make it a fun experience. This is by far one of the best dental places I’ve been to. My whole family comes here!”

– Destiny, My Community Dental Center, Hillsdale

“Excellent experience every time I have been there. Everyone from the front staff, assistants, hygienists and the dentist are friendly, patient, and very professional. This place is the best, I would highly recommend going there!”

– Jacqueline, My Community Dental Center, Three Rivers

COUNTY HEALTH PROFILE

Profile 2020 County	Branch	Hillsdale	St. Joseph	Michigan
<i>Population</i>	43,517	45,605	61,964	9,986,857
<i>Marriage</i>	258	315	414	56,374
<i>Divorce</i>	165	187	225	28,186
<i>% of Population >65</i>	18.7%	20.2%	18.5%	17.7%
Leading causes of Death				
<i>Heart Disease</i>	23.2%	24.5%	25.1%	25.6%
<i>Cancer</i>	22.4%	24.1%	18.1%	21.2%
<i>Chronic Lower Respiratory Disease</i>	9.1%	9.1%	6.4%	5.8%
<i>Unintentional Injuries</i>	7.3%	5.3%	6.8%	5.6%
<i>Stroke</i>	5.2%	4.9%	5.8%	5.2%
<i>Alzheimer's Disease</i>	3.3%	5.3%	3.1%	4.5%
<i>Diabetes Mellitus</i>	1.9%	2.5%	3.4%	2.9%
<i>Kidney Disease</i>	1.7%	1.4%	2.8%	2.0%
<i>Pneumonia & Influenza</i>	2.9%	1.6%	1.8%	1.9%
<i>Intentional Self-Harm - Suicide</i>	1.0%	1.8%	2.8%	1.6%
Maternal/Infant Health Indicators				
<i>Number of Live Births</i>	545	473	722	107,917
<i>Number of Teen Births (age 15-19)</i>	34	20	45	4,758
<i>Teen Pregnancy Rate (per 1,000 births)</i>	31.0	26.0	36.0	20.0
<i>% Low Birth Weight</i>	7%	6%	8%	8%
<i>% Very Low Birth Weight</i>	1.3%	**	0.9%	1.4%
<i>% Adequate Prenatal Care- Kessner Index (2020)</i>	49.7%	51.8%	43.9%	68%
<i>Infant Mortality Rate (per 1,000)(Average -2014-18)</i>	8.0	6.0	6.0	7.0
Economic Indicators (2020 County Health Rankings)				
<i>% Unemployment</i>	3.7%	4.0%	3.7%	4.1%
<i>Median Household Income</i>	\$50,500	\$50,400	\$52,700	\$56,600
<i>% Children Eligible for Free & Reduced Lunch (185% of Poverty)</i>	58.0%	58.0%	58.0%	50.0%

PERSONAL HEALTH & DISEASE PREVENTION

What is WIC?

The Special Supplemental Nutrition Program for Women, Infants and Children (WIC) is a public health nutrition program under the USDA that provides the following for income-eligible women who are pregnant or post-partum, infants and children up to age five:

- Nutrition education
- Nutritious foods
- Breastfeeding support
- Healthcare referrals

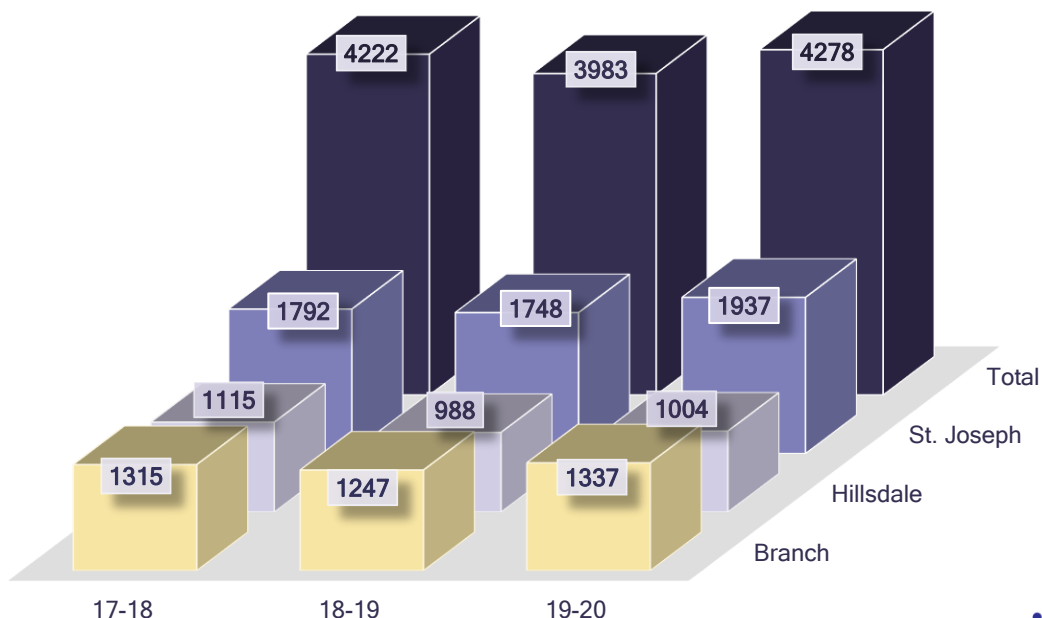
WIC can help a family by:

- Reducing premature births
- Reducing low birth-weight babies
- Reducing fetal and infant deaths
- Improving diet quality
- Increasing access to regular healthcare
- Increasing immunization rates
- Increasing access to prenatal care
- Increasing pregnant women's consumptions of vital nutrients

Michigan WIC Program: Top Referral Categories

<i>Branch</i>	Immunizations	Food Stamps	Dental	Medicaid/Healthy Kids
<i>Hillsdale</i>	Immunizations	Dental	Safe Sleep Education	Medicaid/Healthy Kids
<i>St. Joseph</i>	Immunizations	Medicaid/Healthy Kids	Emergency Food Pantry	Safe Sleep Education

WIC: Average Participation by Year



CHILDREN'S SPECIAL HEALTH CARE SERVICES

Children's Special Health Care Services (CSHCS) provides services to children with special needs and their families. You are eligible for CSHCS if you are a Michigan resident between the ages of 0-21 years, have a qualifying medical condition and seeing a specialist. CSHCS covers up to 3,000 various conditions and is available to families at all income levels.

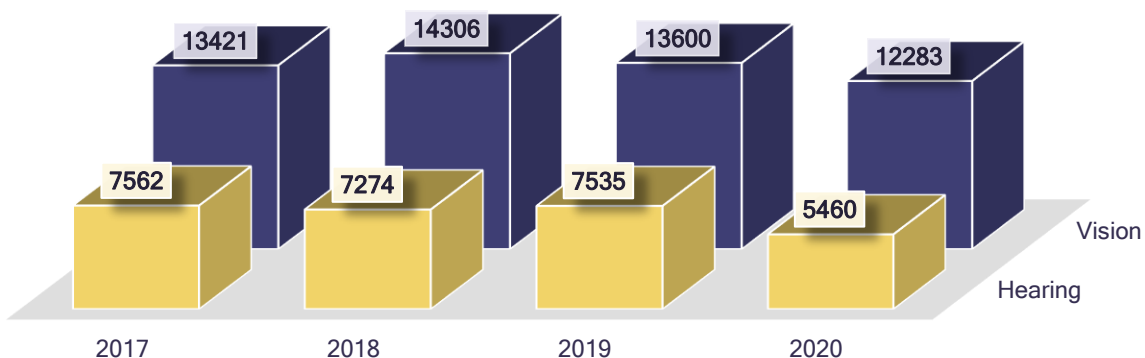
The Michigan Department of Health and Human Services (MDHHS) provides FREE hearing and vision screenings to all children in Michigan. Screenings are conducted in schools or at BHSJ Community Health Agency.

- An undiagnosed hearing and/or vision problem may interfere with development.
- Early detection and treatment of hearing and vision problems can help children succeed in school.
- Screenings are conducted by fully trained hearing and vision technicians.
- 10% of children screened for vision and 5% screened for hearing are referred to specialists.

Individuals Enrolled in CSHCS



BHSJ HEARING & VISION SCREENING



COMMUNICABLE DISEASE

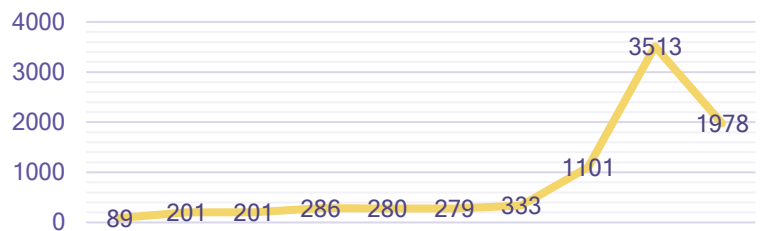
“Communicable Disease is caused by micro-organisms such as bacteria, viruses, parasites, and fungi that can be spread directly or indirectly from one person to another. Transmission can occur through insect bites, human to human contact and indigestion of contaminated food or water.”

- World Health Organization

Prevent the spread of disease by doing the following:

- Properly wash your hands often
- Handle and prepare food safely
- Keep up on your vaccinations
- Avoid sharing personal items
- Stay home when you feel sick
- Clean and disinfect commonly used surfaces
- Avoid touching wild animals

2020: Confirmed COVID-19 Case Data
(March-December)

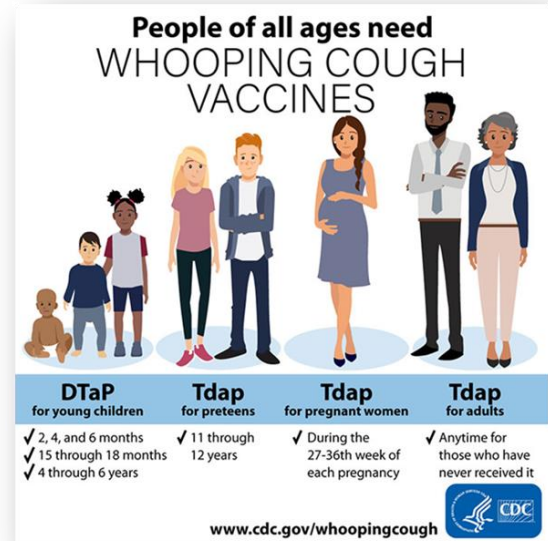


Disease	2016	2017	2018	2019	2020	Total
HIV/AIDS	0	3	1	2	0	6
Novel COVID-19	0	0	0	0	8,261	8,261
Campylobacter	40	33	39	42	19	173
Cryptosporidiosis	8	8	7	13	4	41
Giardiasis	7	6	7	8	6	34
Norovirus	0	30	1	18	1	50
Salmonellosis	28	27	29	27	21	132
Shiga-toxin-producing Escherichia coli	0	0	0	5	3	8
Shigellosis	0	2	0	2	1	5
Yersinia enterocolitica	0	0	2	2	2	6
Meningitis - Aseptic	4	1	5	4	0	14
Meningitis- Bacterial Other	2	1	1	1	0	5
Meningococcal Disease	0	0	0	2	0	2
Coccidioidomycosis	2	1	1	1	0	5
Histoplasmosis	3	2	1	6	2	14
Legionellosis	2	2	0	4	3	11
Rabies Animal	0	0	0	115	86	201
Chlamydia (Genital)	399	421	467	404	388	2,082
Gonorrhea	45	54	119	162	215	597
Syphilis	7	9	0	0	0	16
Tuberculosis	0	0	0	0	0	0
Chickenpox (Varicella)	14	0	4	4	0	22
H. Influenza Disease- Inv.	2	2	3	1	3	11
Measles	0	0	0	0	0	0
Mumps	0	0	0	0	0	0
Pertussis	2	7	7	14	0	30
Lyme Disease	3	0	0	2	1	6
Hepatitis A	2	3	2	1	1	9
Hepatitis B, Acute	0	1	0	3	0	4
Hepatitis B, Chronic	7	4	1	1	1	15
Hepatitis C, Acute	0	0	0	0	0	0
Hepatitis C, Chronic	78	78	61	42	29	295

IMMUNIZATIONS

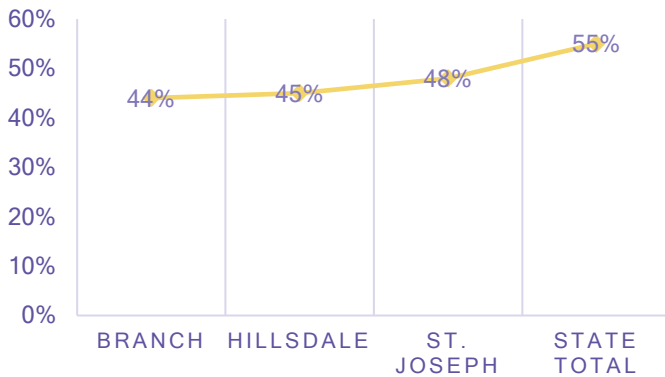
BHSJ's Top Administered Vaccines (2020)

1. Tetanus, diphtheria, acellular pertussis (Tdap)
2. Pneumococcal (Prevnar 13)
3. Hepatitis A (Pediatric)
4. Measles, Mumps & Rubella (MMR)
5. Meningococcal



<i>BHSJ Vaccines Administered</i>	2017/18	2018/19	2019/20
<i>Influenza Only</i>	1,498	2,046	1,664
<i>Total Vaccines</i>	9,547	10,067	6,561

CHILDREN 19-36 MONTHS VACCINATED



What you should know about vaccines:

- We need vaccines to help protect against serious disease.
- Outbreaks of vaccine preventable disease can and still happen in our communities.
- The CDC and FDA take many steps to make sure our vaccines are safe.
- Vaccines protect our children from getting sick.
- Vaccines are for everyone.

HEALTH EDUCATION AND PROMOTION

The Health Education and Promotion staff was unable to attend many community events in all three counties in FY 2020 due to COVID-19 closures to provide area residents information on agency services including WIC, Immunizations, Infant Safe Sleep, Environmental Health Services, Breastfeeding, Child Passenger Safety and Tobacco Cessation.

Marijuana Lock Boxes

We purchased lock boxes for distribution and educational information at outreach events, promoted through radio commercials and printed material that promoted the lock box distribution and the safety aspect of the campaign. We exceeded our social media goal reaching over 2,700 people.

To promote the importance of “Lock It Up,” we:

- Utilized over 10 community partners for distribution across the three-county area
- Attended community events
- Placed billboards in each county
- Posted on social media

Media Platforms

Our team exceeded our goal of nine social media posts, finishing with twelve total posts. Seven of those posts reached 2,728 people. This platform was vital for distributing information during the pandemic, due to the cancellation of most outreach events during COVID-19.

According to the Michigan Profile for Healthy Youth (MiPHY) survey, more than 51% of students in the tri-county area have easy access to marijuana. Because of that, staff from the Health Education and Promotion Team applied for and received a

grant from LARA to educate the community on the importance of locking up medicinal marijuana. We ordered and distributed 1,080 lock boxes. The boxes were free and were handed out to any tri-county resident that was in need.

Our Health Educators work with youth from our area schools to promote healthy lifestyles, including healthy relationships, drug and alcohol prevention, tobacco cessation, safe driving habits and anti-bullying.

Our new Health and Promotion Supervisor

Alex Bergmooser joined the Branch-Hillsdale-St. Joseph Community Health Agency as a Health Education and Promotion Supervisor in September 2020.



He became a Health Education Professional was to help facilitate societal change of what it really means to be healthy. He likes to keep people aware of an overall outlook of health at an earlier age so that they do not bury themselves in practices that are not conducive of overall health as they get older. It is his goal to not only be a health educator, but also a health advocate.

EMERGENCY PREPAREDNESS

Emergency preparedness encompasses the planning and response to disasters. A disaster is defined by the World Health Organization (WHO) as a sudden phenomenon of sufficient magnitude to overwhelm the resources of a hospital, region or location requiring external support. The Emergency Preparedness team at BHSJ works hard every year to be ready in any event. Emergency Preparedness is an essential service area of Public Health responsibility. Public Health threats are always present whether caused by natural, accidental or intentional means. Since February of 2020, all meetings have been virtual with the exception of site visits to arrange testing clinics. The Homeland Security Conference was cancelled as was all training through the Center for Domestic Preparedness.

2020 Highlights

- *Community COVID-19 Testing* - COVID testing with MING began on 6/6 in Sturgis at the Doyle Community Center and continued through October. Setting up 24 clinics utilizing both the MING and HONU (through MDHHS). We averaged about 150-200 vehicles per clinic with the largest number in the Sturgis area. Clinics were held despite the temperatures and inclement weather present. We were mainly staffed by HD staff and volunteers (some as young as 14). Testing was also conducted with Covered Bridge Health Care in our HD lot here in Coldwater.
- *Project Public Health Ready* - (PPHR) was again taken up for recertification. This necessitates a review of the Emergency Operations Plan; Risk Communications Plan and the Strategic National Stockpile Distribution Plan. The initial submission was put forth and awaiting review. The process was shut down however, due to the need to dedicate time to the COVID response.
- *Isolation and Quarantine* - Plans were reviewed and strengthened with community support as it became necessary to consider the housing of homeless and others during a pandemic response. Each community responded in a different manner but all were very successful.



Drive-Thru Rapid COVID-19 Testing Clinic in Sturgis, MI

Top Hazards for Branch, Hillsdale and St. Joseph Counties

- Environmental:
 - Floods
 - Tornadoes/severe storms
 - Winter weather
- Chemical:
 - Releases of chlorine, ammonia and other hazardous chemicals from manufacturing/agricultural businesses.



Law Enforcement Officers and National Guard participate in Regional Distribution Node

ENVIRONMENTAL HEALTH

Interactions with the environment affect quality of life, years of healthy life lived and health disparities. The World Health Organization (WHO) defines environment, as it relates to health as “all the physical, chemical and biological factors external to a person and their related behaviors. “Environmental health consists of preventing and controlling disease, injury and disability related to the interactions between people and their environment.

Food Protection

This program provides a systematic approach to minimize the risk of food-borne illness and to ensure that food meets consumer’s expectations through application of statewide standards for all establishments where food is prepared and/or served to the public.

	2019	2020
Establishment Inspections	869	808
Plans Reviewed	21	20
Temporary Food Establishment Inspections	213	79
Food Manager Certification Classes (# of attendees)	187	-
Total	1,290	907

On-site Sewage

Reviews sites proposed for sewage disposal, issuance, and/or denial of permits, sewage evaluation, inspection, investigation and enforcement.

	2019	2020
Well /Septic Evaluations	24	13
Construction Permits	456	481
Septic Systems Inspected	361	388
Vacant Land Evaluations	32	63
Change of Use Evaluations	407	363
Total	1,280	1,308



Back (L to R): James Young, Dave Wagoner, Cody Johnson, Carrie Southern, Ben Aalberts, Lee Zimmerman, Paul Andriacchi

Front (L to R): Joe Frazier, Brandi Lennox, Elizabeth Howard, Stephanie Hough, Annalisa Rice, Stephanie Wolgast, Barb Keith, Bethany Pirman

Private and Public Water Supply

These programs are designed to assure both the proper installation of residential water wells and the monitoring and regulating of Type II Public Water Supplies to assure safe usable groundwater.

	2019	2020
Well Construction Permits Issued	510	583
Well Permits Inspected	410	412
New Water Supplies Approved	496	496
Non-Community Water Supply Inspections	87	73
Total	1,503	1,564

Other Programs

Although the well, septic and food programs require the biggest portion of the environmental health staff focus, we do have responsibilities in other programs.

	2019	2020
Medical Waste Inspections	32	29
Swimming Pool Inspections	54	52
Campground Inspections	65	65
Body Art Facility Inspections	8	8
DHHS Inspections (daycare, foster care, etc.)	98	55
Septic Hauler Inspections	38	38
Total	295	247

AREA AGENCY ON AGING (IIC)

Our mission is to provide a full range of high-quality services, programs and opportunities which promote the independence and dignity of older adults while supporting those who care for them throughout the Branch and St. Joseph Counties.

Please contact the Branch-St. Joseph Area Agency on Aging for specific information and assistance at (517) 278-2538 or toll free (888) 615-8009.

- We place the people we serve at the center of our operations, honoring their preferences and privacy.
- We assure efficient use of public and private resources.
- We develop programs and services using an inclusive process to promote healthy aging and livable communities for all ages.
- We exhibit strong leadership which responds to changing needs and fosters collaboration and cooperation through the communities we serve.
- We use effective communication to carry out our mission and vision in an open, respectful and unbiased manner.



Laura Sutter, *Director*

Over the past year, the Agency on Aging IIC team rose to unprecedented challenges developed new programs, planned for and implemented new supports and services to respond to unique needs across our two-county planning and service area. As we look back upon the data and highlights throughout the Annual Report, this quote truly encompasses how we reflect upon our efforts over the past year, amid the Coronavirus pandemic.

Elder Abuse Prevention and Awareness: The “Services to Victims of Elder Abuse” (SVEA) project completed its second year of grant activities. Victim Specialists served 78 individuals with a wide range of direct services including personal advocacy, crisis intervention, emergency financial assistance, relocation assistance, criminal justice advocacy and personal protective orders. Victim Specialists provided multiple trainings with community organizations to raise awareness of the program. They also began planning larger, specialized training events which were later forced to be canceled due to the pandemic. The multi-disciplinary team/coalition groups in both Branch and St. Joseph County remained committed to meet throughout the year and communicated regularly. Training events for law enforcement as well as development of a volunteer component to the program remain a top priority looking ahead. If you would like to know more details or to become involved in your community’s efforts to prevent vulnerable adult abuse, neglect or exploitation, please call our office.



(L to R): **Laura Sutter**, Director; **Kari Doty**, Program Specialist; **Meggie Segura**, RN Care Consultant; **Danielle Newhouse**, Victim Specialist; **Katelyn Hamlin**, LLMSW Care Consultant; **Josh Englehart**, Victim Specialist

Community Living Program continues to soar! - 2020 was a unique year for Care Consultants who quickly transitioned their in-person assessment and monitoring to a telephonic process, using technology and feedback from direct care staff to support participants' independence at home. Despite the pandemic, we served nearly 100 individuals. Via telephone, we continued a person-centered approach, served those greatest in-need and supported participants to age in place. If you would like more information about the Community Living Program or other services available in your community, please contact our office.

Direct Care Worker Premium Pay - AAA IIIC providers and vendors were allocated COVID relief funds to support a \$2.00 per hour premium pay for their direct care workers who provided hours of personal care, homemaking respite care and/or adult day services during the pandemic. Over 6,700 hours were reimbursed from July to September 2020.

Services	Totals	Units
Operations	\$113,007	N/A
Nutrition	\$860,784	178,174
In-Home	\$343,894	21,129
Community	\$85,001	3,501
Access	\$407,964	23,934
Legal	\$12,467	223

*In general, services are targeted to those who are 60 years of age or older unless otherwise allowed under eligibility criteria for a specific program.

**Data based on self-reported numbers by participants, choosing to identify race/ethnicity is not required.

Senior Project FRESH - Over 400 coupon books were distributed creatively throughout the spring and summer of 2020! Senior Project Fresh provides free nutrition counseling and \$20 in coupons to be used at local participating farm markets for fresh fruits and vegetables. Residents who are 60 years and older and who meet certain household incomes are eligible to apply for the program through our office or through our community partners. Please contact us for more information!

Personal Protective Equipment - AAA IIIC received multiple shipments of PPE from the Aging and Adult Services Agency to use and distribute to community partners including items such as: masks, face shields, hand sanitizer, gloves, gowns, shoe covers and sanitizing wipes.

COVID Care Packages - A new project developed in response to callers' and participants' expressed needs of being lonely and scared about COVID. These packages offered an opportunity to stay active and creative, understand COVID and stay safe at home. This project was replicated statewide after the Aging and Adult Services Agency recognized it as a best practice.

Population Served**	
Total Population 18+*	19,671
White (non-Hispanic)	13,179
African American	198
Asian/Pacific Islander	17
American Indian/Alaskan	14
Hispanic (of any race)	62
Below Poverty	3,021
Rural	19,671